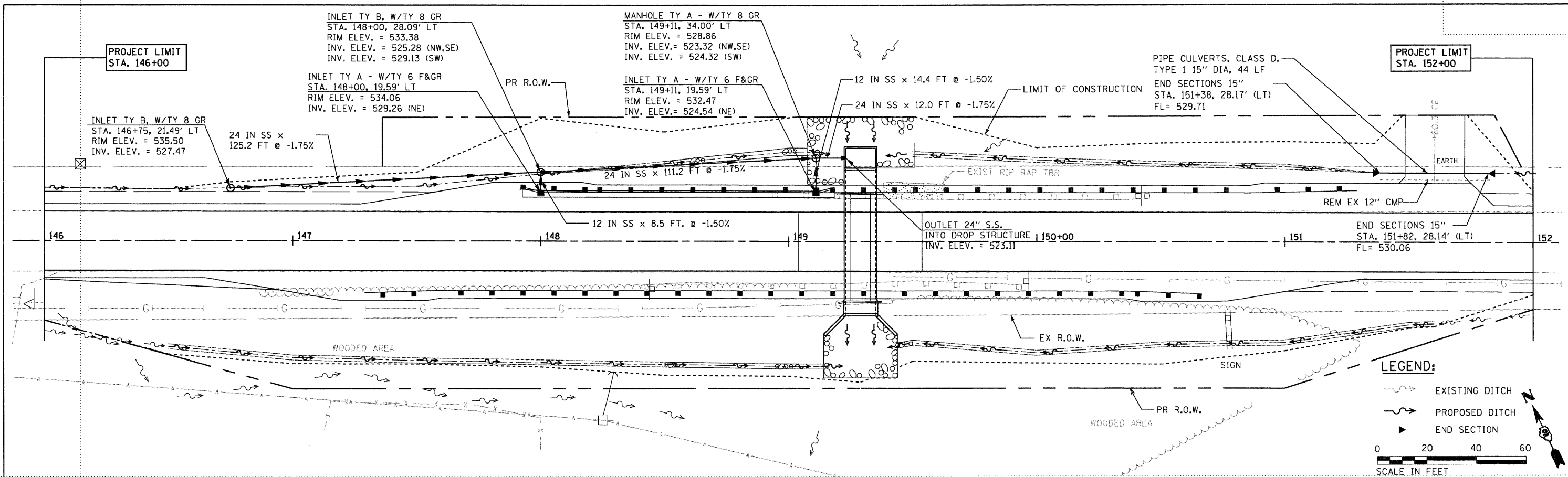


DATE: \_\_\_\_\_ BY: \_\_\_\_\_  
 SURVEYED \_\_\_\_\_  
 PLAN ALIGNED \_\_\_\_\_  
 CHECKED \_\_\_\_\_  
 NO. OF WAY CHECKED \_\_\_\_\_  
 NO. \_\_\_\_\_  
 CROSS FILE NAME \_\_\_\_\_

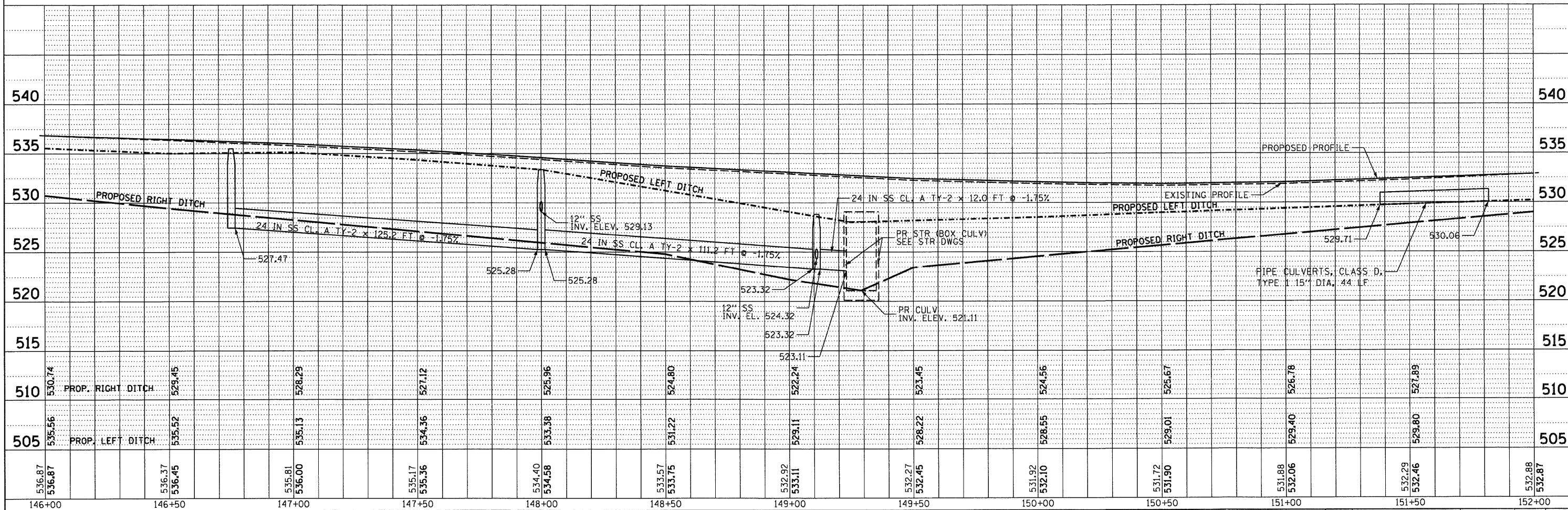
DATE: \_\_\_\_\_ BY: \_\_\_\_\_  
 SURVEYED \_\_\_\_\_  
 PROFILE GRADES CHECKED \_\_\_\_\_  
 NO. \_\_\_\_\_  
 STRUCTURE NOTATIONS CHECKED \_\_\_\_\_



**LEGEND:**

- EXISTING DITCH
- PROPOSED DITCH
- END SECTION

0 20 40 60  
 SCALE IN FEET



FILE NAME =	USER NAME = *USER*	DESIGNED DB/CW	REVISED -	<b>STATE OF ILLINOIS DEPARTMENT OF TRANSPORTATION</b>	<b>DRAINAGE PLAN AND PROFILE SN 050-2643</b>	F.A.P. RTE. 623	SECTION (H)-1	COUNTY LASALLE	TOTAL SHEETS 25	SHEET NO. 12	
*FILE#*	DRAWN DB/NS	CHECKED AS	REVISED -			CONTRACT NO. 66914					
PLOT SCALE = *SCALE*	DATE DECEMBER 09, 2009	REVISOR	REVISED -			SCALE: 1" = 20' SHEET NO. 12 OF 25 SHEETS STA. 146+00 TO STA. 152+00					
PLOT DATE = *DATE*	DATE	REVISOR	REVISED -			FED. ROAD DIST. NO. [ILLINOIS] FED. AID PROJECT					