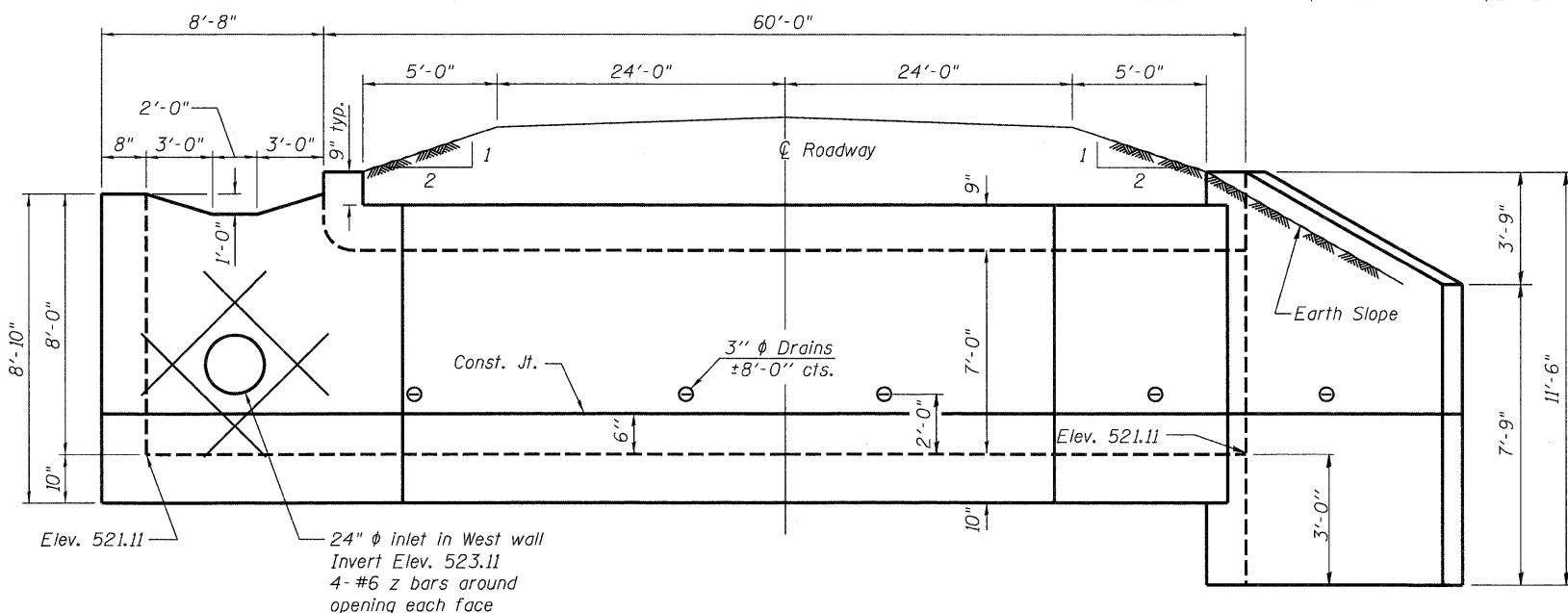
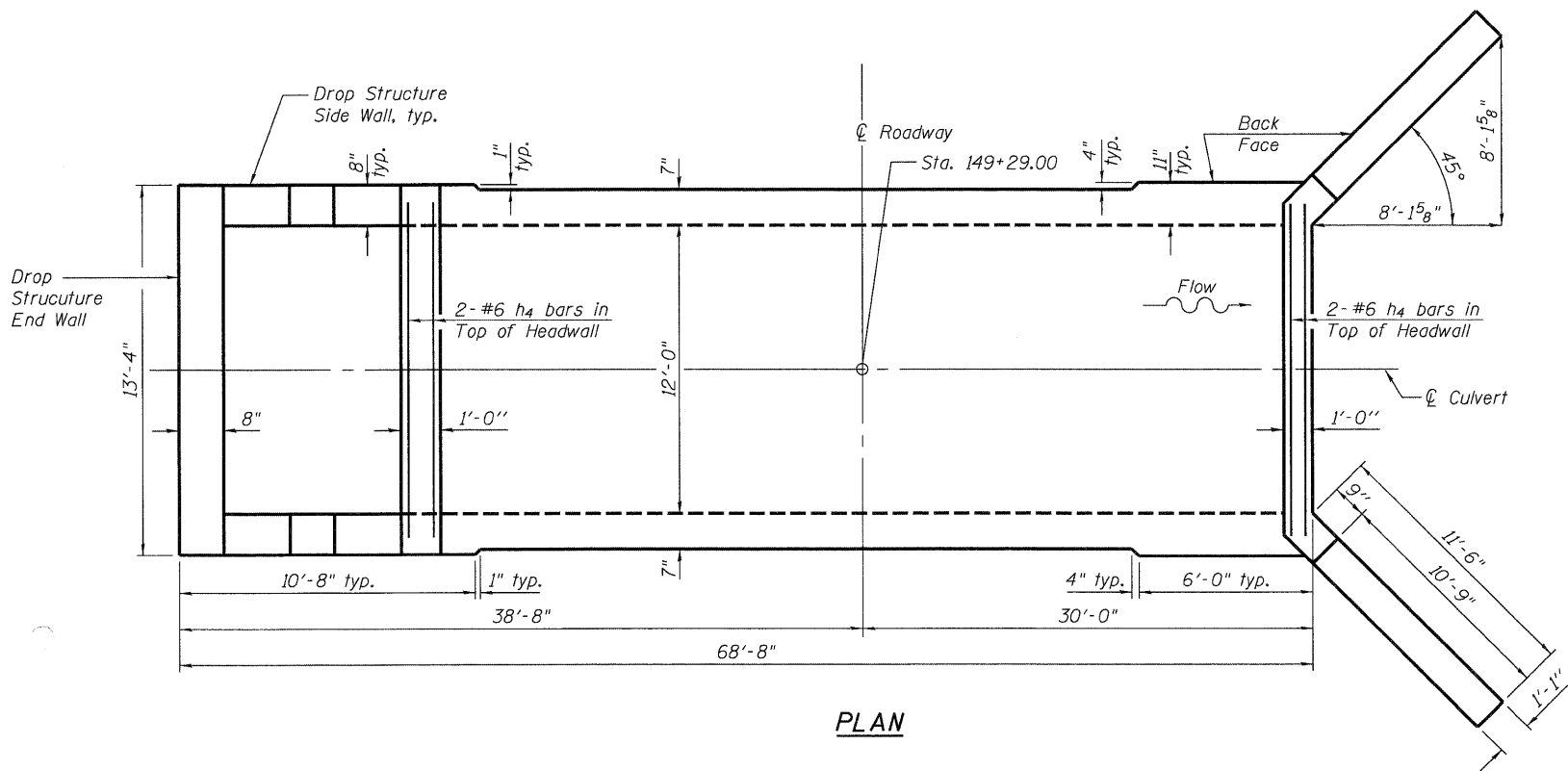


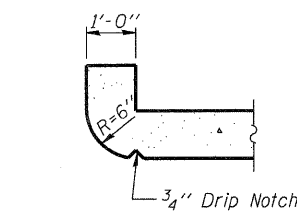
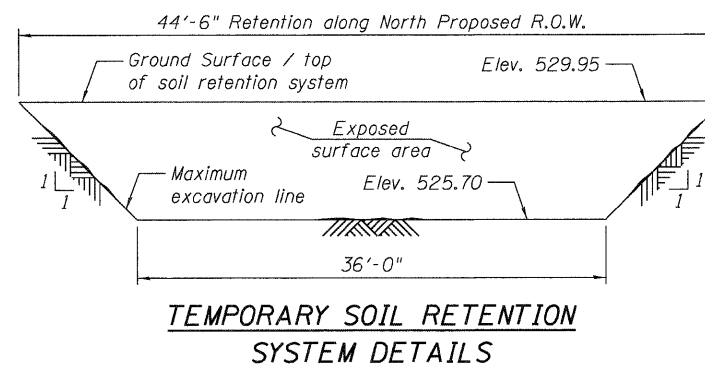
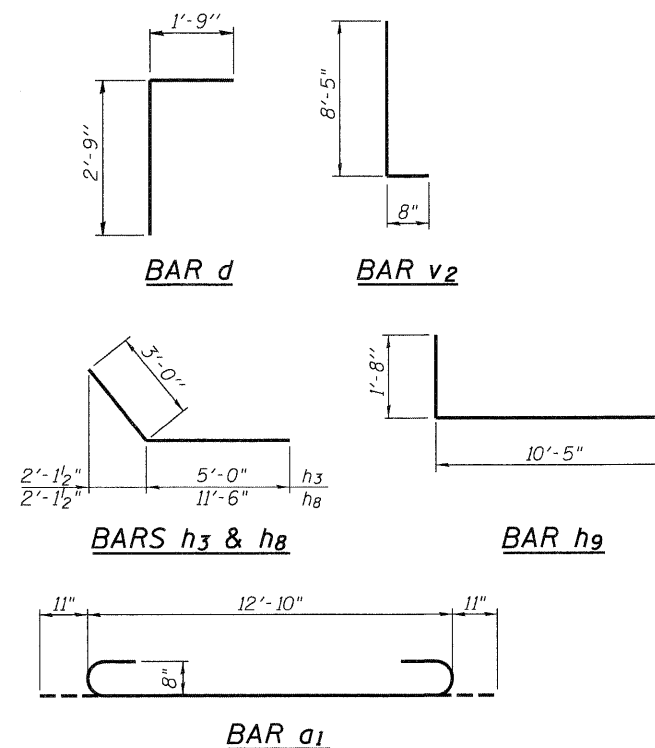
STATE OF ILLINOIS  
DEPARTMENT OF TRANSPORTATION



ELEVATION



PLAN



SECTION THRU HEADWALL  
(Up Stream End Only)

GENERAL NOTES

1. Reinforcement bars shall conform to the requirements of ASTM A 706, Grade 60. See Special Provisions.
2. Layout of slope protection system may be varied in the field to suit ground conditions as directed by the Engineer.
3. The material used to replace the unsuitable material removed below the bottom of the proposed cast-in-place reinforced concrete box culvert and wingwalls shall be paid for as "Rock Fill".
4. Precast concrete culvert alternate will not be allowed.
5. A distance of half the wingwall length, but not less than six feet, of the barrel shall be poured monolithically with the wingwalls.
6. All construction joints shall be bonded.

BILL OF MATERIAL

Bar	No.	Size	Length	Shape
a1	238	#8	14'-8"	U
a2	36	#4	12'-3"	—
d	13	#4	4'-6"	L
h	30	#6	30'-11"	—
h1	66	#5	23'-11"	—
h2	28	#6	35'-3"	—
h3	24	#7	8'-0"	L
h4	4	#6	13'-0"	—
h8	20	#7	14'-6"	L
h9	16	#4	12'-1"	L
h10	2	#6	10'-5"	—
h11	8	#4	13'-1"	—
h12	8	#6	13'-1"	—
v	193	#4	8'-3"	—
v1	8	#4	11'-1"	—
v2	43	#4	9'-1"	—
z	8	#6	5'-6"	—
Concrete Box Culverts		Cu. Yd.	87.1	
Reinforcement Bars		Pound	17,420	

Bars indicated thus 7 x 2-#6 etc. indicates 7 lines of bars with 2 lengths per line.

STRUCTURE DIMENSIONS, DETAILS AND GENERAL NOTES  
US ROUTE 6 OVER UNNAMED  
TRIBUTARY TO THE ILLINOIS RIVER  
STRUCTURE NO. 050-2643

DESIGNED	LM
CHECKED	GBC / SMK
DRAWN	LM
CHECKED	GBC / SMK

SHEET NO. 2 OF 4 SHEETS	F.A.P. RTE.	SECTION	COUNTY	TOTAL SHEETS	SHEET NO.
	623	(HI)-1	LASALLE	25	15
			CONTRACT NO. 66914		
FED. ROAD DIST. NO. 1 ILLINOIS FED. AID PROJECT					

Delta Engineering, Inc.  
CONSULTING ENGINEERS, CONSTRUCTION MANAGERS, SURVEYORS  
111 W. Jackson Blvd., Suite 510 Chicago, IL 60604-2001