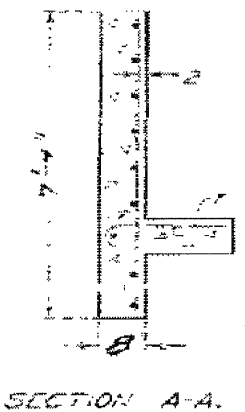
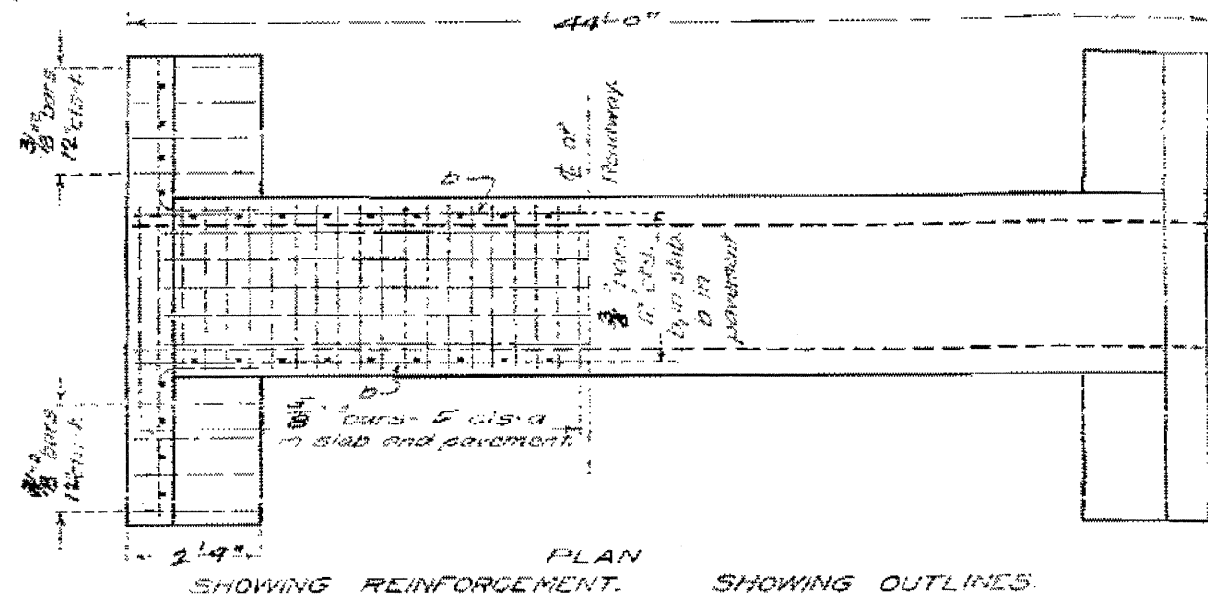
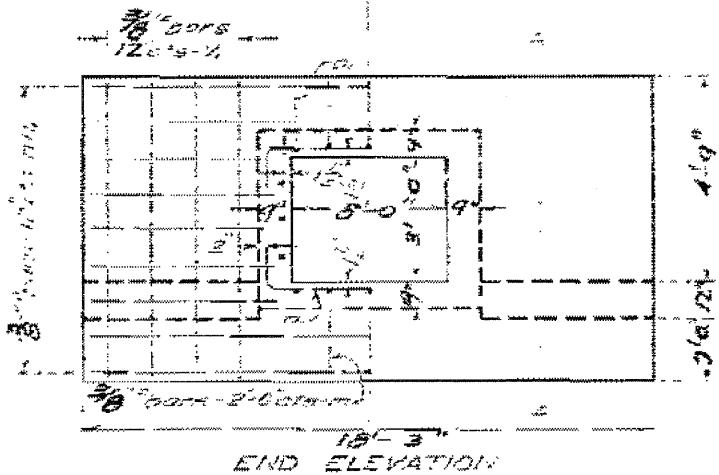
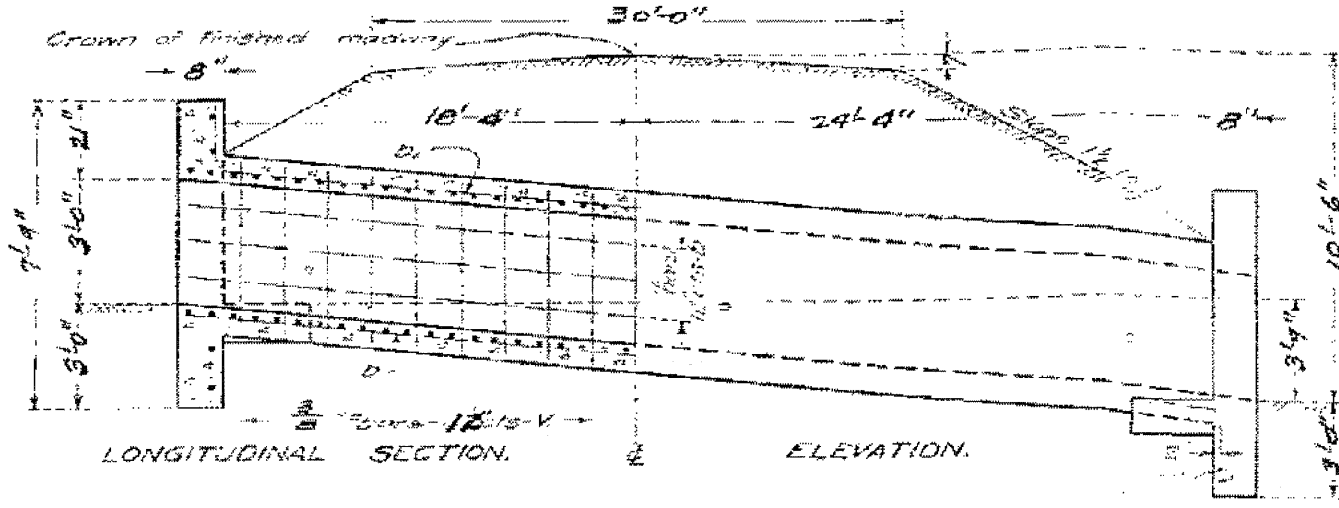


STATE OF ILLINOIS
STATE HIGHWAY DEPARTMENT
REINFORCED CONCRETE BOX CULVERT

FED. ROAD DIST. NO.	STATE	FED. AID PROJ. NO.	FISCAL YEAR	SHEET NO.	TOTAL SHEETS
7	ILL.	7	1919	30	39



BILL OF MATERIAL

Bar No.	Length	Quantity	Weight
1	4'-5"	56	15.2
2	7'-3"	20	11.2
3	11'-4"	8	23.2
4	6'-6"	20	11.2
5	10'-6"	210	60.0
6	22'-9"	30	87.0
7	24'-0"	18	52.8
8	3'-3"	20	11.2
9	5'-0"	12	35.0
STEEL - LBS.		386.8	
Concrete - cu. yds.		36.7	

Class A concrete to be used throughout. Proportions 1:2 1/2:4 Use in piers in downstream headwell only.

Sta 378+72
Federal Aid.
Project No 7, Sec. 14
Morris Henry Road
LaSalle County.

DESIGNED BY: *[Signature]*
CHECKED BY: *[Signature]*
DRAWN BY: *[Signature]*
DATE: DECEMBER 09, 2009

APPROVED BY: *[Signature]*
ENGINEER OF DESIGN

PLAN	DATE	BY

PROFILE	DATE	BY

**EXISTING PLANS
FOR INFORMATION ONLY**
STR. 050-2595

FILE NAME	USER NAME	DESIGNED	REVISIONS	STATE OF ILLINOIS DEPARTMENT OF TRANSPORTATION	EXISTING PLAN - STRUCTURE	F.A.P. RTE.	SECTION	COUNTY	TOTAL SHEETS	SHEET NO.
#FILE#	#USER#	DB/NS	REVISED -			623	(HI)-1	LASALLE	25	18
		CHECKED AS	REVISED -			CONTRACT NO. 66914				
		DATE	REVISED -			FED. ROAD DIST. NO. ILLINOIS FED. AID PROJECT				