

FOR INDEX OF SHEETS, SEE SHEET NO. 2

STATE OF ILLINOIS  
DEPARTMENT OF TRANSPORTATION  
DIVISION OF HIGHWAYS  
**PROPOSED HIGHWAY PLANS**

FAS ROUTE 2400 (US 150)  
SECTION 106RS-2; 107RS-4; 108RS-3

PAVEMENT PRESERVATION  
KNOX COUNTY  
C-94-060-05

F.A.S. RTE.	SECTION	COUNTY	TOTAL SHEETS	SHEET NO.
2400	106RS-2; 107RS-4; 108RS-3	KNOX	29	1
		ILLINOIS	CONTRACT NO. 68472	

D-94-054-05

**HIGHWAY STANDARDS**

406201-01 635006-03 701311-03  
442201-03 701201-03 701336-05  
482006-03 701301-03 701901-01  
631006-07 701306-02 781001-03

**DISTRICT CADD STANDARDS**

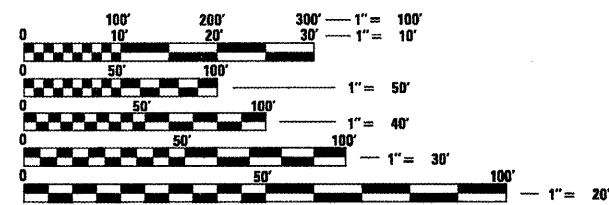
406101 635001  
440001 667101  
630101 780001

**PROJECT DESCRIPTION**

WORK ON THIS PROJECT CONSISTS OF PATCHING, MILLING AND RESURFACING ON US 150 FROM I-74 TO THE PEORIA COUNTY LINE; INCLUDING TRAFFIC BARRIER TERMINAL REPLACEMENTS AND OTHER COLLATERAL WORK.

**TRAFFIC INFORMATION**

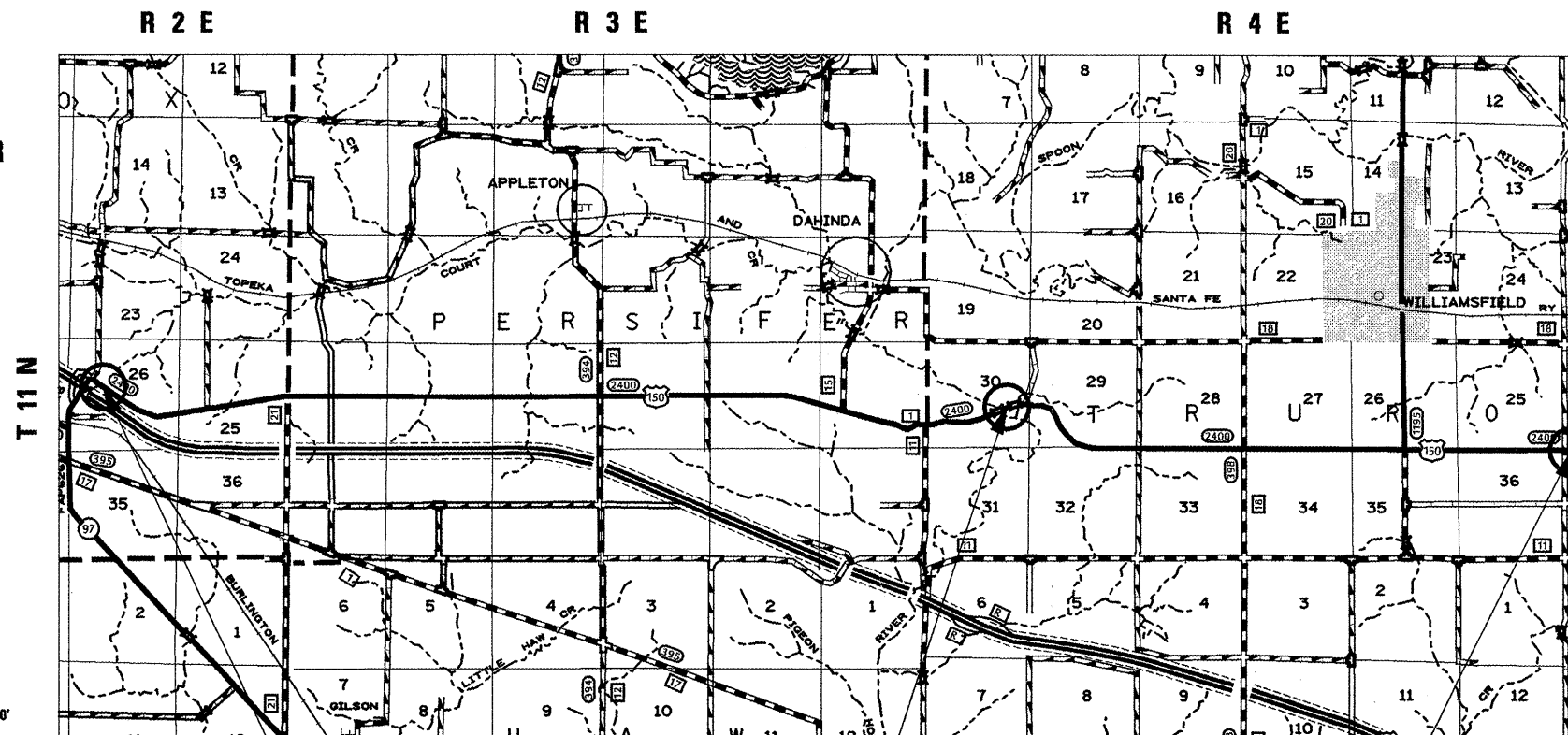
ADT = 1950 (2007)  
MU = 6.67%  
SU = 5.13%



FULL SIZE PLANS HAVE BEEN PREPARED USING STANDARD ENGINEERING SCALES. REDUCED SIZED PLANS WILL NOT CONFORM TO STANDARD SCALES. IN MAKING MEASUREMENTS ON REDUCED PLANS, THE ABOVE SCALES MAY BE USED.

J.U.L.I.E.  
JOINT UTILITY LOCATION INFORMATION FOR EXCAVATION  
1-800-892-0123  
OR 811

PROJECT ENGINEER: CHRISTOPHER MAUSHARD 309.671.3453  
PROJECT MANAGER: MIKE MOHAMED 309.671.3462  
CATALOG NO. 033054-00D  
CONTRACT NO. 68472

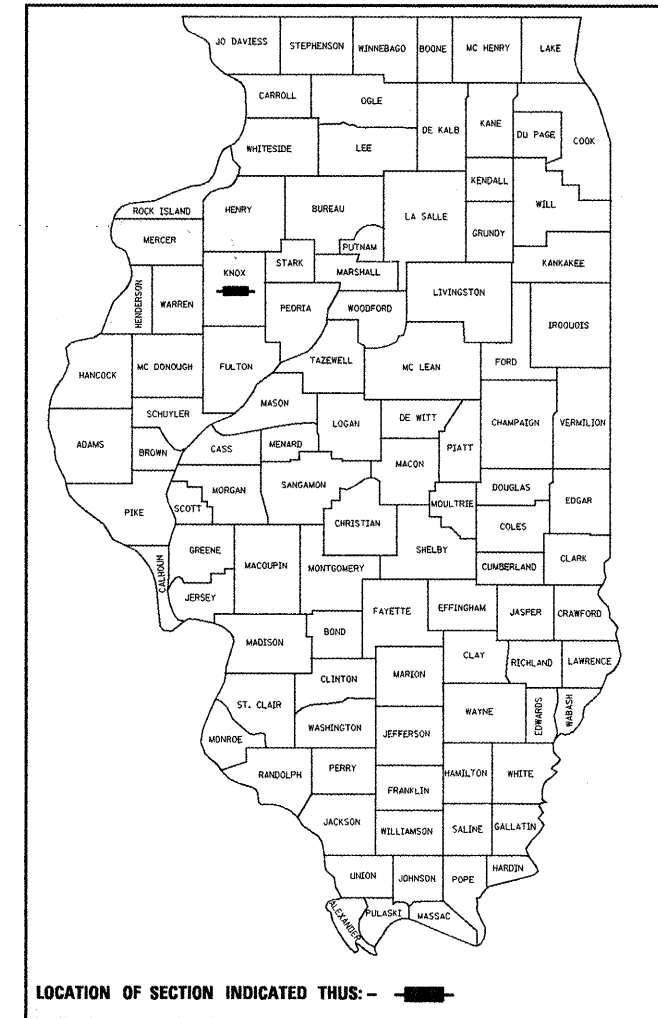


PROJECT BEGINS STA. 52+03.09

PROJECT ENDS STA. 755+19.00

OMISSION: SN 048-0031 & SN 048-0084  
SEE LINE DIAGRAM FOR STATIONS  
AND STATION EQUATIONS

GROSS LENGTH = 74,636.19 FT. = 14.136 MILES  
NET LENGTH = 73,887.21 FT. = 13.994 MILES



STATE OF ILLINOIS  
DEPARTMENT OF TRANSPORTATION  
DIVISION OF HIGHWAYS

SUBMITTED 12/16/2010  
*[Signature]*  
DEPUTY DIRECTOR OF HIGHWAYS, REGION ENGINEER

January 29, 2010  
*[Signature]*  
ENGINEER OF DESIGN AND ENVIRONMENT

January 29, 2010  
*[Signature]*  
DIRECTOR OF HIGHWAYS, CHIEF ENGINEER

PRINTED BY THE AUTHORITY  
OF THE STATE OF ILLINOIS

# INDEX OF SHEETS

1. COVER SHEET
2. GENERAL NOTES, COMMITMENTS & JOB SPECIFIC NOTES
5. SUMMARY OF QUANTITIES
7. TYPICAL SECTIONS
11. SCHEDULE OF QUANTITIES
14. LINE DIAGRAM
15. JOB DETAILS
22. CADD STANDARDS
30. HIGHWAY STANDARDS

## GENERAL NOTES

### AVAILABILITY OF ELECTRONIC FILES

MICRO STATION AND GEOPAK FILES OF THIS PROJECT WILL BE MADE AVAILABLE TO THE CONTRACTOR. IF THERE IS A CONFLICT BETWEEN THE ELECTRONIC FILES AND THE PRINTED CONTRACT PLANS AND DOCUMENTS, THE PRINTED CONTRACT PLANS AND DOCUMENTS SHALL TAKE PRECEDENCE OVER THE ELECTRONIC FILES. THE CONTRACTOR SHALL ACCEPT ALL RISK ASSOCIATED WITH USING THE ELECTRONIC FILES AND SHALL HOLD THE DEPARTMENT HARMLESS FOR ANY ERRORS OR OMISSIONS IN THE ELECTRONIC FILES AND THE DATA CONTAINED THEREIN. ERRORS OR DELAYS RESULTING FROM THE USE OF THE ELECTRONIC FILES BY THE CONTRACTOR SHALL NOT RESULT IN AN EXTENSION OF TIME FOR ANY INTERIM OR FINAL COMPLETION DATE OR SHALL NOT BE CONSIDERED CAUSE FOR ADDITIONAL COMPENSATION. THE CONTRACTOR SHALL NOT USE, SHARE, OR DISTRIBUTE THESE ELECTRONIC FILES EXCEPT FOR THE PURPOSE OF CONSTRUCTING THIS CONTRACT. ANY CLAIMS BY THIRD PARTIES DUE TO USE OR ERRORS SHALL BE THE RESPONSIBILITY OF THE CONTRACTOR. THE CONTRACTOR SHALL INCLUDE THIS DISCLAIMER WITH THE TRANSFER OF THESE ELECTRONIC FILES TO ANY OTHER PARTIES AND SHALL INCLUDE APPROPRIATE LANGUAGE BINDING THEM TO SIMILAR RESPONSIBILITIES.

### PROPERTY OWNER ACCESS REQUIREMENTS

ACCESS MUST BE MAINTAINED TO ALL EXISTING PROPERTIES DURING CONSTRUCTION PER ARTICLE 107.09 UNLESS ARRANGEMENTS ARE MADE IN WRITING BY THE CONTRACTOR WITH THE PROPERTY OWNERS WITH A COPY TO THE ENGINEER FOR SHORT-TERM CLOSURES.

### BUTT JOINT CUTTING TIME RESTRICTION

BUTT JOINTS SHALL NOT BE MILLED MORE THAN THREE (3) DAYS PRIOR TO PLACEMENT OF THE BITUMINOUS SURFACE COURSE.

### PAVING SURFACE COURSE

CONTINUOUS PAVING OPERATIONS ON THE MAIN ROADWAY SHALL BE MAINTAINED AT ALL TIMES DURING THE CONSTRUCTION OF THE HOT-MIX ASPHALT SURFACE. NO INTERRUPTIONS FOR SIDE ROADS, ENTRANCES, TURN LANES, ETC. WILL BE ALLOWED.

### ENGINEERS FIELD OFFICE

ADD THE FOLLOWING SENTENCE TO THE END OF PARAGRAPH 670.02 (I) AND 670.04 (E): ALL OF THE TELEPHONE LINES PROVIDED SHALL HAVE UNPUBLISHED NUMBERS.

### AGGREGATE FOR DRIVEWAY REPLACEMENT

THE MATERIAL USED FOR CONSTRUCTION OF PERMANENT AGGREGATE DRIVEWAYS SHALL BE GRAVEL OR CRUSHED STONE AS DIRECTED BY THE ENGINEER, TO REPLACE IN KIND THE EXISTING AGGREGATE DRIVEWAYS. NO ADDITIONAL COMPENSATION SHALL BE PROVIDED FOR THIS REQUIREMENT BUT SHALL BE CONSIDERED AS INCLUDED IN THE COST OF THE PAY ITEM FOR THE AGGREGATE AS SPECIFIED ON THE PLANS.

FILE NAME = D468472-sht-gennote.dgn	USER NAME = taro.je	DESIGNED - DRAWN -	REVISED - REVISED -	<b>STATE OF ILLINOIS DEPARTMENT OF TRANSPORTATION</b>	<b>GENERAL NOTES, COMMITMENTS &amp; JOB SPECIFIC NOTES</b>	F.A.S. RTE.	SECTION	COUNTY	TOTAL SHEETS	SHEET NO.	
	PLDT SCALE = 200.0000' / IN.	CHECKED -	REVISED -			2400	106RS-2; 107RS-4; 108RS-3	KNOX	29	2	
	PLDT DATE = 12/18/2009	DATE -	REVISED -			CONTRACT NO. 68472					
						SCALE:	SHEET NO. 1 OF 3 SHEETS	STA.	TO STA.	ILLINOIS FED. AID PROJECT	

**ENVIRONMENTAL REVIEWS**

PRIOR TO THE USE OF ANY PROPOSED BORROW AREAS, USE AREAS (TEMPORARY ACCESS ROADS, DETOURS, RUN-AROUNDS, ETC.) AND/OR WASTE AREAS, THE CONTRACTOR SHALL FILE THE REQUIRED ENVIRONMENTAL RESOURCE REQUEST SURVEYS ACCORDING TO SECTION 107.22 OF THE STANDARD SPECIFICATIONS. THESE SURVEYS ARE REQUIRED IN ORDER FOR THE DEPARTMENT TO CONDUCT CULTURAL AND BIOLOGICAL RESOURCE SURVEYS FOR THE PROPOSED SITE.

PRIOR TO ANY WASTE MATERIALS BEING REMOVED FROM THE CONSTRUCTION SITE THE REQUIRED ENVIRONMENTAL RESOURCE SURVEYS WILL NEED TO BE OBTAINED AND FILED BY THE CONTRACTOR. EXCESS WASTE PRODUCTS REMOVED FROM THE CONSTRUCTION SITE SHALL BE DISPOSED OF AS REQUIRED IN SECTION 202.03 OF THE STANDARD SPECIFICATIONS.

ANY PROTRUDING METAL BARS SHALL BE REMOVED PRIOR TO THE DISPOSAL OF BROKEN CONCRETE AT APPROVED DISPOSAL SITES.

THE REQUIRED ENVIRONMENTAL RESOURCE DOCUMENTATION SHALL INCLUDE THE FOLLOWING:

- \* BDE FORM 2289 (ENVIRONMENTAL SURVEY REQUEST)
- \* A LOCATION MAP SHOWING THE SIZE LIMITS AND LOCATION OF THE USE AREA
- \* SIGNED PROPERTY OWNER AGREEMENT FORM-D4 PI0100
- \* COLOR PHOTOGRAPHS DEPICTING THE USE AREA
- \* BORROW AREA ENTRY AGREEMENT FORM-D4 PI0101

PLEASE NOTE THAT A MINIMUM OF TWO WEEKS SHALL BE ALLOWED FOR THE DISTRICT TO OBTAIN THE REQUIRED ENVIRONMENTAL CLEARANCES.

**HOT-MIX ASPHALT MIXTURE REQUIREMENTS**

MIXTURE USE(S):	SURFACE COURSE, 1 1/2"	LEVELING BINDER, 3/4"	INCIDENTAL SURF. CSE.	CLASS D PATCH
RAP % (MAX) **:	15%	10%	15%	25%
AC/PG:	PG 64-22	SBS OR SBR 70-22	PG 64-22	PG 64-22
DESIGN AIR VOIDS:	4.0% @ N=50	3.0% @ N=50	4.0% @ N=50	4.0% @ N=50
MIXTURE COMPOSITION: (GRADATION MIXTURE)	IL 9.5 OR IL 12.5	IL 4.75	IL 9.5 OR IL 12.5	IL 19.0
FRICTION AGGREGATE	MIXTURE D	N. A.	MIXTURE C	N. A.

\*\* IF THE RAP OPTION IS SELECTED, THE ASPHALT CEMENT GRADE MAY NEED TO BE ADJUSTED; THIS WILL BE DETERMINED BY THE ENGINEER.

**PAVEMENT STATIONING NUMBERS & PLACEMENT**

THE CONTRACTOR SHALL PROVIDE LABOR AND MATERIALS REQUIRED TO IMPRINT PAVEMENT STATION NUMBERS IN THE FINISHED SURFACE OF THE PAVEMENT AND/OR OVERLAY. THE NUMBERS SHALL BE APPROXIMATELY 3/4 INCH (20MM) WIDE, 5 INCHES (125 MM) HIGH AND 5/8 INCH (15 MM) DEEP.

THE PAVEMENT STATION NUMBERS SHALL BE INSTALLED AS SPECIFIED HEREIN:

INTERVAL – 200 FEET (ENGLISH STATIONING) OR 100 METERS (METRIC STATIONING)

BOTTOM OF NUMBERS – 6 INCHES (150 MM) FROM THE INSIDE EDGE OF THE PAVEMENT MARKING

LOCATION:

- \* 2, 3, & 5 LANE PAVEMENTS – RIGHT EDGE OF PAVEMENT IN DIRECTION OF INCREASING STATIONS
- \* MULTI-LANE DIVIDED ROADWAYS – OUTSIDE EDGE OF PAVEMENT IN BOTH DIRECTIONS
- \* RAMPS – ALONG BASELINE EDGE OF PAVEMENT

POSITION – STATIONS SHALL BE PLACED SO THEY CAN BE READ FROM THE ADJACENT SHOULDER

FORMAT – ENGLISH (METRIC) PAVEMENT STATIONS SHALL USE THIS FORMAT \*XXX (XX+X00)" WHERE X REPRESENTS THE PAVEMENT STATION.

THIS WORK WILL NOT BE PAID FOR SEPARATELY, BUT WILL BE CONSIDERED INCLUDED IN THE COST OF THE ASSOCIATED PAVEMENT AND/OR OVERLAY PAY ITEMS.

# COMMITMENTS

COMMITMENTS ARE NOT TO BE ALTERED WITHOUT THE WRITTEN APPROVAL OF ALL PARTIES TO WHICH THE COMMITMENT WAS MADE.

NO COMMITMENTS HAVE BEEN MADE ON THIS PROJECT.

# JOB SPECIFIC NOTES

## 2' SURFACE REMOVAL AT VARIOUS LOCATIONS

CONTRACTOR SHALL USE 1:240 TRANSITION RATE FOR THE SURFACE REMOVAL FROM 1 1/2" TO 2" AT VARIOUS LOCATIONS THROUGHOUT THIS PROJECT, WHERE THE PROPOSED 2 1/4" OVERLAY WILL MATCH EXISTING PCC DRIVE WAY, AND CURB & GUTTER.

ALL WORK WILL NOT BE PAID SEPARATELY, IT SHALL BE INCLUDED IN THE COST OF HMA SURFACE REMOVAL 1 1/2" (SQ YDS).

LOCATIONS FOR PCC DRIVEWAYS ARE THE FOLLOWING: COUNTY HIGHWAY OFFICE NEAR STA. 115+54, POWER PLANT NEAR STA. 242+00 AND PRIVATE ENTRANCE NEAR STA. 480+89.

FOR CURB & GUTTER LOCATIONS, SEE TYPICAL SECTIONS.

## PAVEMENT MARKING AT "NO PASSING ZONES"

PRIOR TO PLACING CENTERLINE STRIPING, CONTACT THE DISTRICT BUREAU OF OPERATIONS FOR A "NO PASSING ZONE" EVALUATION.

## PAVEMENT MARKING AT S.N. 048-0031 & S.N. 048-0084

THE STRUCTURES ARE BEING OMITTED FROM THIS PROJECT, EXCEPT FOR THE PLACEMENT OF PAVEMENT MARKINGS.

FILE NAME = D468472-sht-gennote.dgn	USER NAME = torojo	DESIGNED -	REVISED -	<b>STATE OF ILLINOIS DEPARTMENT OF TRANSPORTATION</b>	<b>GENERAL NOTES, COMMITMENTS &amp; JOB SPECIFIC NOTES</b>	F.A.S. RTE.	SECTION	COUNTY	TOTAL SHEETS	SHEET NO.	
		DRAWN -	REVISED -			2400	106RS-2; 107RS-4; 108RS-3	KNOX	29	4	
		CHECKED -	REVISED -			<b>CONTRACT NO. 68472</b>					
		DATE -	REVISED -			SCALE:	SHEET NO. 3 OF 3 SHEETS	STA.	TO STA.	ILLINOIS FED. AID PROJECT	
		PLOT SCALE = 200.0000 ' / IN.									
		PLOT DATE = 12/18/2009									

# SUMMARY OF QUANTITIES

CODE NO.	PAY ITEM	UNIT	TOTAL QUANTITY	1000 - 100% STATE
40200100	AGGREGATE SURFACE COURSE, TYPE A	TON	90	90
40600215	POLYMERIZED BITUMINOUS MATERIALS (PRIME COAT)	TON	101	101
40600300	AGGREGATE (PRIME COAT)	TON	585	585
40600826	POLYMERIZED LEVELING BINDER (MACHINE METHOD), IL-4.75, N50	TON	8,087	8,087
40600895	CONSTRUCTING TEST STRIP	EACH	1	1
40600982	HOT-MIX ASPHALT SURFACE REMOVAL - BUTT JOINT	SQ YD	558	558
40600990	TEMPORARY RAMP	SQ YD	136	136
40603335	HOT-MIX ASPHALT SURFACE COURSE, MIX "D", N50	TON	16,175	16,175
40800050	INCIDENTAL HOT-MIX ASPHALT SURFACING	TON	56	56
44000155	HOT-MIX ASPHALT SURFACE REMOVAL, 1 1/2"	SQ YD	194,191	194,191
44201803	CLASS D PATCHES, TYPE II, 13 INCH	SQ YD	2,065	2,065
44201807	CLASS D PATCHES, TYPE III, 13 INCH	SQ YD	331	331
44201809	CLASS D PATCHES, TYPE IV, 13 INCH	SQ YD	80	80
44201827	CLASS D PATCHES, TYPE II, 15 INCH	SQ YD	175	175
48101200	AGGREGATE SHOULDERS, TYPE B	TON	5,812	5,812
48203100	HOT-MIX ASPHALT SHOULDERS	TON	289	289
60100060	CONCRETE HEADWALL FOR PIPE DRAINS	EACH	3	3
* 63000001	STEEL PLATE BEAM GUARD RAIL, TYPE A, 6 FOOT POSTS	FOOT	13	13
* 63100167	TRAFFIC BARRIER TERMINAL, TYPE 1 (SPECIAL) TANGENT	EACH	26	26
63200310	GUARDRAIL REMOVAL	FOOT	1,286	1,286
67000400	ENGINEER'S FIELD OFFICE, TYPE A	CAL MO	6	6
67100100	MOBILIZATION	L SUM	1	1

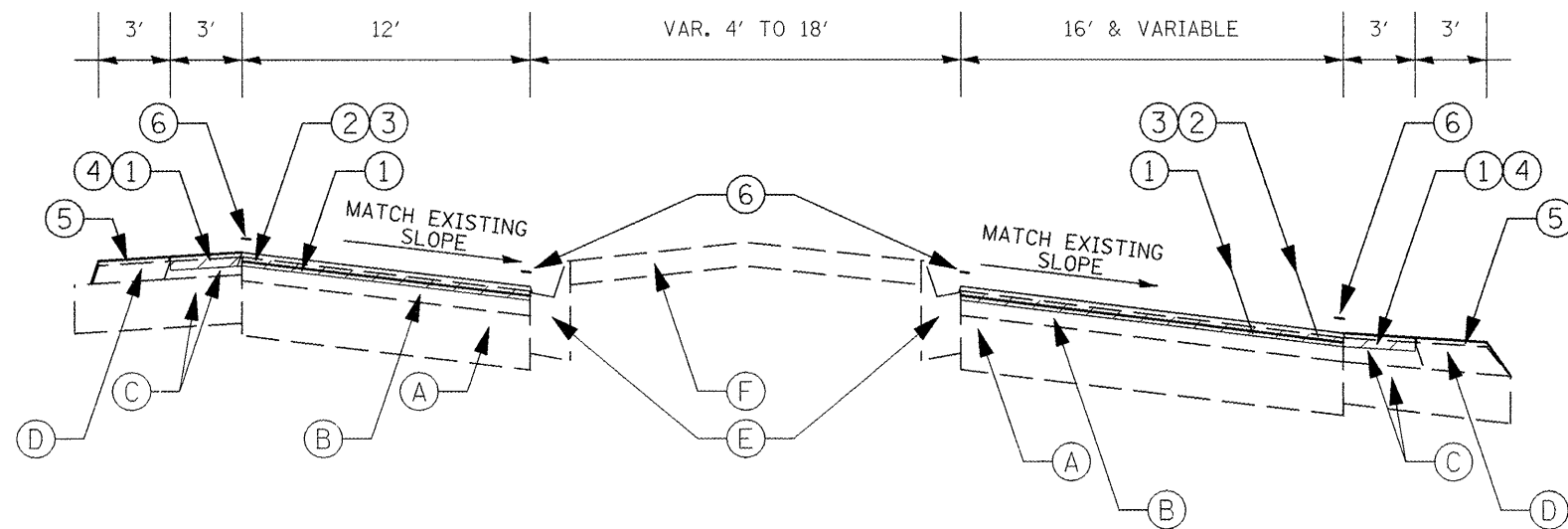
\* SPECIALTY ITEM

# SUMMARY OF QUANTITIES

CODE NO.	PAY ITEM	UNIT	TOTAL QUANTITY	1000 - 100% STATE
70100450	TRAFFIC CONTROL AND PROTECTION, STANDARD 701201	L SUM	1	1
70100460	TRAFFIC CONTROL AND PROTECTION, STANDARD 701306	L SUM	1	1
70100600	TRAFFIC CONTROL AND PROTECTION, STANDARD 701336	L SUM	1	1
70300100	SHORT-TERM PAVEMENT MARKING	FOOT	22,166	22,166
70300210	TEMPORARY PAVEMENT MARKING - LETTERS AND SYMBOLS	SQ FT	32	32
70300220	TEMPORARY PAVEMENT MARKING - LINE 4"	FOOT	208,664	208,664
70300250	TEMPORARY PAVEMENT MARKING - LINE 8"	FOOT	500	500
70300260	TEMPORARY PAVEMENT MARKING - LINE 12"	FOOT	174	174
70300280	TEMPORARY PAVEMENT MARKING - LINE 24"	FOOT	52	52
70301000	WORK ZONE PAVEMENT MARKING REMOVAL	SQ FT	2,463	2,463
* 78200410	GUARDRAIL MARKERS, TYPE A	EACH	26	26
* 78201000	TERMINAL MARKER - DIRECT APPLIED	EACH	26	26
X0301512	GUARDRAIL AGGREGATE EROSION CONTROL	TON	133	133
X0322729	MATERIAL TRANSFER DEVICE	TON	16,464	16,464
X2503100	MOWING	UNIT	747	747
X7015005	CHANGEABLE MESSAGE SIGN	CAL DA	6	6
* X7800600	URETHANE PAVEMENT MARKING - LETTERS AND SYMBOLS, SPECIAL	SQ FT	32	32
* X7800610	URETHANE PAVEMENT MARKING - LINE 4"	FOOT	208,664	208,664
* X7800640	URETHANE PAVEMENT MARKING - LINE 8"	FOOT	500	500
* X7800650	URETHANE PAVEMENT MARKING - LINE 12"	FOOT	174	174
* X7800680	URETHANE PAVEMENT MARKING - LINE 24"	FOOT	52	52

\* SPECIALTY ITEM

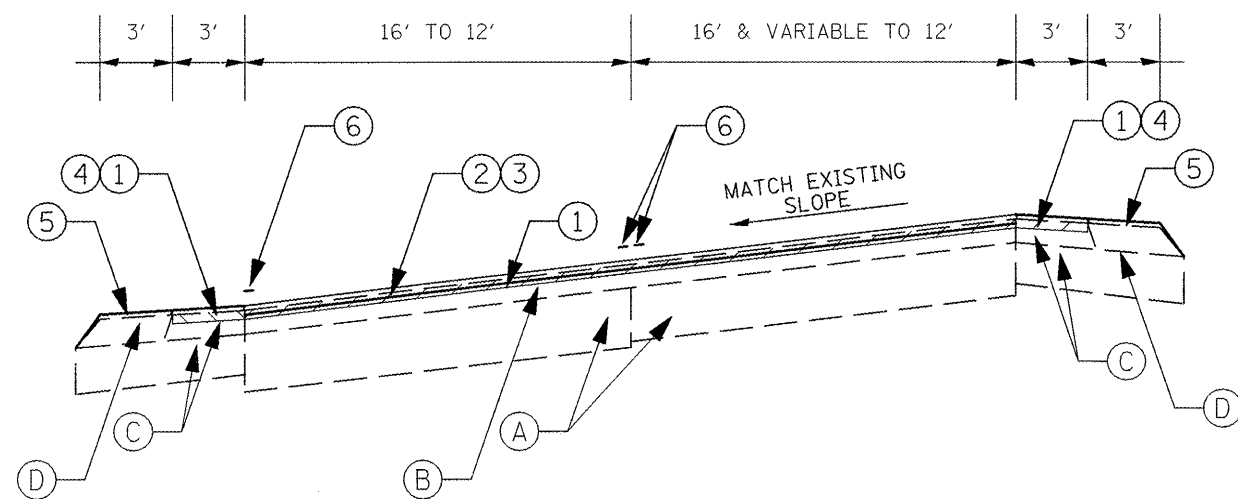




LT. & RT. STA. 52+03.09 TO STA. 60+16.53

LEGEND - EXISTING

- (A) PCC PAVEMENT
- (B) BITUMINOUS OVERLAY
- (C) BITUMINOUS SHOULDER
- (D) AGGREGATE SHOULDER
- (E) COMB. CONC. CURB & GUTTER  
TYPE M-6.12 OR CONC. GUTTER
- (F) CONC. MEDIAN SURFACE OR GRASS MEDIAN
- (G) WIDENING



LT. & RT. STA. 60+16.53 TO STA. 83+43.00 (BK)  
 LT. & RT. STA. 39+41.00 (AH) TO STA. 42+44.96

LEGEND - PROPOSED

- (1) HMA SURFACE REMOVAL, 1 1/2"
- (2) HMA - LEVELING BINDER, 3/4"
- (3) HMA - SURFACE CSE., 1-1/2"
- (4) BITUMINOUS SHOULDER
- (5) AGGREGATE SHOULDER, TYPE B
- (6) URETHANE PAVEMENT MARKING

FILE NAME =  
D468472-ah-typical.dgn

USER NAME = toraja

DESIGNED -

REVISED -

DRAWN -

REVISED -

CHECKED -

REVISED -

DATE -

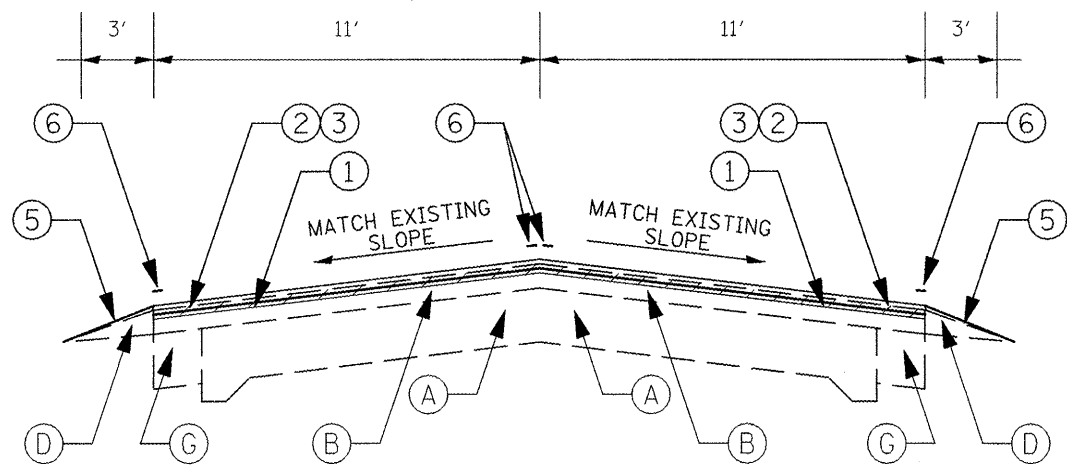
REVISED -

STATE OF ILLINOIS  
DEPARTMENT OF TRANSPORTATION

TYPICAL SECTIONS

SCALE: SHEET NO. 1 OF SHEETS STA. TO STA.

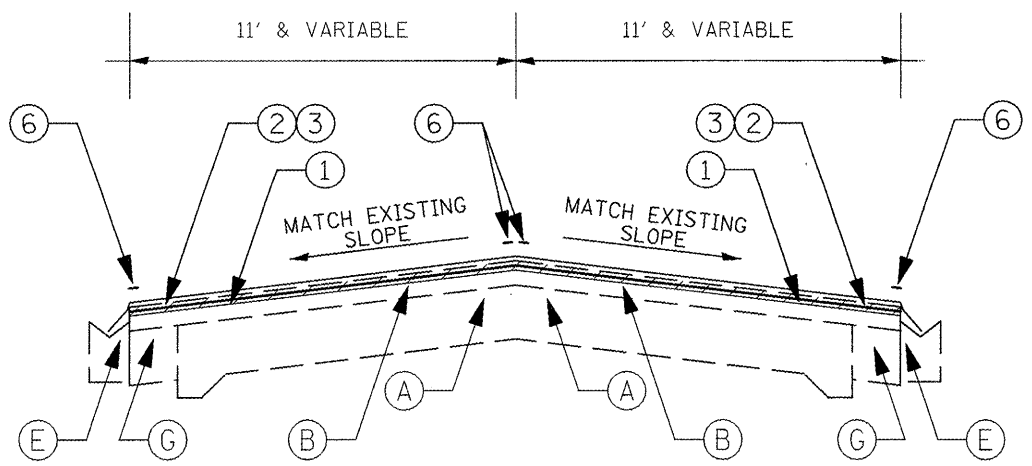
F.A.S. RTE.	SECTION	COUNTY	TOTAL SHEETS	SHEET NO.
2400	106RS-2; 107RS-4; 108RS-3	KNOX	29	7
CONTRACT NO. 68472				
ILLINOIS FED. AID PROJECT				



**LEGEND - EXISTING**

- (A) PCC PAVEMENT
- (B) BITUMINOUS OVERLAY
- (C) BITUMINOUS SHOULDER
- (D) AGGREGATE SHOULDER
- (E) COMB. CONC. CURB & GUTTER  
TYPE M-6.12 OR CONC. GUTTER
- (F) CONC. MEDIAN SURFACE OR GRASS MEDIAN
- (G) WIDENING

LT. & RT. STA. 42+44.96 TO STA. 174+94.01  
 LT. & RT. STA. 189+00.00 TO STA. 222+59.00  
 RT. STA. 235+23.00 TO STA. 427+00.00  
 LT. STA. 235+23.00 TO STA. 433+60.00  
 RT. STA. 443+50.00 TO STA. 461+28.75  
 LT. STA. 443+90.00 TO STA. 461+28.75

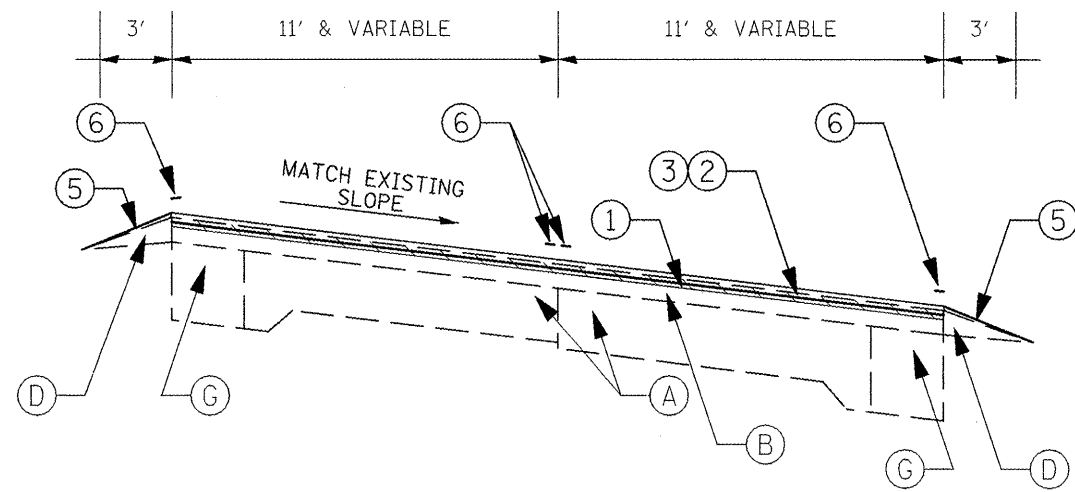


**LEGEND - PROPOSED**

- (1) HMA SURFACE REMOVAL, 1 1/2"
- (2) HMA - LEVELING BINDER, 3/4"
- (3) HMA - SURFACE CSE., 1-1/2"
- (4) BITUMINOUS SHOULDER
- (5) AGGREGATE SHOULDER, TYPE B
- (6) URETHANE PAVEMENT MARKING

LT. & RT. STA. 174+94.01 TO STA. 189+00.00  
 LT. & RT. STA. 222+59.00 TO STA. 235+23.00  
 RT. STA. 427+00.00 TO STA. 443+50.00  
 LT. STA. 433+60.00 TO STA. 443+90.00

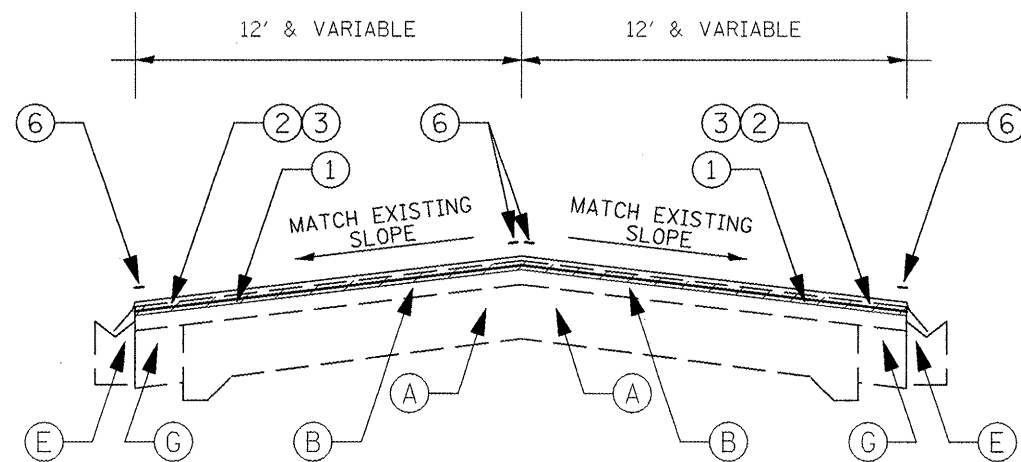




LT. & RT. STA. 467+22.71 TO STA. 474+80.00  
 LT. & RT. STA. 505+00.06 TO STA. 521+50.82(BK)=522+32.54(AH)

LEGEND - EXISTING

- (A) PCC PAVEMENT
- (B) BITUMINOUS OVERLAY
- (C) BITUMINOUS SHOULDER
- (D) AGGREGATE SHOULDER
- (E) COMB. CONC. CURB & GUTTER  
TYPE M-6.12 OR CONC. GUTTER
- (F) CONC. MEDIAN SURFACE OR GRASS MEDIAN
- (G) WIDENING



LT. & RT. STA. 474+80.00 TO STA. 493+00.00  
 LT. & RT. STA. 504+00.00 TO STA. 505+00.06

LEGEND - PROPOSED

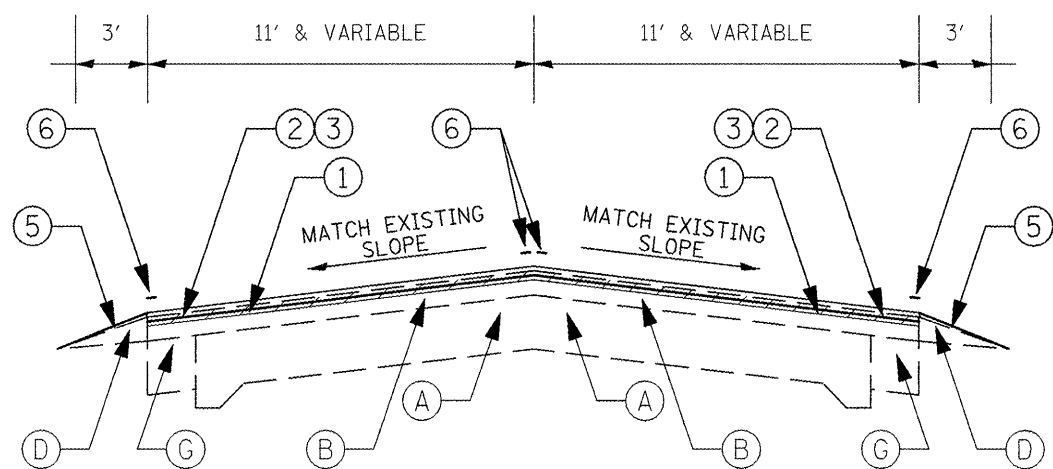
- (1) HMA SURFACE REMOVAL, 1 1/2"
- (2) HMA - LEVELING BINDER, 3/4"
- (3) HMA - SURFACE CSE., 1-1/2"
- (4) BITUMINOUS SHOULDER
- (5) AGGREGATE SHOULDER, TYPE B
- (6) URETHANE PAVEMENT MARKING

FILE NAME = D468472-shr-typical.dgn	USER NAME = taraja	DESIGNED -	REVISED -
		DRAWN -	REVISED -
		CHECKED -	REVISED -
		DATE -	REVISED -

**STATE OF ILLINOIS  
DEPARTMENT OF TRANSPORTATION**

<b>TYPICAL SECTIONS</b>			
SCALE:	SHEET NO. 1 OF	SHEETS	STA. TO STA.

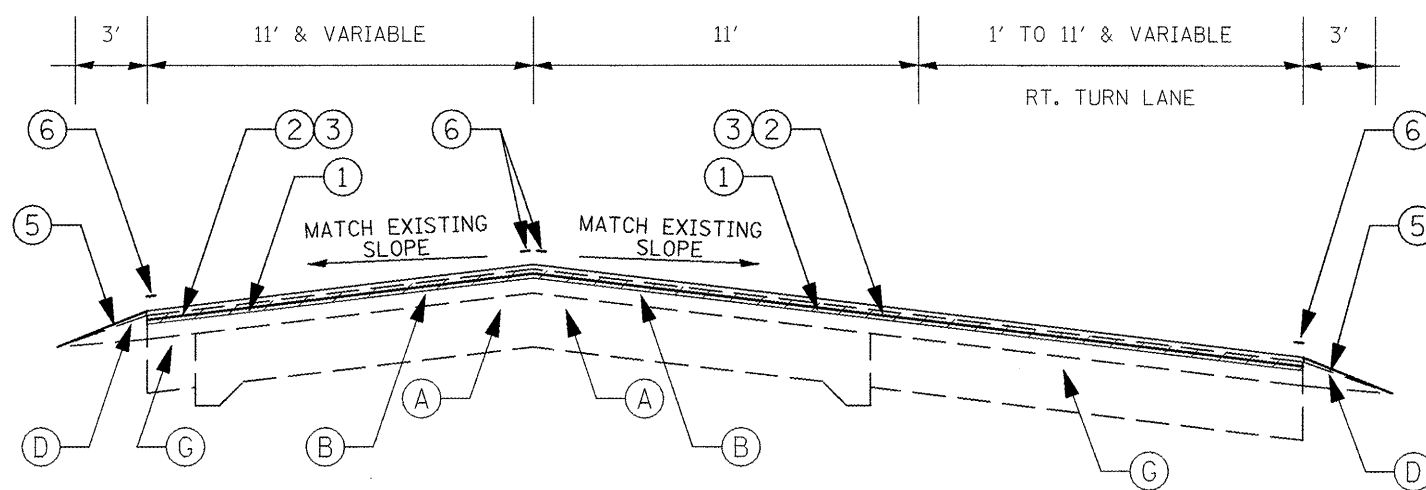
F.A.S. RTE.	SECTION	COUNTY	TOTAL SHEETS	SHEET NO.
2400	106RS-2; 107RS-4; 108RS-3	KNOX	29	9
CONTRACT NO. 68472				
ILLINOIS FED. AID PROJECT				



LT. & RT. STA. 493+00.00 TO STA. 504+00.00  
 LT. & RT. STA. 521+50.82(BK)=522+32.54(AH) TO STA. 671+68.90  
 LT. & RT. STA. 679+68.90 TO STA. 755+19.00

LEGEND - EXISTING

- (A) PCC PAVEMENT
- (B) BITUMINOUS OVERLAY
- (C) BITUMINOUS SHOULDER
- (D) AGGREGATE SHOULDER
- (E) COMB. CONC. CURB & GUTTER  
TYPE M-6.12 OR CONC. GUTTER
- (F) CONC. MEDIAN SURFACE OR GRASS MEDIAN
- (G) WIDENING



LT. & RT. STA. 671+68.90 TO STA. 679+68.90

LEGEND - PROPOSED

- (1) HMA SURFACE REMOVAL, 1 1/2"
- (2) HMA - LEVELING BINDER, 3/4"
- (3) HMA - SURFACE CSE., 1-1/2"
- (4) BITUMINOUS SHOULDER
- (5) AGGREGATE SHOULDER, TYPE B
- (6) URETHANE PAVEMENT MARKING



ENGINEER'S FIELD OFFICE TYPE A	
LOCATION	CAL MO
JOBSITE	6
<b>TOTAL</b>	<b>6</b>

CONSTRUCTING TEST STRIP	
LOCATION	EACH
JOBSITE	1
<b>TOTAL</b>	<b>1</b>

TRAFFIC CONTROL AND PROTECTION			
LOCATION	STD. 701201	STD. 701306	STD. 701336
	L SUM	L SUM	L SUM
JOBSITE	1	1	1
<b>TOTAL</b>	<b>1</b>	<b>1</b>	<b>1</b>

MATERIAL TRANSFER DEVICE	
LOCATION	TON
SURFACE	16,182.98
HMA SHOULDERS	289.29
<b>TOTAL</b>	<b>16,472</b>

MOWING	
LOCATION	UNITS
JOBSITE	747
<b>TOTAL</b>	<b>747</b>

INCIDENTAL HMA SURFACING	
LOCATION	TON
MAILBOX TURNOUTS, ENTRANCES & SIDEROADS	56
<b>TOTAL</b>	<b>56</b>

CONCRETE HEADWALL FOR PIPE DRAINS	
LOCATION	EACH
	3
<b>TOTAL</b>	<b>3</b>

CLASS D PATCHING SCHEDULE				
PATCHING UNIT	13 IN			15 IN
	TYPE II	TYPE III	TYPE IV	TYPE II
	SQ YD	SQ YD	SQ YD	SQ YD
1	253.33	148.67	26.67	
2	125.33	74.67		
3	304.00	20.00		
4	129.33	16.00		
5	146.67	40.00	53.33	
6	137.33			
7	66.67	32.00		
8				174.67
9	221.30			
10	330.70			
11	350.70			
<b>TOTAL</b>	<b>2,065</b>	<b>331</b>	<b>80</b>	<b>175</b>

CONSTRUCTION LAYOUT	
LOCATION	LSUM
JOBSITE	1
<b>TOTAL</b>	<b>1</b>

AGGREGATE SURFACE COURSE, TYPE A	
LOCATION	TON
ENTRANCES	90
<b>TOTAL</b>	<b>90</b>

SHORT-TERM PAVEMENT MARKING		
LOCATION	FOOT	NO. OF APPLICATIONS
JOBSITE	7,388.72	3
<b>TOTAL</b>	<b>22,166 FOOT</b>	

WORK ZONE PAVEMENT MARKING REMOVAL		
LOCATION	FOOT	WIDTH (IN)
JOBSITE	7,388.72	4
<b>TOTAL</b>	<b>2,463 SQ FT</b>	

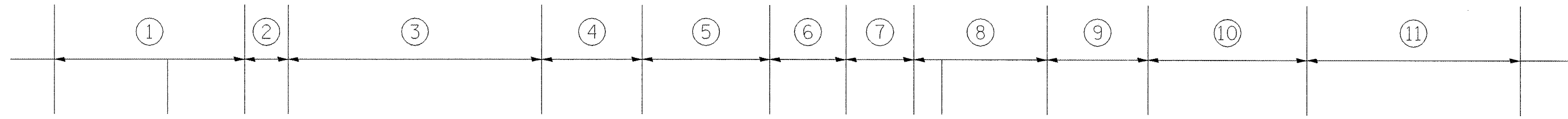
URETHANE PAVEMENT MARKING SCHEDULE							
LOCATION	LETTERS & SYMBOLS, SPECIAL	LINE 4"		LINE 8"	LINE 12"		LINE 24"
		WHITE	YELLOW	WHITE	WHITE	YELLOW	WHITE
		SQ FT	FOOT	FOOT	FOOT	FOOT	FOOT
JOBSITE	31.2	148,276	60,388	500	96	78	52
<b>SUB-TOTAL</b>	<b>31</b>	<b>148,276</b>	<b>60,388</b>	<b>500</b>	<b>96</b>	<b>78</b>	<b>52</b>
<b>TOTAL</b>	<b>31</b>	<b>208,664</b>		<b>500</b>	<b>174</b>		<b>52</b>

NOTE: PRIOR TO PLACING CENTERLINE STRIPING, CONTACT THE DISTRICT BUREAU OF OPERATIONS FOR A "NO PASSING ZONE" EVALUATION.

GUARDRAIL SCHEDULE								
LOCATION			GUARDRAIL REMOVAL	STEEL PLATE BEAM GUARDRAIL, TYPE A, 6 FOOT POSTS	GUARDRAIL MARKERS, TYPE A	TRAFFIC BARRIER TERMINAL, TYPE 1 (SPECIAL) TANGENT	TERMINAL MARKER - DIRECT APPLIED	GUARDRAIL AGGREGATE EROSION CONTROL
STA.	TO	STA.	FOOT	FOOT	EACH	EACH	EACH	TON
RT. 79+48.00	TO	81+10.00	100		2	2	2	10.12
LT. 80+51.00	TO	81+99.00	100		2	2	2	10.12
RT. 176+78.00	TO	180+79.00	100		2	2	2	10.12
LT. 176+78.00	TO	182+26.00	100		2	2	2	10.12
LT. 224+57.00	TO	229+00.00	100		2	2	2	10.12
RT. 225+00.00	TO	229+73.00	100		2	2	2	10.12
RT. 322+36.00	TO	324+08.00	100		2	2	2	10.12
RT. 334+46.00	TO	336+01.00	100		2	2	2	10.12
LT. 335+15.00	TO	336+27.50	86	12.5	2	2	2	8.71
LT. 454+45.00	TO	455+51.00	100		2	2	2	10.12
RT. 454+45.00	TO	455+51.00	100		2	2	2	10.12
RT. 460+23.00	TO	460+73.00	50		1	1	1	5.06
LT. 460+11.00	TO	460+61.00	50		1	1	1	5.06
RT. 485+46.00	TO	490+06.00	100		2	2	2	10.12
<b>TOTAL</b>			<b>1,286</b>	<b>13</b>	<b>26</b>	<b>26</b>	<b>26</b>	<b>130</b>

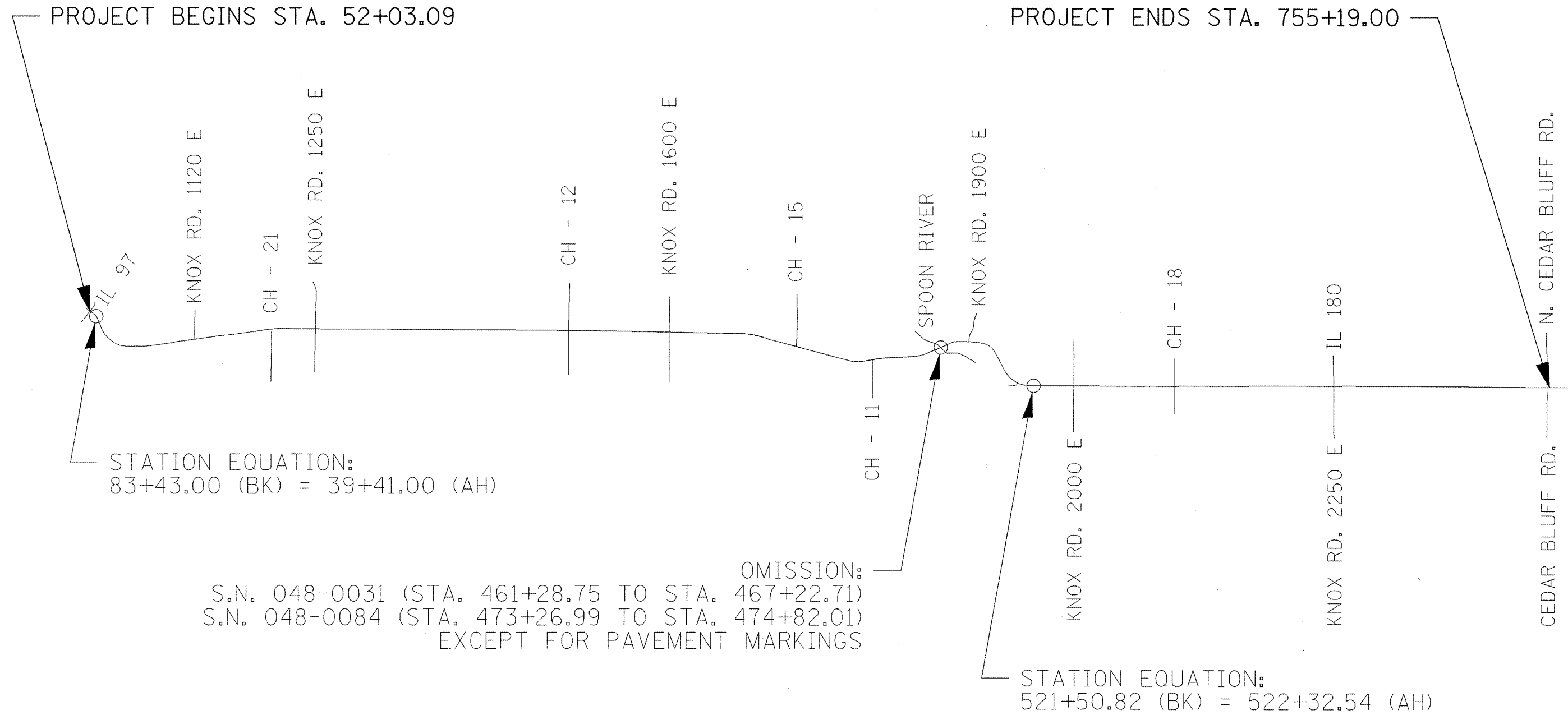
TEMPORARY PAINT PAVEMENT MARKING SCHEDULE							
LOCATION	LETTERS & SYMBOLS, SPECIAL	LINE 4"		LINE 8"	LINE 12"		LINE 24"
		WHITE	YELLOW	WHITE	WHITE	YELLOW	WHITE
		SQ FT	FOOT	FOOT	FOOT	FOOT	FOOT
JOBSITE	31.2	148,276	60,388	500	96	78	52
<b>SUB-TOTAL</b>	<b>31</b>	<b>148,276</b>	<b>60,388</b>	<b>500</b>	<b>96</b>	<b>78</b>	<b>52</b>
<b>TOTAL</b>	<b>31</b>	<b>208,664</b>		<b>500</b>	<b>174</b>		<b>52</b>

PATCHING UNITS



PROJECT BEGINS STA. 52+03.09

PROJECT ENDS STA. 755+19.00



STATION EQUATION:  
83+43.00 (BK) = 39+41.00 (AH)

OMISSION:  
S.N. 048-0031 (STA. 461+28.75 TO STA. 467+22.71)  
S.N. 048-0084 (STA. 473+26.99 TO STA. 474+82.01)  
EXCEPT FOR PAVEMENT MARKINGS

STATION EQUATION:  
521+50.82 (BK) = 522+32.54 (AH)

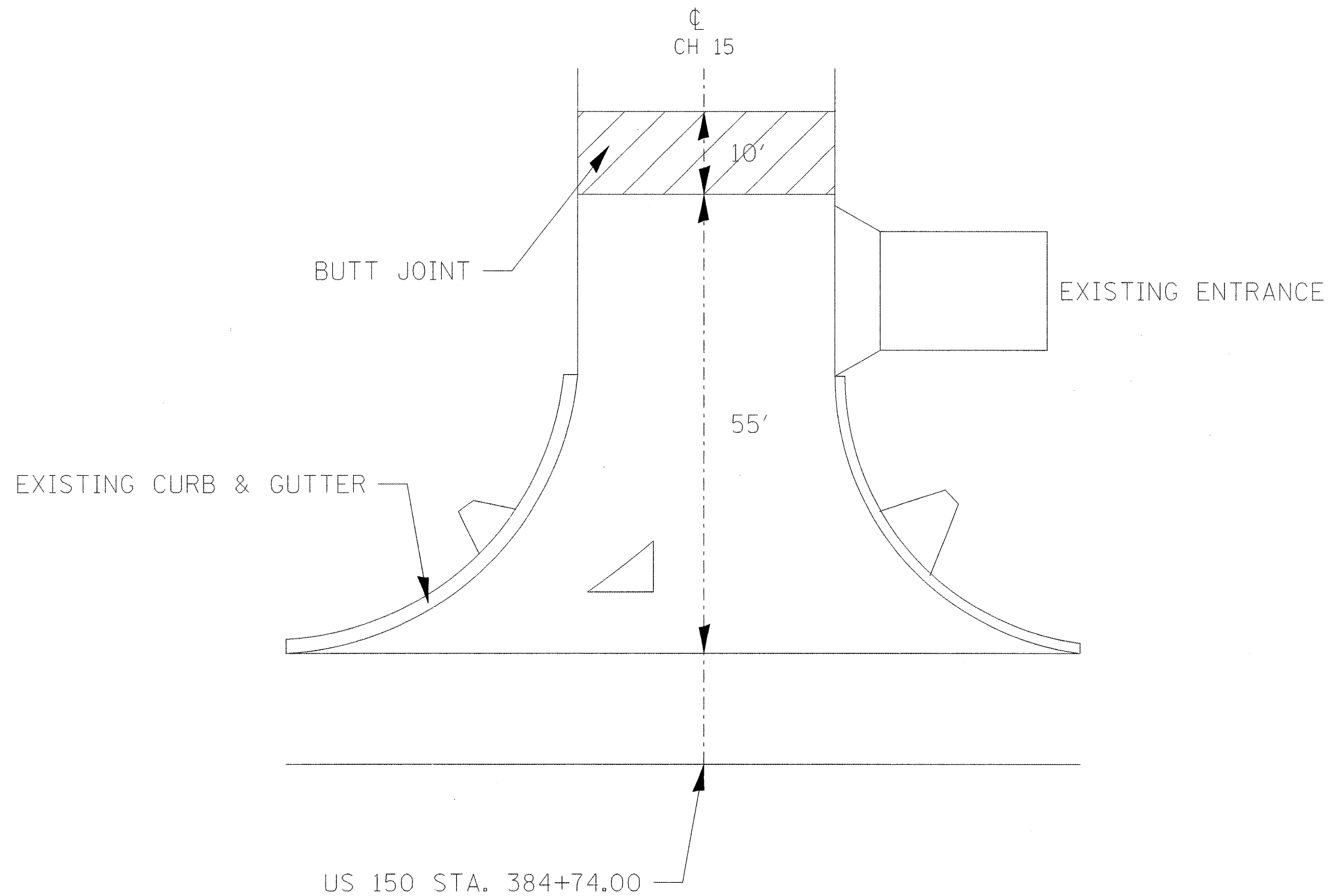
FILE NAME = D468472-sht-details.dgn	USER NAME = saraja	DESIGNED -	REVISED -
		DRAWN -	REVISED -
	PLOT SCALE = 200.0000' / IN.	CHECKED -	REVISED -
	PLOT DATE = 12/18/2009	DATE -	REVISED -

**STATE OF ILLINOIS  
DEPARTMENT OF TRANSPORTATION**

<b>LINE DIAGRAM</b>			
SCALE:	SHEET NO. 1 OF 1 SHEETS	STA.	TO STA.

F.A.S. RTE.	SECTION	COUNTY	TOTAL SHEETS	SHEET NO.
2400	106RS-2, 107RS-4, 108RS-3	KNOX	29	14
CONTRACT NO. 68472				
ILLINOIS FED. AID PROJECT				





FILE NAME =  
 0468472-sht-details.dgn

USER NAME = toro.ja  
 PLOT SCALE = 200.0000' / IN.  
 PLOT DATE = 12/18/2009

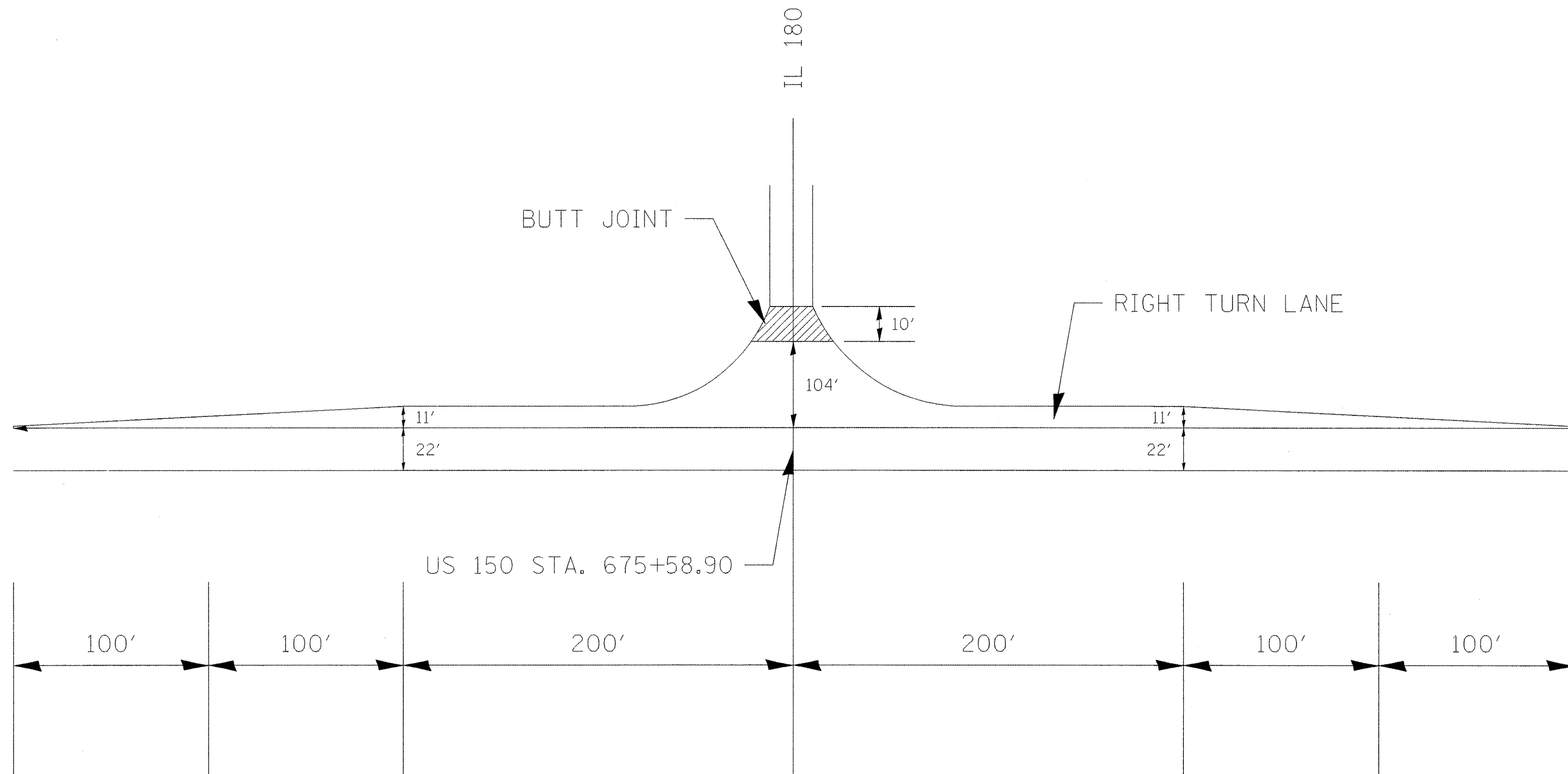
DESIGNED -  
 DRAWN -  
 CHECKED -  
 DATE -

REVISED -  
 REVISED -  
 REVISED -  
 REVISED -

**STATE OF ILLINOIS**  
**DEPARTMENT OF TRANSPORTATION**

**SIDEROAD DETAIL**  
**CH 15 (DAHINDA RD.)**  
 NOT TO SCALE    SHEET NO. 1 OF 1 SHEETS    STA.    TO STA.

F.A.S. RTE.	SECTION	COUNTY	TOTAL SHEETS	SHEET NO.
2400	106RS-2; 107RS-4; 108RS-3	KNOX	29	15
<b>CONTRACT NO. 68472</b>				
ILLINOIS FED. AID PROJECT				



FILE NAME = D468472-shd-details.dgn	USER NAME = toro,ja	DESIGNED -	REVISED -
		DRAWN -	REVISED -
		CHECKED -	REVISED -
		DATE -	REVISED -

**STATE OF ILLINOIS  
DEPARTMENT OF TRANSPORTATION**

<b>SIDEROAD DETAIL IL 180</b>	
NOT TO SCALE	SHEET NO. 1 OF 1 SHEETS
STA.	TO STA.

F.A.S. RTE.	SECTION	COUNTY	TOTAL SHEETS	SHEET NO.
2400	106RS-2; 107RS-4; 108RS-3	KNOX	29	16
<b>CONTRACT NO. 68472</b>				
ILLINOIS FED. AID PROJECT				

PROP. BIT. OVERLAY

3'

1/4" MAX.

EXISTING BIT. SURF.

LENGTH TO MATCH EXISTING SURFACE

EXISTING PAVEMENT & OVERLAY

FILE NAME =  
0468472-sht-details.dgn

USER NAME = torojs  
PLOT SCALE = 200.0000' / IN.  
PLOT DATE = 12/18/2009

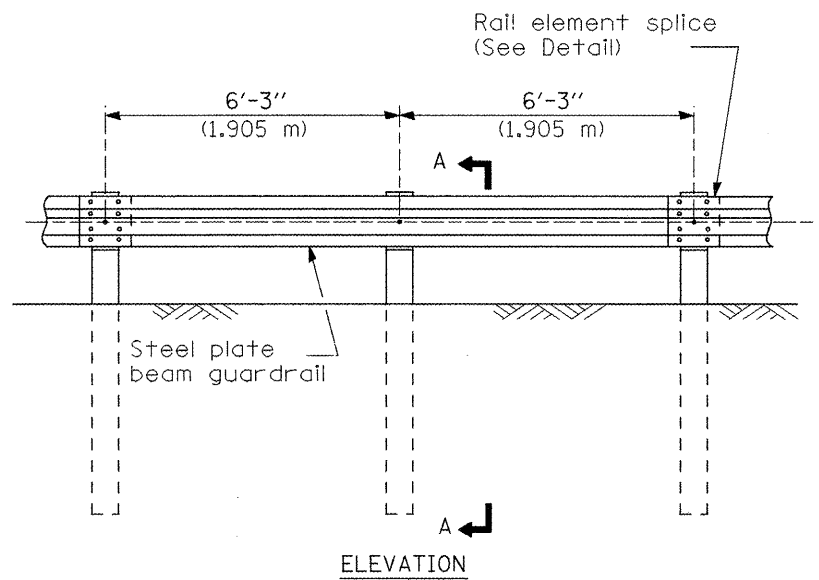
DESIGNED -	REVISED -
DRAWN -	REVISED -
CHECKED -	REVISED -
DATE -	REVISED -

**STATE OF ILLINOIS  
DEPARTMENT OF TRANSPORTATION**

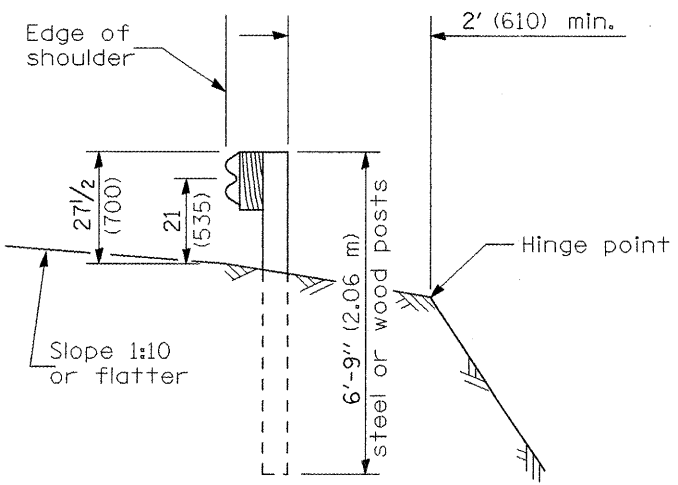
**ENTRANCES AND MAILBOX TURNOUTS**

NOT TO SCALE    SHEET NO. 1 OF 1 SHEETS    STA.    TO STA.

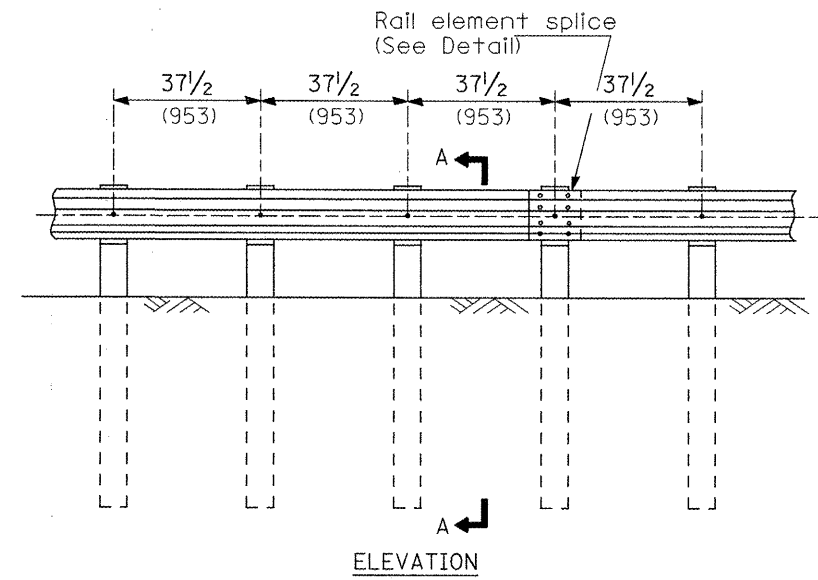
F.A.S. RTE.	SECTION	COUNTY	TOTAL SHEETS	SHEET NO.
2400	106RS-2; 107RS-4; 108RS-3	KNOX	29	17
CONTRACT NO. 68472				
ILLINOIS FED. AID PROJECT				



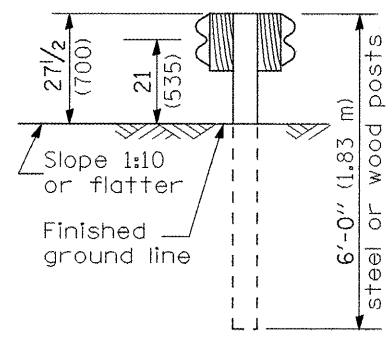
**TYPE A**  
6'-3" (1.905 m) Typical post spacing



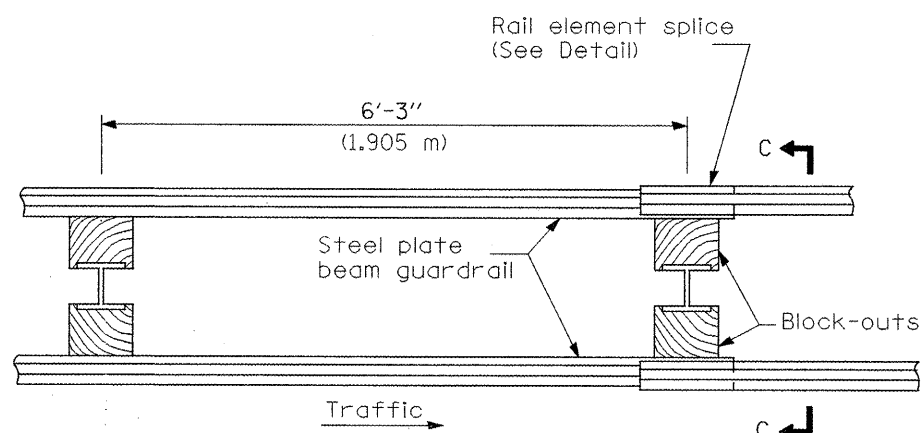
**SECTION A-A**



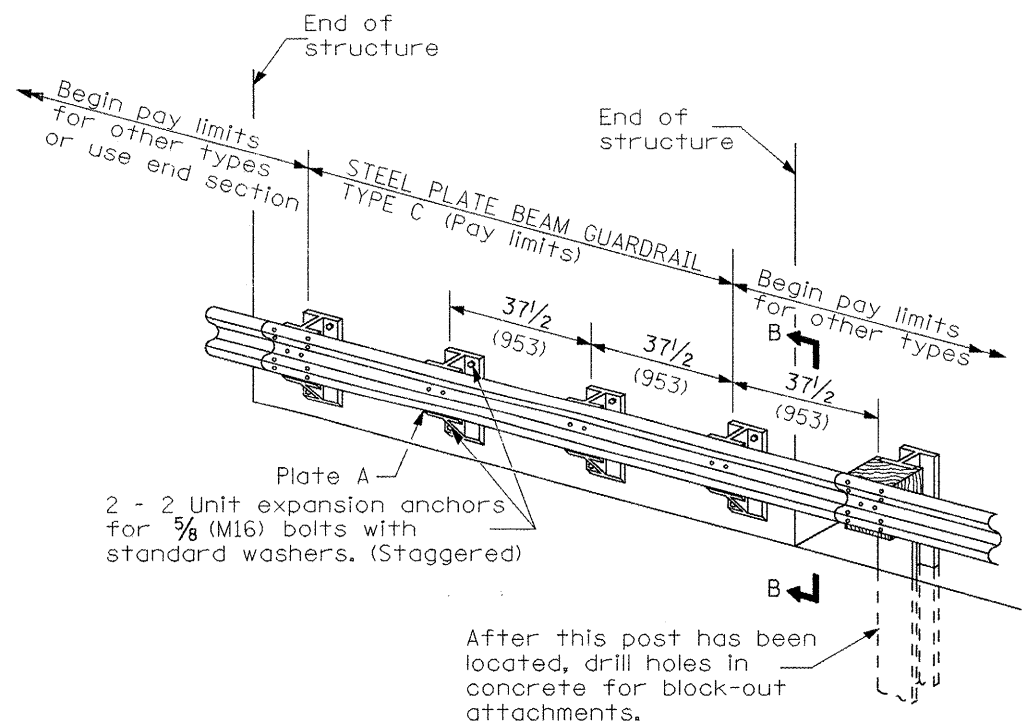
**TYPE B**  
37 1/2 (953) Closed post spacing



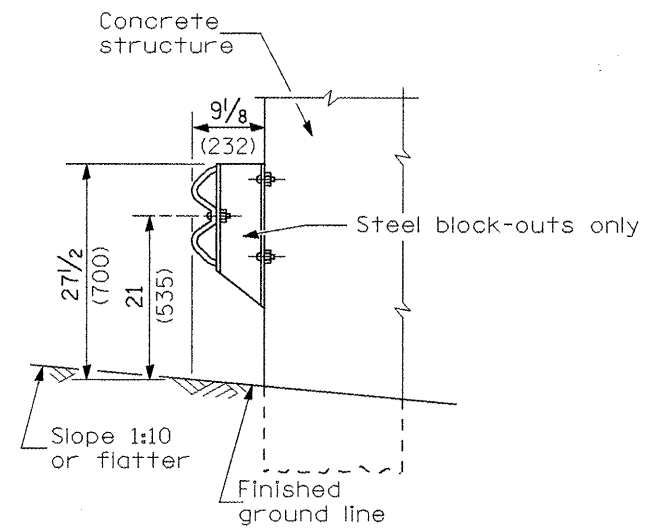
**SECTION C-C**



**TYPE D**  
Double steel plate beam guardrail  
6'-3" (1.905 m) typical post spacing



**TYPE C**  
37 1/2 (953) Block-out spacing



**SECTION B-B**

**GENERAL NOTES**

All slope ratios are expressed as units of vertical displacement to units of horizontal displacement (V:H).

All dimensions are in millimeters (inches) unless otherwise shown.

The existing steel posts may be drilled to match the bolt pattern shown herein for the wood block-out, or a new steel post shall be provided.

This detail is applicable to the guardrail system used prior to January 1, 2007. For details on the Midwest Guardrail System, see Standard 630001.

All dimensions are in inches (millimeters) unless otherwise noted.

03-01-07	NEW DETAIL	RJD
----------	------------	-----

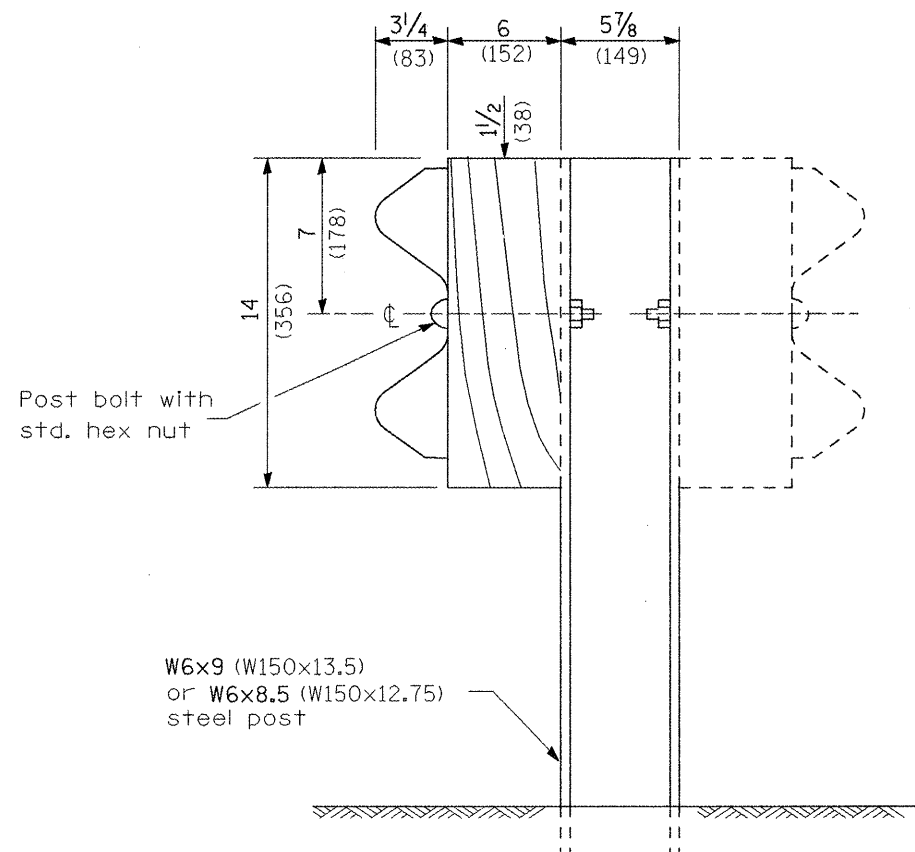
--	--	--	--	--

**STATE OF ILLINOIS**  
**DEPARTMENT OF TRANSPORTATION**

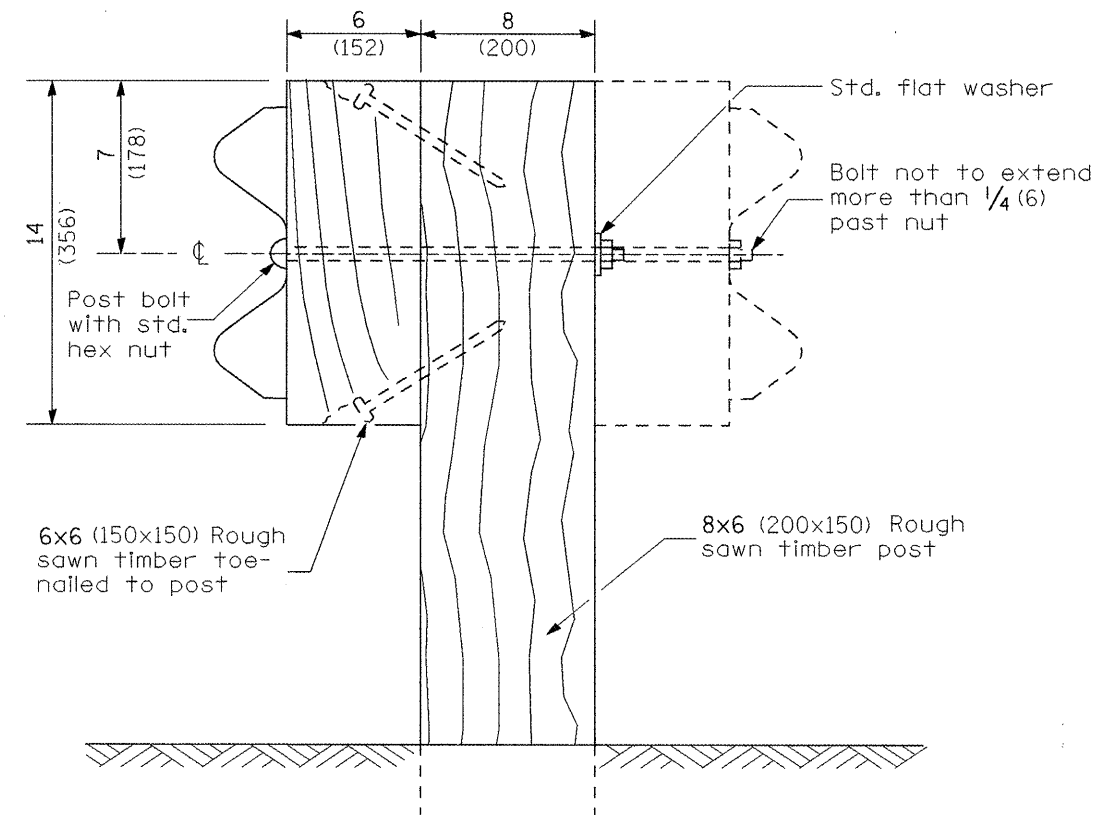
**GUARDRAIL SPECIAL DETAIL**  
(See Schedule of Quantities for Applicable H.W. Std or this Detail)

NOT TO SCALE

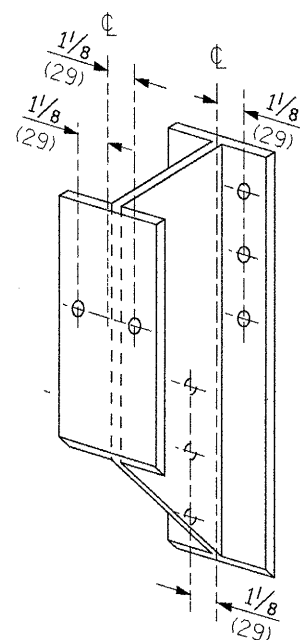
F.A.S. RTE.	SECTION	COUNTY	TOTAL SHEETS	SHEET NO.
2400	106RS-2; 107RS-4; 108RS-3	KNOX	29	18
FED. ROAD DIST. NO.			CONTRACT NO. 68472	



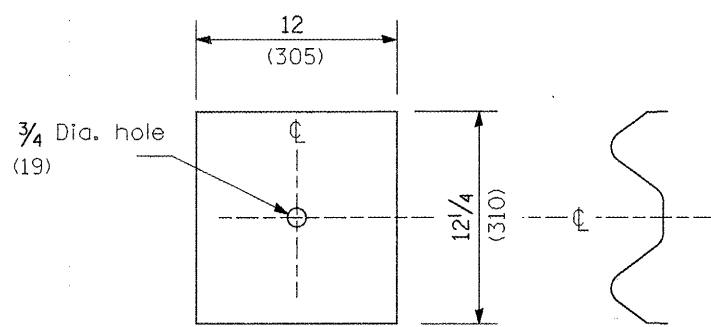
**STEEL POST CONSTRUCTION**



**WOOD POST CONSTRUCTION**



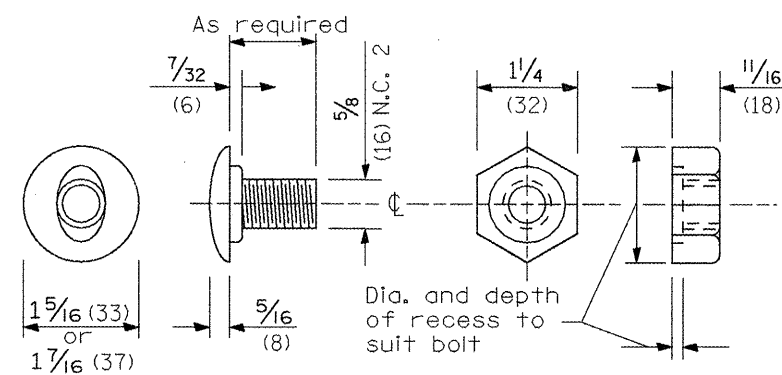
**STEEL BLOCK-OUT DETAIL**



**NOTE**

Plate A shall be placed between rail element and block-out at non-splice mounting points only when steel block-outs are used.

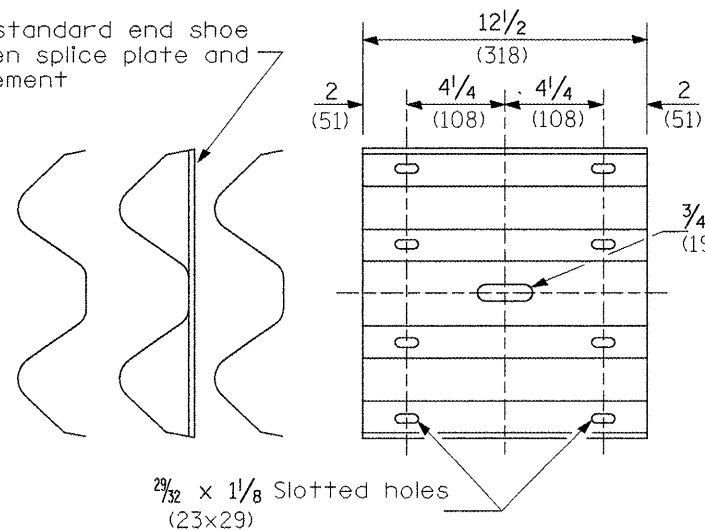
**PLATE A**



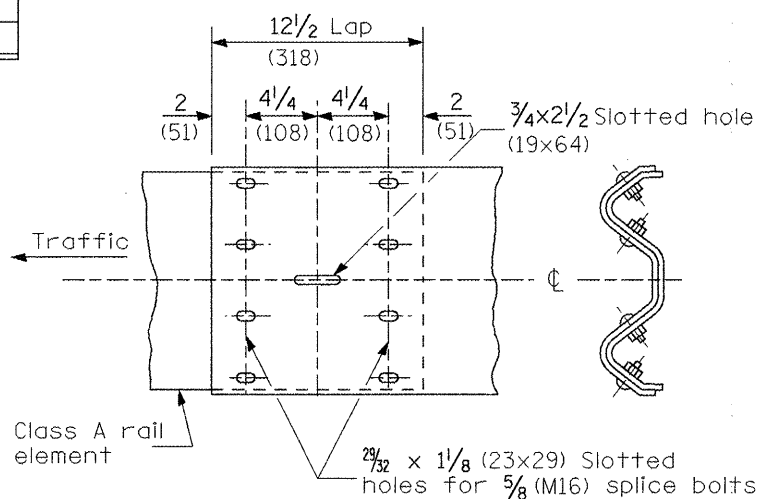
**POST OR SPLICE BOLT & NUT**

All dimensions are in inches (millimeters) unless otherwise noted.

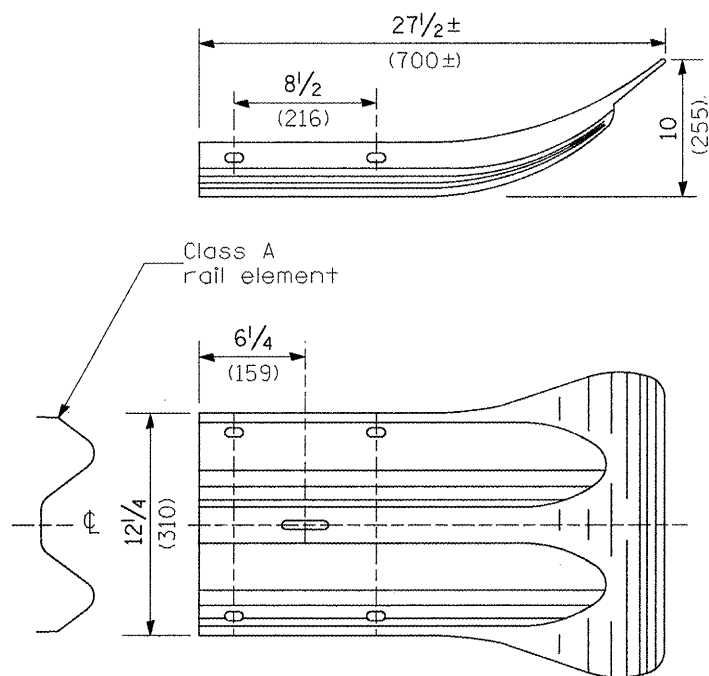
Place standard end shoe between splice plate and rail element



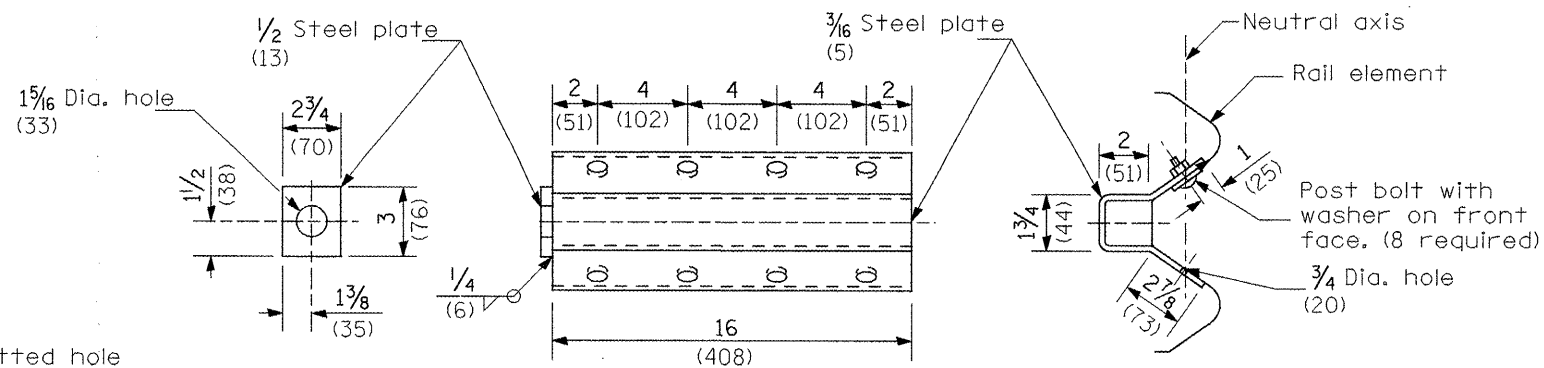
**SPLICE PLATE**



**RAIL ELEMENT SPLICE**



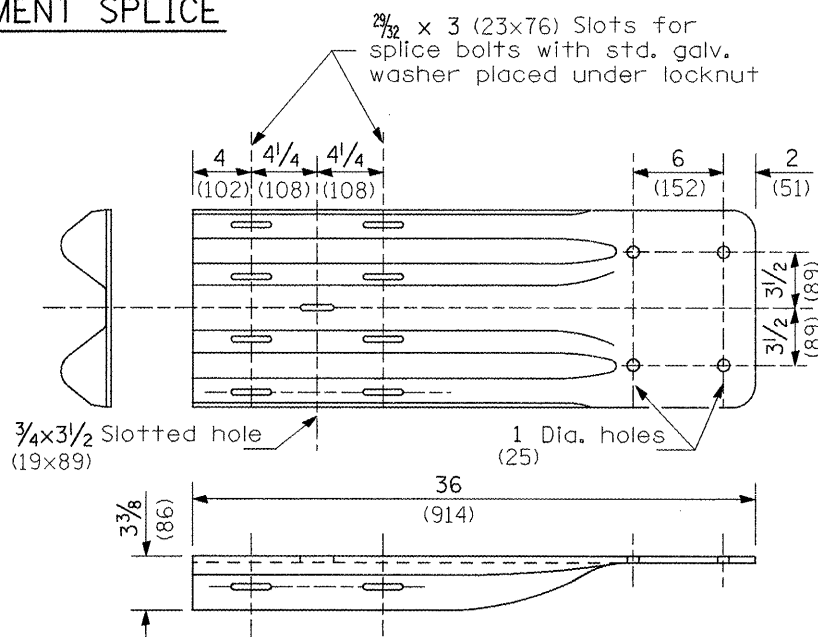
**END SECTION**



NOTE

Anchor plate T shall be used to attach cable assembly to guardrail when required on traffic barrier terminals.

**ANCHOR PLATE T DETAILS**



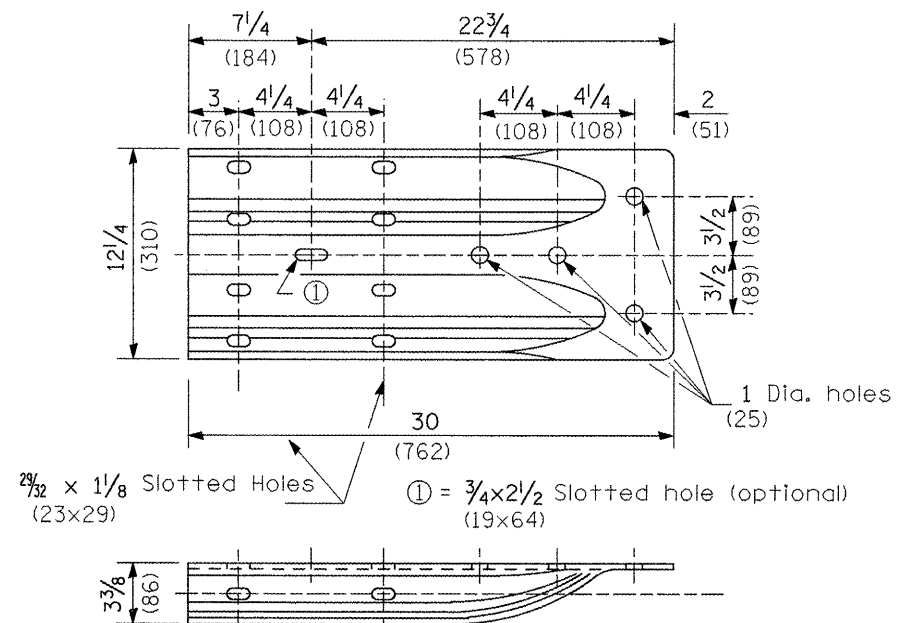
NOTE

When end shoe is attached to a bridge parapet which has an expansion joint, the bolts shall be provided with a locknut or double nut and shall be tightened only to a point that will allow guardrail movement.

The standard end shoe shall be attached to the concrete with pre-drilled or self-drilling anchor bolts. The anchor cone shall be set flush with the surface of the concrete.

Externally threaded studs protruding from the surface of the concrete will not be permitted.

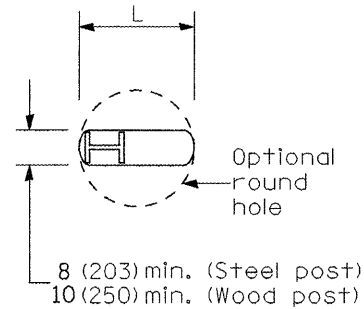
**END SHOE**



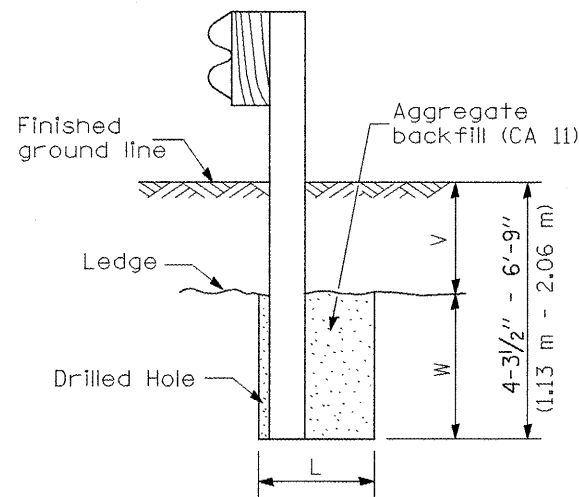
**ALTERNATE END SHOE**

All dimensions are in inches (millimeters) unless otherwise noted.





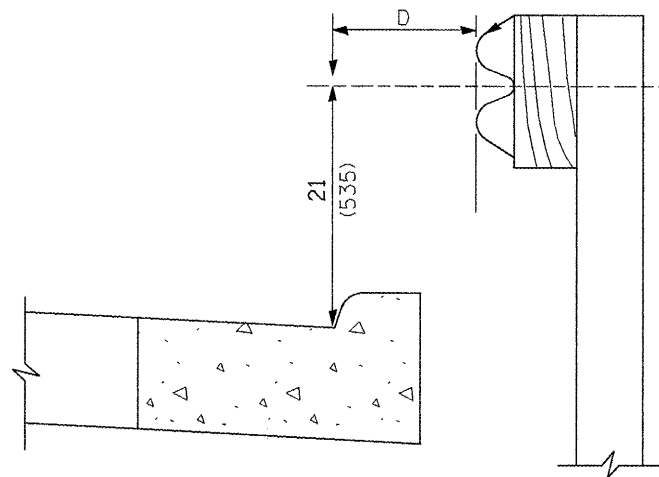
PLAN



Note:  
Ledge line is top of rock ledge or hard slag fill.

ELEVATION

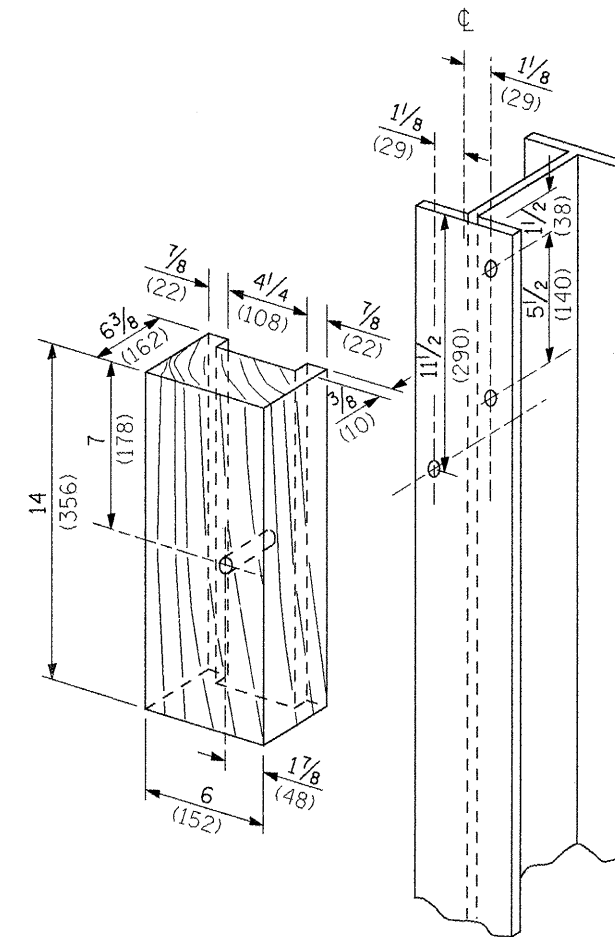
**FOOTING FOR POST WHEN IMPERVIOUS MATERIAL IS ENCOUNTERED**



Note:  
If it is necessary for D to be more than 12 (300) and less than 10'-0" (3.0 m) type M-2 (M-5) curb and gutter (Std. 606001) shall be used in front of and in advance of the guardrail.

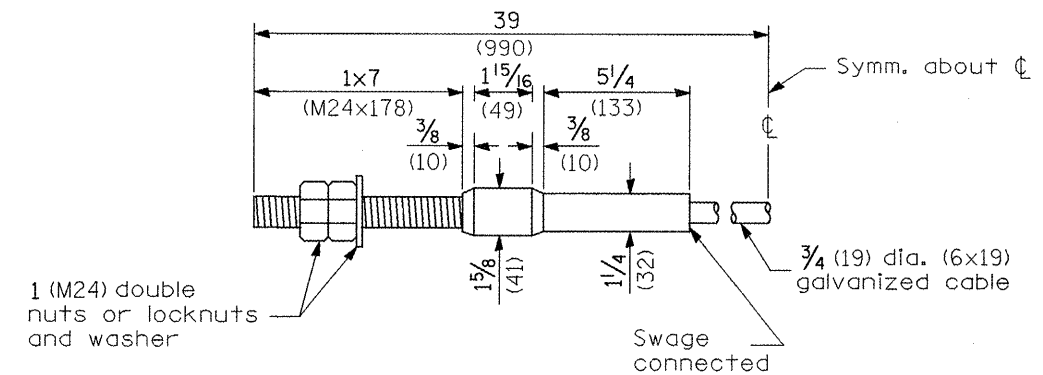
**GUARDRAIL PLACED BEHIND CURB**

(D = 0 desirable to 12 (300) maximum)



**WOOD BLOCK-OUT AND STEEL POST DETAILS**

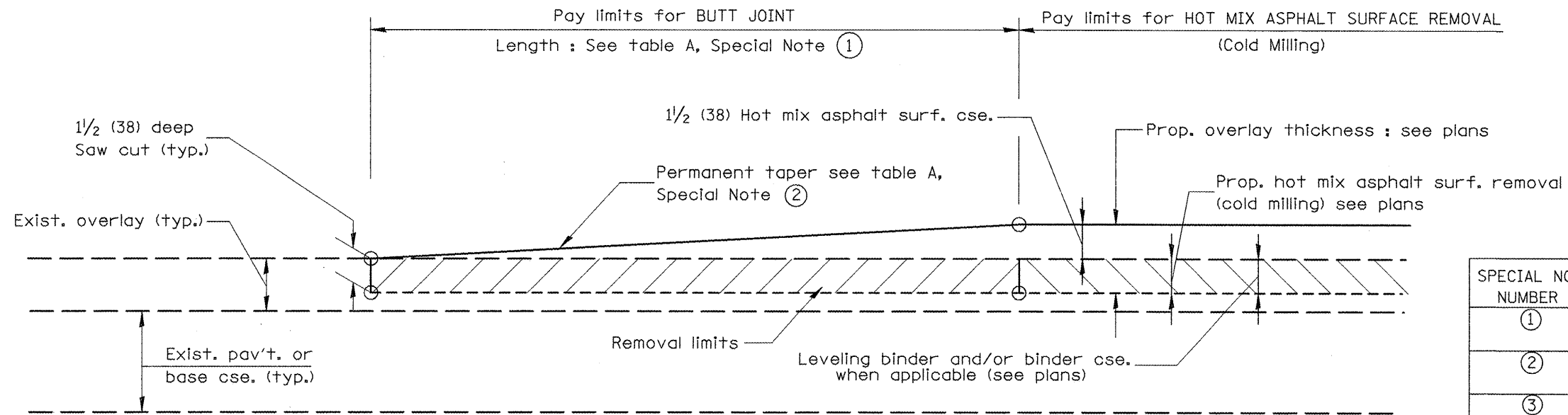
V	W	L	
		Steel Post	Wood Post
0 - 18 (0 - 460)	24 (610)	21 (530)	23 (580)
>18 - 41.5 (>460 - 825)	12 (305)	8 (203)	10 (250)
>41.5 - 53.5 (>825 - 1.13 m)	12 - 0 (305 - 0)	8 (203)	10 (250)



**CABLE ASSEMBLY**

(18,100 kg (40,000 lbs.) min. breaking strength)  
Tighten to taut tension.

All dimensions are in inches (millimeters) unless otherwise noted.



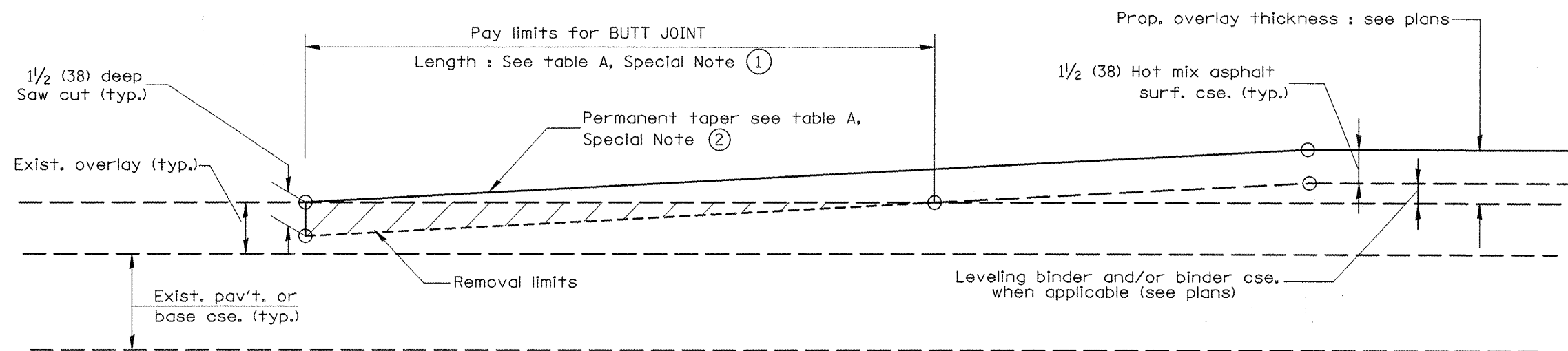
**CASE 1 : WITH HOT MIX ASPHALT SURFACE REMOVAL (COLD MILLING)**

**TABLE A**  
(LENGTHS AND TAPER RATES)

SPECIAL NOTE NUMBER	ELEMENT	MAINLINE INTERSTATES & 4-LANE EXPRESSWAYS	ALL OTHERS
①	LENGTH OF BUTT JOINT	60'(18.0 m)	30'(9.0 m)
②	PERMANENT TAPER RATE	1:480	1:240
③	TEMPORARY RAMP TAPER RATE	1:80	1:40
④	TEMPORARY RAMP LENGTH	10'(3.0 m)	5'(1.5 m)
⑤	LENGTH OF BUTT JOINT	10'(3.0 m)	10'(3.0 m)

**GENERAL NOTES**

1. The work shall be done in accordance with Article 406.08 and the Special Provision for Butt Joints.
2. The pavement surface to be removed may be either bituminous or P.C. concrete. The work shall be performed in accordance with Article 440.04 and the Special Provisions for Butt Joints.
3. The saw cut joints shall be primed just prior to the placing of bituminous material. The work will be in accordance with the applicable portions of Article 406.05.



**CASE 2 : NO HOT MIX ASPHALT SURFACE REMOVAL (COLD MILLING)**

All dimensions are in inches (millimeters) unless otherwise noted.

01-01-97	RENUM. C-23.01, NEW REVISION BOX	T.P.
04-01-97	CORRECTION TO DEPTH	J.A.
09-15-05	REVISED DESIGNER NOTE	M.M.A.
10-16-06	REVISED TO 2007 SPEC.	M.A.

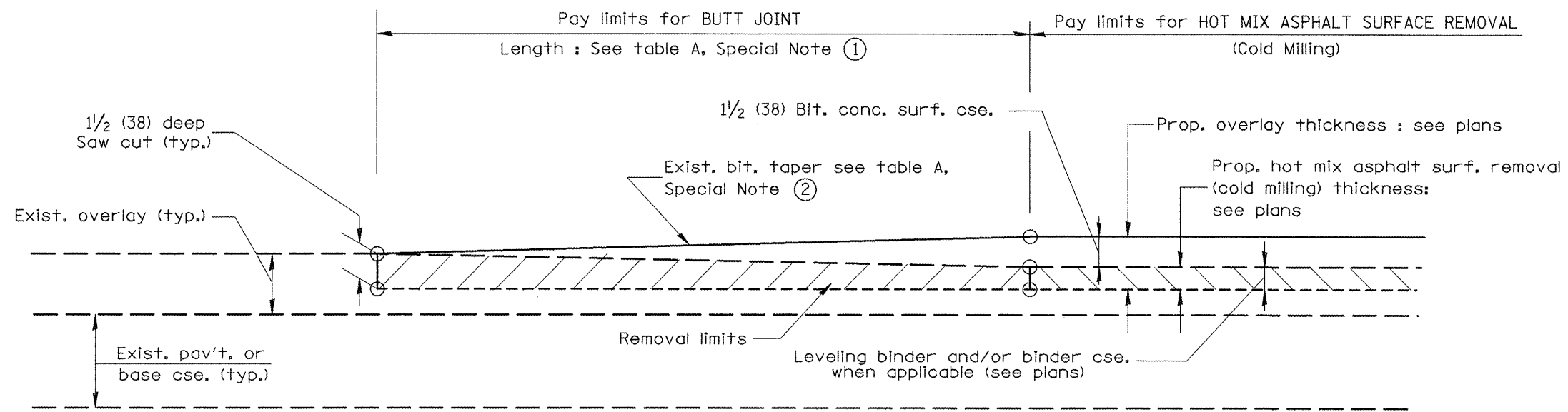
**STATE OF ILLINOIS**  
**DEPARTMENT OF TRANSPORTATION**

**BUTT JOINTS**

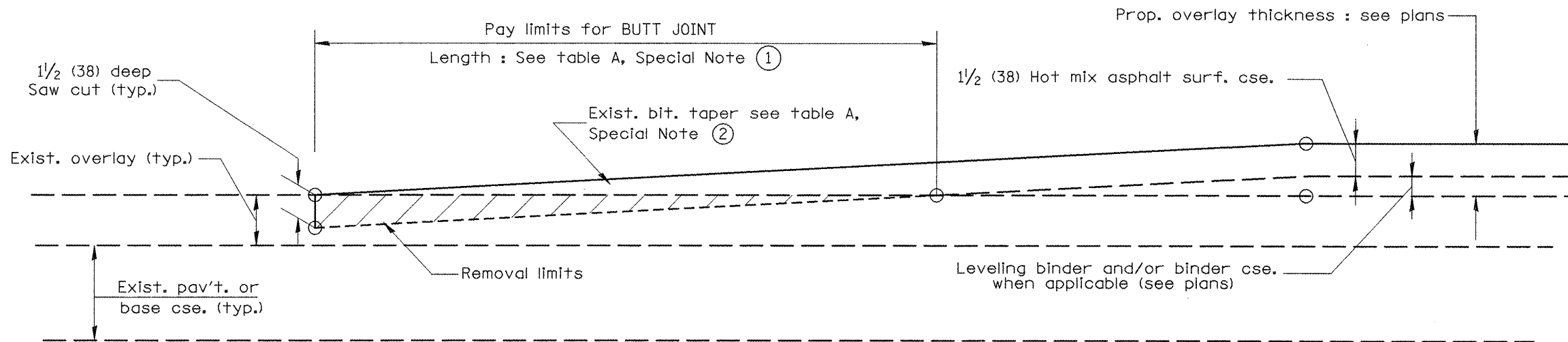
NOT TO SCALE

SHT. 1 OF 3  
CADD STD. 406101-D4

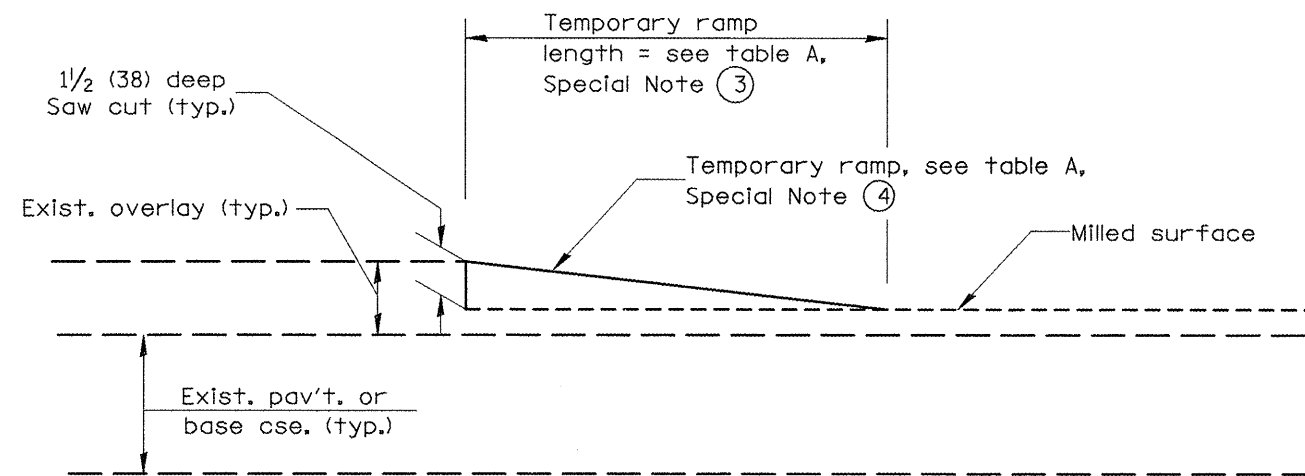
F.A.S. RTE.	SECTION	COUNTY	TOTAL SHEETS	SHEET NO.
2400	106RS-2; 107RS-4; 108RS-3	KNOX	29	22
FED. ROAD DIST. NO. ILLINOIS FED. AID PROJECT			CONTRACT NO. 68472	



**CASE 3 : WITH HOT MIX ASPHALT SURFACE REMOVAL (COLD MILLING)  
TIE-IN TO EXISTING BITUMINOUS TAPER**



**CASE 4 : NO HOT MIX ASPHALT SURFACE REMOVAL (COLD MILLING)  
TIE-IN TO EXISTING BITUMINOUS TAPER**



**DETAIL TEMPORARY RAMP**

All dimensions are in inches (millimeters) unless otherwise noted.

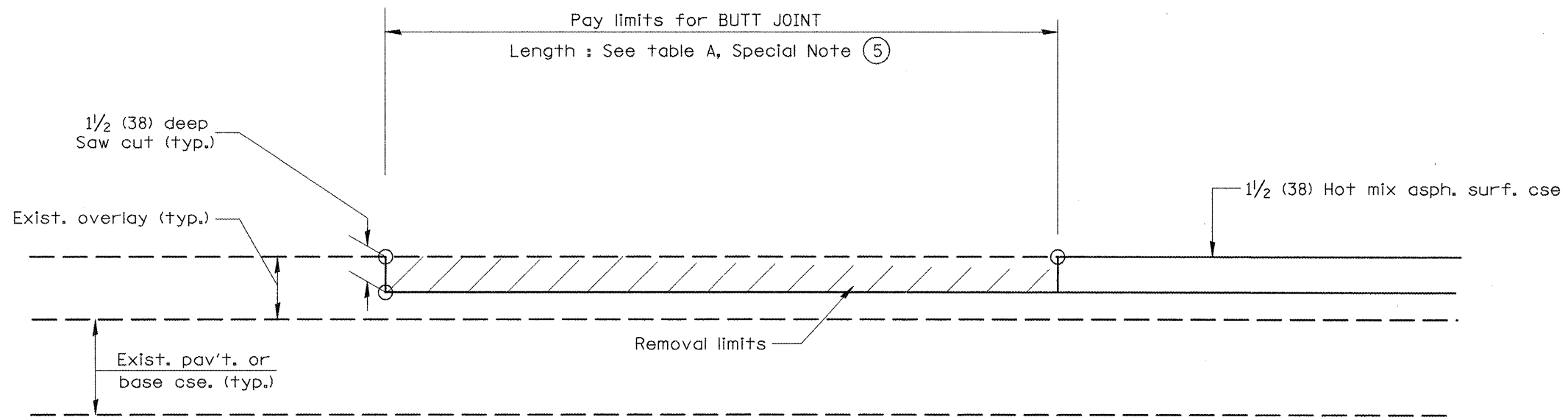
--	--	--	--	--	--	--	--	--	--

**STATE OF ILLINOIS  
DEPARTMENT OF TRANSPORTATION**

**BUTT JOINTS**  
NOT TO SCALE

F.A.S. RTE.	SECTION	COUNTY	TOTAL SHEETS	SHEET NO.
2400	106RS-2; 107RS-4; 108RS-3	KNOX	29	23
FED. ROAD DIST. NO. ILLINOIS FED. AID PROJECT			CONTRACT NO. 68472	

SHT. 2 OF 3  
CADD STD. 406101-D4



**CASE 5 : WITH HOT MIX ASPHALT SURFACE REMOVAL (COLD MILLING)  
TIE-IN TO EXISTING BITUMINOUS TAPER**

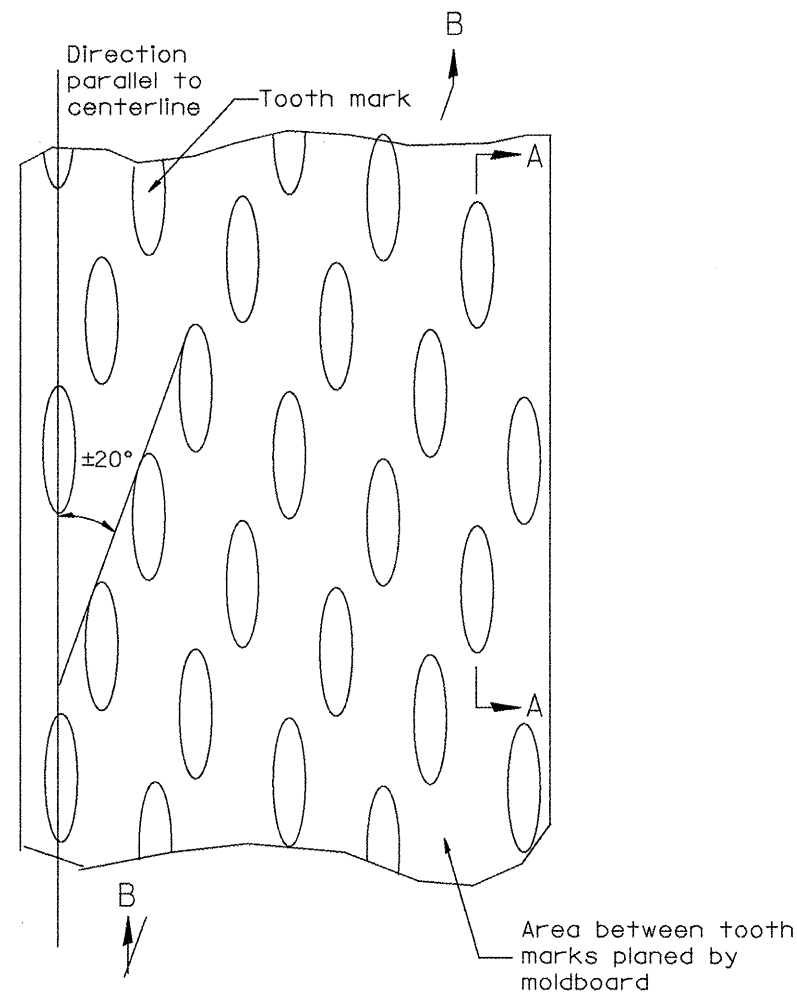
All dimensions are in inches (millimeters) unless otherwise noted.

--	--	--	--	--	--	--	--	--	--

**STATE OF ILLINOIS  
DEPARTMENT OF TRANSPORTATION**

**BUTT JOINTS**  
NOT TO SCALE  
SHT. 3 OF 3  
CADD STD. 406101-D4

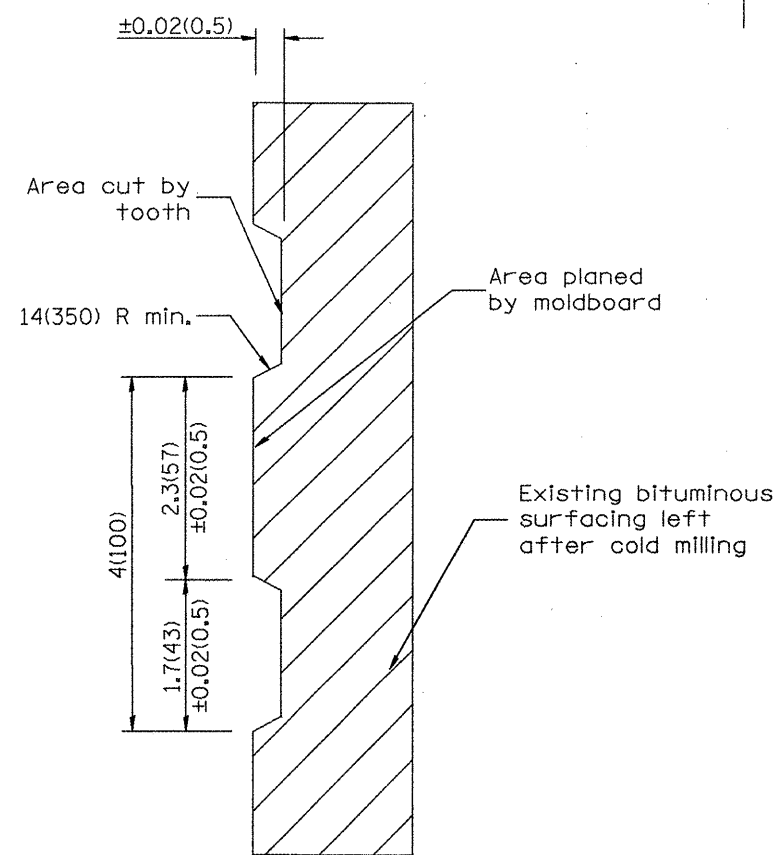
F.A.S. RTE.	SECTION	COUNTY	TOTAL SHEETS	SHEET NO.
2400	106RS-2; 107RS-4; 108RS-3	KNOX	29	24
FED. ROAD DIST. NO. ILLINOIS FED. AID PROJECT			CONTRACT NO. 68472	



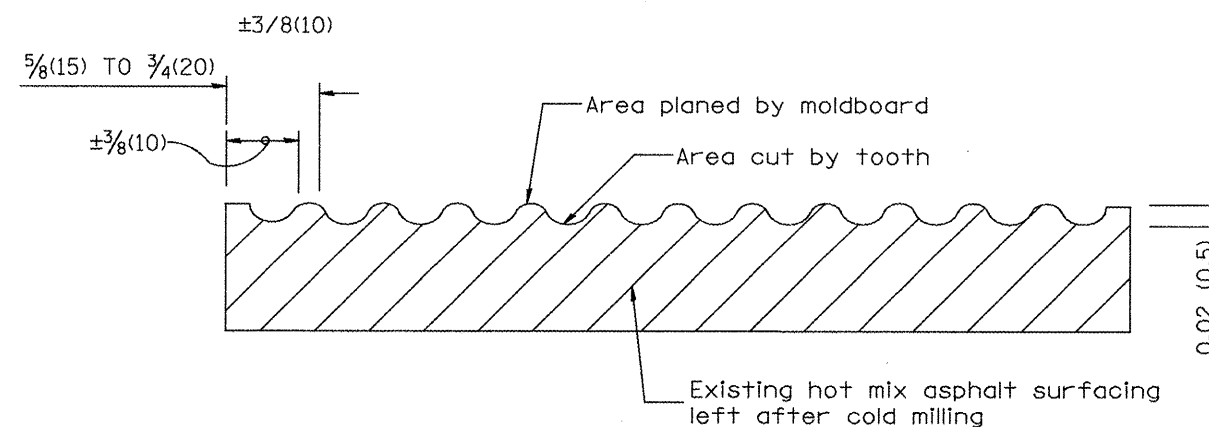
PLAN

General notes:

1. Coldmilling shall consist of two processes: Cutting with carbide teeth mounted on a rotating drum, and planing with a moldboard mounted immediately behind the cutting drum.
2. Other similar patterns will be acceptable if they consist of a smooth, flat, planed surface interspersed with a pattern of discontinuous longitudinal striations.



SECTION A-A



SECTION B-B PROJECTED  
PERPENDICULAR TO CENTERLINE

All dimensions are in inches (millimeters) unless otherwise noted.

01-01-97	RENUM. C-104.01, NEW REVISION BOX	T.P.
04-20-98	REMOVED MILLING DETAIL FROM STANDARD	J.A.
09-08-98	CORRECT NOTE LEADER PLACEMENT	R.W.
10-16-06	REVISED TO 2007 SPEC.	M.A.

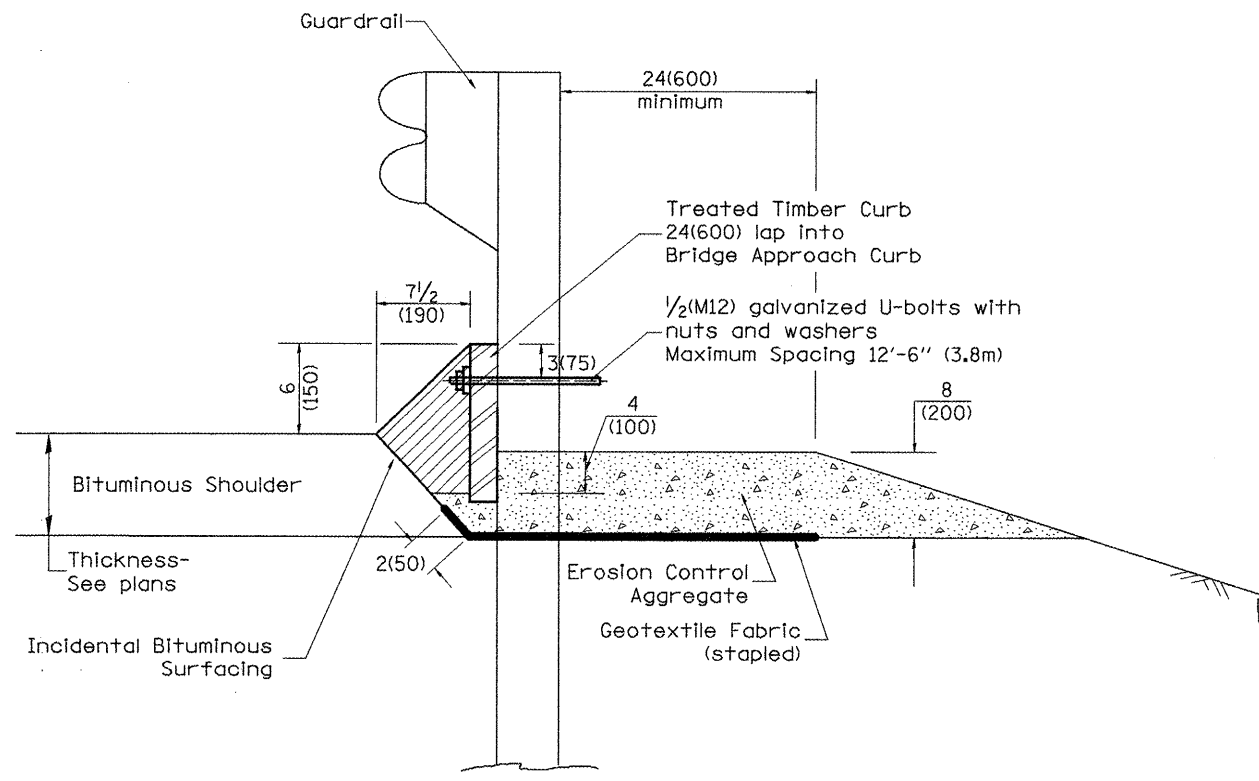
STATE OF ILLINOIS  
DEPARTMENT OF TRANSPORTATION

HOT MIX ASPHALT SURFACE REMOVAL (COLD MILLING)

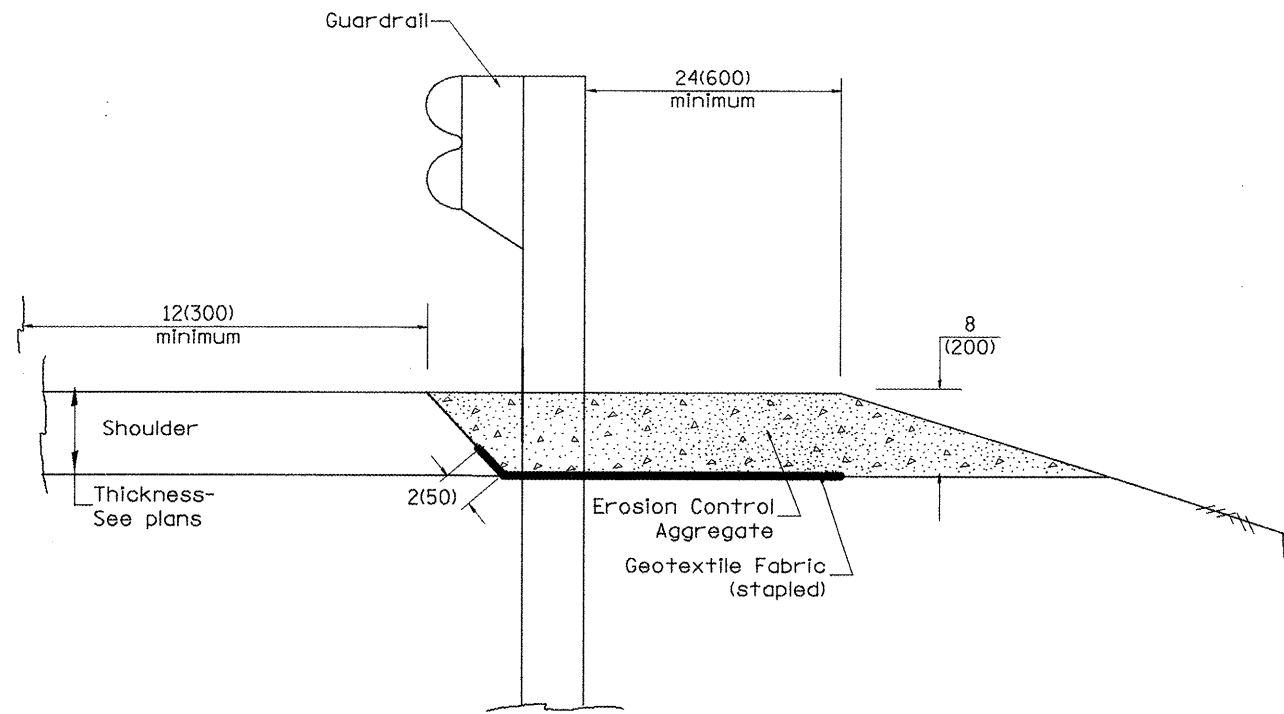
NOT TO SCALE

CADD STD. 440001-D4

F.A.S. RTE.	SECTION	COUNTY	TOTAL SHEETS	SHEET NO.
2400	106RS-2; 107RS-4; 108RS-3	KNOX	29	25
FED. ROAD DIST. NO.			ILLINOIS FED. AID PROJECT	
			CONTRACT NO. 68472	



**TYPICAL SECTION WITH EROSION CONTROL CURB**



**TYPICAL SECTION WITHOUT EROSION CONTROL CURB**

**GENERAL NOTES: EROSION CONTROL CURB**

1. This work shall consist of grading as needed, installing hardware and treated timber boards, furnishing and placing mastic material and incidental bituminous surfacing in front of Steel Plate Beam Guardrail in accordance with Plan Details.
2. Timber shall be treated in accordance with Article 1007.12. All preservatives specified in the article will be allowed. Waterborne preservatives "asa" and "cca" shall have a minimum retention of 0.40 lbs./cu. ft. (6.4 kg/m<sup>3</sup>)

**GENERAL NOTES: GUARDRAIL AGGREGATE EROSION CONTROL**

1. This work shall consist of grading as needed, furnishing and installing geotextile fabric and staples, and furnishing, placing and shaping crushed aggregate around and behind Steel Plate Beam Guardrail posts in accordance with Plan Details.
2. Before placing the aggregate and the Geotextile Fabric, weeds and grass shall be removed from the area to be covered.
3. After the area has been prepared, and in a dry condition, the Geotextile fabric shall be placed with a 12(300) minimum overlap. A knife cut for guardrail post installation is necessary.
4. The aggregate shall be deposited, compacted and shaped by either mechanical or hand methods, in a manner reasonably true to line and grade.
5. The Contractor shall have the option of placing the guardrail before or after the Geotextile Fabric and Aggregate are in place. If the guardrail is placed after the Geotextile Fabric and Aggregate, then any voids must be filled and the aggregate returned to line and grade.
6. Materials shall meet the following requirements:
  - A. The crushed aggregate shall be CA1 gradation in accordance with Article 1004.01(c) of the Standard Specifications.
  - B. The Geotextile Fabric shall be nonwoven fabric in accordance with Article 1080.02 of the Standard Specifications.

All dimensions are in inches (millimeters) unless otherwise noted.

01-01-97	RENUM. C-22.01, NEW REVISION BOX	T.P.			
03-01-97	CORRECT STD. NUMBERS IN NOTES PG. 2	J.A.			
11-03-00	CORRECTION TO NOTES	M.A.			
10-16-06	REVISED TO 2007 SPEC.	M.A.			

**STATE OF ILLINOIS  
DEPARTMENT OF TRANSPORTATION**

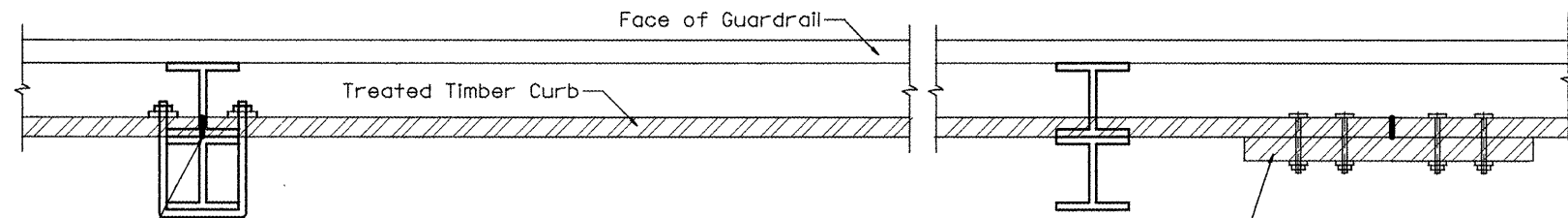
**GUARDRAIL EROSION CONTROL TREATMENTS**

NOT TO SCALE

SHT. 1 OF 2  
CADD STD. 630101-04

F.A.S. RTE.	SECTION	COUNTY	TOTAL SHEETS	SHEET NO.
2400	106RS-2; 107RS-4; 108RS-3	KNOX	29	26
FED. ROAD DIST. NO. ILLINOIS FED. AID PROJECT			CONTRACT NO. 68472	

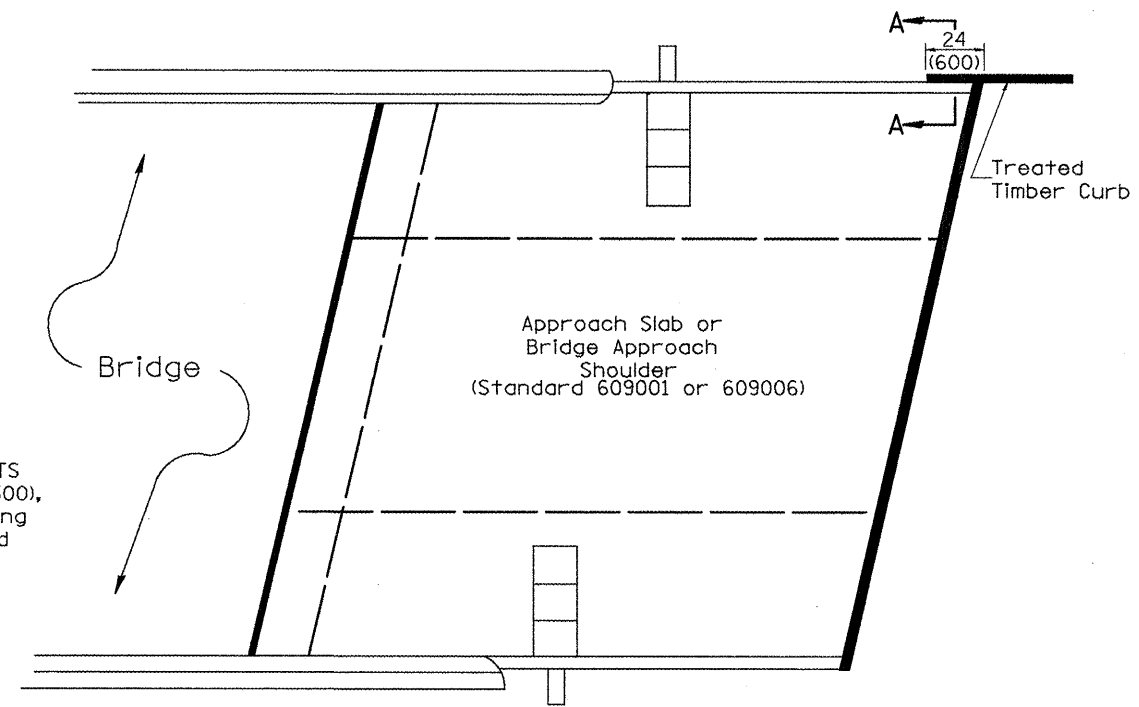




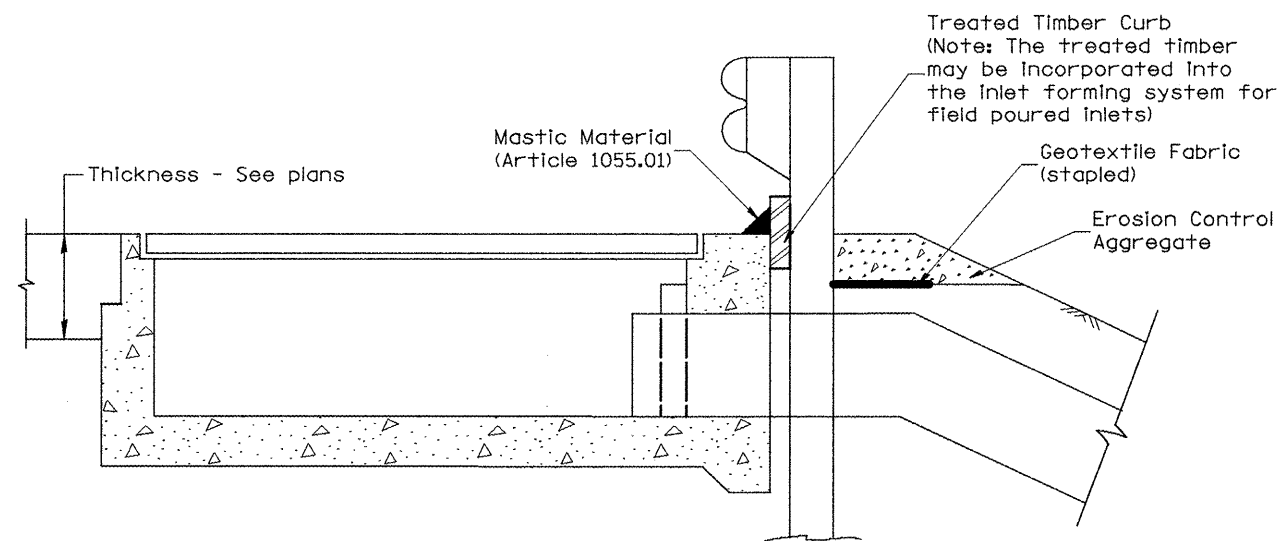
SPLICE LOCATED AT GUARDRAIL POST  
1/2(M12) galvanized U-bolt with  
nut & washer

SPLICE LOCATED BETWEEN GUARDRAIL POSTS  
treated timber splice plate 2x12 (50x300),  
actual size 1 1/2x1 1/2 (40x290), 24(600) long  
with 8 evenly spaced 1/2(M12) galvanized  
bolts with nuts & washers.

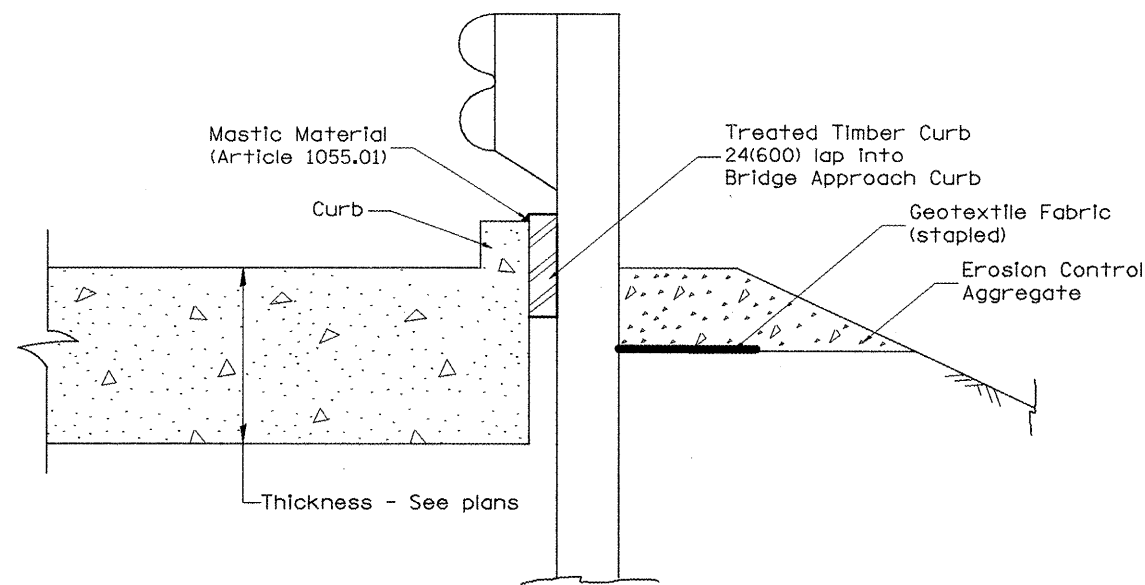
**DETAIL A**  
(Typical Treated Timber Splices)



**PLAN VIEW**  
**APPROACH SLAB OR BRIDGE APPROACH SHOULDER**  
(STANDARD 609001 or 609006)



**TYPICAL SECTION WITH EROSION CONTROL CURB**  
**AT INLETS TYPE E & F (STANDARD 610001)**



**SECTION A-A**  
**TYPICAL SECTION WITH EROSION CONTROL CURB**  
**AT BRIDGE APPROACH CURB**  
(STANDARD 609001 OR 609006)

All dimensions are in inches (millimeters)  
unless otherwise noted.

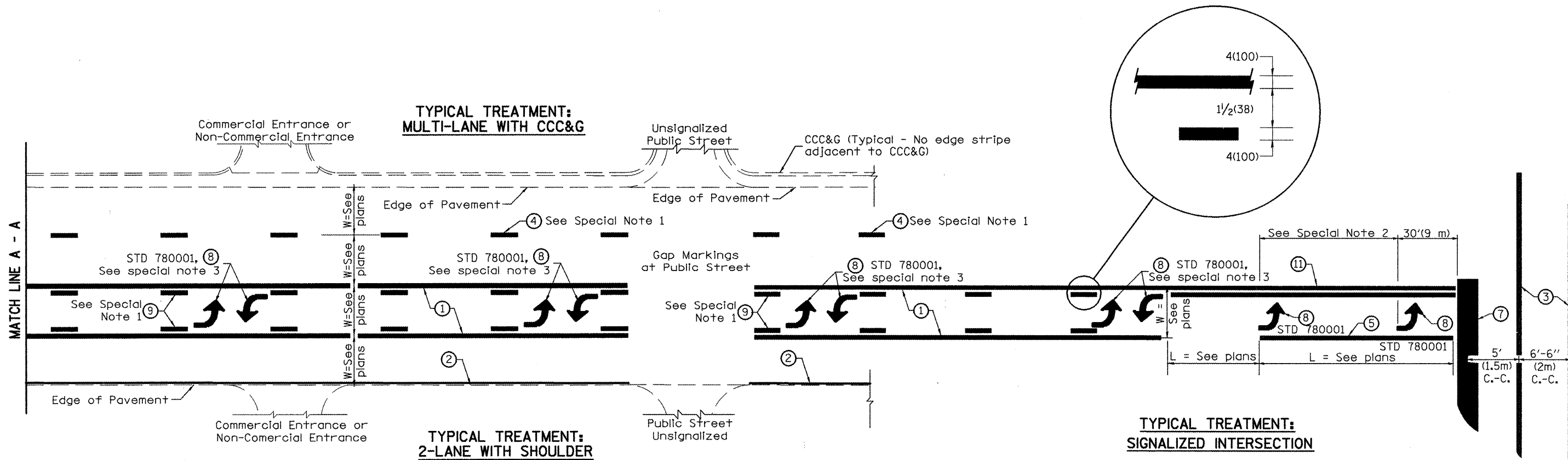
STATE OF ILLINOIS  
DEPARTMENT OF TRANSPORTATION

GUARDRAIL EROSION CONTROL TREATMENTS

NOT TO SCALE

SHT. 2 OF 2  
CADD STD. 630101-D4

F.A.S. RTE.	SECTION	COUNTY	TOTAL SHEETS	SHEET NO.
2400	106RS-2; 107RS-4; 108RS-3	KNOX	29	27
FED. ROAD DIST. NO. ILLINOIS FED. AID PROJECT			CONTRACT NO. 68472	



**FLUSH PAVED MEDIAN: TWO-WAY LEFT TURN LANE  
WITH ONE-WAY LEFT TURN LANE AT SIGNALIZED INTERSECTION**

**TYPICAL PAVEMENT MARKING LEGEND**

(Note: This is a District Standard Legend. Some elements may not apply to specific project.)

- ① 4(100) Solid (Yellow)
- ② 4(100) Solid (White)
- ③ 2-6(150) Crosswalk @ 6'-6" (2m)min C.-C. (White)  
2-8(200) Crosswalk @ 6'-6" (2m)min C.-C. (White) (When traffic signals are present.)
- ④ 6(150) Skip-Dash (White) (See Special Note 1)
- ⑤ 8(200) Solid (White)
- ⑥ 12(300) Diagonal (White) (Item ⑥ is shown on Std. 780001)
- ⑦ 24(600) Stop Bar (White)
- ⑧ Letters & Arrows (See Std. 780001 and Special Notes 2 & 3)
- ⑨ 4(100) Skip-Dash (Yellow) (See Special Note 1)
- ⑩ 12(300) Diagonal (Yellow) (See Table A) (See Table A)
- ⑪ 4(100) Double Solid (Yellow) (See Table A)

**SPECIAL NOTES**

1. Skip-Dash markings will be centered between both ends of city blocks and shall be placed in alignment transversely across the pavement.
2. The following shall apply to arrows located in one-way left turn lanes:
  - A. A minimum of two (2) arrows is required.
  - B. The maximum spacing between arrows is 80' (24 m).
  - C. Arrows shall be evenly spaced if three (3) or more are required.
3. The following shall apply to arrow pairs located in two-way left turn lanes:
  - A. A minimum of two (2) arrow pairs is required.
  - B. The maximum spacing between arrow pairs is 200' (61 m).
  - C. Arrow pairs shall be evenly spaced if three (3) or more are required.
  - D. The spacing between Bi Directional Left Turn Arrows is 33' (10 m).

**GENERAL NOTES**

1. Refer to State Standard 780001 for additional Pavement Markings including letters & arrows.
2. See Plans for Pavement Markings adjacent to curbed islands and medians, and through lane reductions.

01-01-97	RENUM. F-8.03, NEW REVISION BOX	T.P.	10-16-06	REVISED TO 2007 SPEC.
02-07-97	ADD BI DIRECTIONAL DIMENSION	J.A.		
10-97	CORRECT BI DIRECTIONAL DIMENSION	J.A.		
08-02	ADD CROSSWALK DMNS. WITH T.S.	M.A.		

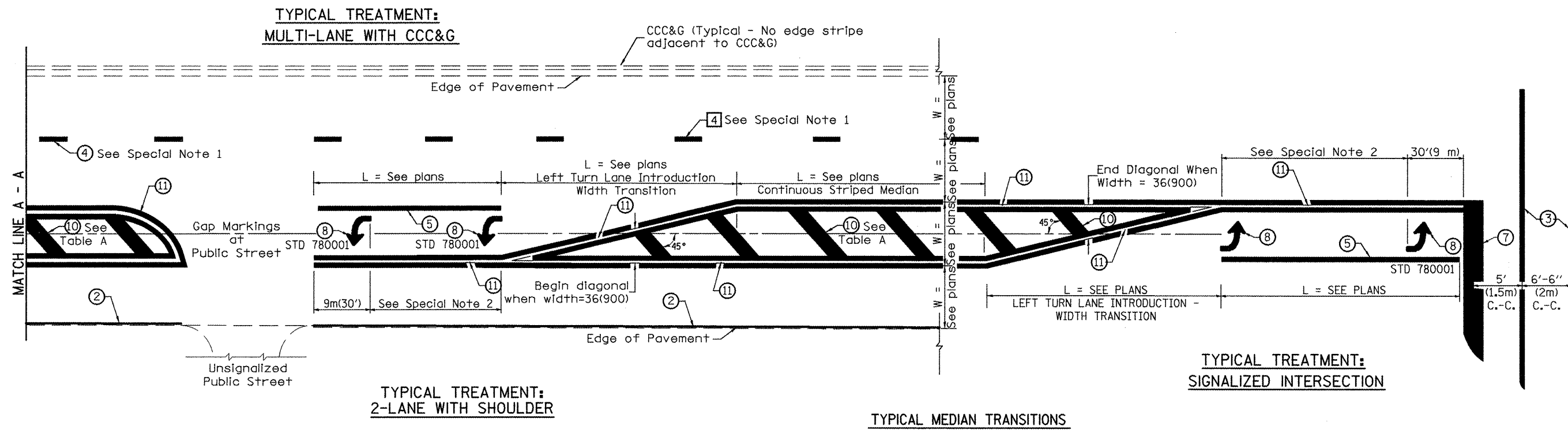
**STATE OF ILLINOIS  
DEPARTMENT OF TRANSPORTATION**

**TYPICAL PAVEMENT MARKINGS**

NOT TO SCALE

F.A.S. RTE.	SECTION	COUNTY	TOTAL SHEETS	SHEET NO.
2400	106RS-2; 107RS-4; 108RS-3	KNOX	29	28
CONTRACT NO. 68472				
FED. ROAD DIST. NO.		ILLINOIS FED. AID PROJECT		

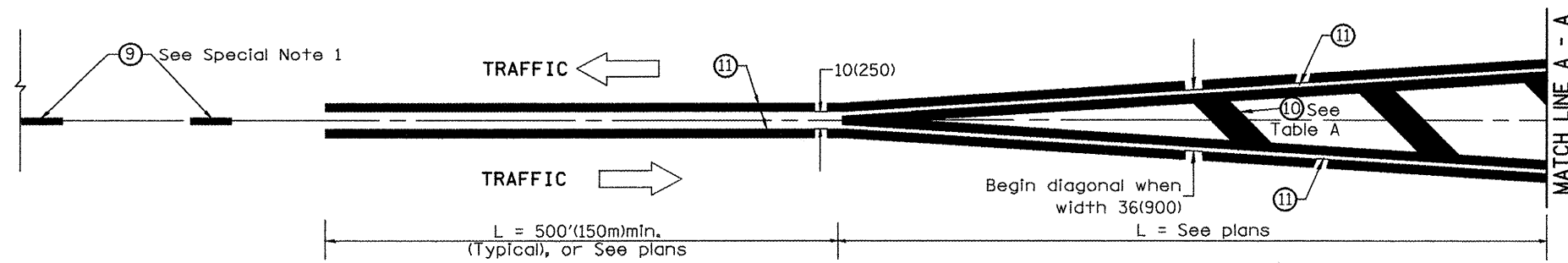
SHT. 1 OF 2  
CADD STD. 780001-D4



FLUSH PAVED MEDIAN: RESTRICTED LEFT TURN LANE

**TABLE A**  
RECOMMENDED SPACING BETWEEN DIAGONAL LINES

SPEED LIMIT RANGE	INTERSECTION CHANNELIZATION (Includes Width Transitions for Median and Left Turn Lane Introductions)	
	CONTINUOUS	
Less Than 30 mph (50 km/h)	50' (15m)	15' (5m)
30 - 45 mph (50 - 70 km/h)	75' (23m)	20' (6m)
Over 45 mph (70 km/h)	150' (46m)	30' (9m)



MEDIAN INTRODUCTION - WIDTH TRANSITIONS

All dimensions are in inches (millimeters) unless otherwise noted.

STATE OF ILLINOIS  
DEPARTMENT OF TRANSPORTATION

TYPICAL PAVEMENT MARKINGS

NOT TO SCALE

SHT. 2 OF 2  
CADD STD. 780001-D4

F.A.S. RTE.	SECTION	COUNTY	TOTAL SHEETS	SHEET NO.
2400	106RS-2; 107RS-4; 108RS-3	KNOX	29	29
CONTRACT NO. 68472				
FED. ROAD DIST. NO.		ILLINOIS FED. AID PROJECT		