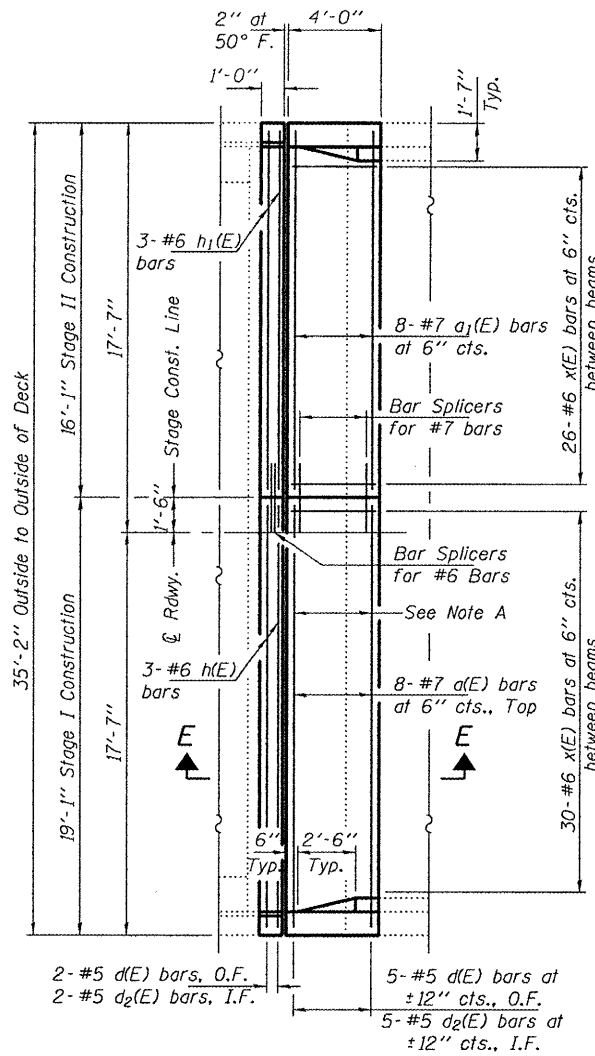
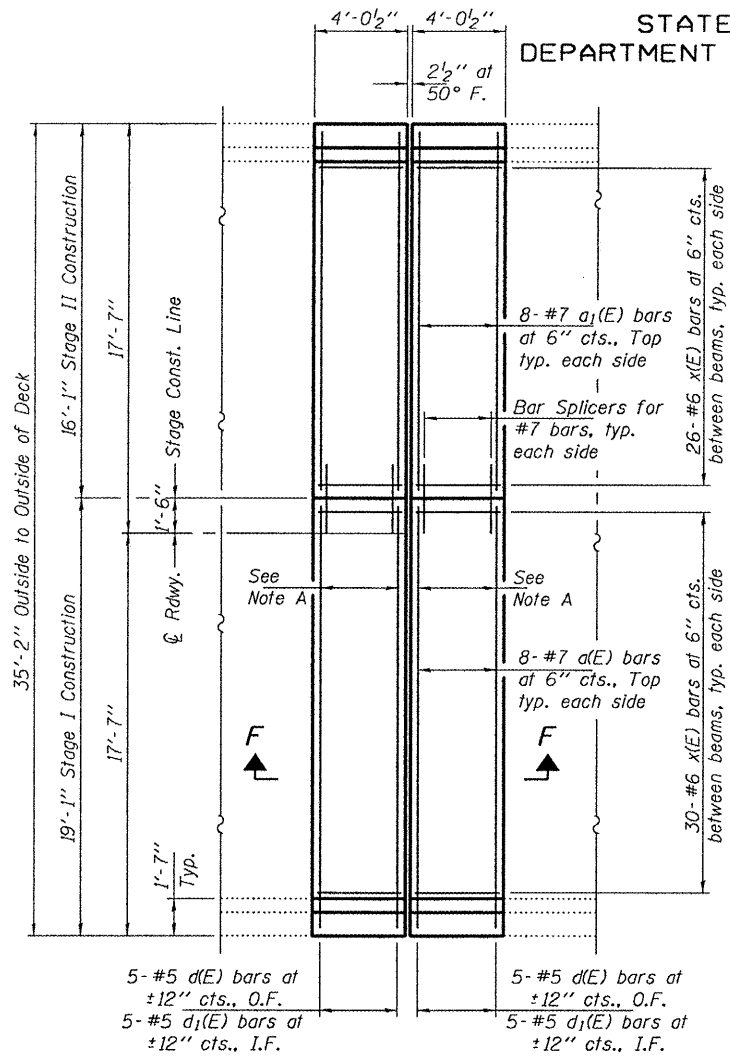


STATE OF ILLINOIS
DEPARTMENT OF TRANSPORTATION

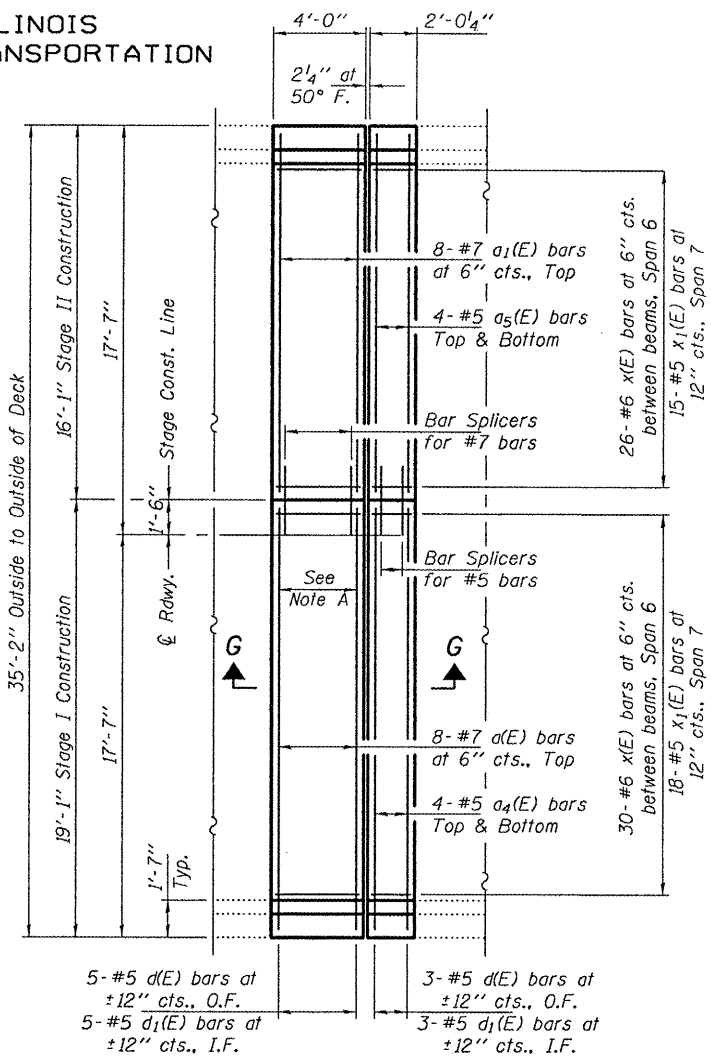


CONCRETE PLAN
AT NORTH ABUTMENT

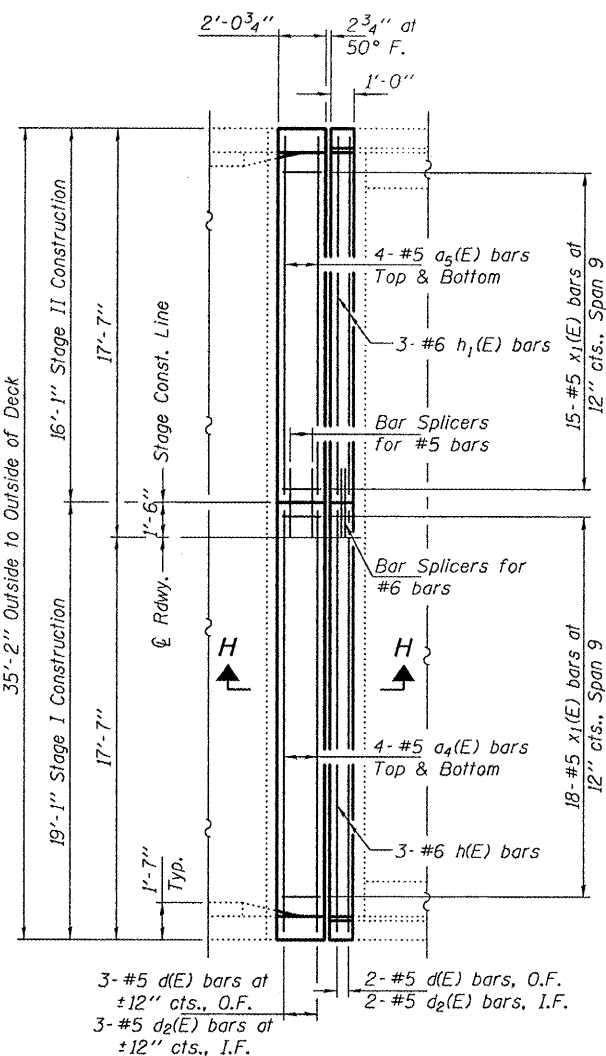


CONCRETE PLAN
AT PIER 3

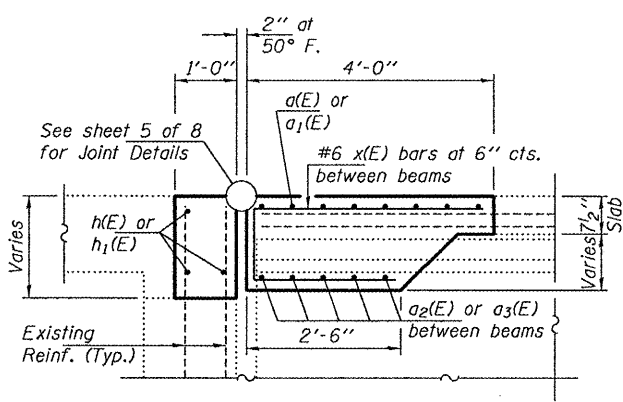
Note A:
5-#6 a₂(E) or a₃(E) bars between beams. Use Mechanical Splicers for #6 bars at Stage Const. Line. See "Typical Cross Section Thru PPC I-Beam Spans" on sheet 4 of 8.



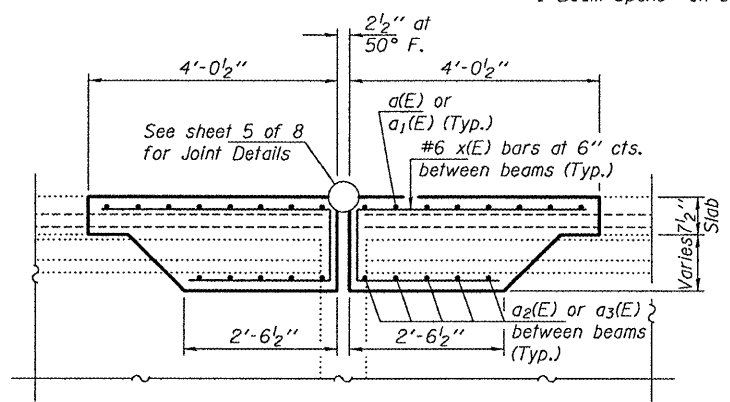
CONCRETE PLAN
AT PIER 6



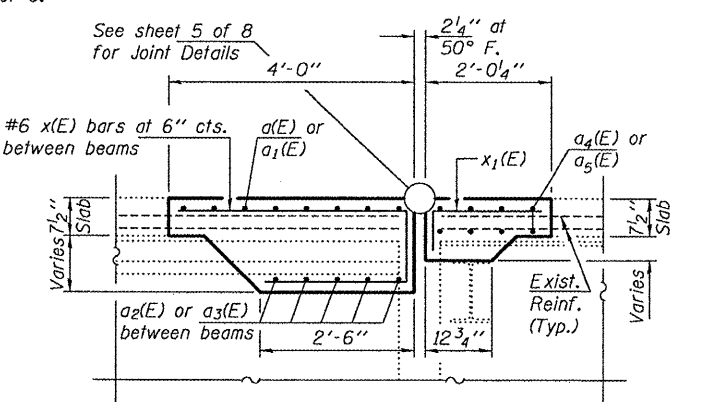
CONCRETE PLAN
AT SOUTH ABUTMENT



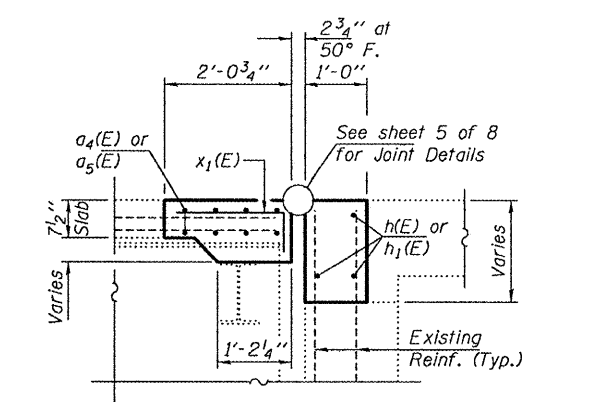
SECTION E-E



SECTION F-F



SECTION G-G



SECTION H-H

SUPERSTRUCTURE DETAILS
IL ROUTE 116 OVER SPOON RIVER
SN 029-0050

DESIGNED	GGE	EXAMINED	<i>Carl Proyer</i> ENGINEER OF STRUCTURAL SERVICES
CHECKED	IJL	PASSED	<i>Ralph E. Anderson</i> ENGINEER OF BRIDGES AND STRUCTURES
DRAWN	Kyle M. Steffen		
CHECKED	GGE IJL		

JANUARY 12, 2010

SHEET NO. 3 8 SHEETS	F.A.P. RTE.	SECTION	COUNTY	TOTAL SHEETS	SHEET NO.
	665	(142-BR)I	FULTON	25	11
CONTRACT NO. 68925					
FED. ROAD DIST. NO. ILLINOIS FED. AID PROJECT					