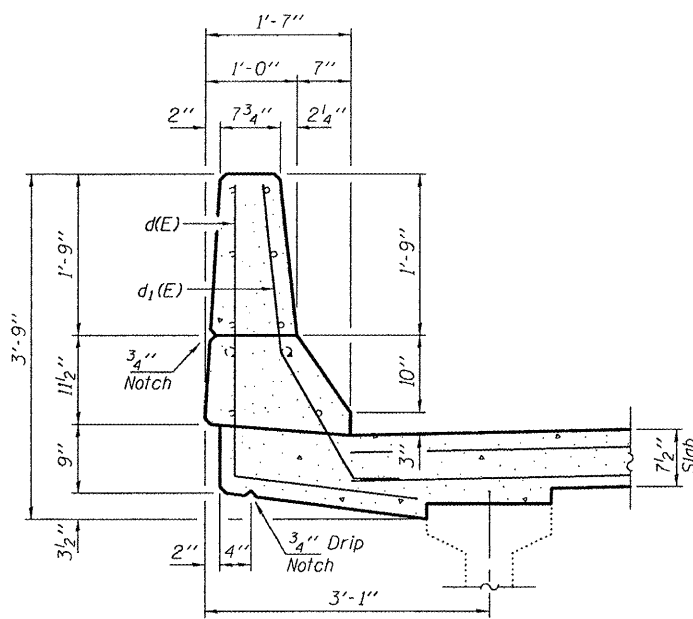


STATE OF ILLINOIS
DEPARTMENT OF TRANSPORTATION

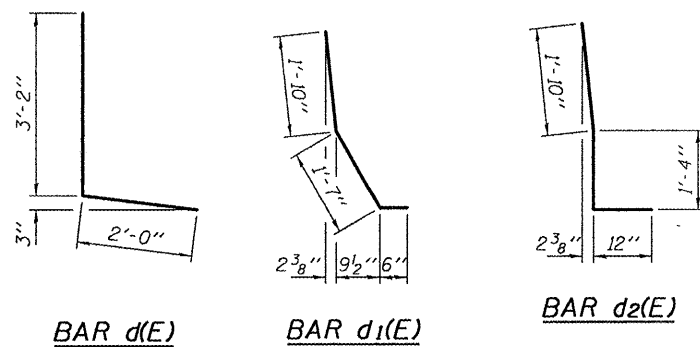


SECTION THRU PARAPET

PPC I-Beam Span shown
Steel Girder Span similar

* Attach to existing reinforcement with mechanical splicers. Existing reinforcement to extend 6" into the removal area to allow attachment of the mechanical splicers.

** 2-#6 x(E) bars at ±6" cts.



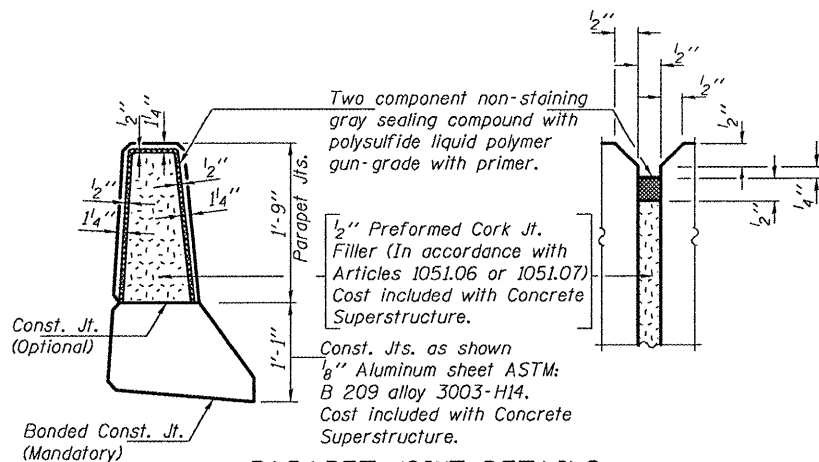
BAR d(E)

BAR d1(E)

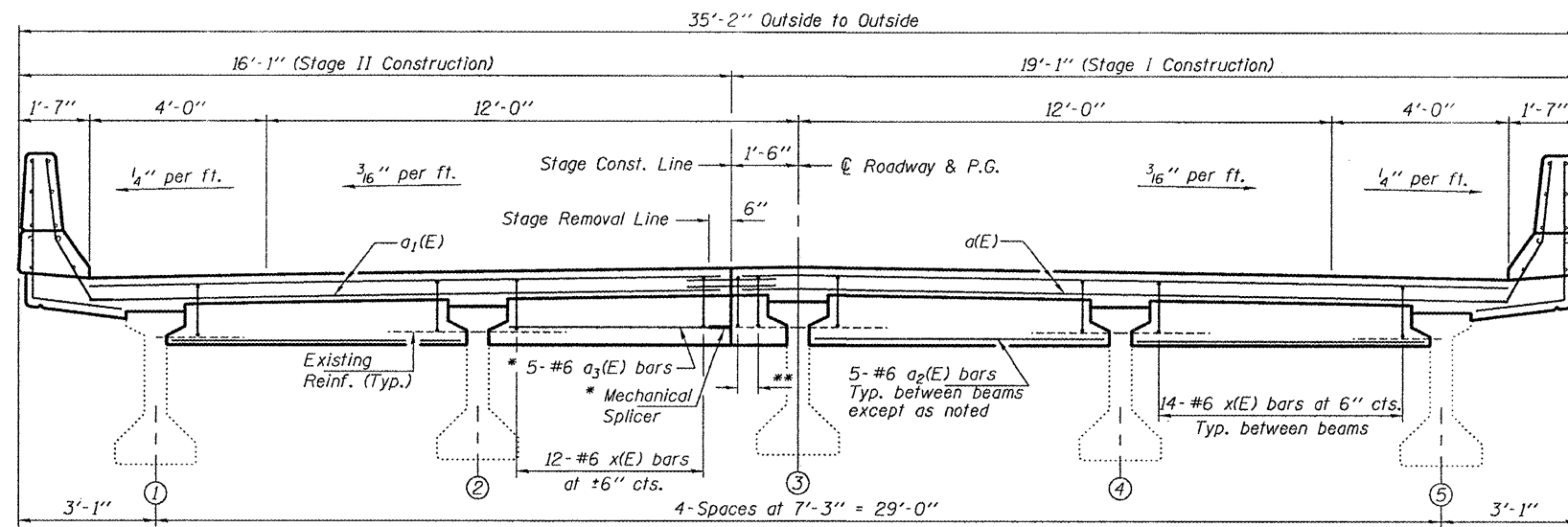
BAR d2(E)

BAR x(E)

BAR x1(E)

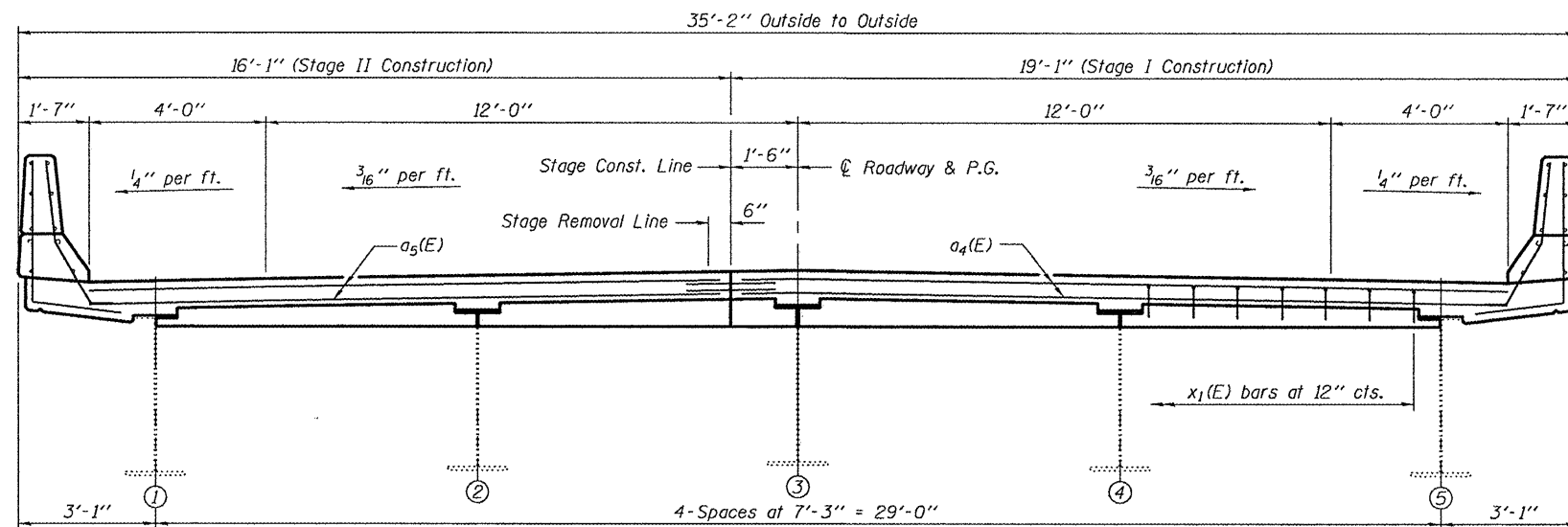


PARAPET JOINT DETAILS



TYPICAL CROSS SECTION THRU PPC I-BEAM SPANS

Looking South



TYPICAL CROSS SECTION THRU STEEL GIRDER SPANS

Looking South

BILL OF MATERIAL

Bar	No.	Size	Length	Shape
a(E)	32	#7	18'-6"	—
a1(E)	32	#7	15'-6"	—
a2(E)	60	#6	6'-6"	—
a3(E)	20	#6	5'-4"	—
a4(E)	8	#5	18'-9"	—
a5(E)	8	#5	15'-9"	—
d(E)	30	#5	5'-2"	┘
d1(E)	18	#5	3'-11"	┘
d2(E)	12	#5	4'-2"	┘
h(E)	6	#6	18'-9"	—
h1(E)	6	#6	15'-9"	—
x(E)	224	#6	7'-1"	┘
x1(E)	46	#5	2'-5"	┘
Concrete Removal		Cu. Yd.	42.6	
Concrete Superstructure		Cu. Yd.	43.0	
Reinforcement Bars, Epoxy Coated		Pound	6640	

**SUPERSTRUCTURE DETAILS
IL ROUTE 116 OVER SPOON RIVER
SN 029-0050**

DESIGNED	GGE
CHECKED	IJL
DRAWN	Kyle M. Steffen
CHECKED	GGE IJL

JANUARY 12, 2010
EXAMINED *Carl Proyer*
ENGINEER OF STRUCTURAL SERVICES
PASSED *Ralph E. Anderson*
ENGINEER OF BRIDGES AND STRUCTURES

SHEET NO. 4 8 SHEETS	F.A.P. RTE. NO.	SECTION	COUNTY	TOTAL SHEETS	SHEET NO.
	665	(142-BR)I	FULTON	25	12
FED. ROAD DIST. NO.			ILLINOIS FED. AID PROJECT		
CONTRACT NO. 68925					