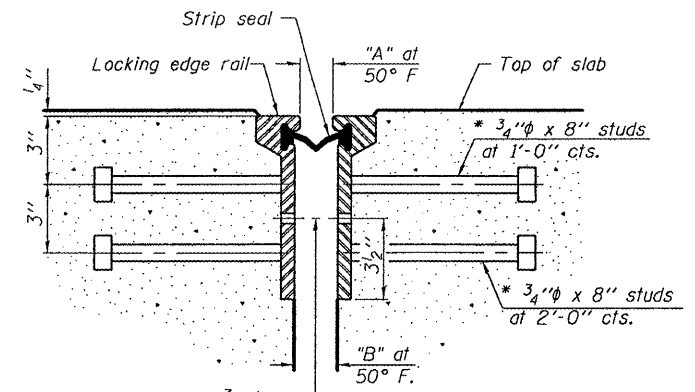
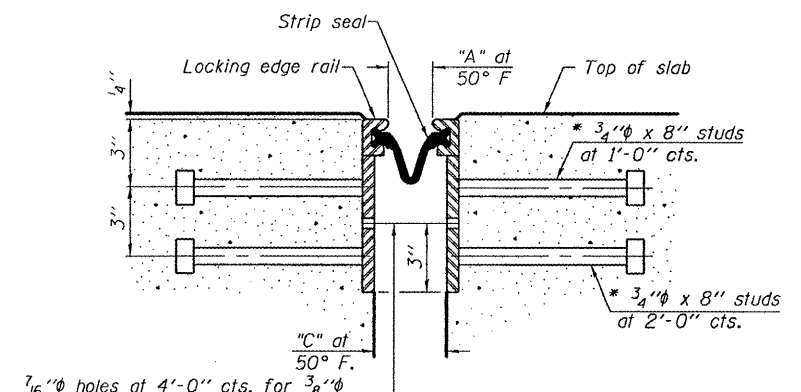


* Granular or solid flux filled headed studs conforming to Article 1006.32 of the Std. Specs., automatically end welded.

STATE OF ILLINOIS
DEPARTMENT OF TRANSPORTATION



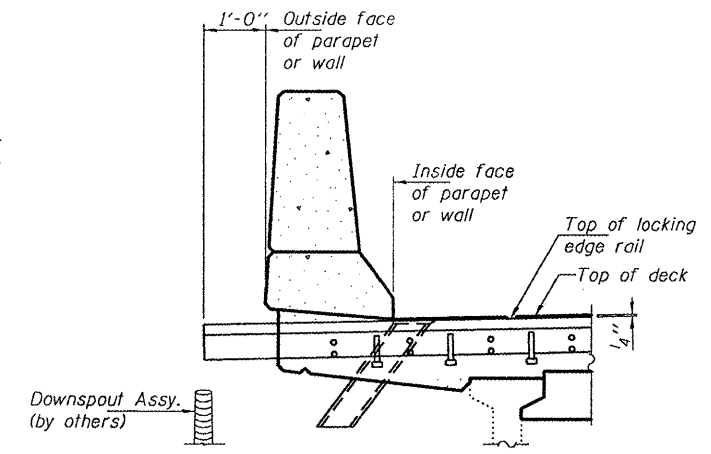
SECTION THRU
ROLLED RAIL JOINT



SECTION THRU
WELDED RAIL JOINT

TABLE OF JOINT OPENINGS

LOCATION	"A"	"B"	"C"
N. Abut.	1 1/2"	2"	2 3/4"
Pier 3	2"	2 1/2"	3 1/4"
Pier 6	1 3/4"	2 1/2"	3"
S. Abut.	2 1/4"	2 3/4"	3 1/2"



END TREATMENT AT
CURB, PARAPET OR WALL

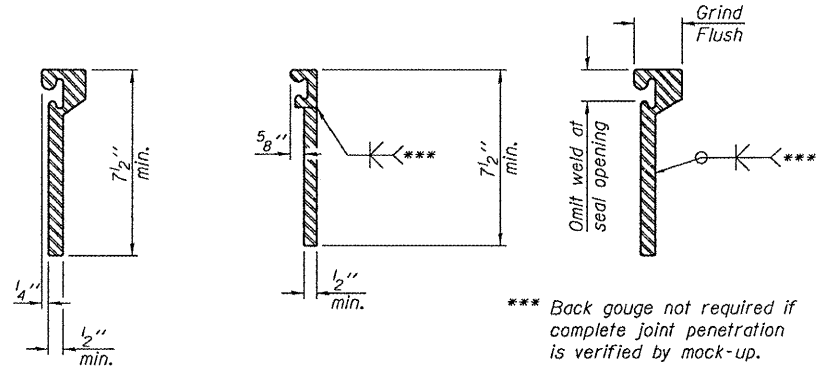
See Section A-A for end treatment of skews > 30°.

7/16" φ holes at 4'-0" cts. for 3/8" φ bolts. All bolts shall be burned, sawed, or chipped off flush with the plates after forms are removed, typ.

7/16" φ holes at 4'-0" cts. for 3/8" φ bolts. All bolts shall be burned, sawed, or chipped off flush with the plates after forms are removed, typ.

Notes:

The strip seal shall be made continuous and shall have a minimum thickness of 1/4". The configuration of the strip seal shall match the configuration of the Locking Edge Rails. Open or "webbed" strip seal gland configurations are not permitted. The gland shall be sized for a maximum rated movement of 4 inches. The Locking Edge Rails depicted are conceptual only, except for the minimum dimensions shown. The actual configuration of the Locking Edge Rails and matching strip seal may vary from manufacturer to manufacturer. Flanged edge rails will not be allowed. Locking Edge Rails may be spliced at slope discontinuities. The manufacturer's recommended installation methods shall be followed. The joint opening and deck dimensions detailed on the superstructure are based on a rolled rail expansion joint. If the Contractor elects to use the welded rail expansion joint, the opening and deck dimensions shall be modified according to the dimensions detailed on this sheet. Required modifications shall be made at no additional cost to the State. All steel components shall be galvanized after fabrication according to Article 520.03 of the Standard Specifications. Maximum space between rail segments at stage lines shall be 3/16", sealed with a suitable sealant.

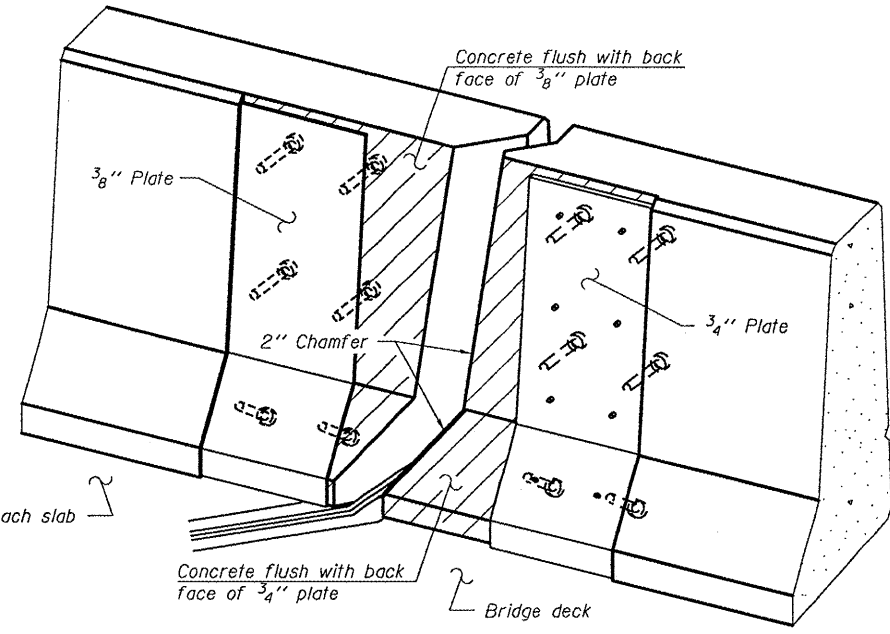


ROLLED
EXTRUDED RAIL

WELDED RAIL

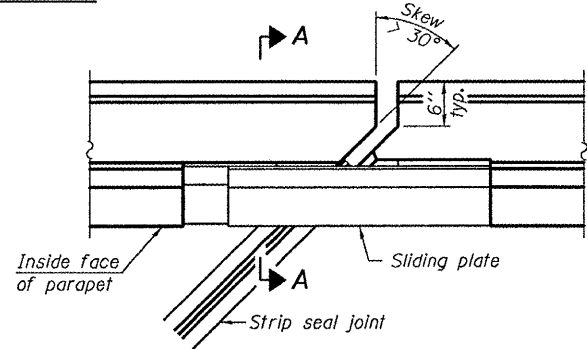
LOCKING EDGE
RAIL SPLICE

The inside of the locking edge rail groove shall be free of weld residue. Rolled rail shown, welded rail similar.

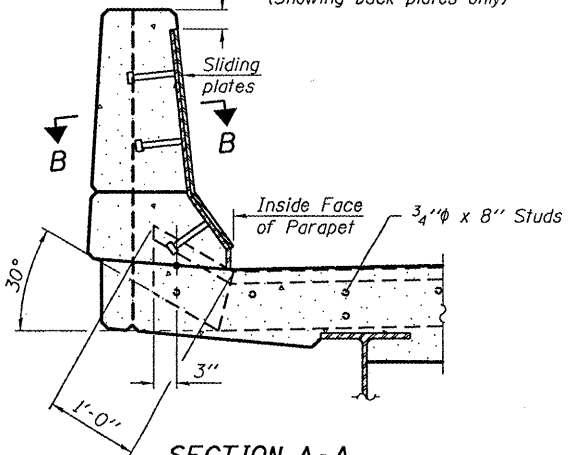


TRIMETRIC VIEW
(Showing back plates only)

LOCKING EDGE RAILS

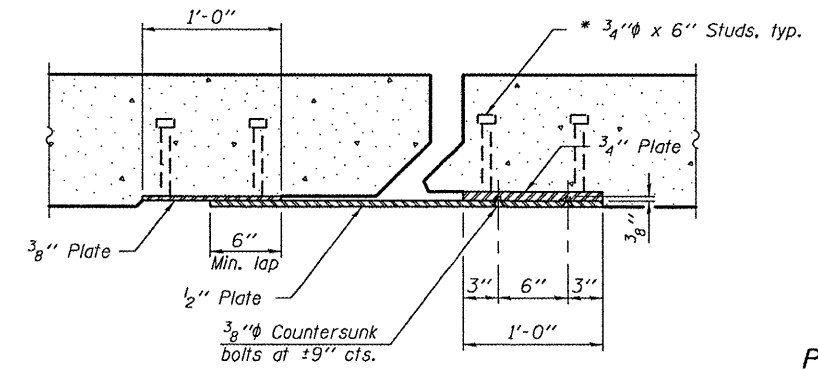


PLAN



SECTION A-A

POINT BLOCK DETAILS
(for skews > 30°)



SECTION B-B

BILL OF MATERIAL

Item	Unit	Total
Preformed Joint Strip Seal	Foot	148.7

PREFORMED JOINT STRIP SEAL DETAILS
IL ROUTE 116 OVER SPOON RIVER
SN 029-0050

DESIGNED	GGE
CHECKED	IJL
DRAWN	Kyle M. Steffen
CHECKED	GGE IJL

JANUARY 12, 2010
EXAMINED *Carl P. ...*
PASSED *Ralph E. ...*

11-1-09

SHEET NO. 5	F.A.P. RTE. 665	SECTION (142-BR)I	COUNTY FULTON	TOTAL SHEETS 25	SHEET NO. 13
8 SHEETS	CONTRACT NO. 68925				
FED. ROAD DIST. NO. ILLINOIS FED. AID PROJECT					