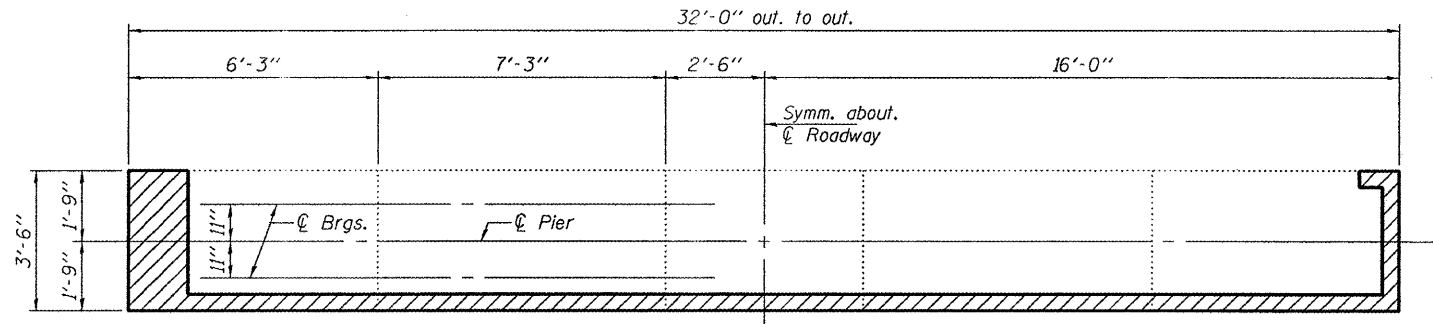
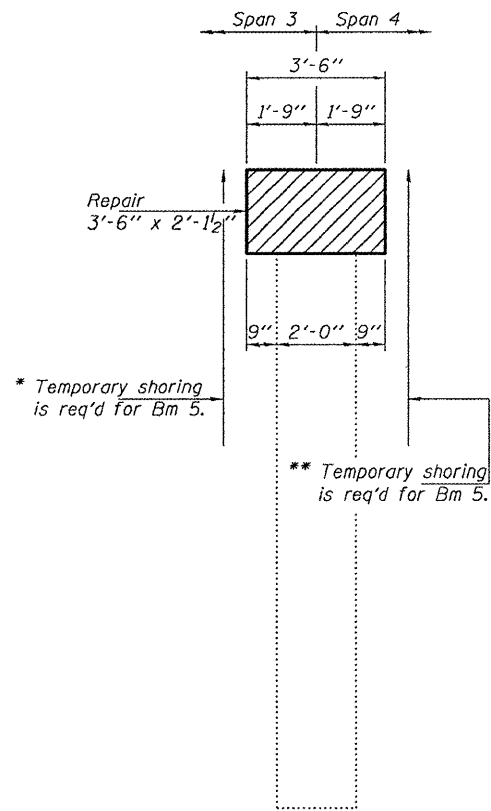


STATE OF ILLINOIS  
DEPARTMENT OF TRANSPORTATION

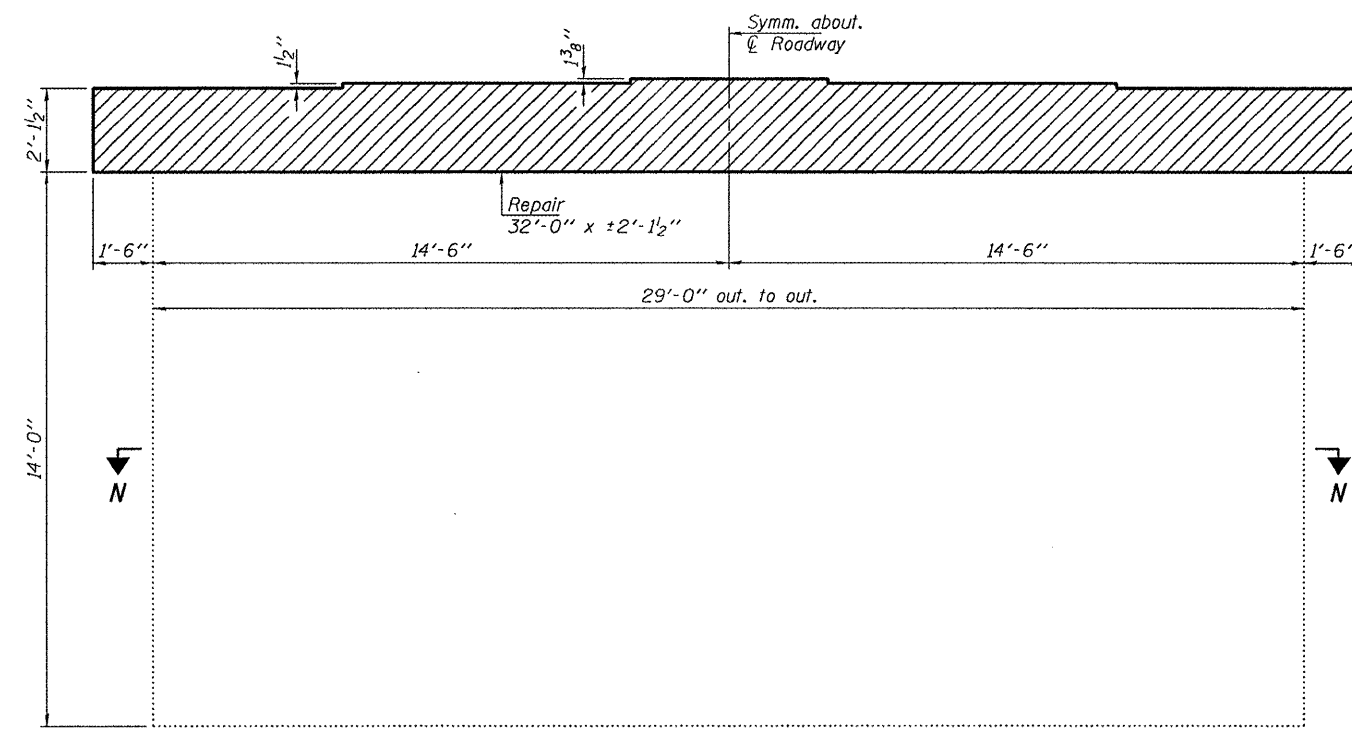
Note:  
All edges shall have standard  
3/4" chamfers except as noted.



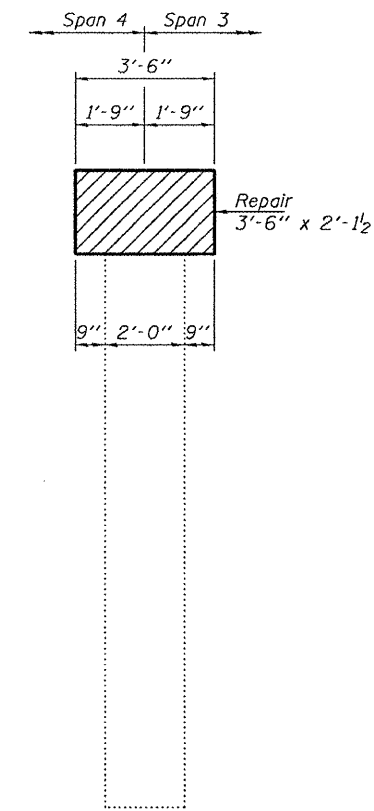
TOP PLAN



WEST END VIEW

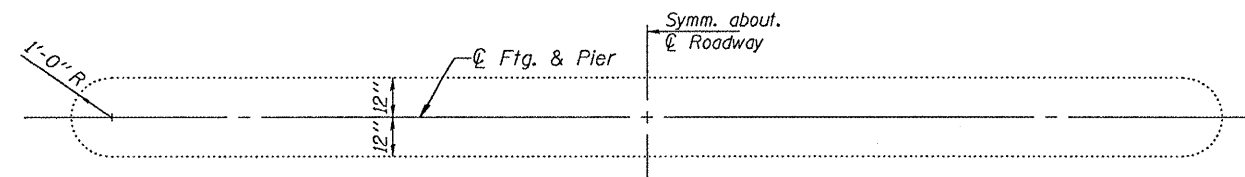


ELEVATION  
(Looking North)



EAST END VIEW

REACTION TABLE AT TEMPORARY SHORING		
Q	(k)	52.4
L	(k)	39.8
Imp.	(k)	10.1
Total	(k)	102.3



SECTION N-N

BILL OF MATERIAL

ITEM	UNIT	QUANTITY
Structural Repair of Concrete (Depth ≤ 5 inches)	Sq. Ft.	89
Temporary Shoring & Cribbing	Each	1

PIER 3 REPAIR DETAILS  
IL ROUTE 116 OVER SPOON RIVER  
SN 029-0050

F.A.P. RTE.	SECTION	COUNTY	TOTAL SHEETS	SHEET NO.
665	(142-BR)I	FULTON	25	18
CONTRACT NO. 68925				
FED. ROAD DIST. NO. ILLINOIS FED. AID PROJECT				

\* Paid for as Temporary Shoring & Cribbing.

\*\* Cost included with Jack & Remove Existing Bearings.

DESIGNED	VHV
CHECKED	DAB
DRAWN	Kyle M. Steffen
CHECKED	VHV DAB