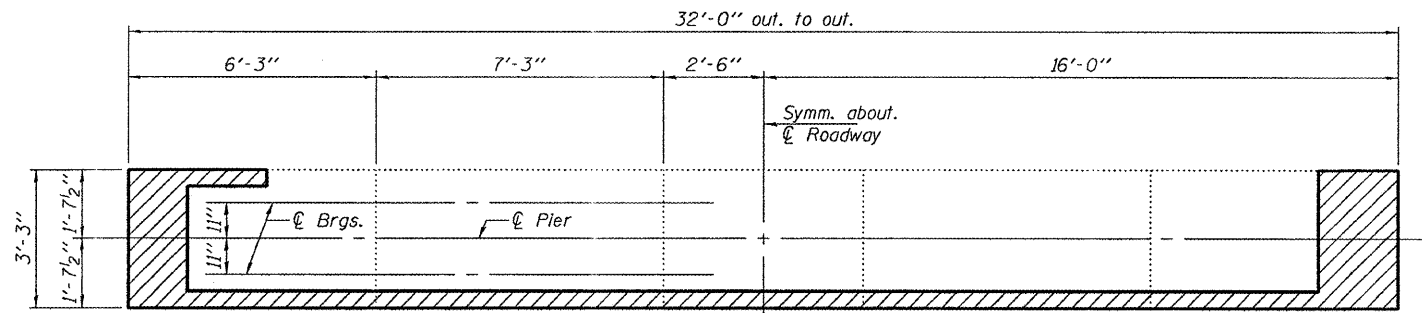
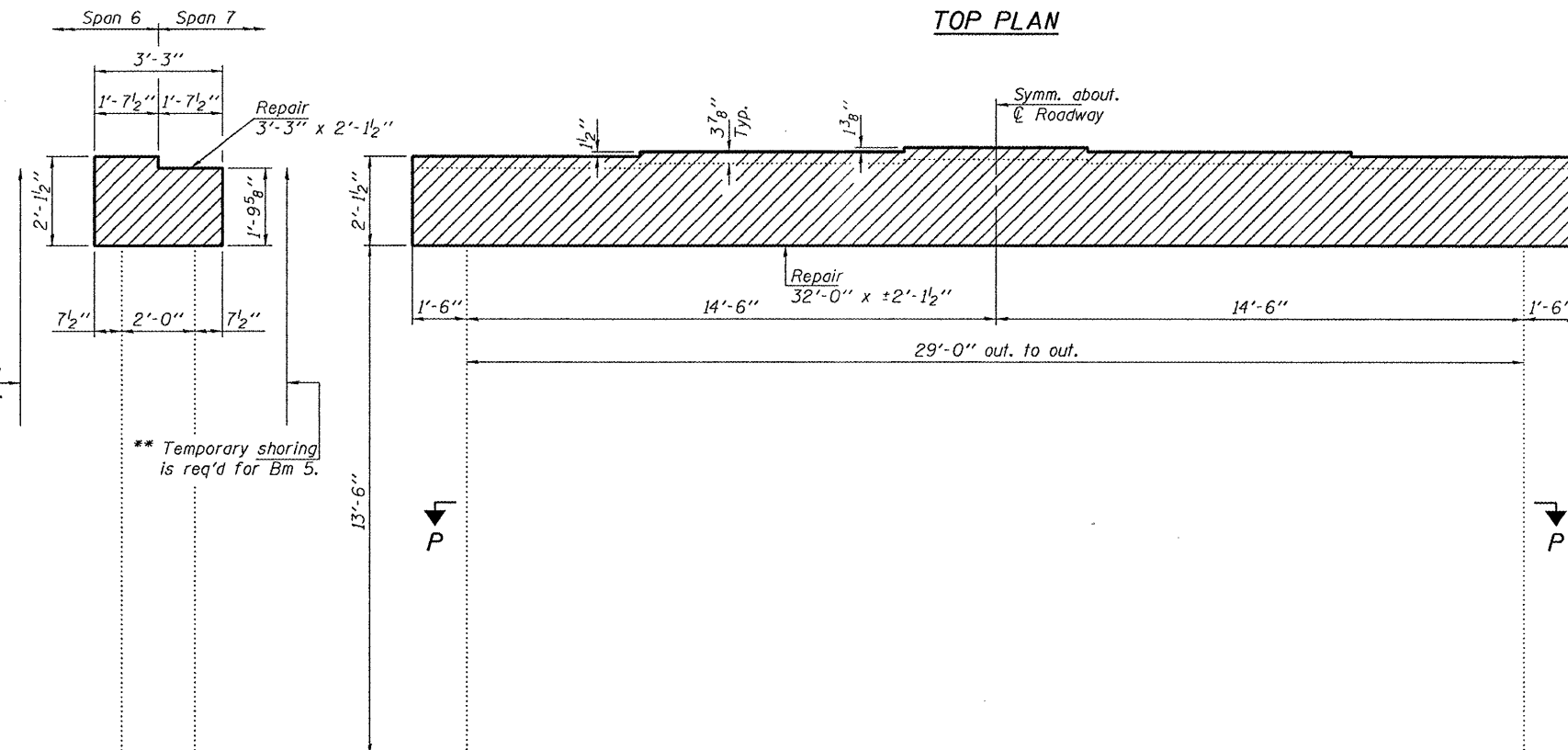


STATE OF ILLINOIS
DEPARTMENT OF TRANSPORTATION

Note:
All edges shall have standard
3/4" chamfers except as noted.

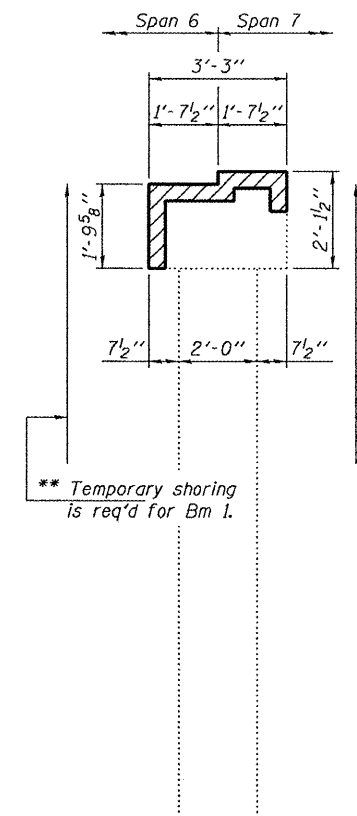


TOP PLAN



ELEVATION
(Looking North)

WEST END VIEW



EAST END VIEW

Structural Repair of Concrete ≤ 5 inches

* Temporary shoring is req'd for Bm 5.

** Temporary shoring is req'd for Bm 5.

* Temporary shoring is req'd for Bm 1.

** Temporary shoring is req'd for Bm 1.

SPAN 6

REACTION TABLE AT TEMPORARY SHORING		
Q	(k)	52.4
L	(k)	39.8
Imp.	(k)	10.1
Total	(k)	102.3

SPAN 7

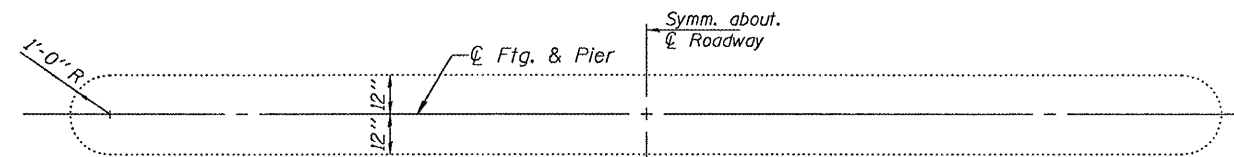
REACTION TABLE AT TEMPORARY SHORING		
Q	(k)	47.7
L	(k)	42.6
Imp.	(k)	9.1
Total	(k)	99.4

BILL OF MATERIAL

ITEM	UNIT	QUANTITY
Structural Repair of Concrete (Depth ≤ 5 inches)	Sq. Ft.	85
Temporary Shoring & Cribbing	Each	2

PIER 6 REPAIR DETAILS
IL ROUTE 116 OVER SPOON RIVER
SN 029-0050

F.A.P. RTE.	SECTION	COUNTY	TOTAL SHEETS	SHEET NO.
665	(142-BR)I	FULTON	25	20
CONTRACT NO. 68925				
FED. ROAD DIST. NO.	ILLINOIS FED. AID PROJECT			



SECTION P-P

DESIGNED	VHV
CHECKED	DAB
DRAWN	Kyle M. Steffen
CHECKED	VHV DAB

* Paid for as Temporary Shoring & Cribbing.

** Cost included with Jack & Remove Existing Bearings.