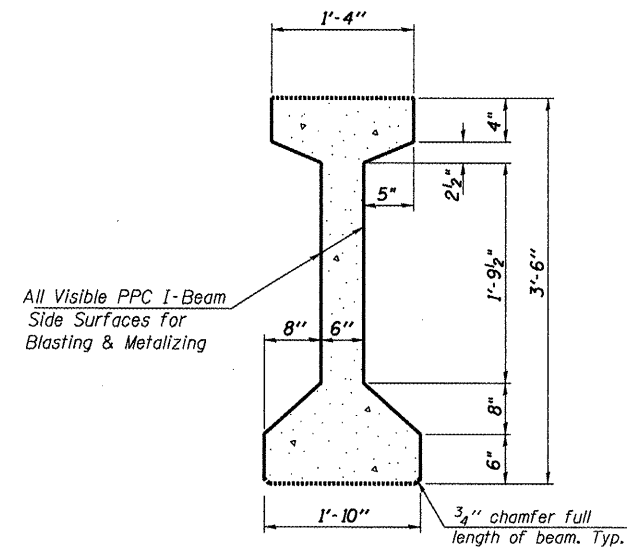
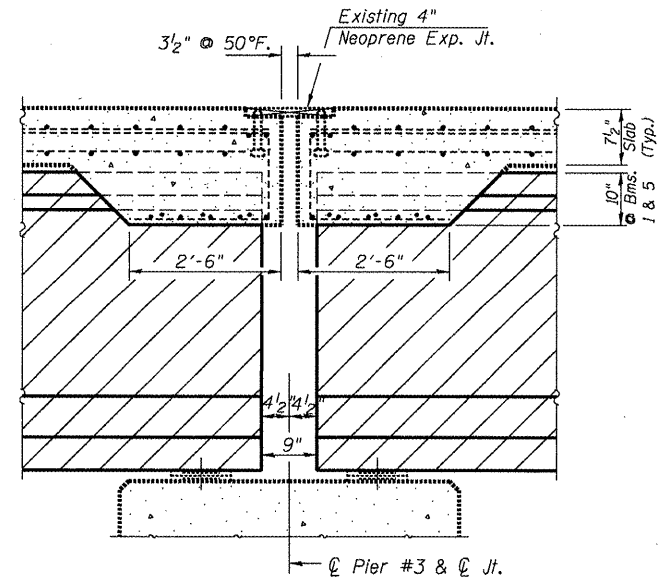


ELEVATION OF BEAM
(Showing blasting/metalizing surface area)

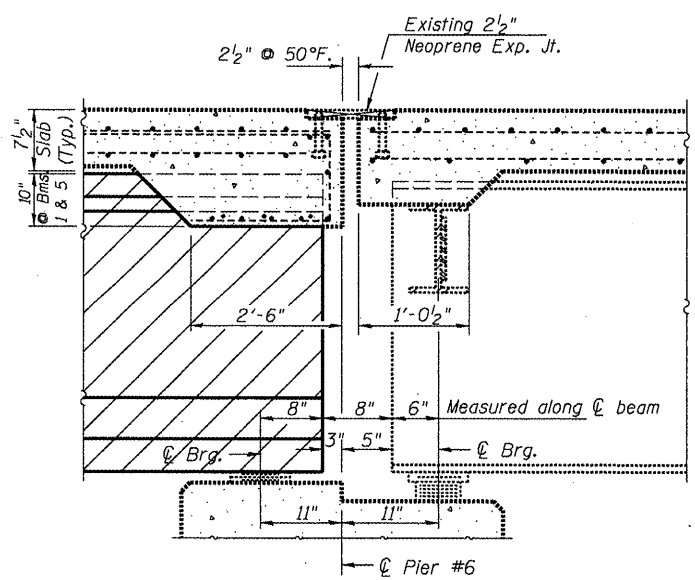
Blast Cleaning & Metalizing Area



PPC I-BEAM CROSS-SECTION
(10 PPC I-Beams - 15 Beam Ends)



PPC BEAM END-SECTION
(PIER #3)



PPC BEAM END-SECTION
(PIER #6)

BILL OF MATERIAL

ITEM	UNIT	QUANTITY
Blast Cleaning PPC Beams	Foot	60
Thermal Spraying (Metalizing) PPC Beam Ends	Sq. Ft.	465

NOTE
All Horizontal dimensions are at right angles to beam ends. Beam length for metalizing shall be measured four feet from each end and covers all visible side surfaces. Surface area of beam for blasting/spraying is 7.8 sq.ft. per lineal beam foot. All bearing plates shall have pack rust sand blasted clean prior to being metalized as beam ends are processed. Cost to be included in "Thermal Spraying (Metalizing) PPC Beam Ends."

FILE NAME =	USER NAME = jonesee	DESIGNED - CEJ	REVISED - ---
SN.029-0050 IL.116 over Spoon Riv. WO D-rain Ex.dgn		DRAWN - CEJ	REVISED - ---
	PLOT SCALE = 103.7851' / IN.	CHECKED - ---	REVISED - ---
	PLOT DATE = 12/1/2009	DATE - 10/21/2009	REVISED - ---

STATE OF ILLINOIS
DEPARTMENT OF TRANSPORTATION

PPC BEAM REPAIR DETAIL

SCALE: _____ SHEET NO. ___ OF ___ SHEETS STA. _____ TO STA. _____

F.A.P. RTE.	SECTION	COUNTY	TOTAL SHEETS	SHEET NO.
665	(142-BR)I	FULTON	25	22
PIER CAP REPAIRS			CONTRACT NO. 68925	
FED. ROAD DIST. NO. 4 ILLINOIS FED. AID PROJECT				

SN.029-0050 IL.116 over Spoon Riv.