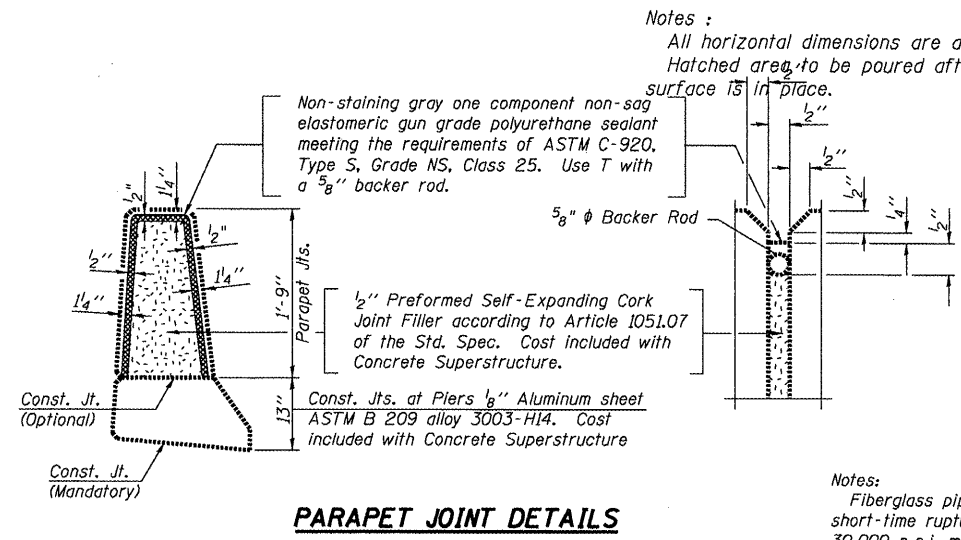


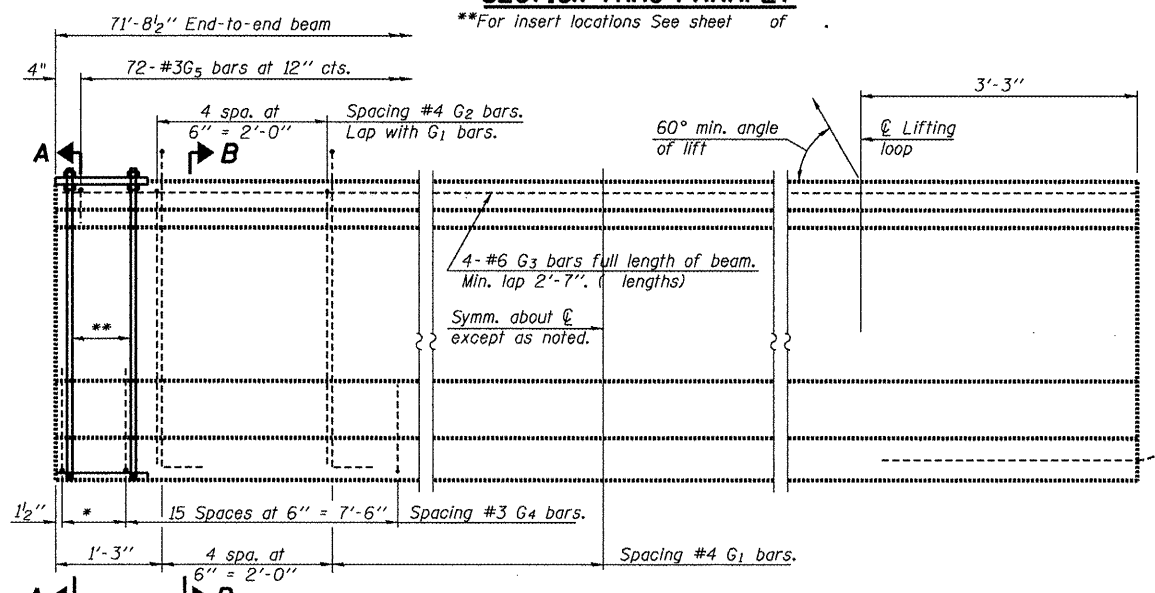
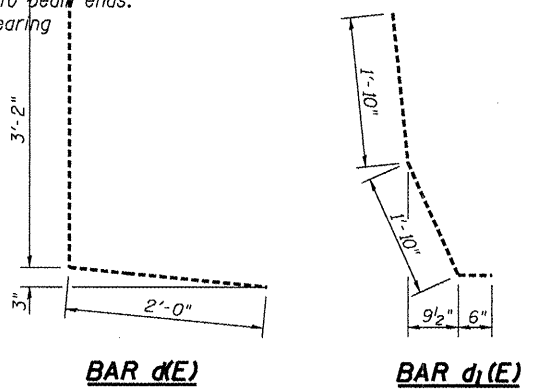
MINIMUM BAR LAP
(Parapet)
#4 bar = 1'-4"
#8 bar = 3'-5"

SECTION THRU PARAPET
**For insert locations See sheet of



PARAPET JOINT DETAILS

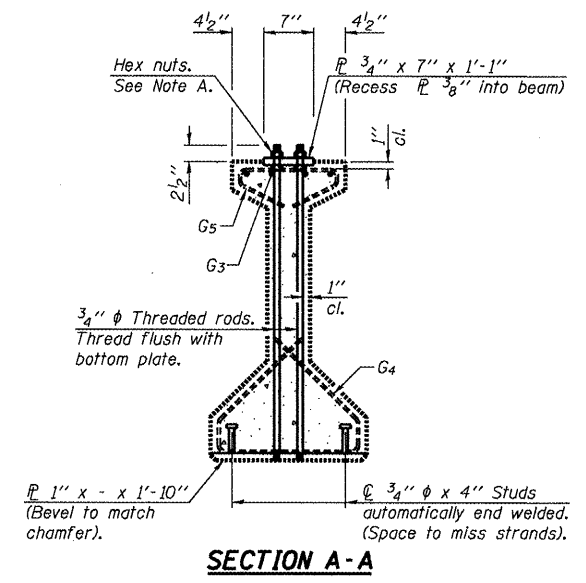
Notes:
Fiberglass pipe shall conform to ASTM D2996, with short-time rupture strength hoop tensile stress of 30,000 p.s.i. minimum.
The exterior surfaces of the floor drains shall be coated or pigmented by the manufacturer with a color that matches the concrete.
The clamping device and inserts shall be galvanized according to AASHTO M 232.



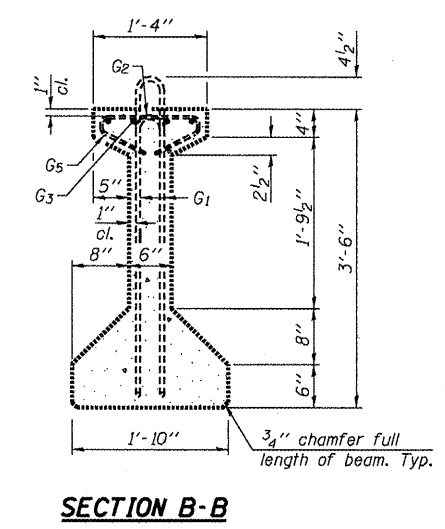
ELEVATION OF BEAM
(Showing reinforcement & dimensions)

2-#8 G6 bars at pier only. (See sheet of for details).

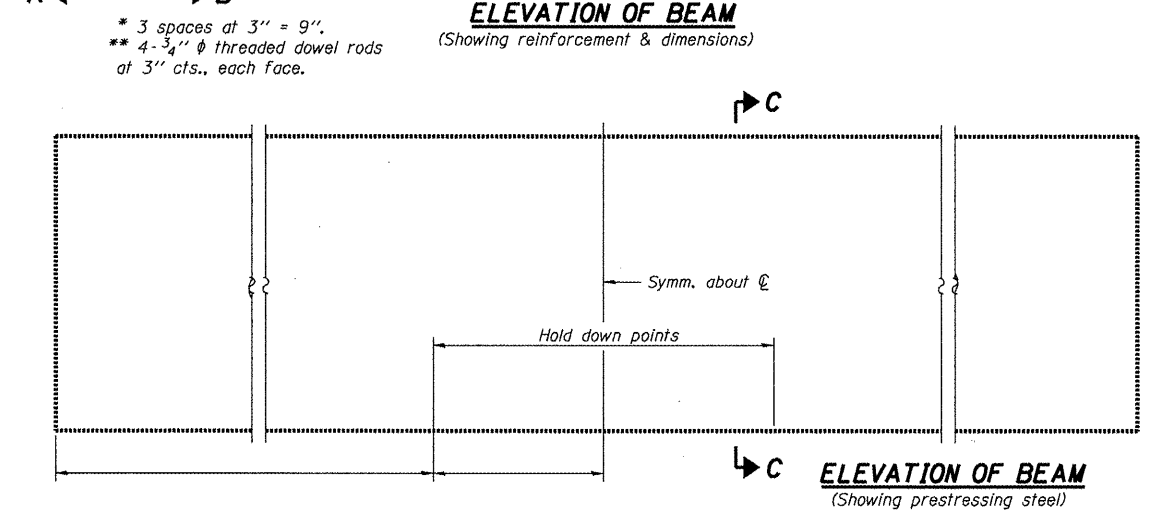
Note A:
Hex nuts (top and bottom) with lock washers (top). Only tighten sufficiently to compress lock washers.



SECTION A-A



SECTION B-B



ELEVATION OF BEAM
(Showing prestressing steel)

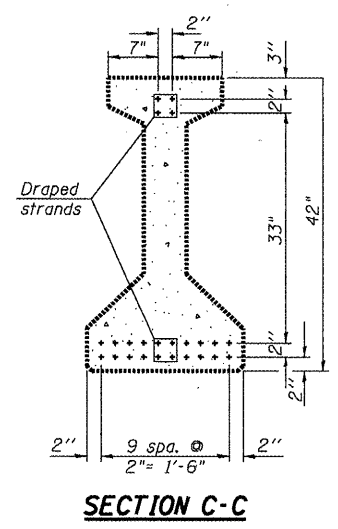
BAR LIST ONE BEAM ONLY

Bar	No.	Size	Length	Shape
G1		#4	8'-5"	∩
G2		#4	6'-8"	∩
G3		#6		—
G4		#3	4'-11"	∩
G5		#3	2'-6"	∩
G6		#8	3'-9"	∩

*** For information only

Notes:
See sheet of for additional details and Bill of Material.
Required release strength, f'ci, shall be psi.

FOR INFORMATION ONLY



SECTION C-C

42" PPC I-BEAM

S:\GEN\DRAW\STD&PLNS\SQUAD\BRIDGE CONTRACTS\JOINTS\68925 SN.029-0050\IL.116ovrSpoonRiv.dgn

FILE NAME =	USER NAME = jonesce	DESIGNED - CEJ	REVISED - ---
SN.029-0050 IL.116ovrSpoonRiv.WD DrainExt.dgn		DRAWN - CEJ	REVISED - ---
PLOT SCALE = 103.7051' / IN.		CHECKED - ---	REVISED - ---
PLOT DATE = 12/1/2009		DATE - 06/03/2009	REVISED - ---

STATE OF ILLINOIS
DEPARTMENT OF TRANSPORTATION

SCALE: -----	SHEET NO. -- OF -- SHEETS	STA. ----- TO STA. -----
--------------	---------------------------	--------------------------

F.A.P. RTE. 665	SECTION (142-BR1)	COUNTY FULTON	TOTAL SHEETS 25	SHEET NO. 2
SUPERSTRUCTURE REPAIRS			CONTRACT NO. 68925	
FED. ROAD DIST. NO. 4 ILLINOIS FED. AID PROJECT				

SN.029-0050 IL.116 over Spoon Riv.