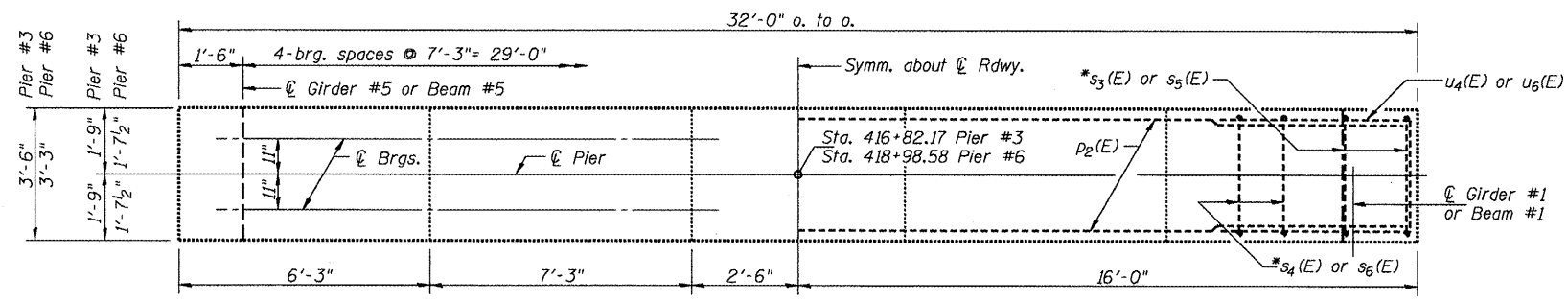


Notes:
 Space reinforcement in cap to miss anchor bolts.
 All edges shall have standard $\frac{3}{4}$ " chamfers except as noted.
 Pour steps monolithically with cap.

PILE DATA

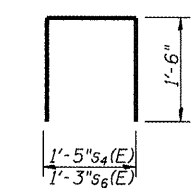
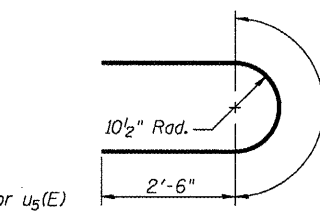
Type: Steel (HP10x42)
 Capacity: drive to refusal
 Est. Length: 34 Ft.
 No. Required: 8+1 Test Pile Pier #6
 9 Pier #3



TOP PLAN

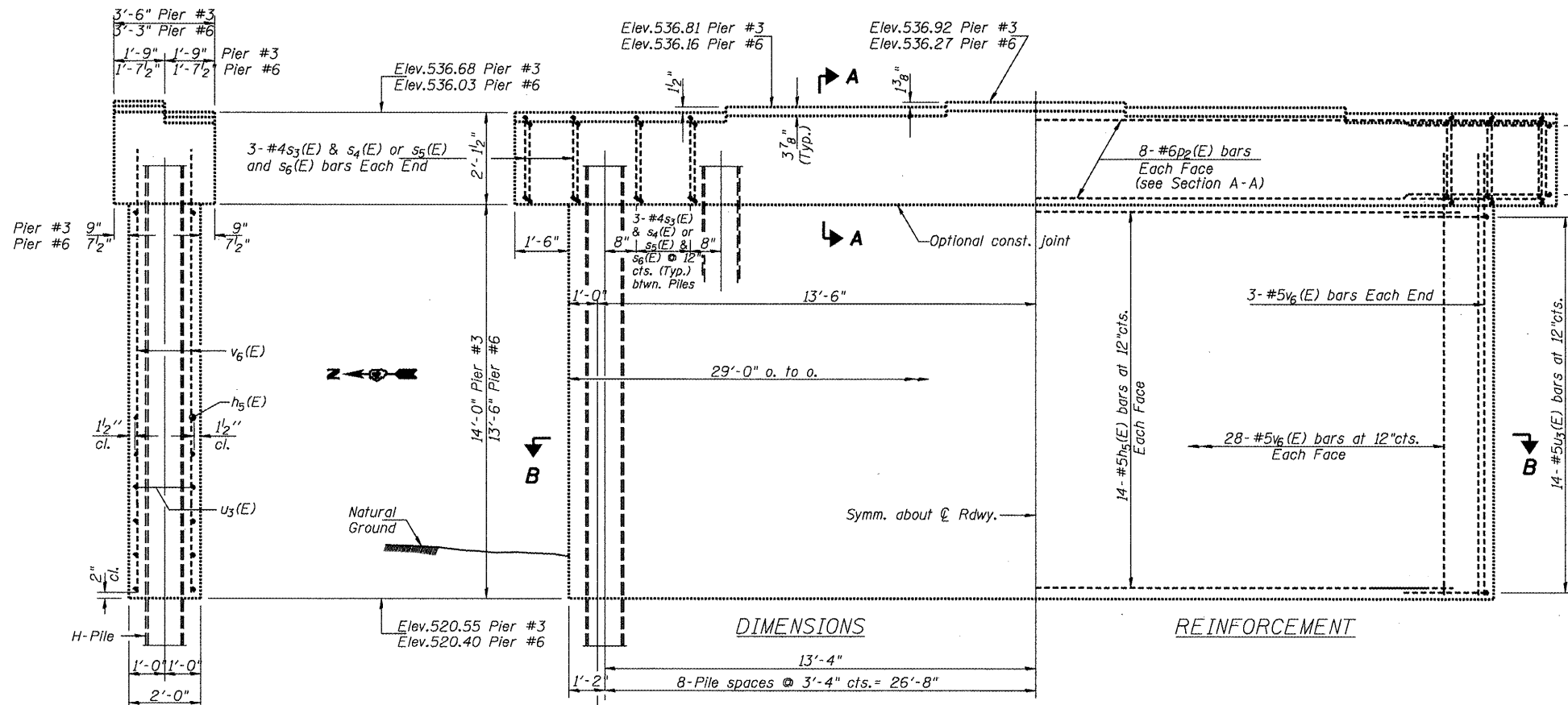
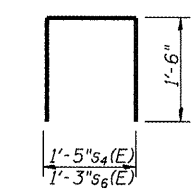
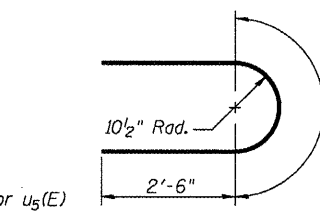
BARS U4(E) & U5(E)

BAR s3(E) & s5(E)

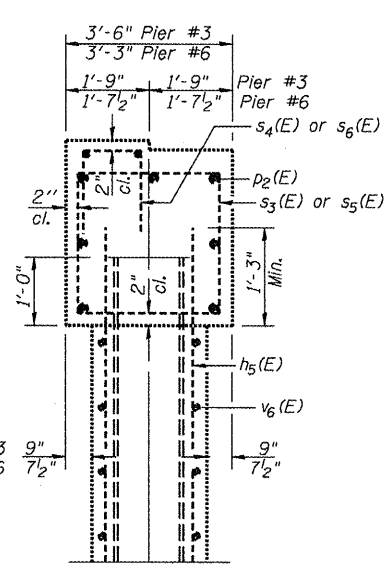


BAR u3(E)

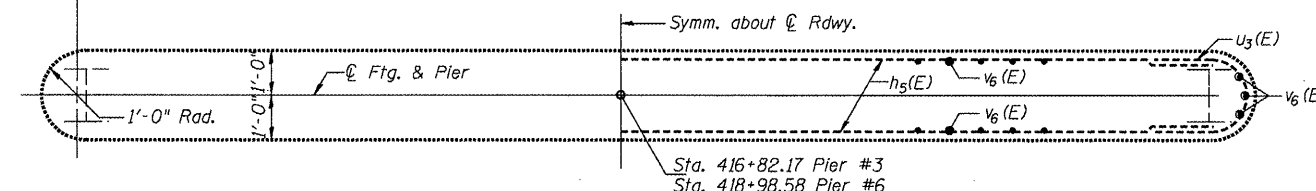
BARS s4(E) & s6(E)



ELEVATION
(Looking North)



SECTION A-A



SECTION B-B

BILL OF MATERIAL

Bar	No.	Size	Length	Shape
h5(E)	56	#5	27'-0"	—
u3(E)	16	#6	31'-9"	—
s3(E)	30	#4	10'-1"	□
s4(E)	30	#4	4'-5"	□
s5(E)	30	#4	9'-7"	□
s6(E)	30	#4	4'-3"	□
u4(E)	6	#6	9'-1"	U
u5(E)	6	#6	8'-10"	U
v6(E)	124	#5	15'-0"	—
Structure Excavation			Cu. Yd.	
Concrete Structures			Cu. Yd.	74.7
Reinforcement Bars, Epoxy Coated			Pound	5470
Furnishing - Piles,			Foot	578
Driving Piles			Foot	
Test Pile,			Each	1

FOR INFORMATION ONLY

S:\GEN\DRAWING\STDS&PLNS\SQUAD\4\BRIDGE CONTRACTS\JOINTS\68925 SN.029-0050\SN.029-0050 IL.L1609SpoonRiv.dgn

PC-1

FILE NAME =	USER NAME = jonesce	DESIGNED - CEJ	REVISED -
SN.029-0050 IL.L1609SpoonRiv.WD DrainExt.dgn		DRAWN - CEJ	REVISED -
PLOT SCALE = 100.7091' / IN.		CHECKED -	REVISED -
PLOT DATE = 12/1/2009		DATE - 06/15/2009	REVISED -

STATE OF ILLINOIS
DEPARTMENT OF TRANSPORTATION

EXISTING PIERS #3 & #6

SCALE: _____ SHEET NO. _____ OF _____ SHEETS STA. _____ TO STA. _____

F.A.P. RTE. 665	SECTION (142-BR1)	COUNTY FULTON	TOTAL SHEETS 25	SHEET NO. 25
SUPERSTRUCTURE REPAIRS		CONTRACT NO. 68925		
FED. ROAD DIST. NO. 4 (ILLINOIS) FED. AID PROJECT				

SN.029-0050 IL.116
 over Spoon Riv.