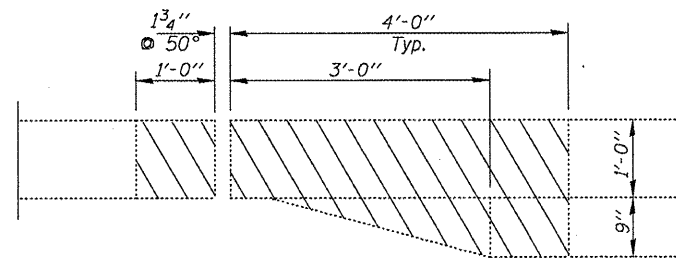


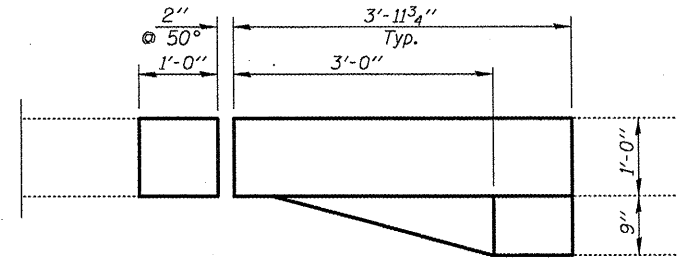
Existing rail to be removed, stored and reattached
See sheet 18 of 23 for details. Cost included with
Removing and Re-erecting Existing Rail.

Note
The Contractor shall use extreme caution
during concrete removal so as not to damage
the PPC I-Beam.

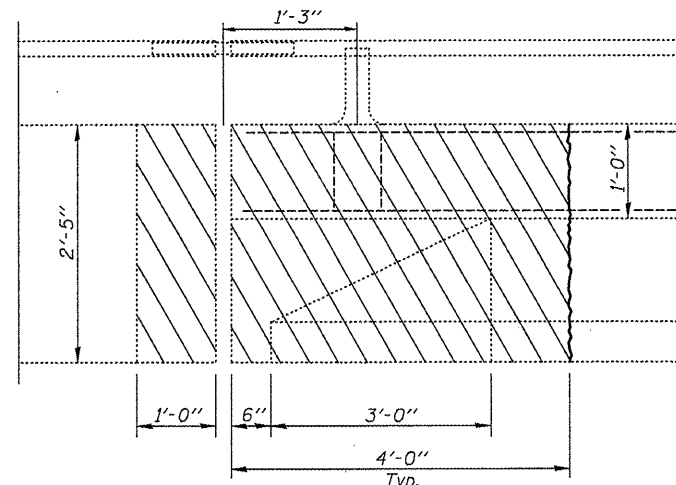
CROSS SECTION
(Looking North)



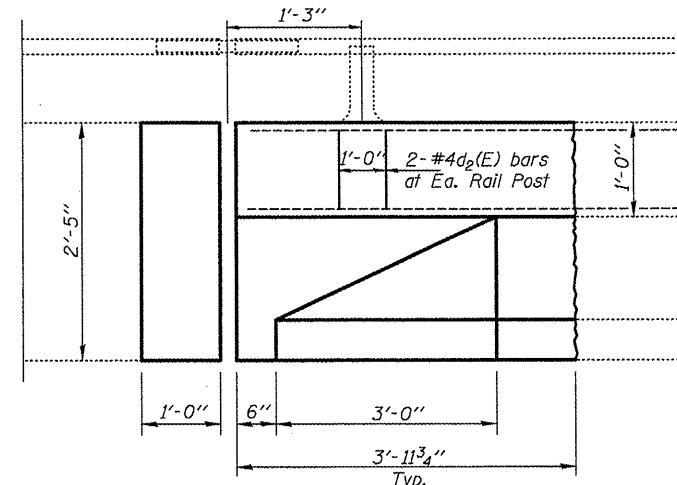
PLAN PARAPET REMOVAL
(NE Parapet - mirror of NW)



PLAN PARAPET REPLACEMENT
(NE Parapet - mirror of NW)



INSIDE ELEVATION OF PARAPET
(Facing NE Parapet Showing Removal)



INSIDE ELEVATION OF PARAPET
(Facing NE Parapet Showing Replacement)

Existing Concrete Removal

BILL OF MATERIAL

Bar	No.	Size	Length	Shape
a(E)	8	#6	14'-0"	—
a1(E)	8	#6	18'-0"	—
a2(E)	8	#6	4'-9"	—
a3(E)	5	#6	4'-6"	—
a4(E)	5	#6	1'-6"	—
a5(E)	15	#6	6'-3"	—
d(E)	8	#4	4'-6"	L
d1(E)	8	#5	4'-3"	J
d2(E)	4	#4	2'-1"	n
h(E)	4	#6	14'-9"	—
h1(E)	4	#6	18'-9"	—
x(E)	53	#6	7'-5"	—
Bar Splicers			Each	17
Concrete Removal			Cu. Yd.	13.5
Concrete Superstructure			Cu. Yd.	13.6
Reinforcement Bars, Epoxy Coated			Pound	1480

S:\BENDRAFT\ST&PLNS\SOA\AD\4\BRIDGE CONTRACTS\JOINTS\JOINTS - 0\rev1.dwg 68928 SNUR2-824\IL170r-M11C-1.dwg

Notes
Concrete quantity is included with Concrete Superstructure.
Existing threaded rods to be incorporated into new construction.
Cost included with concrete removal.

FILE NAME =	USER NAME = #USER#	DESIGNED - CEJ	REVISED -
#FILE#		DRAWN - CEJ	REVISED -
	PLOT SCALE = #SCALE#	CHECKED -	REVISED -
	PLOT DATE = #DATE#	DATE - 09/25/2009	REVISED -

STATE OF ILLINOIS
DEPARTMENT OF TRANSPORTATION

NORTH ABUTMENT JOINT DETAIL

SCALE: SHEET NO. OF SHEETS STA. TO STA.

RTE.	SECTION	COUNTY	TOTAL SHEETS	SHEET NO.
702	014BR-1I	WOODFORD	23	16
MISC. BRIDGE REPAIRS			CONTRACT NO. 68928	
FED. ROAD DIST. NO. 4 (ILLINOIS) FED. AID PROJECT				

SN. 102-0041 IL.117 ovr
MILL CRK. S. of US24