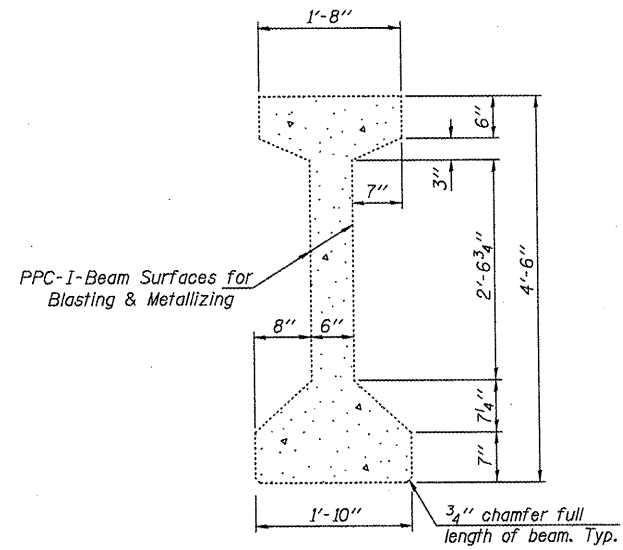
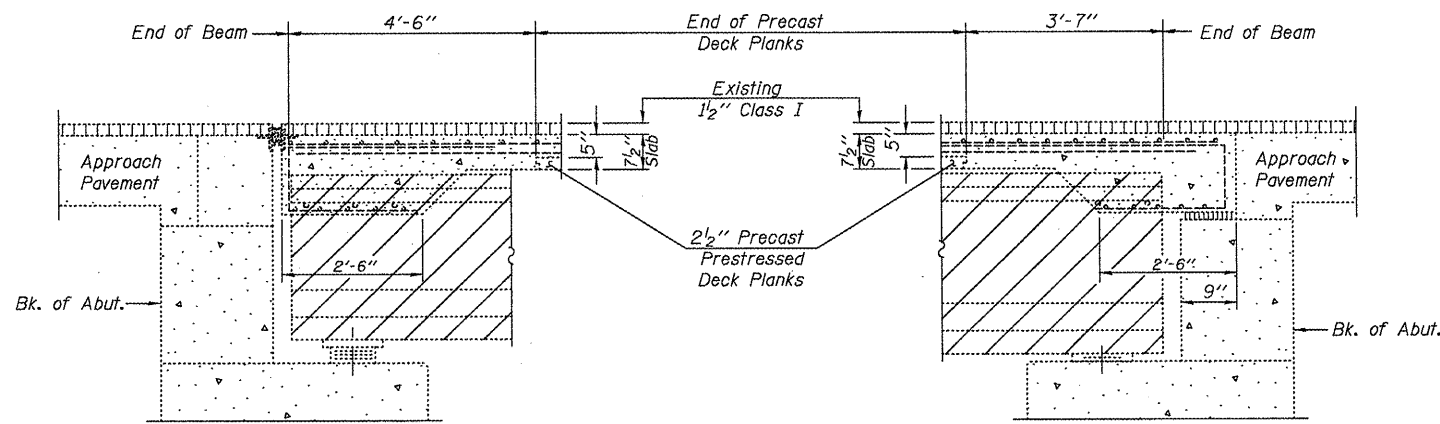


ELEVATION OF BEAM
(Showing blasting/Metallizing surface area)



PPC I-BEAM CROSS-SECTION
(5 PPC I-Beams
10 Beam Ends)



PPC BEAM END-SECTION
(NORTH ABUT.)

PPC BEAM END-SECTION
(SOUTH ABUT.)

BILL OF MATERIAL

ITEM	UNIT	QUANTITY
Thermal Spraying (Metallizing) PPC Beam Ends	Sq. Ft.	414

NOTE
All Horizontal dimensions are at right angles to beam ends.
Beam length for Metallizing shall be measured four feet from each end and covers all visible side surfaces. Surface area of beam for blasting/spraying is 10.4 sq.ft. per lineal beam foot.
All bearing plates shall have pack rust sand blasted clean prior to being metallized as beam ends are processed. Cost to be included in "Thermal Spraying (Metallizing) PPC Beam Ends."

SN. 102-0041 IL.117 ovr
MILL CRK. S. of US24

FILE NAME =	USER NAME = #USER#	DESIGNED - CEJ	REVISED -
#FILE#		DRAWN - CEJ	REVISED -
	PLOT SCALE = #SCALE#	CHECKED -	REVISED -
	PLOT DATE = #DATE#	DATE - 09/09/2009	REVISED -

STATE OF ILLINOIS
DEPARTMENT OF TRANSPORTATION

PPC BEAM REPAIR DETAIL

SCALE: SHEET NO. OF SHEETS STA. TO STA.

RTE.	SECTION	COUNTY	TOTAL SHEETS	SHEET NO.
702	(114BR-1)I	WOODFORD	23	20
MISC. BRIDGE REPAIRS			CONTRACT NO. 68928	
FED. ROAD DIST. NO. 4 ILLINOIS FED. AID PROJECT				

S:\ENVDRAFT\ST&PLNS\SOI\BRIDGE CONTRACTS\JOINTS\JOINTS.dwg 9/9/09 11:17 AM MLIC-ldg