

F.A.P. RTE.	SECTION	COUNTY	TOTAL SHEETS	SHEET NO.
626	(42B)I	KNOX	8	1
		IL 9	CONTRACT NO. 68938	

STATE OF ILLINOIS
DEPARTMENT OF TRANSPORTATION
DIVISION OF HIGHWAYS

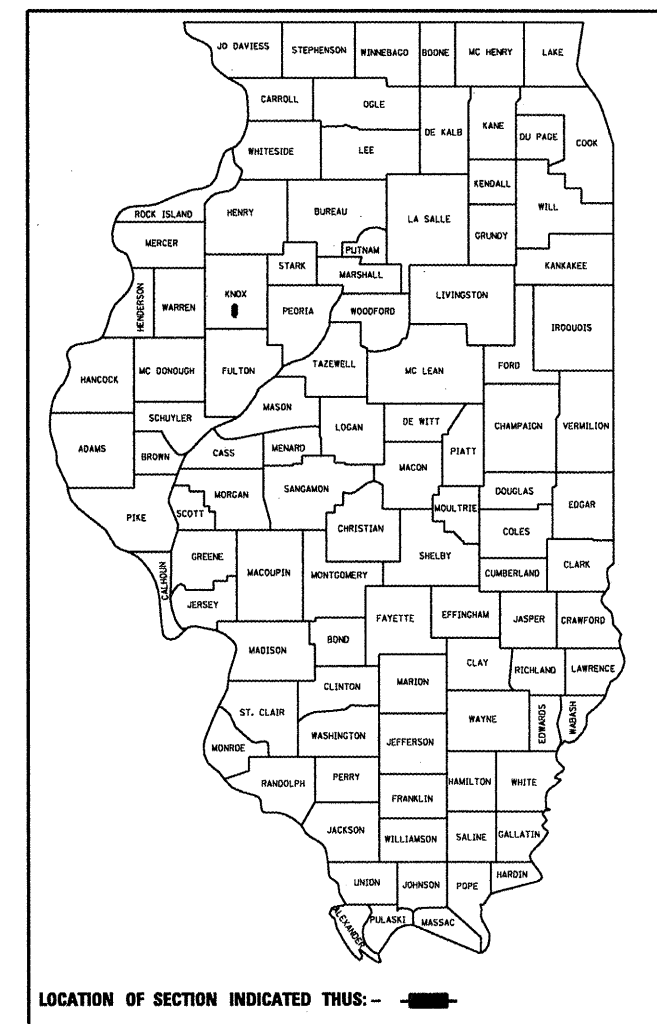
PROPOSED HIGHWAY PLANS

FAP ROUTE 626(IL97)
SECTION (42B)I-1

DECK BEAM BRACING (S.N. 048-0014)
KNOX COUNTY

C-94-003-10

D-94-002-10



PROJECT CONSISTS OF BEAM BRACING OF ONE
PPC DECK BEAM ON STRUCTURE (048-0014)
CARRYING IL97 OVER HAW CREEK TRIBUTARY.
6.5 MILES N. OF MAQUON

STATE OF ILLINOIS
DEPARTMENT OF TRANSPORTATION
DIVISION OF HIGHWAYS

SUBMITTED *12/15/09* 20 *10/10/09*
[Signature]
DEPUTY DIRECTOR OF HIGHWAYS, REGION ENGINEER

January 09 20 10
Sobit E. Still P.E.
ACTING ENGINEER OF DESIGN AND ENVIRONMENT

January 09 20 10
Christine M. Reed
DIRECTOR OF HIGHWAYS, CHIEF ENGINEER

**PRINTED BY THE AUTHORITY
OF THE STATE OF ILLINOIS**

INDEX OF SHEETS:

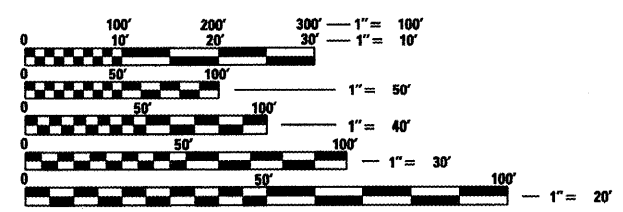
1. COVER SHEET
2. GENERAL NOTES
3. SUMMARY OF QUANTITIES
4. TYPICAL SECTIONS
5. SCHEDULE OF QUANTITIES
6. GENERAL LAYOUT
- 7-8. STRUCTURE PLANS

HIGHWAY STANDARDS:

- 000001-05 701201-03
- 001001-02 701301-03
- 701001-02 701901-01
- 701006-03

DESIGN DESIGNATION

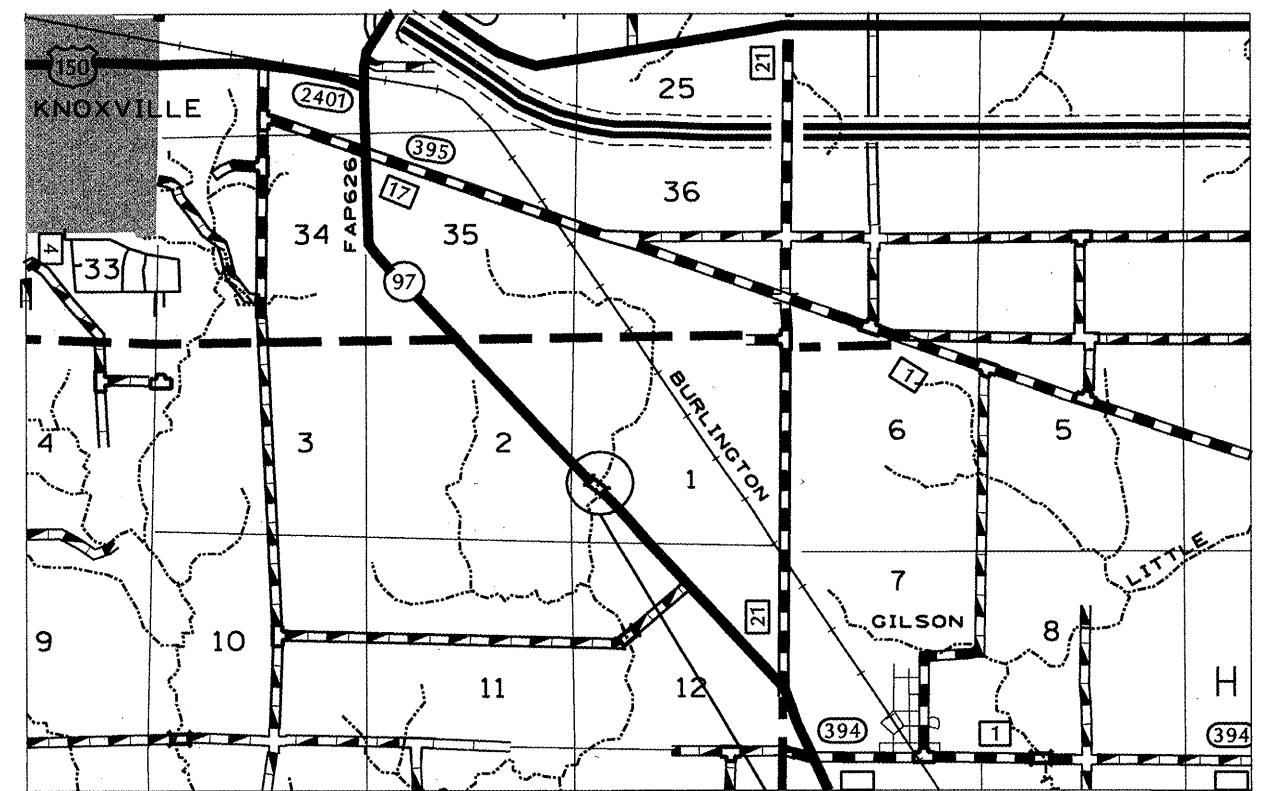
MINOR ARTERIAL
ADT = 2200 (2007)
SU = 80
MU = 100



FULL SIZE PLANS HAVE BEEN PREPARED USING STANDARD
ENGINEERING SCALES. REDUCED SIZED PLANS WILL NOT
CONFORM TO STANDARD SCALES. IN MAKING MEASUREMENTS
ON REDUCED PLANS, THE ABOVE SCALES MAY BE USED.

J.U.L.I.E.
JOINT UTILITY LOCATION INFORMATION FOR EXCAVATION
1-800-892-0123
OR 811

PROJECT ENGINEER: RICH DOTSON (309)671-3455
PROJECT MANAGER: NICHOLAS JACK (309)671-3466
DESIGNER: BETHANY EICHHORN (309)671-3467
CATALOG NO. 034331-00D
CONTRACT NO. 68938



HAW CREEK TRIBUTARY STRUCTURE
(S.N. 048-0014)

F.A.P. RTE.	SECTION	COUNTY	TOTAL SHEETS	SHEET NO.
626	(42B)1	KNOX	8	2
STA. 396+95.50		TO STA. 397+28.50		
FED. ROAD DIST. NO. 4		ILLINOIS	FED. AID PROJECT	
CONTRACT NO. 68938				

GENERAL NOTES

PLAN DIMENSIONS AND DETAILS RELATIVE TO EXISTING STRUCTURE HAVE BEEN TAKEN FROM EXISTING PLANS AND ARE SUBJECT TO NOMINAL CONSTRUCTION VARIATIONS. IT SHALL BE THE CONTRACTOR'S RESPONSIBILITY TO VERIFY SUCH DIMENSIONS AND DETAILS IN THE FIELD AND MAKE NECESSARY APPROVED ADJUSTMENTS PRIOR TO CONSTRUCTION OR ORDERING OF MATERIALS. SUCH VARIATIONS SHALL NOT BE CAUSE FOR ADDITIONAL COMPENSATION FOR A CHANGE IN THE SCOPE OF THE WORK, HOWEVER, THE CONTRACTOR WILL BE PAID FOR THE QUANTITY ACTUALLY FURNISHED AT THE UNIT PRICE BID FOR THE WORK.

ENVIRONMENTAL REVIEWS

PRIOR TO THE USE OF ANY PROPOSED BORROW AREAS, USE AREAS (TEMPORARY ACCESS ROADS, DETOURS, RUN-AROUNDS, ETC.) AND/OR WASTE AREAS, THE CONTRACTOR SHALL FILE THE REQUIRED ENVIRONMENTAL RESOURCE REQUEST SURVEYS ACCORDING TO SECTION 107.22 OF THE STANDARD SPECIFICATIONS. THESE SURVEYS ARE REQUIRED IN ORDER FOR THE DEPARTMENT TO CONDUCT CULTURAL AND BIOLOGICAL RESOURCE SURVEYS FOR THE PROPOSED SITE.

PRIOR TO ANY WASTE MATERIALS BEING REMOVED FROM THE CONSTRUCTION SITE THE REQUIRED ENVIRONMENTAL RESOURCE SURVEYS WILL NEED TO BE OBTAINED AND FILED BY THE CONTRACTOR. EXCESS WASTE PRODUCTS REMOVED FROM THE CONSTRUCTION SITE SHALL BE DISPOSED OF AS REQUIRED IN SECTION 202.03 OF THE STANDARD SPECIFICATIONS.

ANY PROTRUDING METAL BARS SHALL BE REMOVED PRIOR TO THE DISPOSAL OF BROKEN CONCRETE AT APPROVED DISPOSAL SITES.

THE REQUIRED ENVIRONMENTAL RESOURCE DOCUMENTATION SHALL INCLUDE THE FOLLOWING:

- * BDE FORM 2289 (ENVIRONMENTAL SURVEY REQUEST)
- * A LOCATION MAP SHOWING THE SIZE LIMITS AND LOCATION OF THE USE AREA
- * SIGNED PROPERTY OWNER AGREEMENT FORM-D4 PI0100
- * COLOR PHOTOGRAPHS DEPICTING THE USE AREA
- * BORROW AREA ENTRY AGREEMENT FORM-D4 PI0101

PLEASE NOTE THAT A MINIMUM OF TWO WEEKS SHALL BE ALLOWED FOR THE DISTRICT TO OBTAIN THE REQUIRED ENVIRONMENTAL CLEARANCES.

COMMITMENTS

NO COMMITMENTS HAVE BEEN MADE FOR THIS PROJECT.

PLOT DATE * 04/27/09
 FILE NAME * I:\FILES\GEN\DRG\T\STD\PLANS\SD\040708\68938\68938-PL-01.dgn
 PLOT SCALE * 5/16"=1'-0"
 PLOT SIZE * 11" x 17"

REVISIONS		ILLINOIS DEPARTMENT OF TRANSPORTATION
NAME	DATE	
		GENERAL NOTES

SCALE: VERT. DRAWN BY BRE
 HORIZ. CHECKED BY
 DATE 07-29-2009

F.A.P. RTE.	SECTION	COUNTY	TOTAL SHEETS	SHEET NO.
626	(42B)1	KNOX	8	5
STA. 396+95.50 TO STA. 397+28.50				
FED. ROAD DIST. NO. 4 ILLINOIS FED. AID PROJECT				
CONTRACT NO. 68938				

SCHEDULE OF QUANTITIES

MOBILIZATION SCHEDULE

LOCATION	UNIT	QUANTITY
Jobsite	LSUM	1.0

T.C. & P STANDARD 701201

LOCATION	UNIT	QUANTITY
Project Limits	LSUM	1.0

FURNISH & ERECT STRUCTURAL STEEL

LOCATION	UNIT	QUANTITY
Under Existing Superstructure	POUND	2770

EROSION CONTROL BLANKET

LOCATION	UNIT	QUANTITY
Jobsite Embankment & R.O.W.	SQYD	500

#DATE: 07-29-09
 #FILE: S:\VENOR\DRFT\STAMP\NS\SOUND\B\68938\68938-PLAN.dgn
 #PLOT: 1146 / IN.
 #REF:

REVISIONS	
NAME	DATE

ILLINOIS DEPARTMENT OF TRANSPORTATION

SCHEDULE OF QUANTITIES

SCALE: VERT. _____
 HORIZ. _____
 DATE: 07-29-09

DRAWN BY: BRE
 CHECKED BY: _____

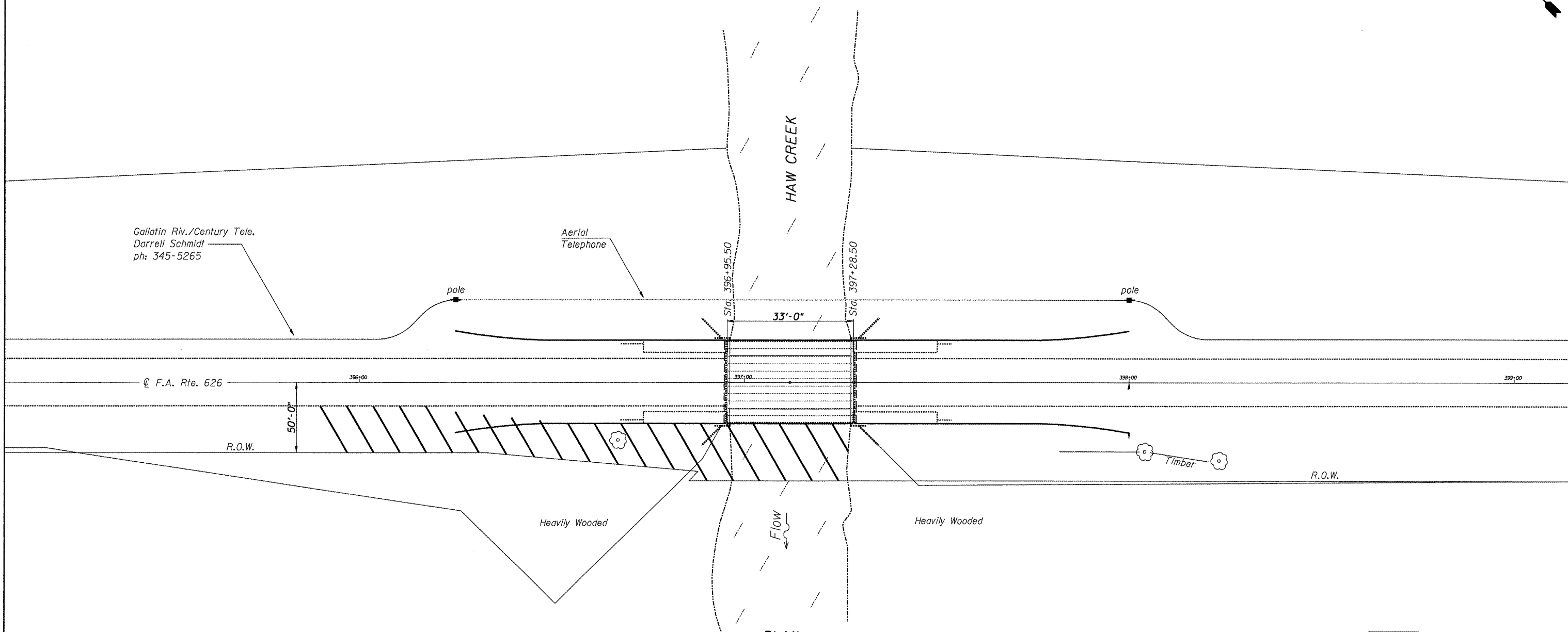
B.M. - Chisled square on NW abutment of bridge, Sta. 396+95, Elev. 667.15

F.A.P. RTE.	SECTION	COUNTY	TOTAL SHEETS	SHEET NO.
626	(42B)I	KNOX	8	6
STA. 396+95.50		TO STA. 397+28.50		
FED. ROAD DIST. NO. 4		ILLINOIS FED. AID PROJECT		
CONTRACT NO. 68938				

T10N- R2E- 4th P.M.
SECTION 1

JOHN W. McCLAY

LILLIE McELWAIN



Gallatin Riv./Century Tele.
Darrell Schmidt
ph: 345-5265

Aerial Telephone

© F.A. Rte. 626

R.O.W.

50'-0"

Heavily Wooded

Flow

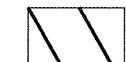
Heavily Wooded

Timber

R.O.W.

PLAN

Hilltop Barnyard/Farm-House

 Optimum Contractor Access/Work Area

NICHOLAS SIEBERT

SN.048-0014 IL.97
over HAW CRK.
Sta. 397+12.00

REVISIONS	
NAME	DATE

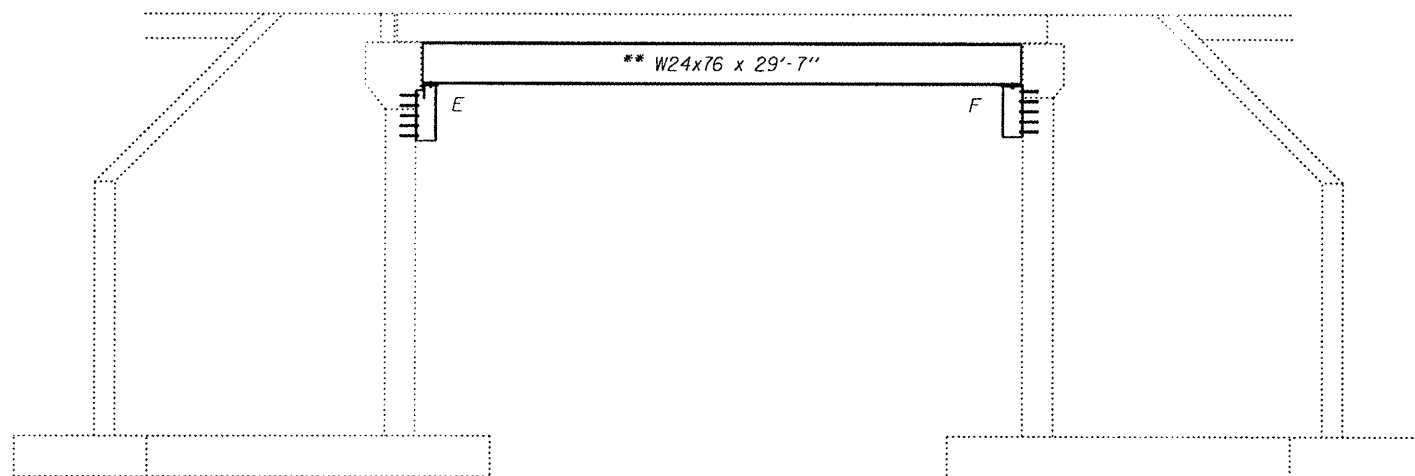
ILLINOIS DEPARTMENT OF TRANSPORTATION

GENERAL LAYOUT

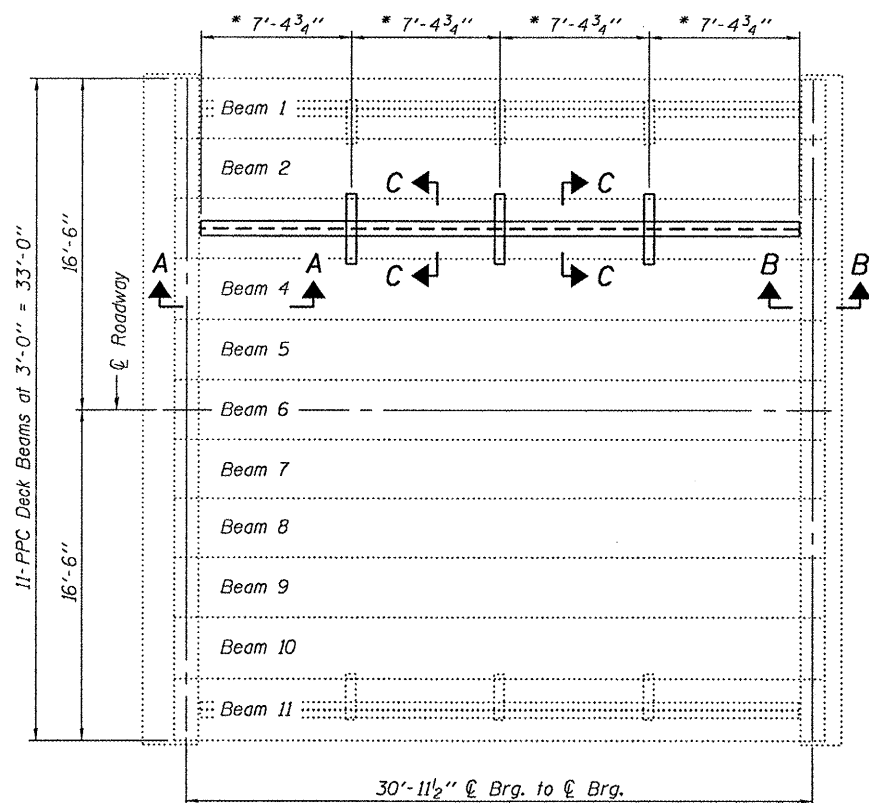
SCALE: VERT.
HORIZ.
DATE 07-29-2009

DRAWN BY BRE
CHECKED BY

STATE OF ILLINOIS
DEPARTMENT OF TRANSPORTATION



ELEVATION



PLAN

** Contractor is to verify beam length prior to ordering material. Other sections meeting the section modulus requirements shown may be allowed subject to approval by the Bureau of Bridges and Structures. Maximum Girder depth = 24". No additional payment will be allowed if the Contractor chooses a heavier steel section than the one specified in the plans. (Min. $S_x = 176 \text{ in.}^3$)

* \varnothing Transverse tie \varnothing 's (3 per span). Place additional shims at midpoints between tie \varnothing 's. Securely weld shims to top flange of support beam. Minimum shim size is 6" x flange width.

GENERAL NOTES

All structural steel shall conform to AASHTO Classification M-270 Gr. 36, unless otherwise noted.

Plan dimensions and details relative to existing plans are subject to nominal construction variations. The Contractor shall field verify existing dimensions and details affecting new construction and make necessary approved adjustments prior to construction or ordering of materials. Such variations shall not be cause for additional compensation for a change in scope of the work, however, the Contractor will be paid for the quantity actually furnished at the unit price bid for the work.

The contractor is advised that the existing PPC Deck Beams are in a deteriorated condition with reduced load carrying capacity. It is the contractor's responsibility to account for the condition of the beams when developing construction procedures.

See Section 584 of the Standard Specifications for Epoxy Grouting of Threaded Rods; Minimum embedment 9".

If the contractor's procedure for placement of beams involves placement of cranes or other heavy equipment on the bridge, a detailed procedure shall be submitted to the Engineer for approval. The procedure shall include calculations, prepared and sealed by an Illinois Licensed Structural Engineer, verifying that the equipment and procedure used will not overstress the existing beams. To distribute load to multiple beams and protect the existing surface, in all cases a double layer mat of heavy timbers shall be used at all times under crane tracks or wheels and any outriggers in the down position. If necessary, shims shall be used under the crane mat to ensure uniform contact with the underlying beams.

The cost of epoxy grouting threaded rods on the abutments and beams shall be included with Furnishing and Erecting Structural Steel.

The Contractor has the option of using used steel. See Special Provisions..

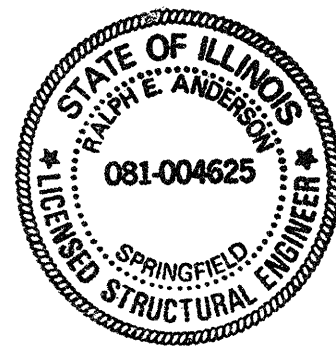
TOTAL BILL OF MATERIAL

ITEM	UNIT	QUANTITY
Furnishing and Erecting Structural Steel	Pound	2770

PLAN & ELEVATION
IL ROUTE 97 OVER
HAW CREEK TRIBUTARY
SN 048-0014

DESIGNED *Vicki H. Volk*
CHECKED *Ramin B.*
DRAWN Kyle M. Steffen
CHECKED *VHV DB*

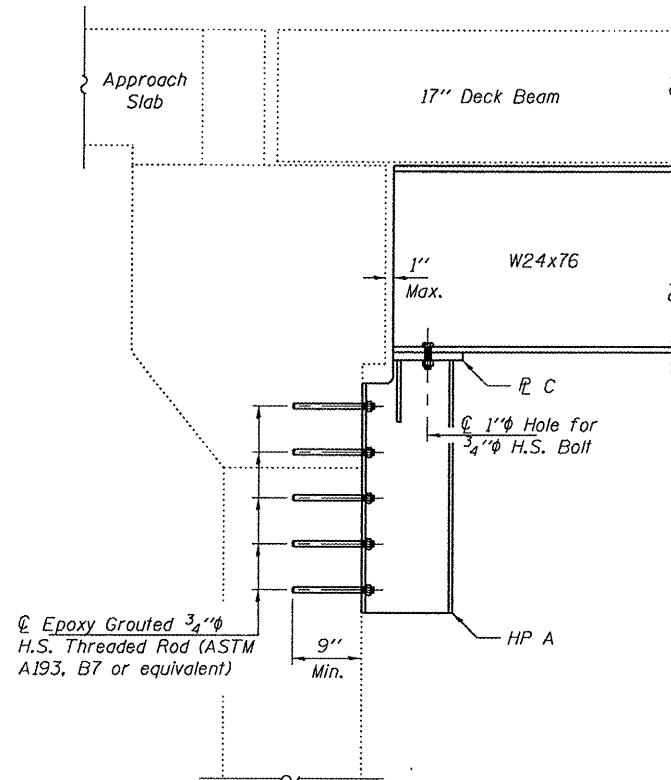
JANUARY 21, 2010
EXAMINED *Carl Engler*
PASSED *Ralph E. Anderson*
ENGINEER OF STRUCTURAL SERVICES
ENGINEER OF BRIDGES AND STRUCTURES



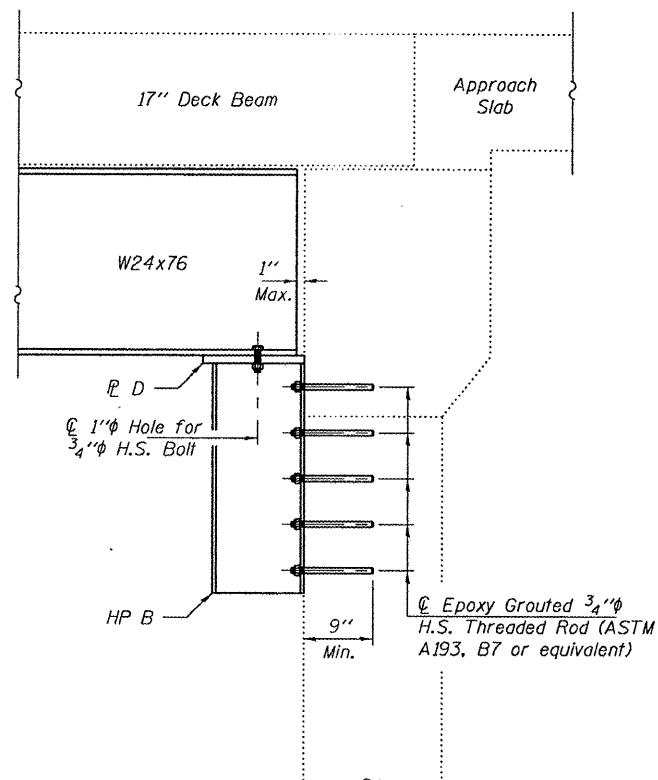
Expires: November 30, 2010

SHEET NO. 1	F.A.P. RTE.	SECTION	COUNTY	TOTAL SHEETS	SHEET NO.
2 SHEETS	626	(42B)I-1	KNOX	8	7
			CONTRACT NO. 68938		
FED. ROAD DIST. NO.		ILLINOIS	FED. AID PROJECT		

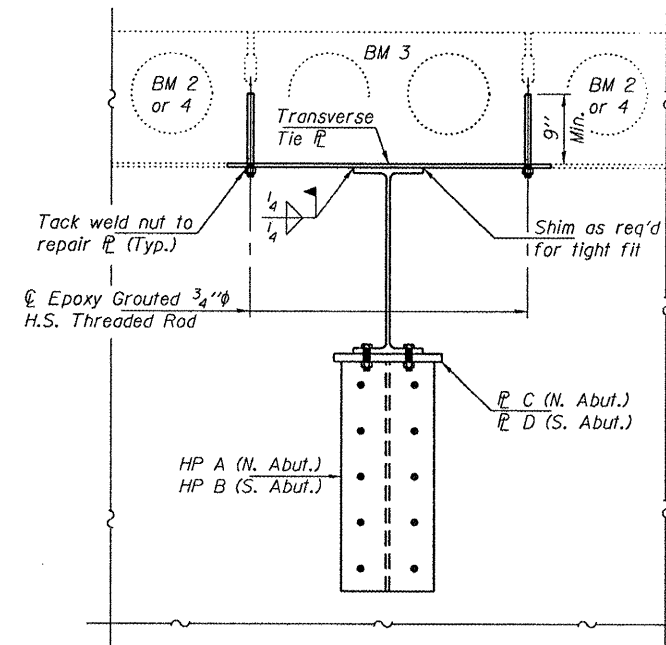
STATE OF ILLINOIS
DEPARTMENT OF TRANSPORTATION



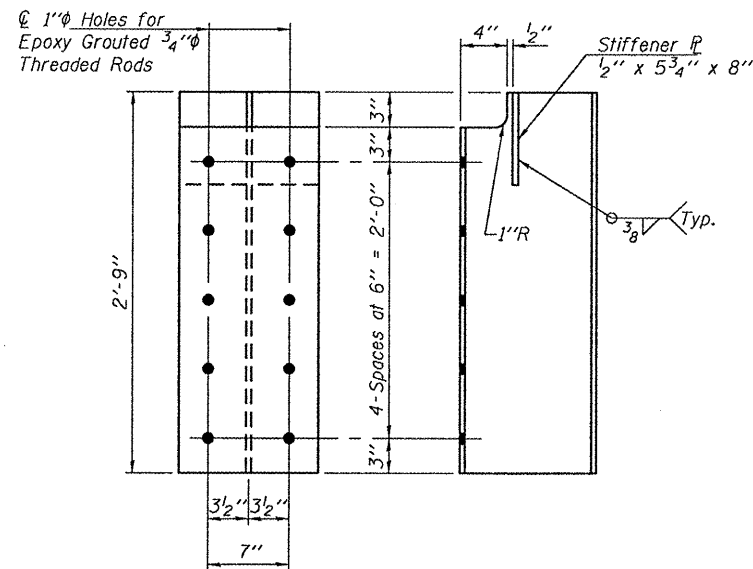
SECTION A-A



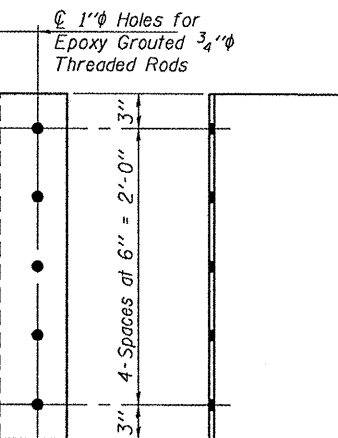
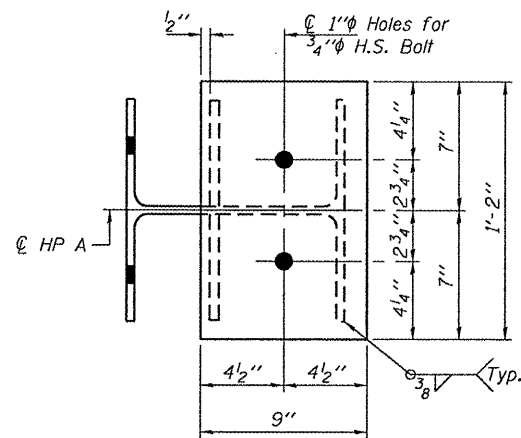
SECTION B-B



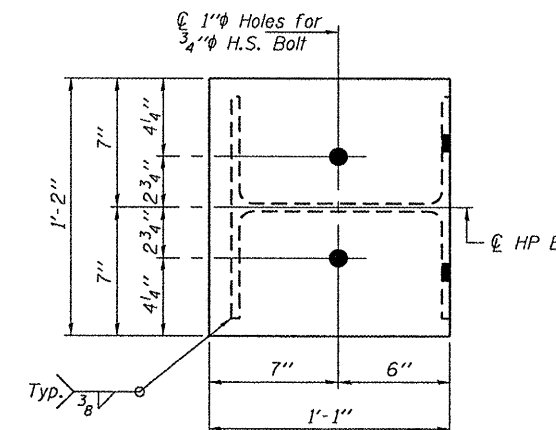
SECTION C-C



HP A
HP12x53 x 2'-9"
(1 Required)



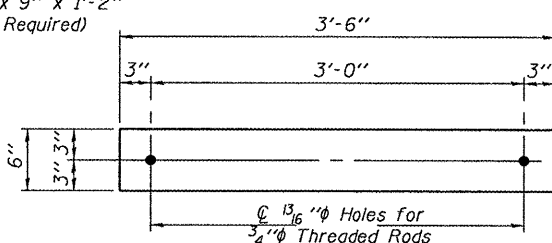
HP B
HP12x53 x 2'-6"
(1 Required)



HP B
HP12x53 x 2'-6"
(1 Required)

HP A
HP12x53 x 2'-9"
(1 Required)

HP B
HP12x53 x 2'-6"
(1 Required)



TRANSVERSE TIE R
R 1/2" x 6" x 3'-6"
(3 Required)

DESIGNED	VHV
CHECKED	DAB
DRAWN	Kyle M. Steffen
CHECKED	VHV DAB

JANUARY 21, 2010
EXAMINED *Carl Proyer*
ENGINEER OF STRUCTURAL SERVICES
PASSED *Ralph E. Anderson*
ENGINEER OF BRIDGES AND STRUCTURES

REPAIR DETAILS
IL ROUTE 97 OVER
HAW CREEK TRIBUTARY
SN 048-0014

SHEET NO. 2 2 SHEETS	F.A.P. RTE.	SECTION	COUNTY	TOTAL SHEETS	SHEET NO.
	626	(42B)I-1	KNOX	8	8
			CONTRACT NO. 68938		
FED. ROAD DIST. NO.		ILLINOIS	FED. AID PROJECT		