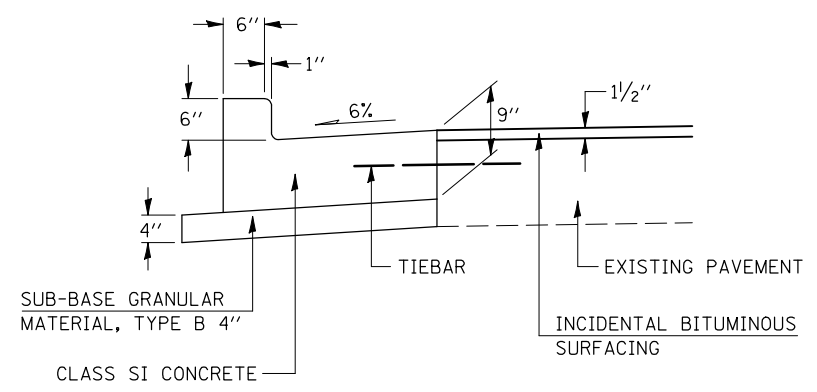
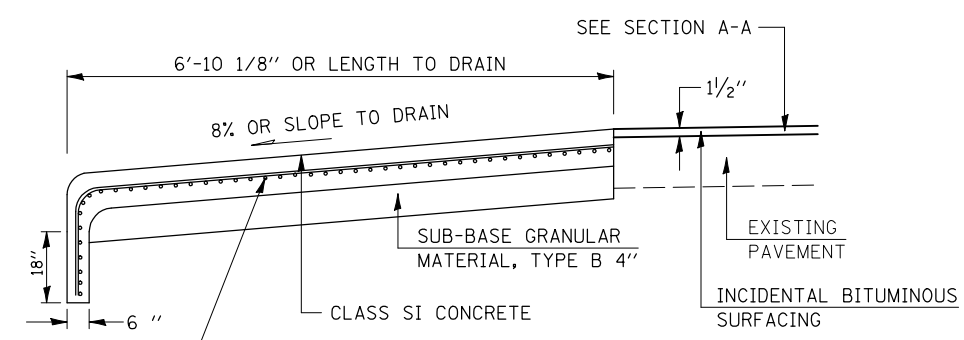


DETAIL OF EXPANSION JOINT

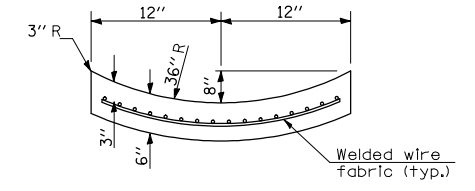


SECTION A-A

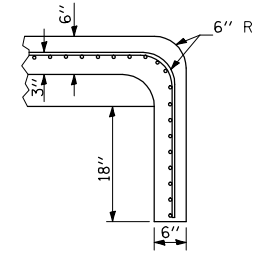
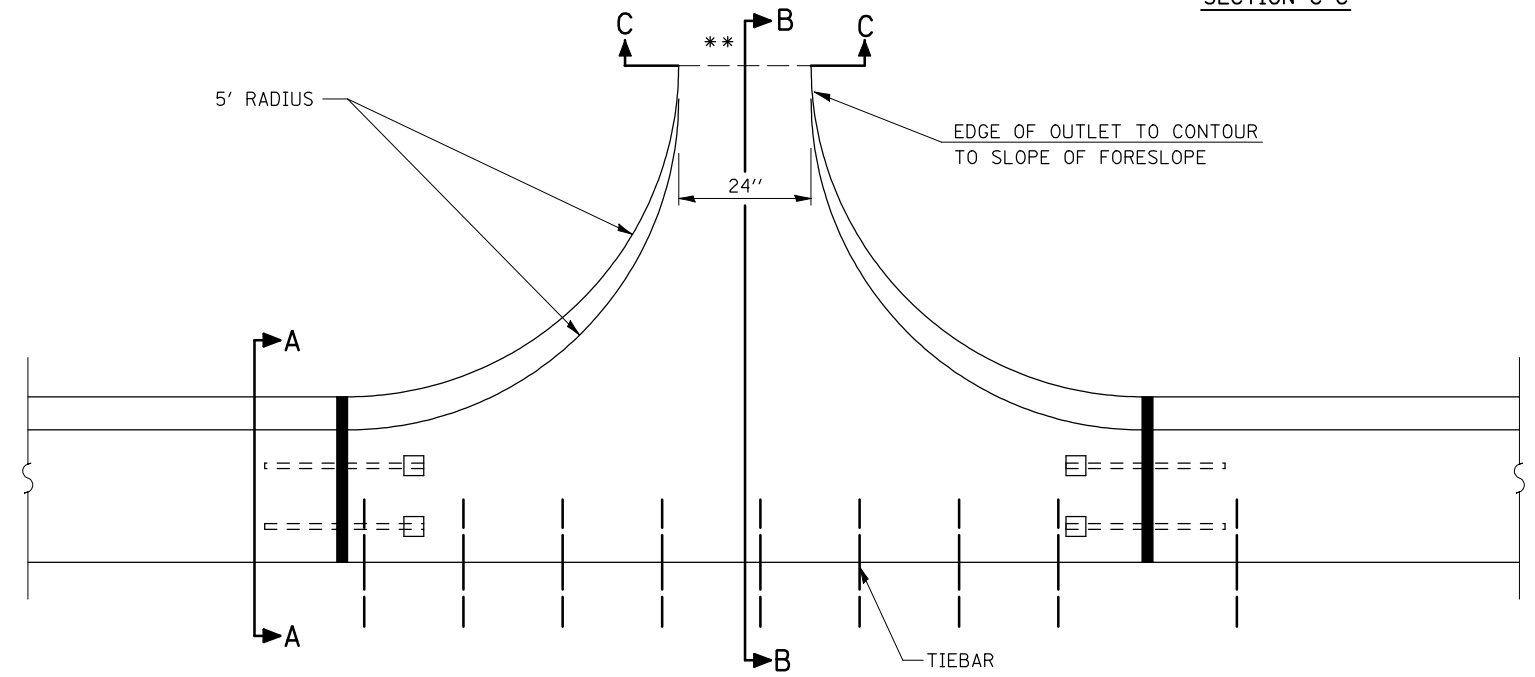


SECTION B-B

Welded wire fabric (not less than 2.83 kg/m (58 lbs./100 sq. ft.).



SECTION C-C



**** SECTION AT END OF OUTLET**

GENERAL NOTES

1. CLASS SI CONCRETE SHALL BE USED THROUGHOUT. A TOTAL OF 0.80 CU YD OF CLASS SI CONCRETE.
2. TIE BARS SHALL BE NO. 6 AT 24" CENTERS UNLESS OTHERWISE SHOWN.
3. **OUTLET (SPECIAL)** SHALL BE TIED TO PAVEMENT IN ACCORDANCE WITH DETAILS FOR LONGITUDINAL CONSTRUCTION JOINTS SHOWN ON STANDARD 420001.
4. THIS WORK SHALL BE PAID FOR AT THE CONTRACT UNIT PRICE PER EACH FOR **OUTLET (SPECIAL)** WHICH PRICE SHALL INCLUDE ALL LABOR AND MATERIAL AS SPECIFIED AND NO ADDITIONAL COMPENSATION SHALL BE ALLOWED.

FILE NAME =	USER NAME = bowerml	DESIGNED - <i>MLB</i>	REVISED -	STATE OF ILLINOIS DEPARTMENT OF TRANSPORTATION	DETAIL OF OUTLET (SPECIAL) AT STATION 1+38.58, 29.61 RT			F.A.P. RTE.	SECTION	COUNTY	TOTAL SHEETS	SHEET NO.
ct:\pwwork\pwwid\BOWERML\dms85036\70234\detai1.s.dgn	DRAWN - <i>MLB</i>	REVISED -	749					120RS-3	*	55	38	
PLOT SCALE = 40.0000' / IN.	CHECKED -	REVISED -	CONTRACT NO. 70234									
PLOT DATE = 12/4/2009	DATE - 10/27/09	REVISED -	ILLINOIS FED. AID PROJECT									
				SCALE: N/A	SHEET NO.	OF SHEETS	STA.	TO STA.				

•DOUGLAS & MOULTRIE