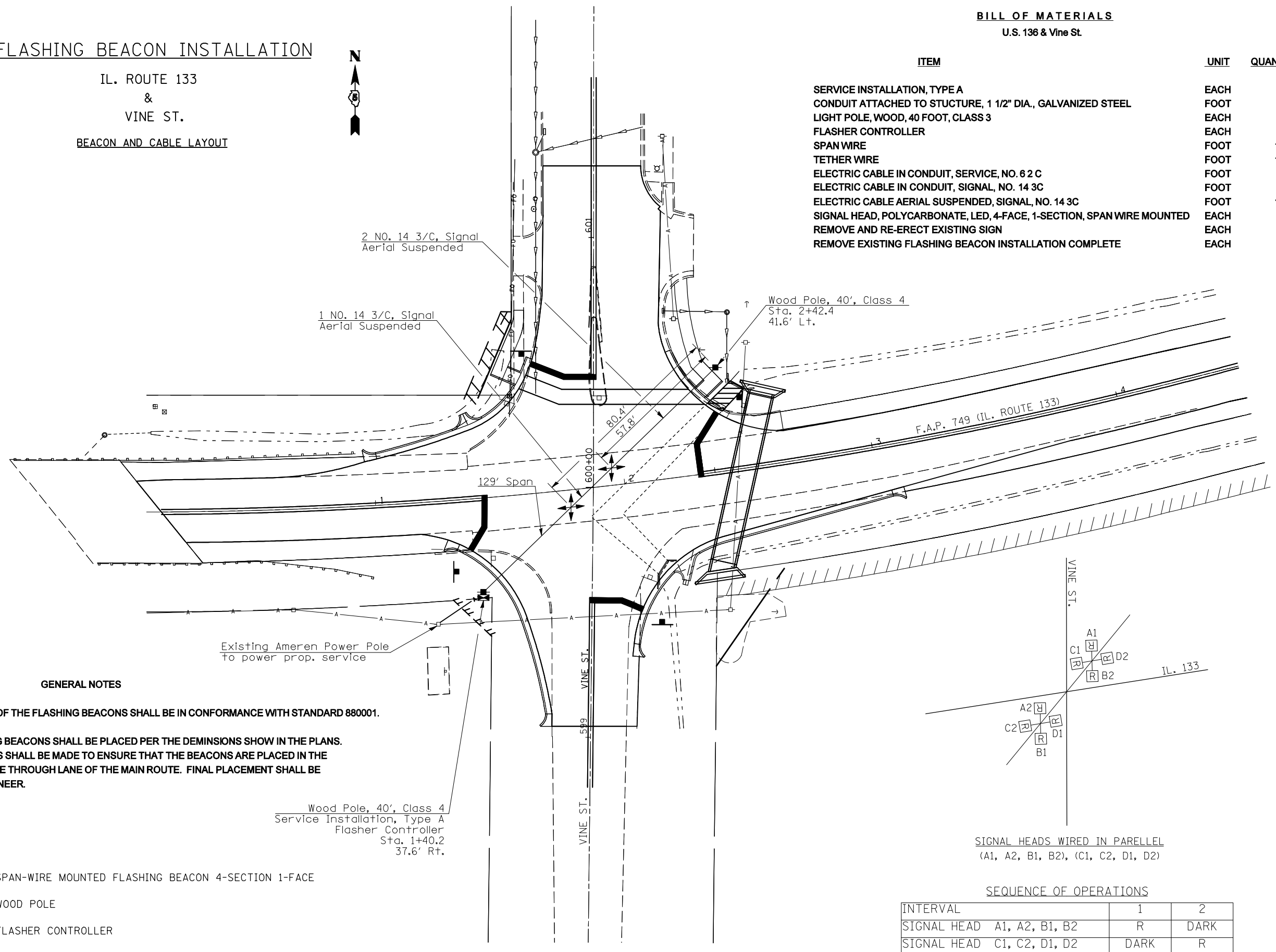


FLASHING BEACON INSTALLATION

IL. ROUTE 133
&
VINE ST.
BEACON AND CABLE LAYOUT



BILL OF MATERIALS U.S. 136 & Vine St.

ITEM	UNIT	QUANTITY
SERVICE INSTALLATION, TYPE A	EACH	1
CONDUIT ATTACHED TO STRUCTURE, 1 1/2" DIA., GALVANIZED STEEL	FOOT	20
LIGHT POLE, WOOD, 40 FOOT, CLASS 3	EACH	2
FLASHER CONTROLLER	EACH	1
SPAN WIRE	FOOT	129
TETHER WIRE	FOOT	129
ELECTRIC CABLE IN CONDUIT, SERVICE, NO. 6 2 C	FOOT	25
ELECTRIC CABLE IN CONDUIT, SIGNAL, NO. 14 3C	FOOT	50
ELECTRIC CABLE AERIAL SUSPENDED, SIGNAL, NO. 14 3C	FOOT	125
SIGNAL HEAD, POLYCARBONATE, LED, 4-FACE, 1-SECTION, SPAN WIRE MOUNTED	EACH	2
REMOVE AND RE-ERECT EXISTING SIGN	EACH	4
REMOVE EXISTING FLASHING BEACON INSTALLATION COMPLETE	EACH	1

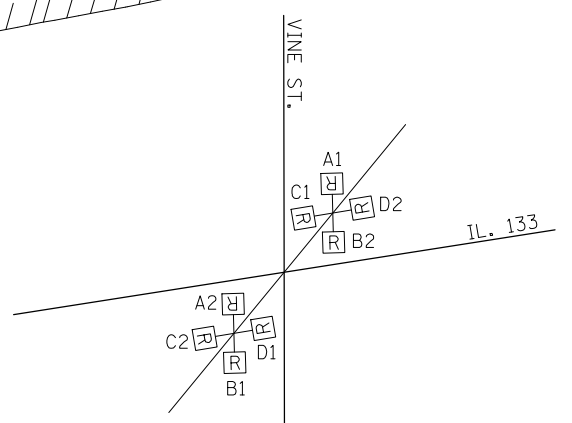
GENERAL NOTES

1. INSTALLTION OF THE FLASHING BEACONS SHALL BE IN CONFORMANCE WITH STANDARD 880001.
2. THE FLASHING BEACONS SHALL BE PLACED PER THE DEMINSIONS SHOW IN THE PLANS. ADJUSTMENTS SHALL BE MADE TO ENSURE THAT THE BEACONS ARE PLACED IN THE MIDDLE OF THE THROUGH LANE OF THE MAIN ROUTE. FINAL PLACEMENT SHALL BE PER THE ENGINEER.

LEGEND

- PROPOSED SPAN-WIRE MOUNTED FLASHING BEACON 4-SECTION 1-FACE
- PROPOSED WOOD POLE
- PROPOSED FLASHER CONTROLLER
- EXISTING WOOD UTILITY POLE

Wood Pole, 40', Class 4
Service Installation, Type A
Flasher Controller
Sta. 1+40.2
37.6' Rt.



SIGNAL HEADS WIRED IN PARELLEL
(A1, A2, B1, B2), (C1, C2, D1, D2)

SEQUENCE OF OPERATIONS

INTERVAL	1	2
SIGNAL HEAD A1, A2, B1, B2	R	DARK
SIGNAL HEAD C1, C2, D1, D2	DARK	R

FILE NAME =	USER NAME = bowerml	DESIGNED -	REVISED -
ct:\pw\work\PIWIDOT\BOWERML\dms85036\70234\deta1s.dgn		DRAWN -	REVISED -
		CHECKED -	REVISED -
		DATE -	REVISED -

STATE OF ILLINOIS
DEPARTMENT OF TRANSPORTATION

DETAIL OF FLASHING BEACON INSTALLATION

SCALE: N/A SHEET NO. OF SHEETS STA. TO STA.

F.A.P. RTE.	SECTION	COUNTY	TOTAL SHEETS	SHEET NO.
749	120RS-3	*	55	41
CONTRACT NO. 70234				
ILLINOIS FED. AID PROJECT				