

* 115+3=118

F.A.I. ROUTE:	SECTION	COUNTY	TOTAL SHEETS	SHEET NO.
57	(21-28,21-10-29,10-30)RS-1	* CHAMPAIGN & DOUGLAS	115	1
FED. ROAD DIST. NO.	ILLINOIS	CONTRACT NO. 70251		

STATE OF ILLINOIS
DEPARTMENT OF TRANSPORTATION

DIVISION OF HIGHWAYS

**PROPOSED
HIGHWAY PLANS**

F.A.I ROUTE 57 (I 57)
SECTION (21-28,21-10-29,10-30)RS-1
PROJECT IM-057-5(194)21Z
CHAMPAIGN & DOUGLAS COUNTY(S)

FOR INDEX OF SHEETS, SEE SHEET NO. 2
FOR SUMMARY OF QUANTITIES, SEE SHEET NO. 5-9

<p>STRUCTURE PAVING OMISSIONS</p> <p>NB SN 021-2008 STA. 552+92.12 TO STA. 556+91.12 SB SN 021-2009 STA. 552+92.12 TO STA. 556+91.12 NB SN 021-2010 STA. 560+45.13 TO STA. 563+05.65 SB SN 021-2011 STA. 560+95.93 TO STA. 563+55.29 NB SN 010-0200 STA. 938+49.13 TO STA. 942+86.00 SB SN 010-0201 STA. 937+82.50 TO STA. 942+18.30 NB SN 010-0198 STA. 117+83.61 TO STA. 119+05.37 SB SN 010-0199 STA. 117+91.34 TO STA. 119+13.10</p>	<p>STRUCTURE REPAIRS</p> <p>NB SN 021-2010 STA. 562+00.00 (A) SB SN 021-2011 STA. 562+00.00 (A) NB SN 010-0198 STA. 118+50.00 (B) SB SN 010-0199 STA. 118+50.00 (B)</p>
--	---

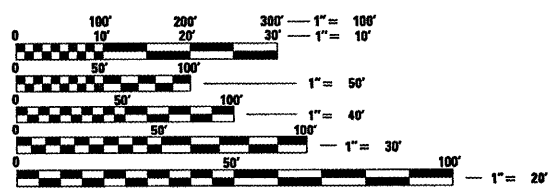
SEE GENERAL NOTES FOR ADDITIONAL STRUCTURE INFORMATION

CURRENT TRAFFIC DATA

F. A. I. ROUTE 57

2009 ADT =	20,350
PC % =	64.9
SU % =	4.9
MU % =	30.2

DESIGN DESIGNATION
INTERSTATE



FULL SIZE PLANS HAVE BEEN PREPARED USING STANDARD ENGINEERING SCALES. REDUCED SIZED PLANS WILL NOT CONFORM TO STANDARD SCALES. IN MAKING MEASUREMENTS ON REDUCED PLANS, THE ABOVE SCALES MAY BE USED.

J.U.L.I.E.
JOINT UTILITY LOCATION INFORMATION FOR EXCAVATION
1-800-892-0123
OR 811 (BLOOMINGTON TOWNSHIP)

PROJECT ENGINEER: KEVIN TRAPP
SQUAD LEADER: JEFF SHERER
PHONE: (217)465-4181
CONTRACT NO. 70251

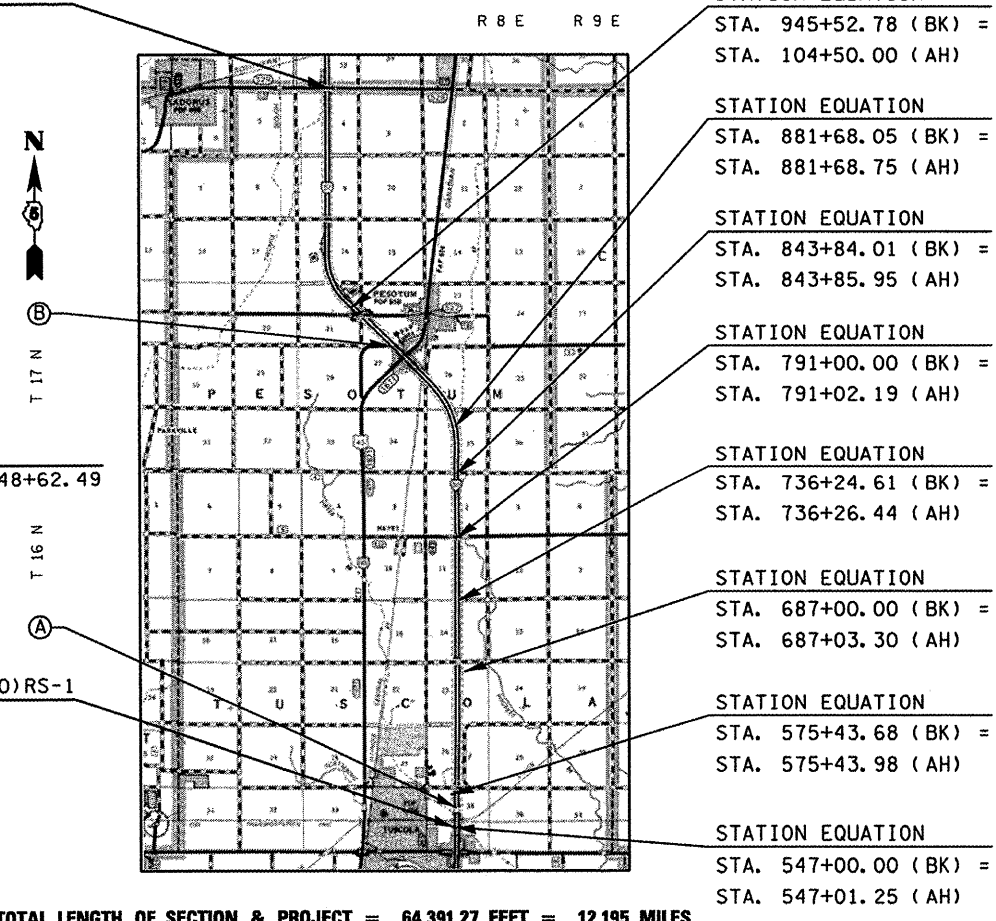
C-95-093-02

**0.3 MI N OF US 36 TO SADORUS RD
RESURFACING (INT-2ND) BRIDGE REPAIR**

SECTION (21-28, 21-10-29, 10-30)RS-1
ENDS STA. 350+00.00

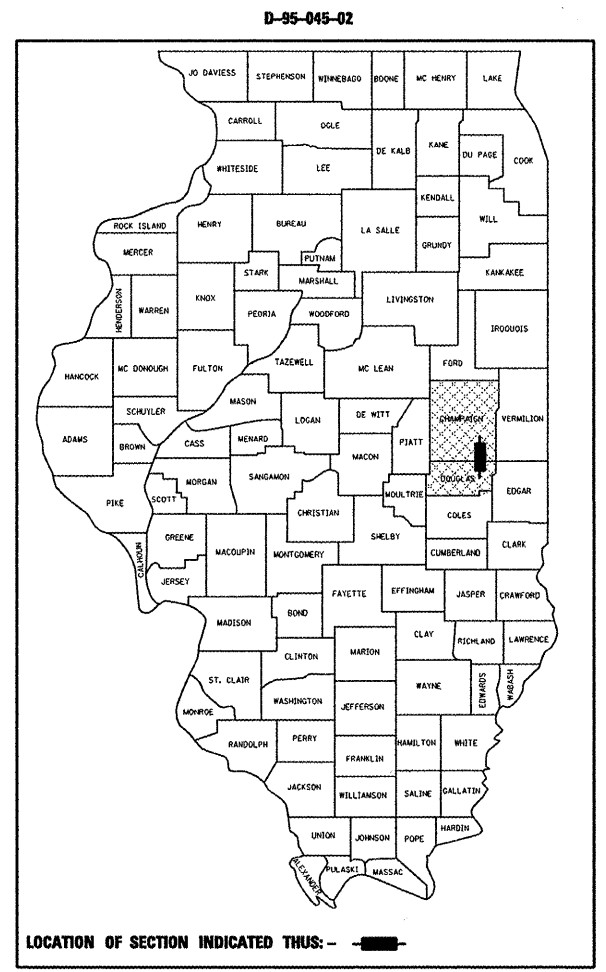
CHAMPAIGN COUNTY
DOUGLAS COUNTY STA. 848+62.49

SECTION (21-28, 21-10-29, 10-30)RS-1
BEGINS STA. 547+00.00



- STATION EQUATION
STA. 945+52.78 (BK) =
STA. 104+50.00 (AH)
- STATION EQUATION
STA. 881+68.05 (BK) =
STA. 881+68.75 (AH)
- STATION EQUATION
STA. 843+84.01 (BK) =
STA. 843+85.95 (AH)
- STATION EQUATION
STA. 791+00.00 (BK) =
STA. 791+02.19 (AH)
- STATION EQUATION
STA. 736+24.61 (BK) =
STA. 736+26.44 (AH)
- STATION EQUATION
STA. 687+00.00 (BK) =
STA. 687+03.30 (AH)
- STATION EQUATION
STA. 575+43.68 (BK) =
STA. 575+43.98 (AH)
- STATION EQUATION
STA. 547+00.00 (BK) =
STA. 547+01.25 (AH)

TOTAL LENGTH OF SECTION & PROJECT = 64,391.27 FEET = 12.195 MILES
NET LENGTH OF SECTION & PROJECT = 63,173.12 FEET = 11.965 MILES



STATE OF ILLINOIS
DEPARTMENT OF TRANSPORTATION
DIVISION OF HIGHWAYS

SUBMITTED 12/16 20 09

Joseph E. Covey
DEPUTY DIRECTOR OF HIGHWAYS, REGION THREE ENGINEER

Scott E. Stitt P.E. / *JD*
ENGINEER OF DESIGN AND ENVIRONMENT

Christine M. Reed / *RD*
DIRECTOR OF HIGHWAYS, CHIEF ENGINEER

**PRINTED BY THE AUTHORITY
OF THE STATE OF ILLINOIS**