

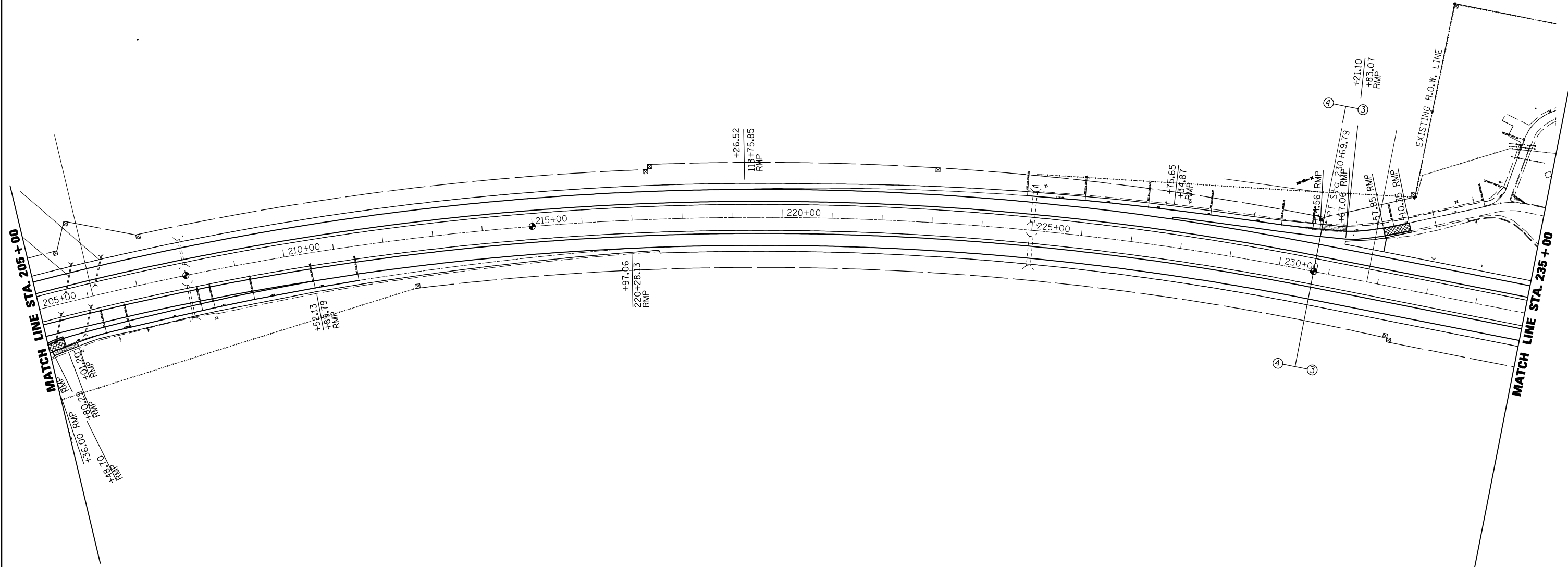


SEC. 21, T. 17 N., R. 8 E.

-  HMA SURF REM BUTT JOINT (SEE DESIGN DETAILS)
-  MILLING TRANS 3/4" - 5" (SEE DESIGN DETAILS)



•CHAMPAIGN & DOUGLAS

FILE NAME =	USER NAME = shererjm	DESIGNED - JMS	REVISED -
ct:\pwork\pwidot\shererjm\d0134546\d570251-shr-plan_100.dgn		DRAWN - JMS	REVISED -
	PLOT SCALE = 200.0000' / IN.	CHECKED -	REVISED -
	PLOT DATE = 12/15/2009	DATE - 110309	REVISED -

**STATE OF ILLINOIS  
DEPARTMENT OF TRANSPORTATION**

<b>PLAN VIEW</b>		
SCALE:	SHEET NO. 18 OF 22 SHEETS	STA. 205+00.00 TO STA. 235+00.00

F.A.I. RTE.	SECTION	COUNTY	TOTAL SHEETS	SHEET NO.
57	(21-28,21-10-29,10-30)RS-1	*	115	62
CONTRACT NO. 70251				
ILLINOIS FED. AID PROJECT				