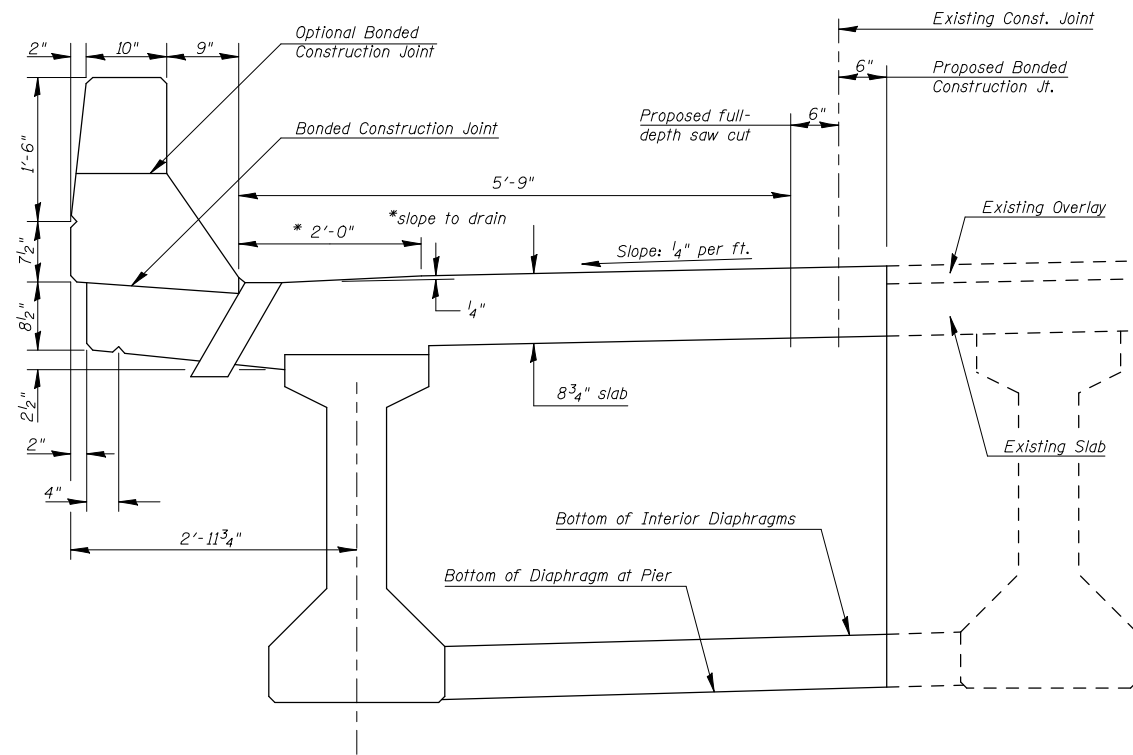
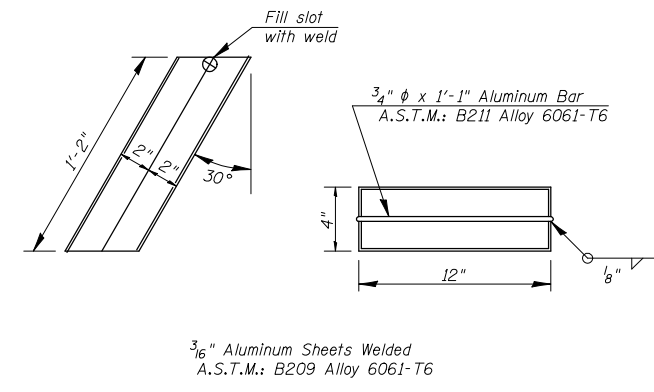


SUPERSTRUCTURE DETAILS

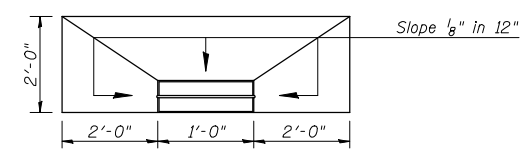
S.N. 021-2011



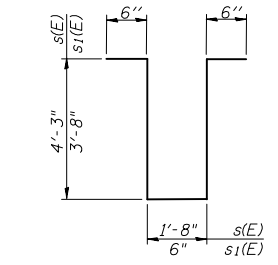
SECTION AT REPAIR AREA



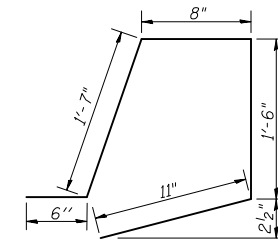
FLOOR DRAIN
(outside dimensions shown)



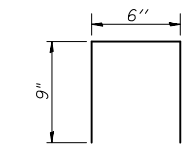
SLOPING DETAIL AT DRAIN



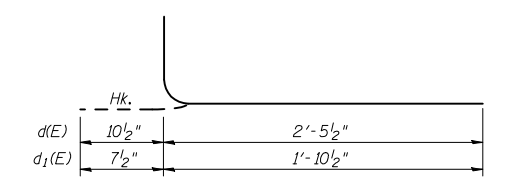
BARS s(E) & s1(E)



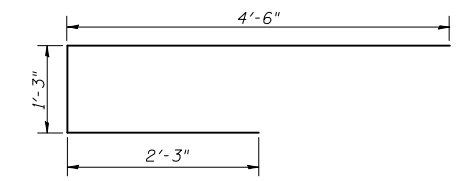
BAR c(E)



BAR d2(E)



BARS d(E) & d1(E)

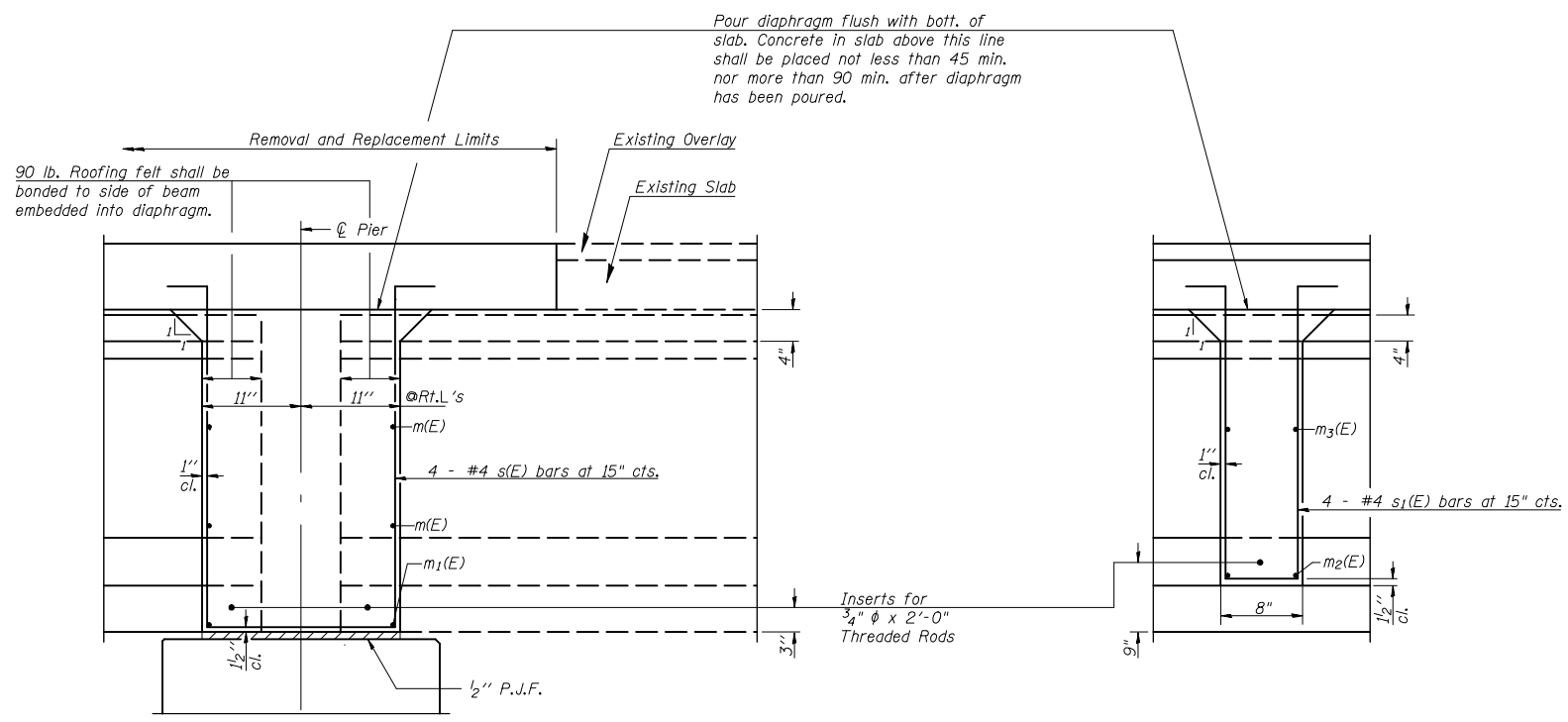


BAR x(E)

SUPERSTRUCTURE BILL OF MATERIAL

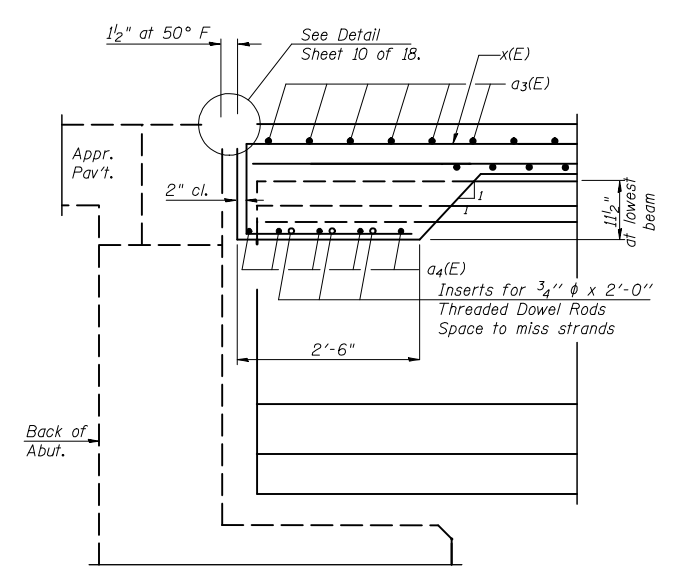
Bar	No.	Size	Length	Shape
a(E)	57	#6	7'-6"	—
a1(E)	62	#6	7'-1"	—
a2(E)	119	#6	6'-7"	—
a3(E)	6	#7	8'-6"	—
a4(E)	5	#6	4'-9"	—
b(E)	24	#5	26'-8"	—
b1(E)	33	#5	26'-8"	—
b2(E)	5	#8	10'-9"	—
b3(E)	3	#8	16'-3"	—
b4(E)	15	#5	22'-3"	—
b5(E)	5	#5	10'-9"	—
c(E)	61	#4	5'-2"	└
d(E)	76	#6	3'-4"	└
d1(E)	76	#4	2'-6"	└
d2(E)	18	#4	2'-0"	└
e(E)	16	#5	15'-5"	—
e1(E)	4	#5	10'-9"	—
m(E)	4	#4	4'-8"	—
m1(E)	2	#6	4'-0"	—
m2(E)	4	#4	3'-7"	—
m3(E)	4	#4	4'-0"	—
s(E)	4	#4	11'-2"	└
s1(E)	8	#4	8'-10"	└
x(E)	10	#6	8'-0"	└
		Reinforcement Bars, Epoxy Coated	Pound	6190
		Concrete Removal	Cu. Yds.	28.0
		Concrete Superstructure	Cu. Yds.	28.0
		Mechanical Splicers	Each	245.0

Notes:
 The s(E), s1(E) and x(E) bars shall be placed parallel to the beams. Spacing for these bars shall be at right angles to the beams.
 Cost of 90 Lb. roofing felt and 1/2" P.J.F. is included with Concrete Superstructure.
 Quantities for Floor Drains included on sheet 8 of 18.



DIAPHRAGM SECTION AT PIER

INTERIOR DIAPHRAGM SECTION (2 LOCATIONS)



SECTION AT ABUTMENT (at Rt. Ls)