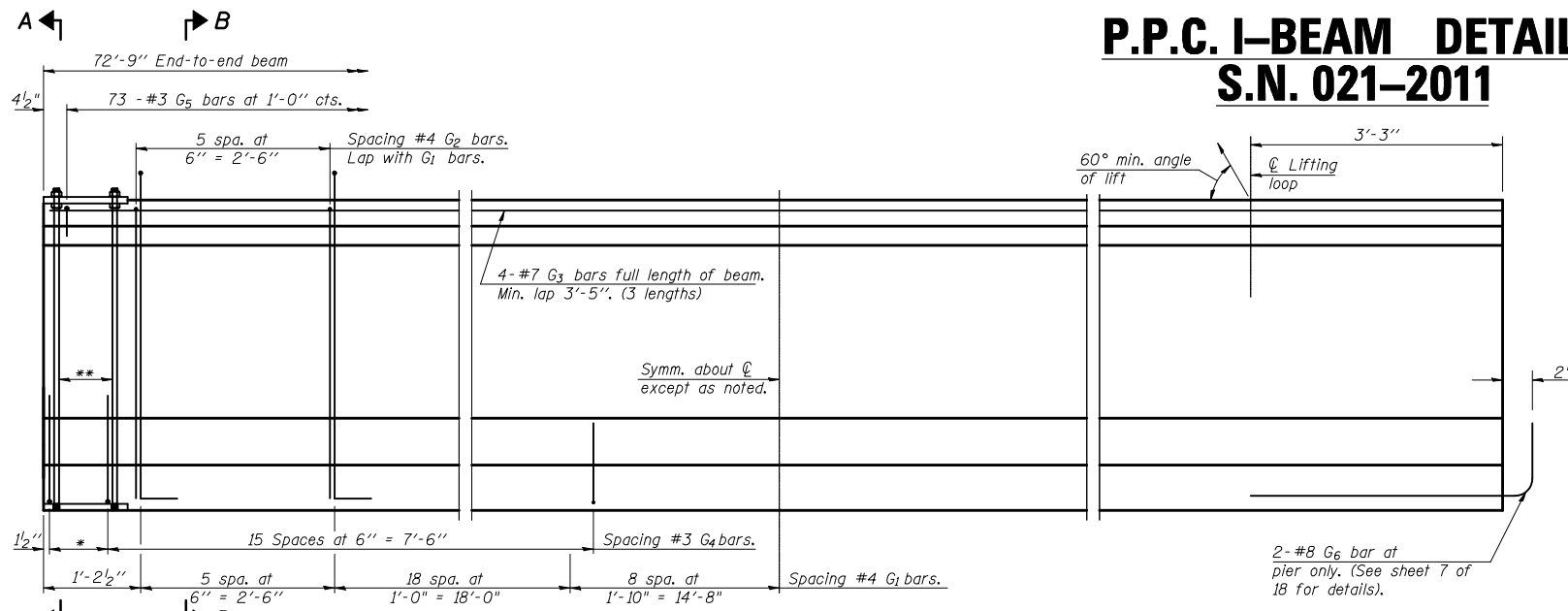


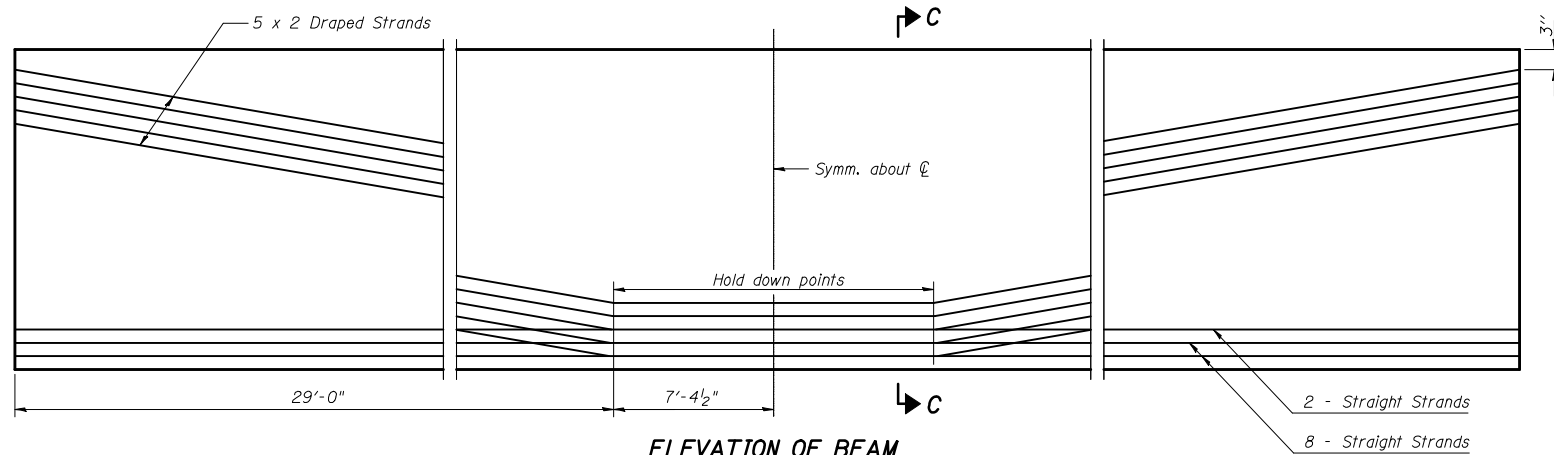
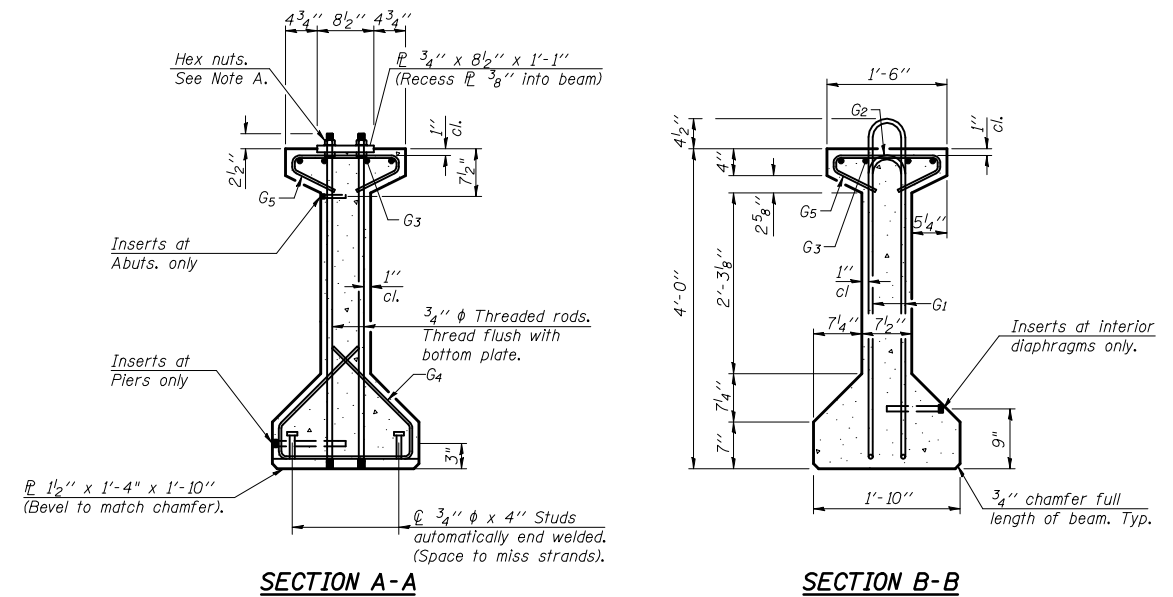
P.P.C. I-BEAM DETAILS S.N. 021-2011



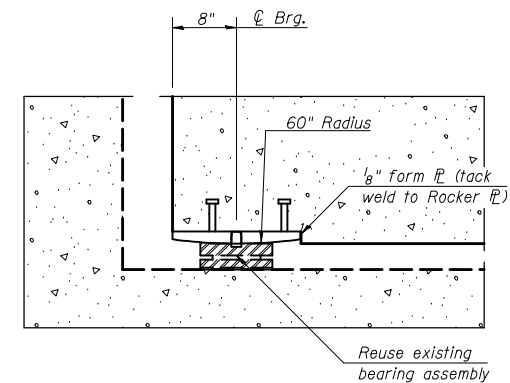
* 3 spaces at 3" = 9".
** 4-3/4" φ threaded dowel rods at 3" cts., Each Face.

ELEVATION OF BEAM
(Showing reinforcement & dimensions)

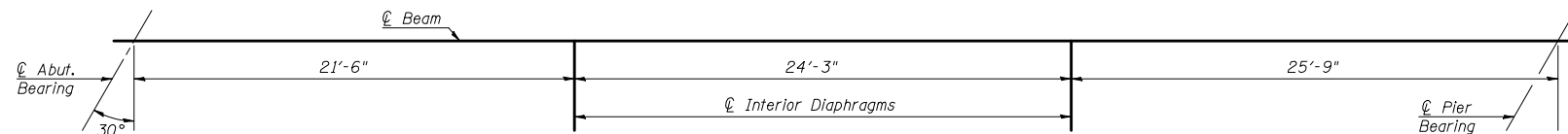
Note A:
Hex nuts (top and bottom) with lock washers (top). Only tighten sufficiently to compress lock washers.



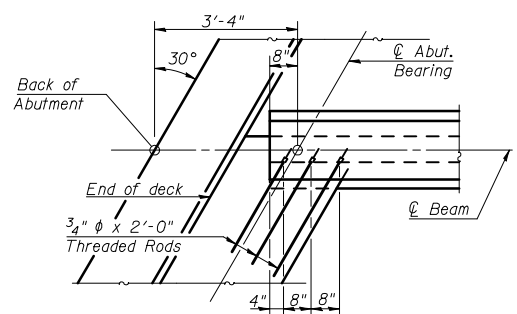
ELEVATION OF BEAM
(Showing prestressing steel)



SECTION AT ABUTMENT

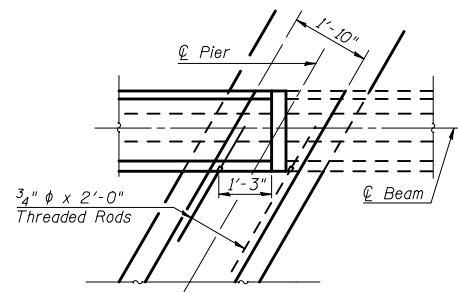


PARTIAL FRAMING PLAN
(Showing locations of interior diaphragms)



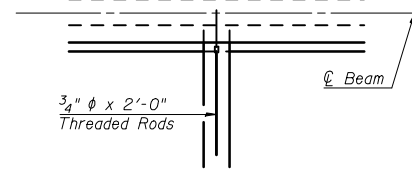
DETAIL OF ABUTMENT DIAPHRAGM

Showing placement of inserts for 3/4" φ rods at abutment



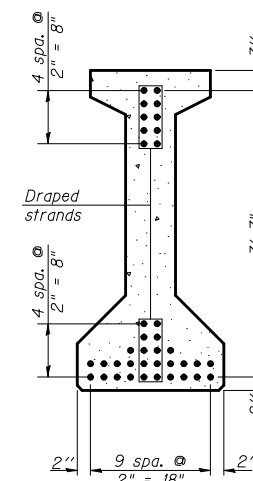
DETAIL OF PIER DIAPHRAGM

Showing placement of inserts for 3/4" φ rods at pier



DETAIL OF INTERIOR DIAPHRAGM

Showing placement of inserts for 3/4" φ rod at interior diaphragms



SECTION C-C

*****BAR LIST
ONE BEAM ONLY**

Bar	No.	Size	Length	Shape
G ₁	63	#4	9'-6"	⊔
G ₂	12	#4	7'-11"	⊔
G ₃	12	#7	26'-6"	⊔
G ₄	38	#3	5'-3"	⊔
G ₅	73	#3	2'-9"	⊔
G ₆	2	#8	5'-6"	⊔

***For information only

Notes:
See sheet 7 of 18 for additional details and Bill of Material.
Required release strength, f'ci, shall be 5,000 psi.

**48" PPC I-BEAM
STRUCTURE NO. 021-2011**

* CHAMPAIGN & DOUGLAS

FILE NAME =	USER NAME = shererjm	DESIGNED - GMS	REVISED -
ca:\pwork\pwork\PWID01\SHERERJM\d0134546\d0251-shr-structures.dgn		DRAWN - GMS	REVISED -
	PLOT SCALE = 40.0001' / IN.	CHECKED -	REVISED -
	PLOT DATE = 12/9/2009	DATE -	REVISED -

**STATE OF ILLINOIS
DEPARTMENT OF TRANSPORTATION**

**P.P.C. I-BEAM DETAILS
S.N. 021-2011**

SCALE: SHEET NO. 6 OF 18 SHEETS STA. TO STA.

F.A.I. RTE.	SECTION	COUNTY	TOTAL SHEETS	SHEET NO.
57	(21-28,21-10-29,10-30)RS-1	*	115	92
				CONTRACT NO. 70251
ILLINOIS FED. AID PROJECT				