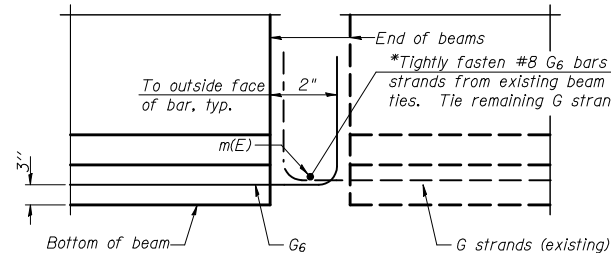
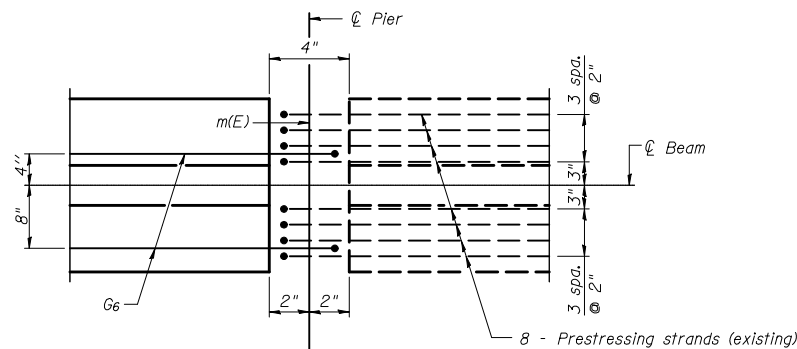


P.P.C. I-BEAM DETAILS S.N. 021-2011

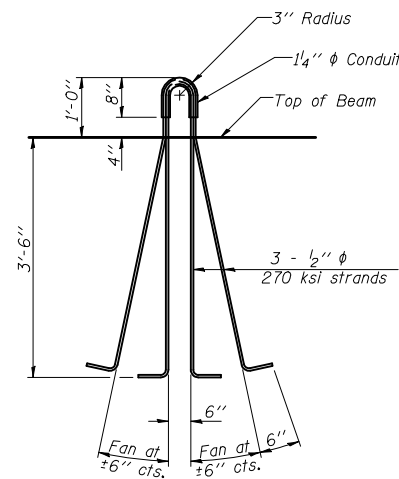
*Prestressing strands from existing beam shall be cleaned, straightened and incorporated into new construction. Any strands that are damaged during concrete removal shall be replaced with an approved bar splicer or anchorage system. Cost included with Concrete Removal.



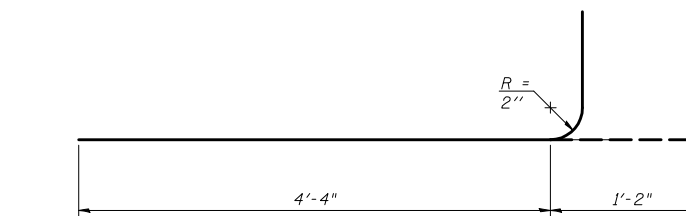
ELEVATION OF BEAM AT PIER



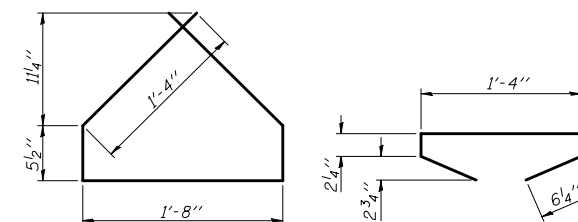
PLAN OF BEAM AT PIER



LIFTING LOOP DETAIL



BAR G6



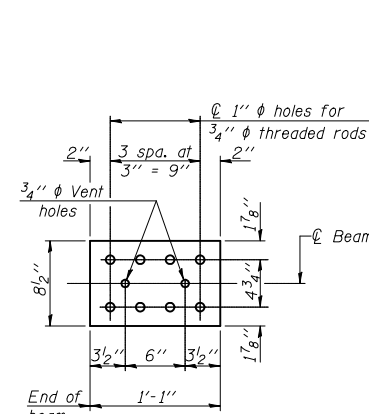
BAR G4

BAR G5

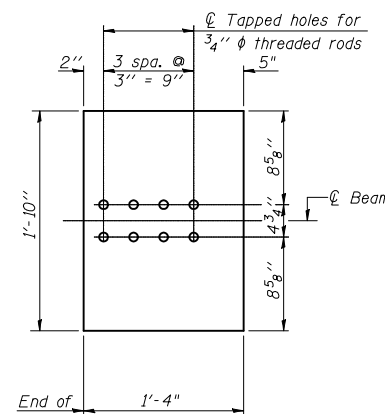
BILL OF MATERIAL

Item	Unit	Total
Furnishing and Erecting Precast Prestressed Concrete I-Beams, 48"	Ft.	73.0

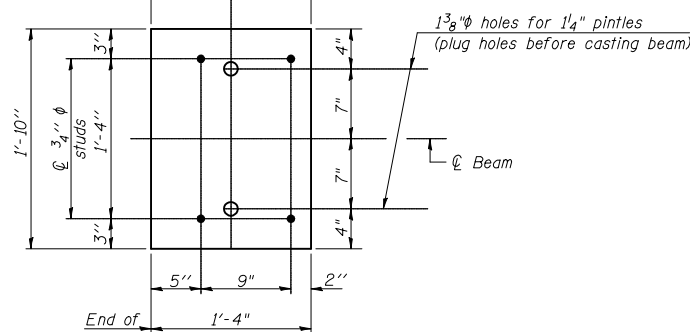
**48" PPC I-BEAM DETAILS
STRUCTURE NO. 021-2011**



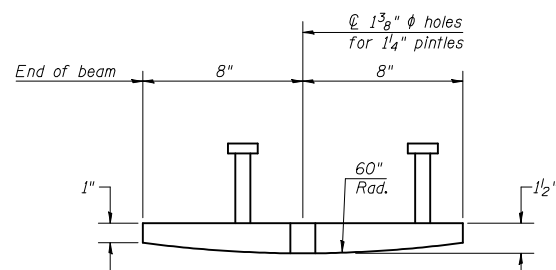
TOP PLATE



**ROCKER/BOTTOM PLATE
(Showing threaded rods)**



**ROCKER/BOTTOM PLATE
(Showing studs and pintle locations)**



ROCKER PLATE - SIDE ELEVATION

* CHAMPAIGN & DOUGLAS

FILE NAME =	USER NAME = shererjm	DESIGNED - GMS	REVISED -
ca:\pwork\pwork\PWID01\SHERERJM\d0134546\d0251-shr-structures.dgn		DRAWN - GMS	REVISED -
	PLOT SCALE = 40.0001' / IN.	CHECKED -	REVISED -
	PLOT DATE = 12/9/2009	DATE -	REVISED -

**STATE OF ILLINOIS
DEPARTMENT OF TRANSPORTATION**

**P.P.C. I-BEAM DETAILS
S.N. 021-2011**

SCALE: SHEET NO. 7 OF 18 SHEETS STA. TO STA.

F.A.I. RTE.	SECTION	COUNTY	TOTAL SHEETS	SHEET NO.
57	(21-28,21-10-29,10-30)RS-1	*	115	93
			CONTRACT NO. 70251	
ILLINOIS FED. AID PROJECT				