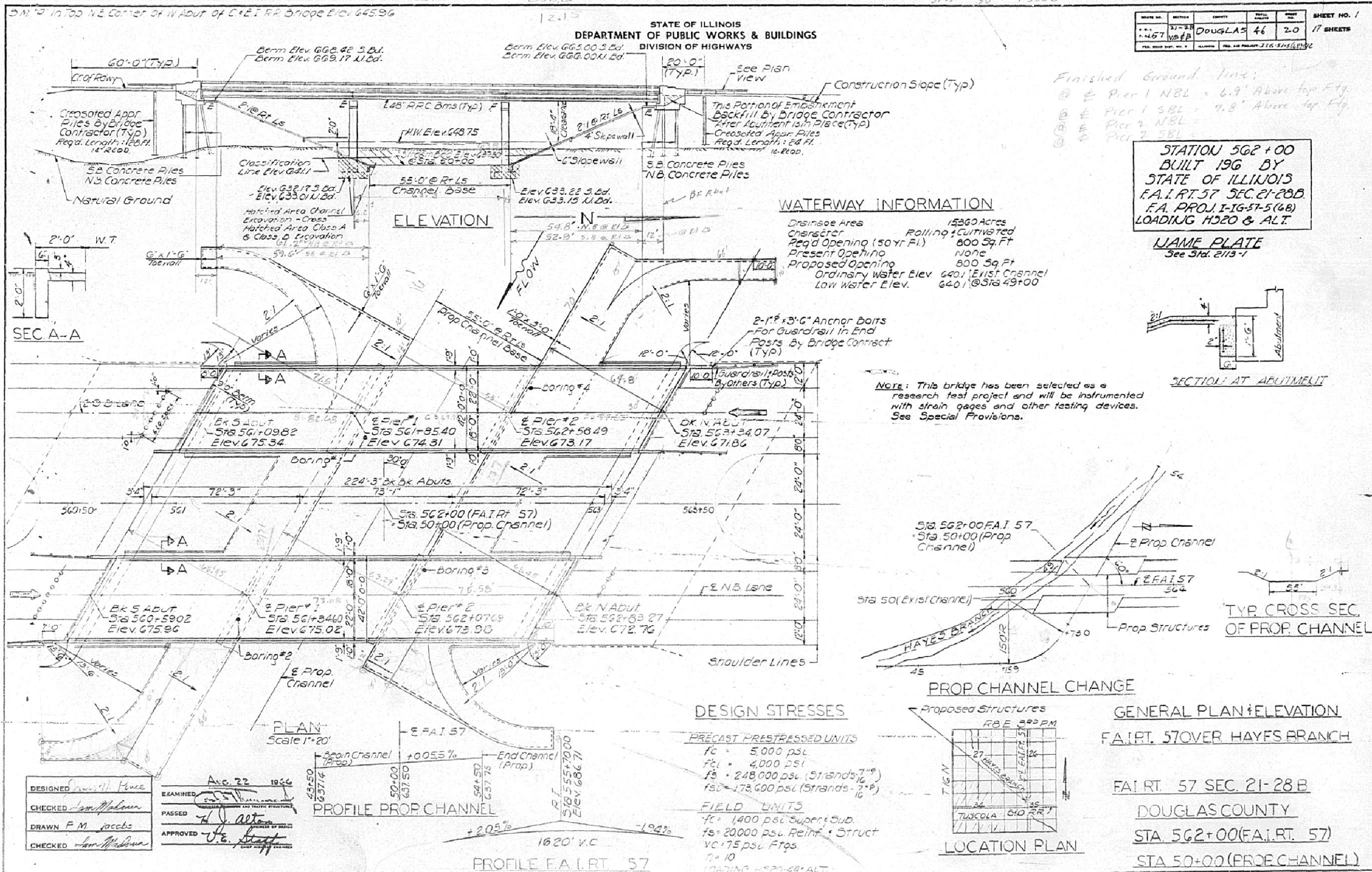


AS-BUILT PLANS FOR INFORMATION ONLY

ROUTE NO.	SECTION	COUNTY	TOTAL SHEETS	SHEET NO.
1-457	1B-1B	DOUGLAS	46	20

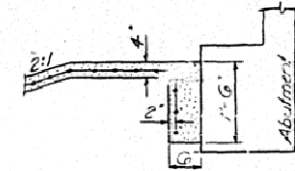
17 SHEETS



Finished Ground Line:
 @ Pier 1 NBL = 6.9' Above top Fly.
 @ Pier 1 SBL = 7.8' Above top Fly.
 @ Pier 2 NBL =
 @ Pier 2 SBL =

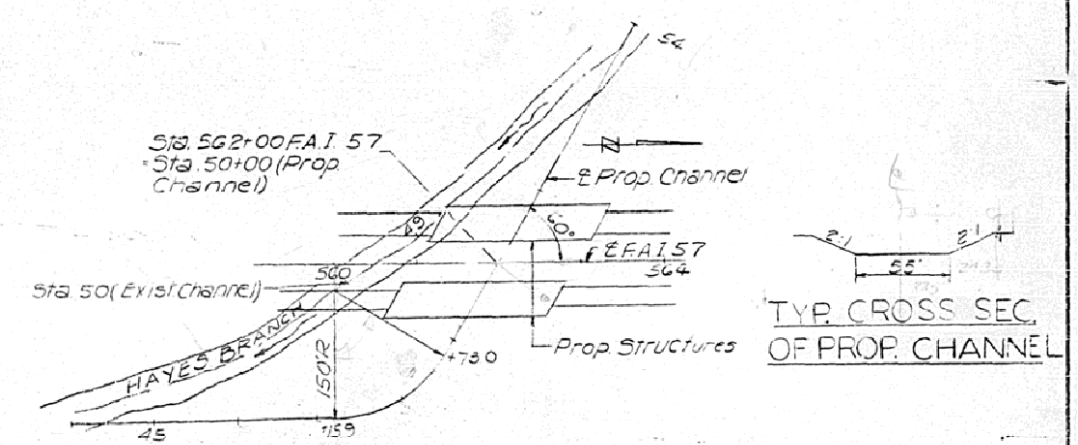
**STATION 562+00
BUILT 196 BY
STATE OF ILLINOIS
FA.I.R.T. 57 SEC. 21-28 B
LOADING HS 20 & ALT.**

NAME PLATE
See Std. 2113-1

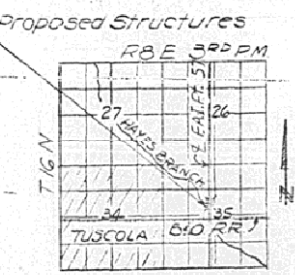


SECTION AT ABUTMENT

NOTE: This bridge has been selected as a research test project and will be instrumented with strain gages and other testing devices. See Special Provisions.



PROP CHANNEL CHANGE



DESIGNED	Aug. 22 1966
CHECKED	
DRAWN	
CHECKED	

EXAMINED	
PASSED	
APPROVED	