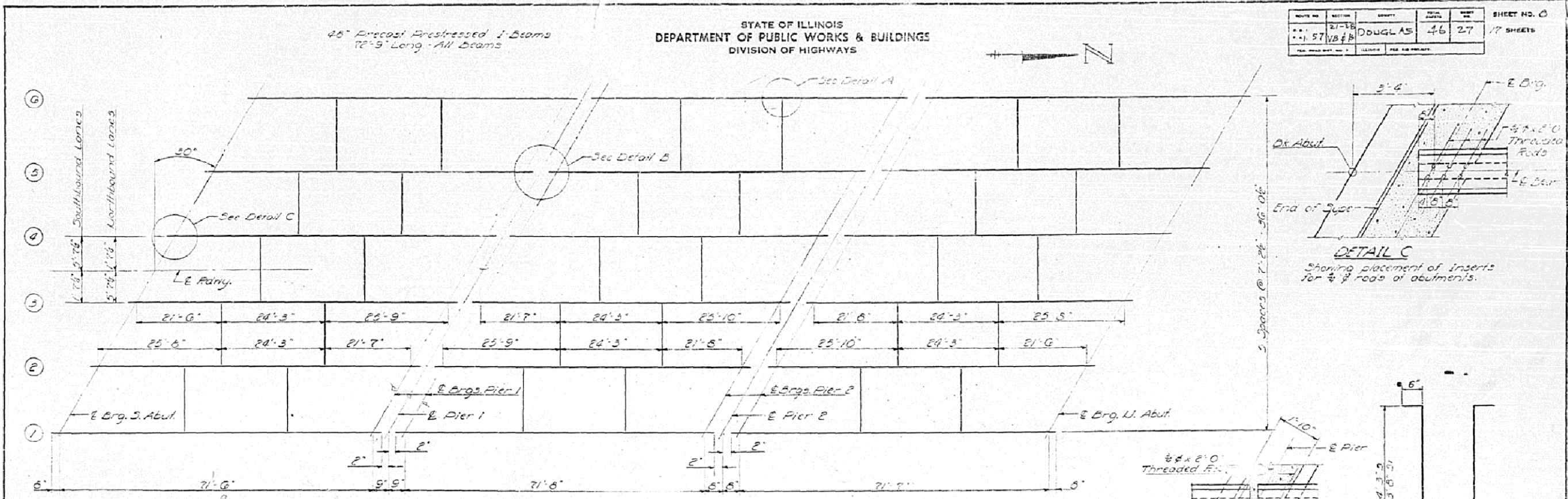


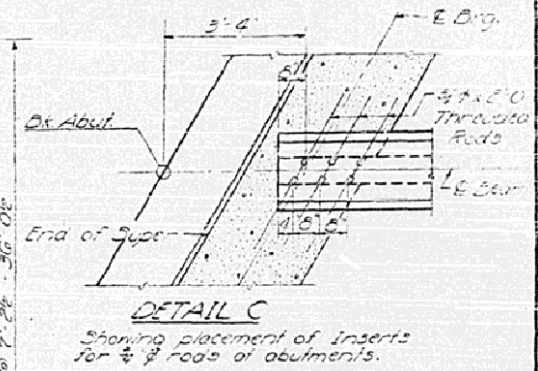
AS-BUILT PLANS FOR INFORMATION ONLY

STATE OF ILLINOIS
DEPARTMENT OF PUBLIC WORKS & BUILDINGS
DIVISION OF HIGHWAYS

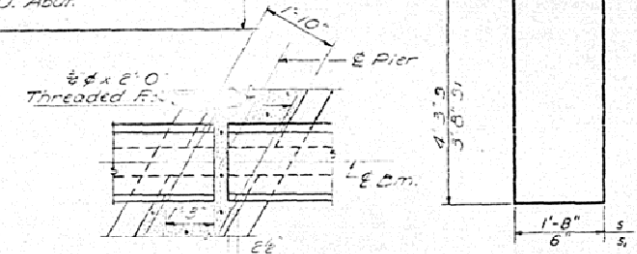
ROUTE NO.	SECTION	COUNTY	TOTAL SHEETS	SHEET NO.
57	VB#8	DOUGLAS	46	27
17 SHEETS				



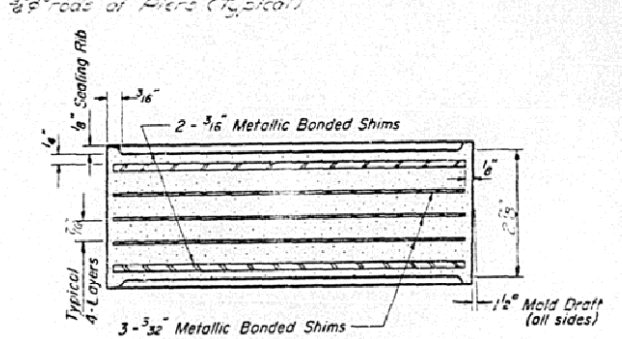
FRAMING PLAN



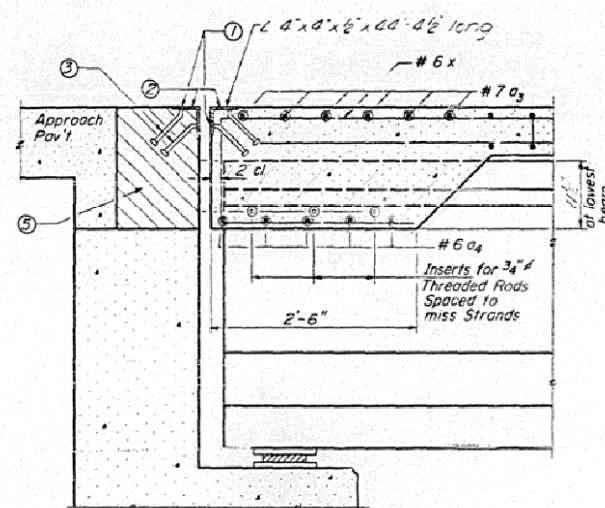
DETAIL C
Showing placement of inserts for 3/4" rods of abutments.



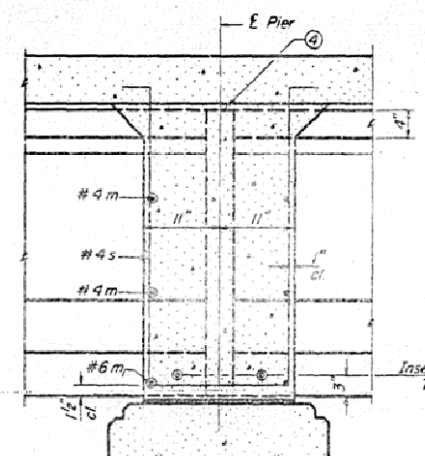
DETAIL B
Showing placement of inserts for 3/4" rods of Piers (Typical)



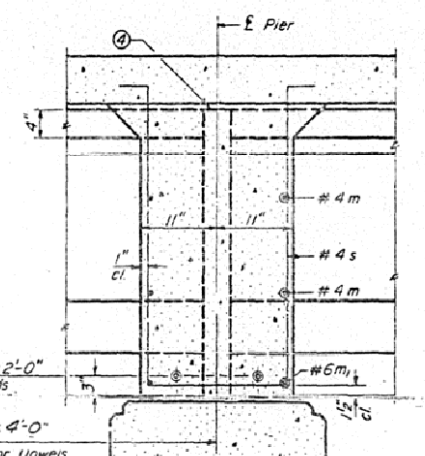
ELASTOMERIC BEARING DETAIL
See Sheet #9



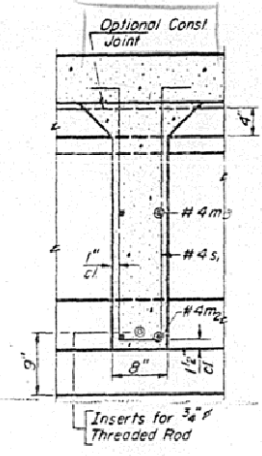
SECTION AT ABUTMENT



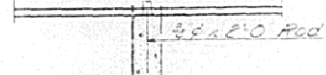
PIER 1



PIER 2



SEC. AT INT. DIAPHRAGM



DETAIL A
Showing placement of inserts for 3/4" rods of Interior Diaphragms (Typical)

DESIGNED	James M. Pence	EXAMINED	Aug. 22 1966
CHECKED	S.F.M.	PASSED	H. J. Allen
DRAWN	Wenless Jacobs	APPROVED	V. G. Staff
CHECKED	S.F.M.		

PI-2J 1-27-66

- 1) 1/8" holes at 12" cts for 3/8" bolts set on normal gage line. All bolts shall be burned, sawed or chipped off flush with the back of angles after forms are removed.
- 2) 1/8" vent holes at 12" cts set on 1/8" gage line.
- 3) 3/8" x 8" CR 1020 STL granular or solid flux filled headed studs - automatically and welded (alternate at 1'-0" cts).
- 4) Pour diaphragm flush with top of beam. Concrete in slab above this line shall be placed not less than 45 minutes nor more than 90 minutes after diaphragm has been poured.
- 5) Hatched area to be poured after Superstructure forms have been removed. Quality of Class X Concrete included with Superstructure.

Bars #3, #4; m, m1, m2, m3, s & s1 are included in Bill of Material on Sheet #9.

FRAMING DETAILS
FAIRF. 57-SEC 21-85
DOUGLAS COUNTY
Sta. 5681.00