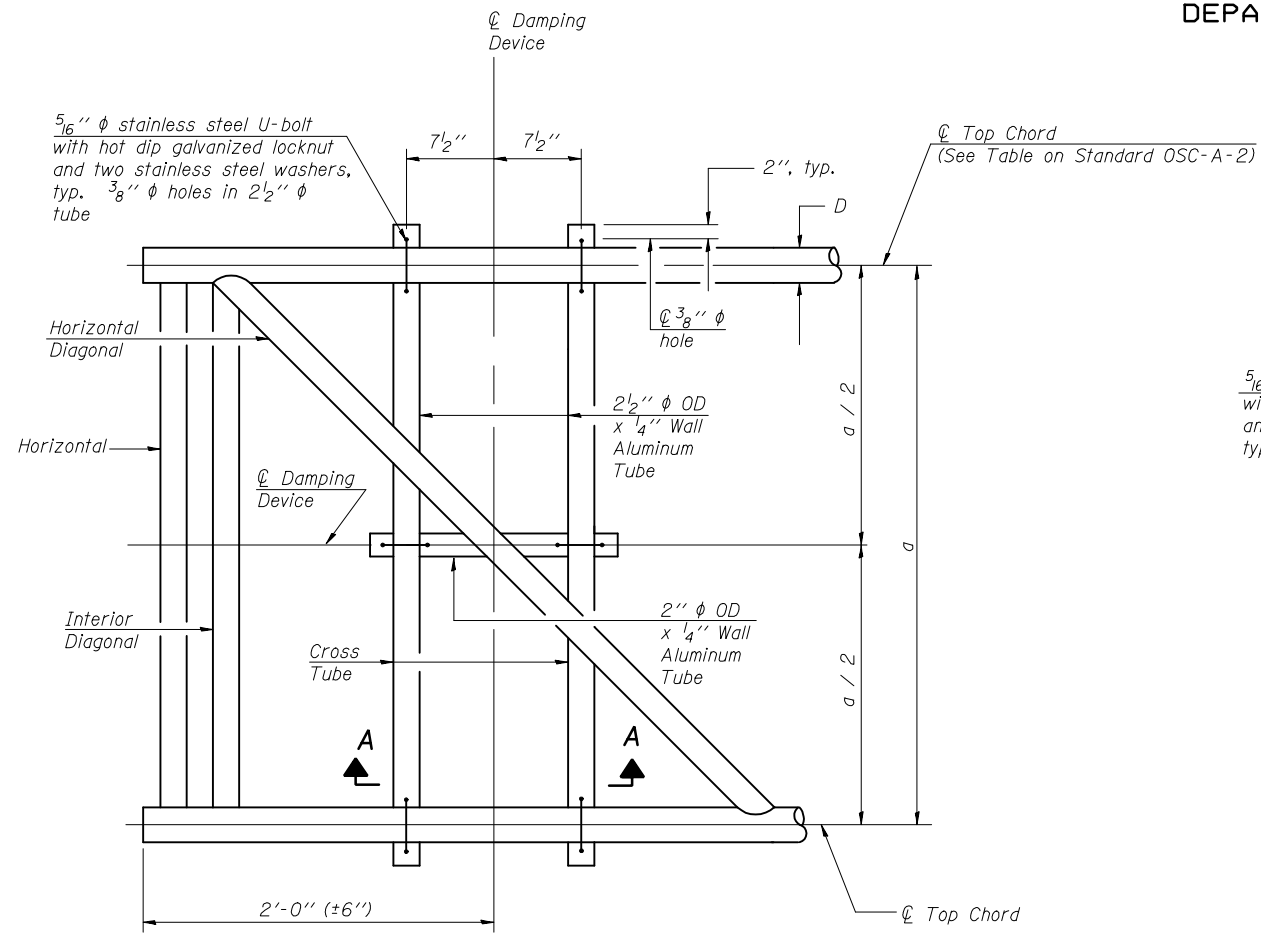
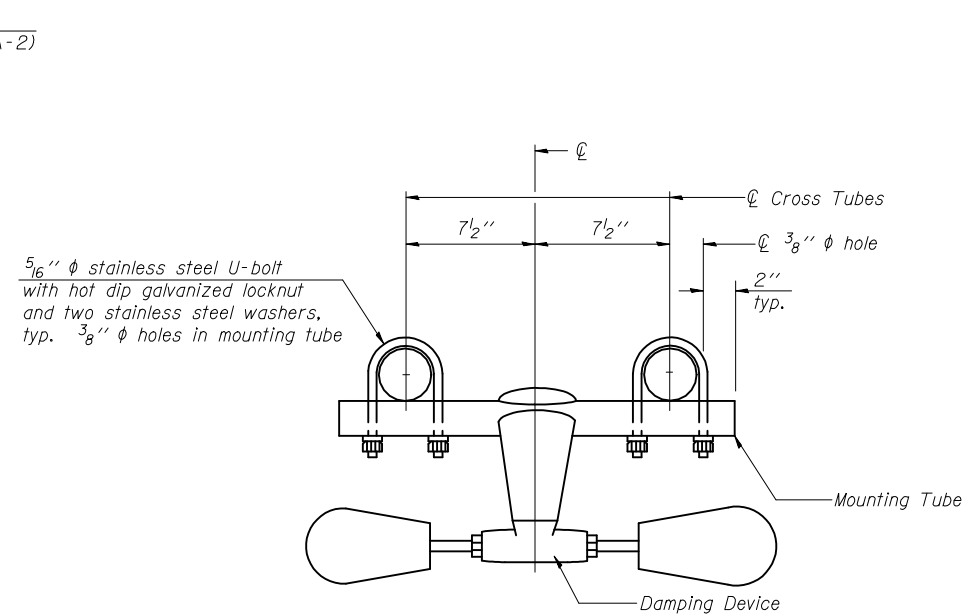


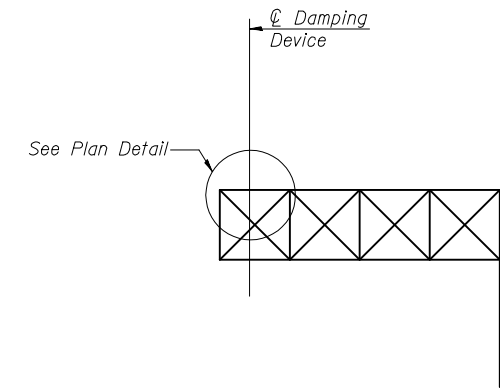
STATE OF ILLINOIS
DEPARTMENT OF TRANSPORTATION



PLAN DETAIL



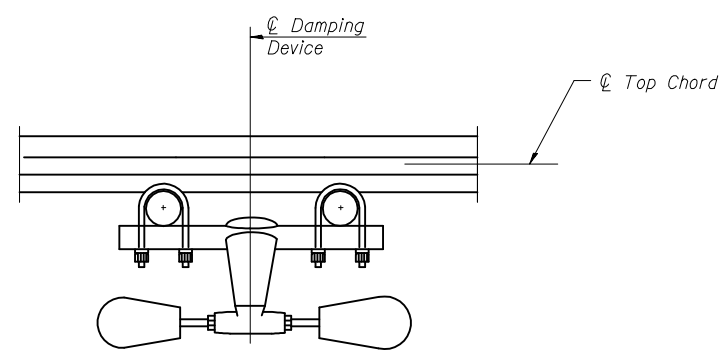
TRUSS DAMPING DEVICE CONNECTION DETAIL



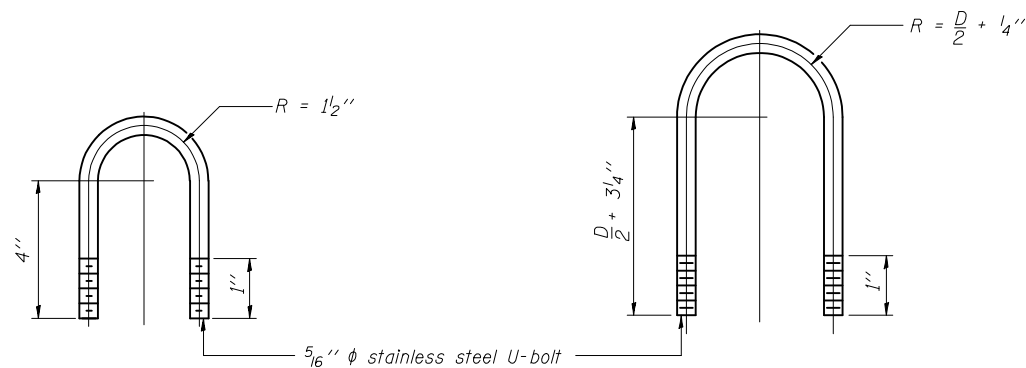
ELEVATION
Aluminum Cantilever
Sign Structure

GENERAL NOTES

- Damper: One damper per truss. (31 lbs. Stockbridge-Type Aluminum-29" minimum between ends of weights)
- Materials: Aluminum tubes shall be ASTM B221 alloy 6061 temper T6



SECTION A-A



**DAMPING DEVICE MOUNTING
TUBE U-BOLT DETAIL**
(Typical)

**TOP CHORD TO CROSS TUBE
U-BOLT DETAIL**
(Typical)

DESIGNED -	200
CHECKED -	EXAMINED
DRAWN -	PASSED
CHECKED -	ENGINEER OF BRIDGES AND STRUCTURES

OSC-A-D

12-1-08

CANTILEVER SIGN STRUCTURE DAMPING DEVICE				
*CHAMPAIGN & DOUGLAS				
SHEET NO. 3 8 SHEETS	F.A.I. RTE.	SECTION	COUNTY	TOTAL SHEETS
	57	(21-28,21-10-29,10-30)RS-1	*	115
			SHEET NO. 107	
			CONTRACT NO. 70251	
FED. ROAD DIST. NO.		ILLINOIS	FED. AID PROJECT	