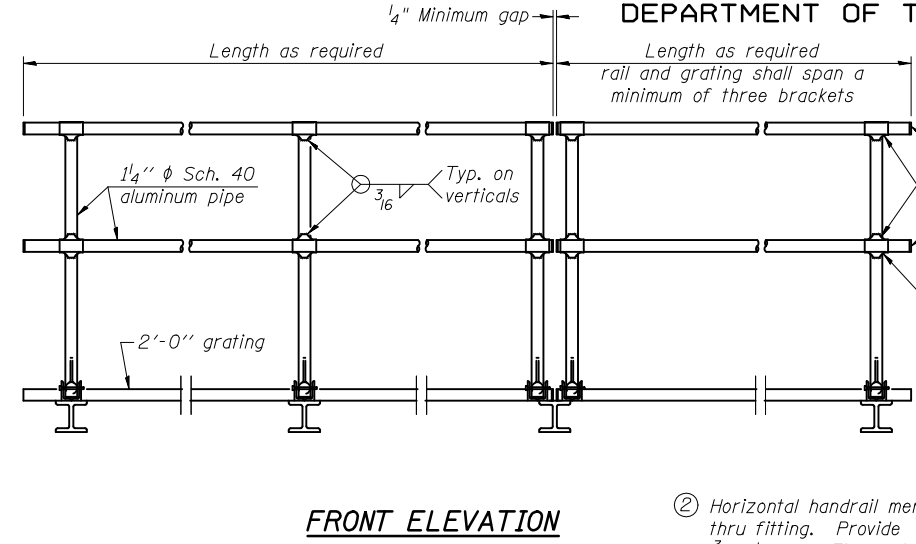
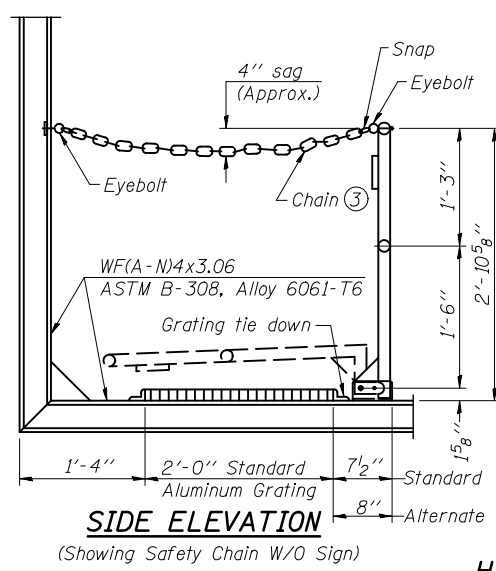
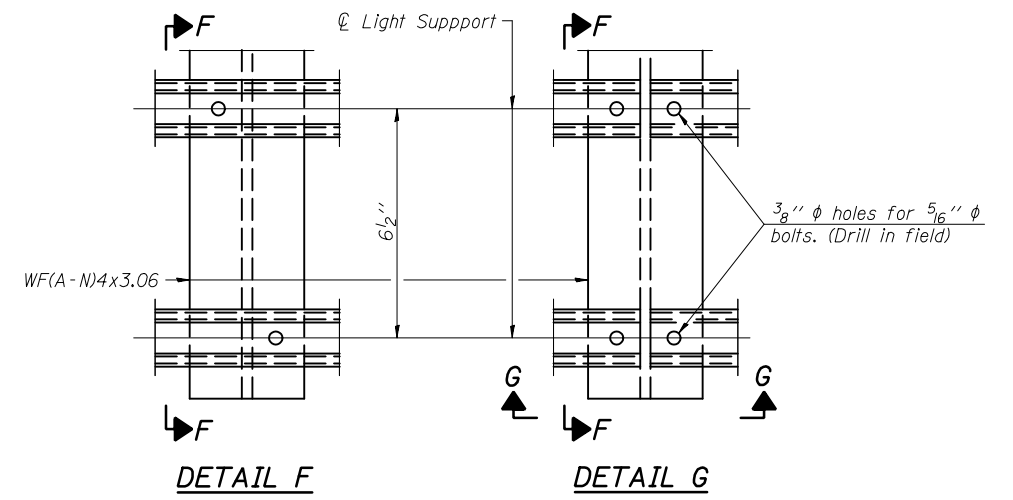


STATE OF ILLINOIS
DEPARTMENT OF TRANSPORTATION

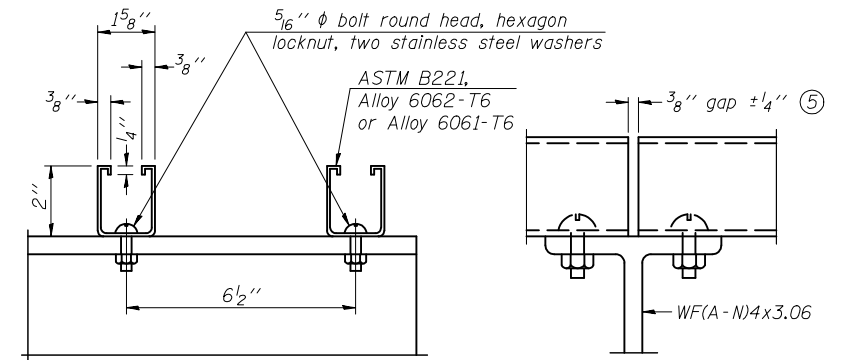
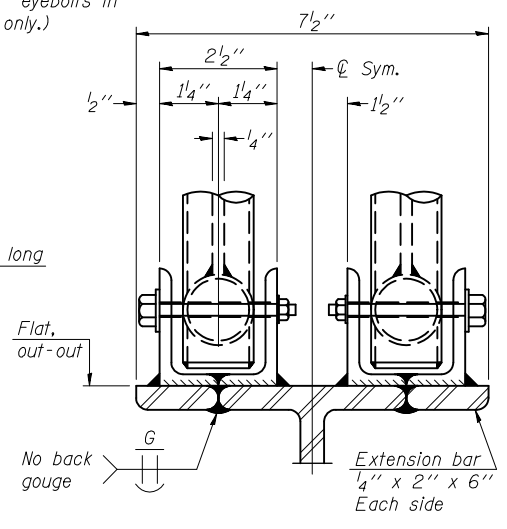
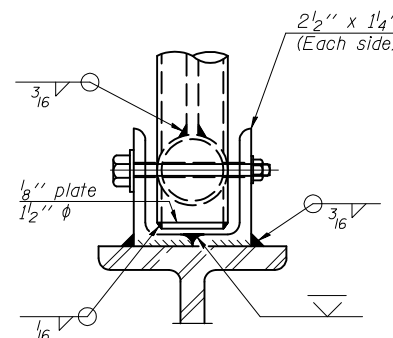
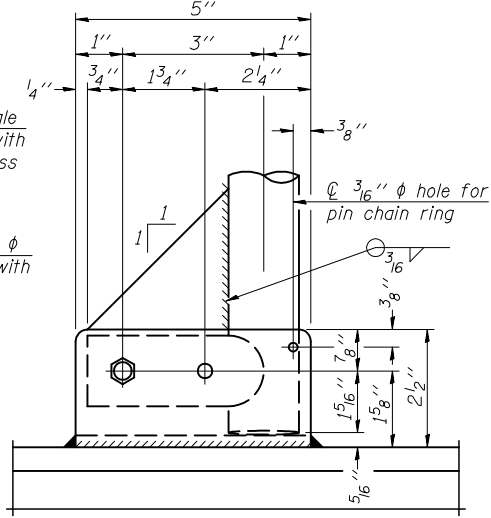
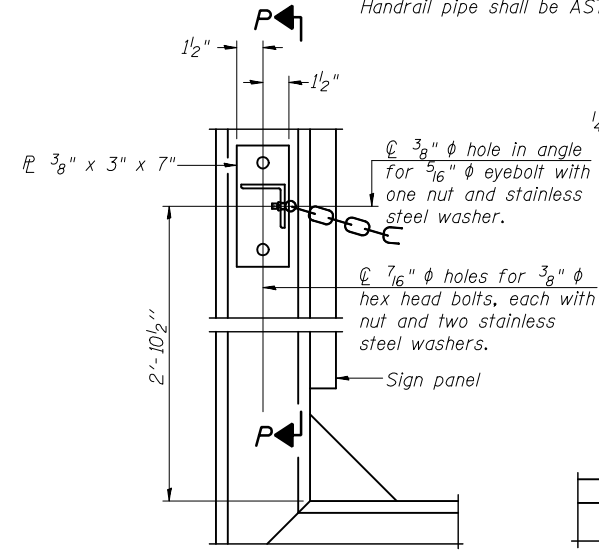


- ① Install standard force-fit end caps or weld 1/8" end plates with 1/8" c.f.w. and grind smooth. (All rail ends)
- ② Horizontal handrail member shall be continuous thru fitting. Provide 7/16" hole in fitting for 3/8" bolt. Field drill 1/16" hole in horizontal rail member. Provide locknut and two stainless steel washers for bolt. (Use 5/16" eyebolts in 7/16" holes on top rail at ends only.)



HANDRAIL DETAILS

Handrail pipe shall be ASTM B241 or B429, Alloy 6063-T6 or Alloy 6061-T6.

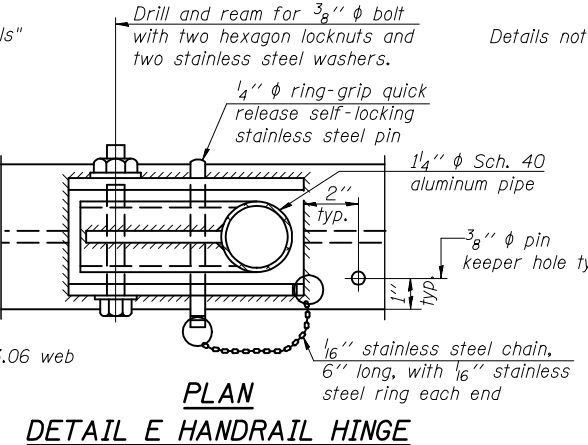
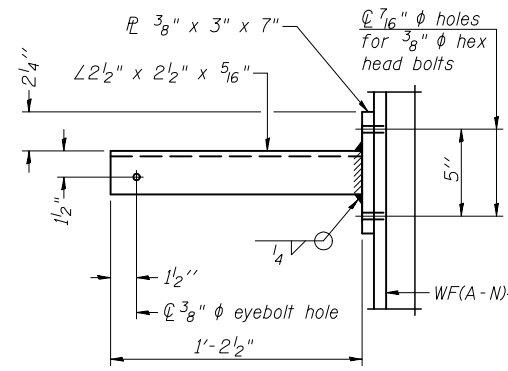


SECTION F-F and SECTION G-G LIGHTING FIXTURE MOUNTS (IF REQUIRED)

- ⑤ Field cut ends of light support channels shall be free of burrs or hazardous projections and coated with zinc-rich primer or equivalent.

ALTERNATE SAFETY CHAIN ATTACHMENT (With Sign Present)

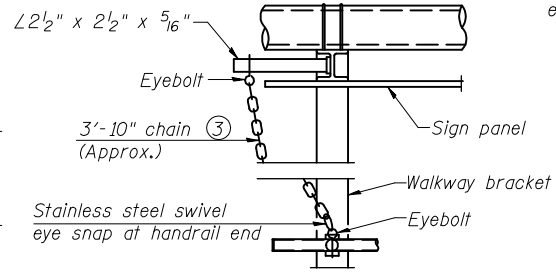
Items not shown same as "Side Elevation" of "Handrail Details"



Details not shown same as "ELEVATION" at right.

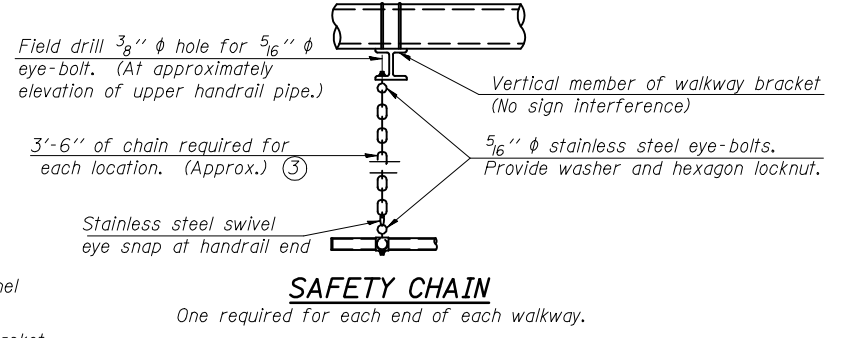
ELEVATION AT HANDRAIL JOINT

Details not shown same as "FRONT ELEVATION"



ALTERNATE SAFETY CHAIN ATTACHMENT

- ③ 3/8" Type 304L stainless steel chain, approximately 12 links per foot.
- ④ Extrusions may be used in lieu of the details shown, with approval of the Engineer.



One required for each end of each walkway.

DESIGNED -	200
CHECKED -	EXAMINED
DRAWN -	PASSED
CHECKED -	ENGINEER OF BRIDGES AND STRUCTURES

NUMBER	REVISION	DATE

PLAN AT HANDRAIL JOINT

Details not shown same as "PLAN"

CANTILEVER SIGN STRUCTURES HANDRAIL DETAILS ALUMINUM TRUSS & STEEL POST				
SHEET NO. 7	F.A.I. RTE. 57	SECTION (21-28,21-10-29,10-30)RS-1	COUNTY *	TOTAL SHEETS 115
8 SHEETS	CONTRACT NO. 70251		ILLINOIS FED. AID PROJECT	