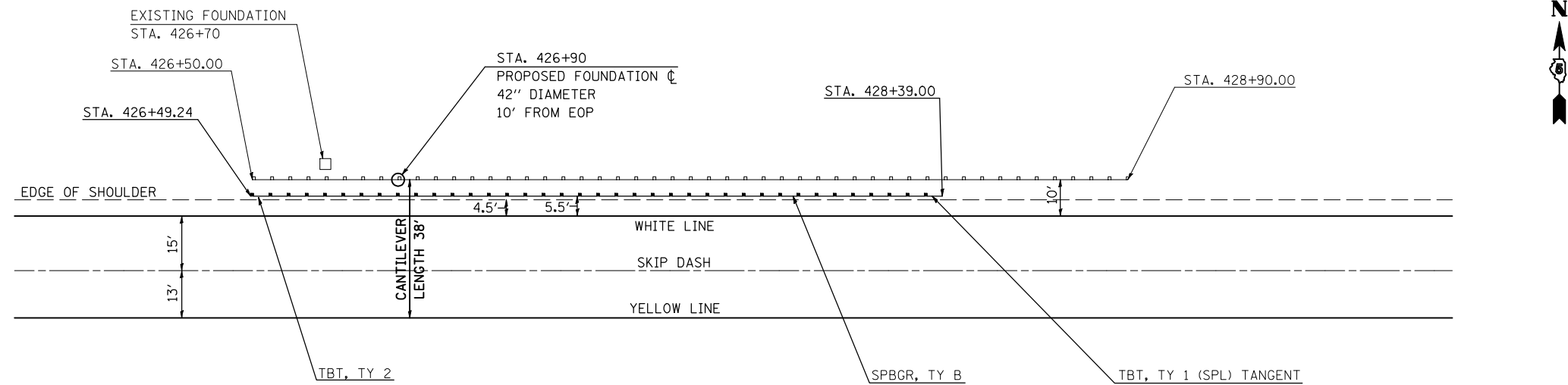


PLAN VIEW FOR SIGN TRUSS MOUNTING

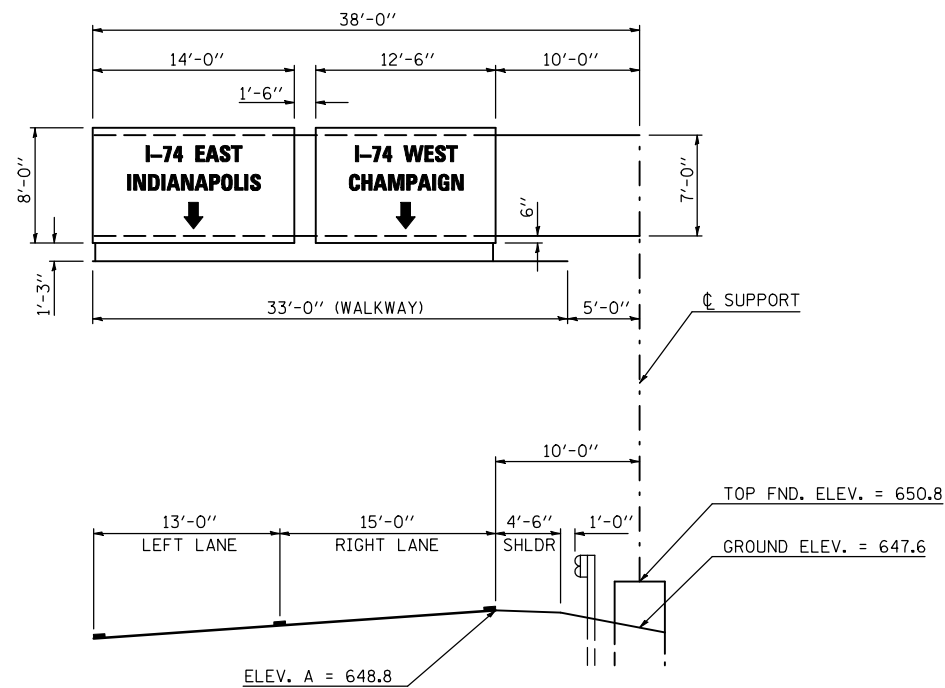
5 C 092 U150 L000.36



SIGN TRUSS MOUNTING DETAIL

5 C 092 U150 L000.36

STA. 426+90

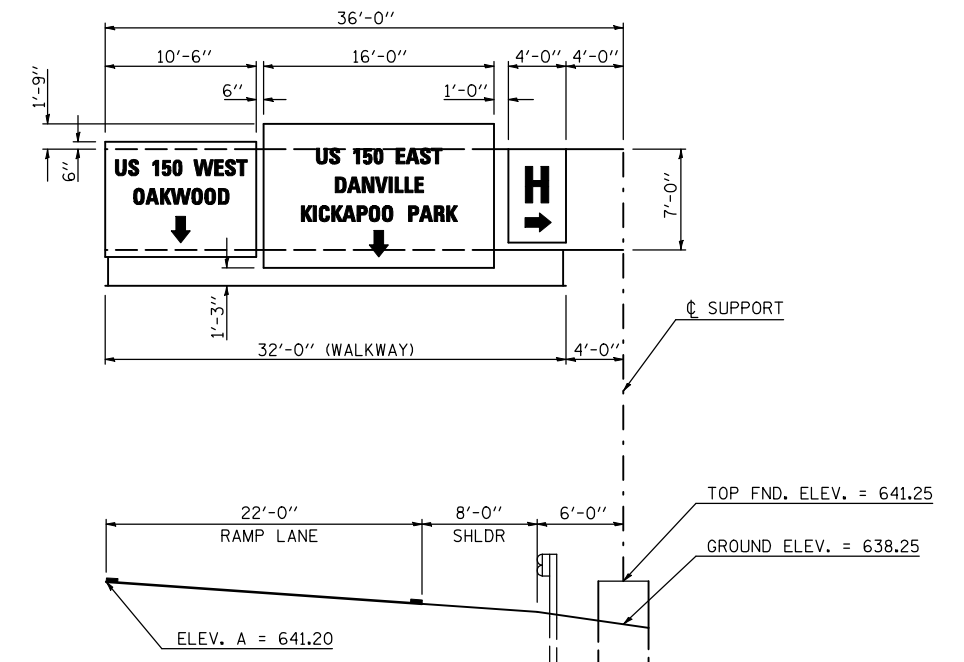


TEMP. BENCHMARK = CHISELED "X" ON SE ANCHOR BOLT = 649.61 - EST. FROM 1971 PLANS

SIGN TRUSS MOUNTING DETAIL

5 C 092 I074 R210.00

STA. 111+39



TEMP. BENCHMARK = CHISELED "X" ON SW ANCHOR BOLT = 641.84 - EST. FROM 1971 PLANS

FILE NAME =	USER NAME = bucklesjj	DESIGNED -	REVISED -
ct:\pwwork\pwwid\BUCKLESJJ\d0132727\0970315-sht-truss_details.dgn		DRAWN -	REVISED -
		CHECKED -	REVISED -
		DATE -	REVISED -

**STATE OF ILLINOIS
DEPARTMENT OF TRANSPORTATION**

SIGN TRUSS MOUNTING DETAIL

SCALE: SHEET NO. 1 OF 1 SHEETS STA. TO STA.

F.A. RTE.	SECTION	COUNTY	TOTAL SHEETS	SHEET NO.
	(36X,36X-1,34Z-3)RS-1	VERMILION	58	38
CONTRACT NO. 70315			ILLINOIS FED. AID PROJECT	