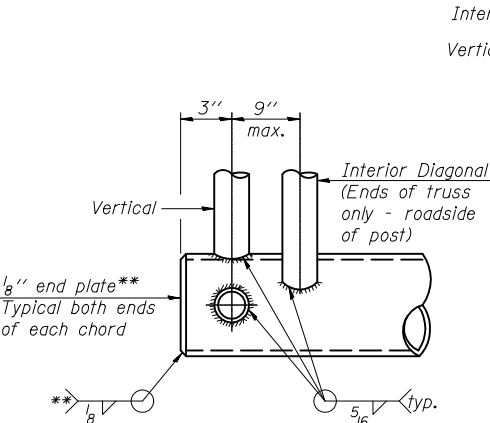


**ELEVATION Y**  
(Lower chord at end)  
**ELEVATION X**  
(Post at lower chord)

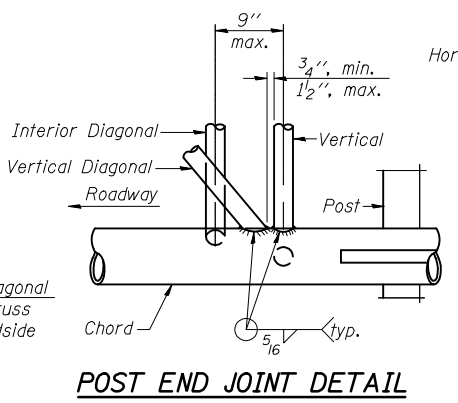
**TYPICAL TRUSS UNIT**  
(Sign and walkway omitted for clarity)

For Section B-B and Section C-C, see Base Sheet OSC-A-3.

Note:  
There are twice as many horizontal diagonals as there are vertical diagonals.



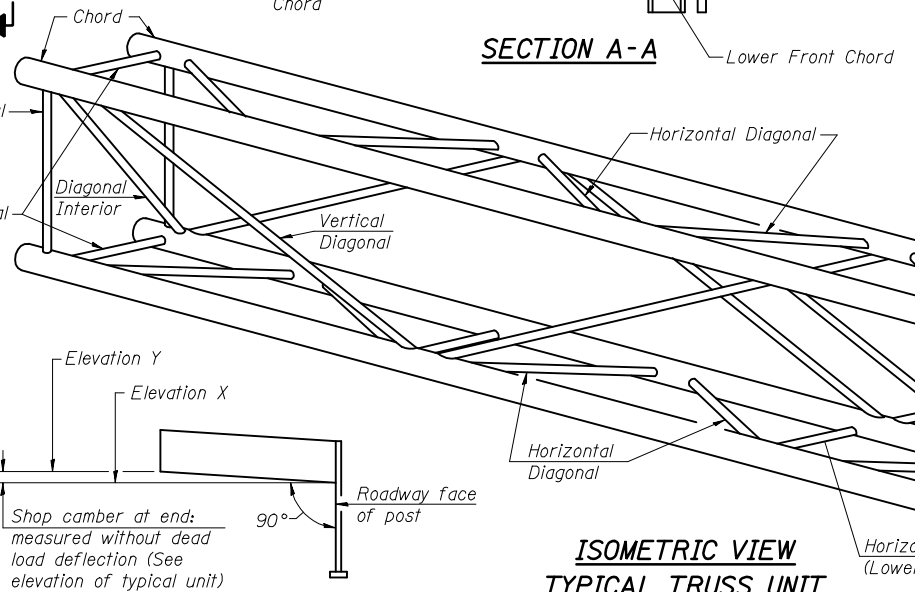
**CANTILEVER END JOINT DETAIL**  
\*\* Contractor may alternatively use standard aluminum drive-fit cap to close ends.



**POST END JOINT DETAIL**

**SHOP CAMBER TABLE**

Unit Length (L)	Shop Camber at End
15'	1 1/2"
16'-17'	1 3/4"
18'-20'	2"
21'-22'	2 1/4"
23'-25'	2 1/2"
26'-27'	2 3/4"
28'-30'	3"
31'-32'	3 1/4"
33'-35'	3 1/2"
36'-37'	4"
38'-40'	4 1/2"



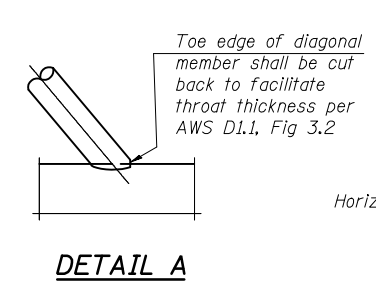
**ISOMETRIC VIEW TYPICAL TRUSS UNIT**  
ASTM B221 Alloy 6061 Temper T6

**CAMBER DIAGRAM**  
(For Fabrication Only)

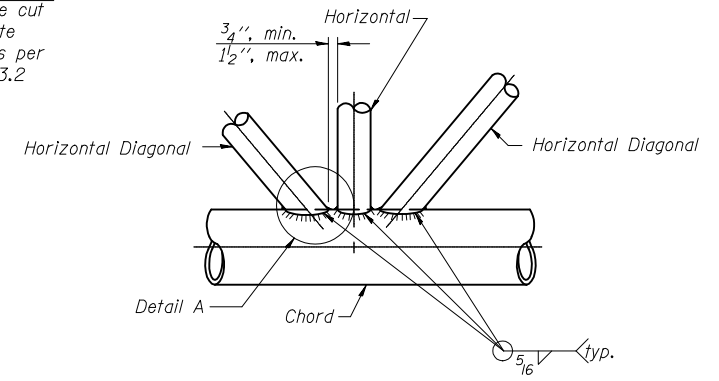
Truss Type	Dimension "a"	Dimension "b"	Dimension "s"	Limits for Panel Spacing (P)*	Up. & Low. Chord		Verticals; Horizontals; Vertical, Horizontal, and Interior Diagonals	
					O.D.	Wall	O.D.	Wall
I-C-A	24"	54"	16"	36" min. to 48" max.	5"	5/16"	2 1/2"	5/16"
II-C-A	36"	66"	21"	42" min. to 54" max.	6 1/2"	5/16"	3 1/4"	5/16"
III-C-A (35' Max.)	36"	84"	21"	48" min. to 66" max.	7"	3/8"	3 1/2"	3/8"
III-C-A (>35' to 40')	36"	84"	21"	48" min. to 66" max.	8"	3/8"	3 1/2"	3/8"

\*P =  $\frac{L-s-3''}{\# \text{ Panels}}$

STATE OF ILLINOIS  
DEPARTMENT OF TRANSPORTATION



**DETAIL A**



**TRUSS INTERIOR JOINT DETAIL**

Structure Number	Station	Truss Type	Design Length (L)	Number of Panels Per Unit	Panel Length (P)*
5 C 092 I074 R210.00	111+39	III-C-A	36'-0"	8	4'-3"
5 C 092 U150 L000.36	426+90	III-C-A	38'-0"	8	4'-6"

NUMBER	REVISION	DATE

OSC-A-2 12-1-08

\*FAU 7052 /FAP 729