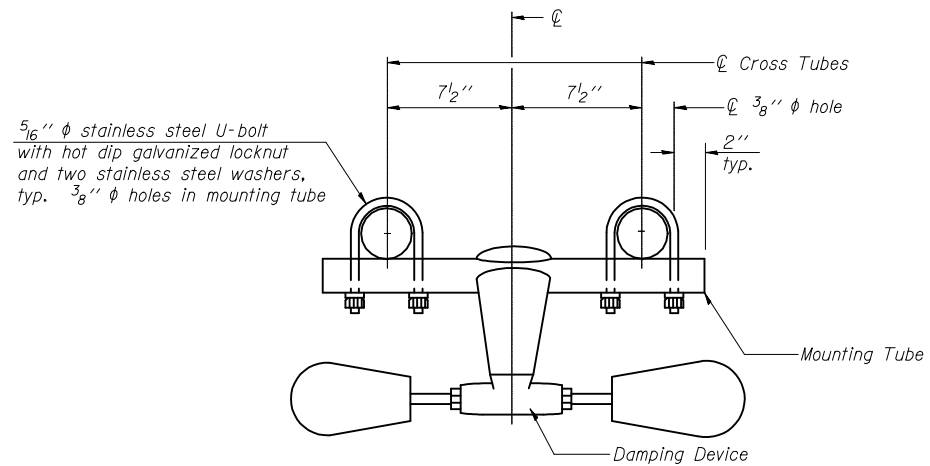
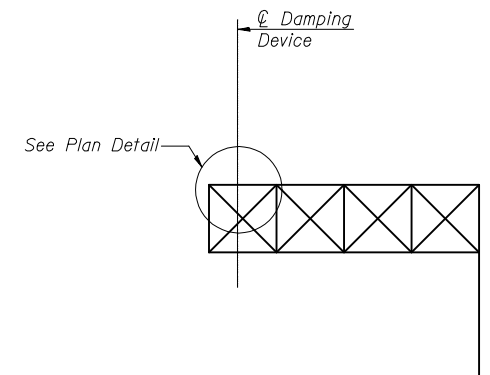


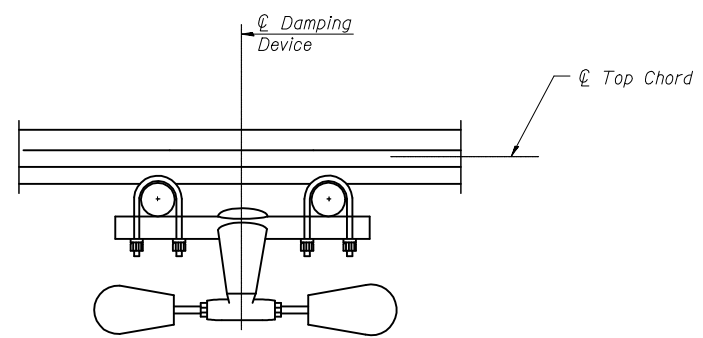
PLAN DETAIL



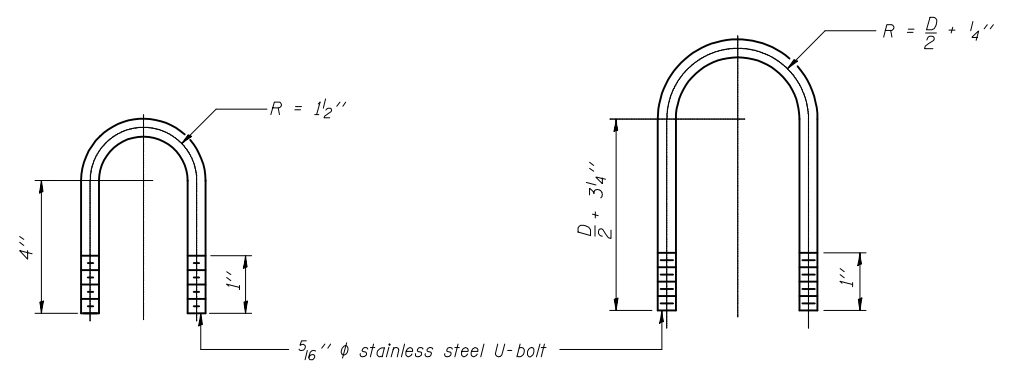
TRUSS DAMPING DEVICE CONNECTION DETAIL



ELEVATION
Aluminum Cantilever Sign Structure



SECTION A-A



DAMPING DEVICE MOUNTING TUBE U-BOLT DETAIL
(Typical)

TOP CHORD TO CROSS TUBE U-BOLT DETAIL
(Typical)

- GENERAL NOTES**
- Damper: One damper per truss. (31 lbs. Stockbridge-Type Aluminum-29" minimum between ends of weights)
 - Materials: Aluminum tubes shall be ASTM B221 alloy 6061 temper T6

OSC-A-D

12-1-08

FILE NAME =	USER NAME = bucklesjj	DESIGNED -	REVISED -
ct:\pwwork\pwwid\BUCKLESJJ\d0132727\070315-sht-truss_details.dgn		DRAWN -	REVISED -
PLOT SCALE = 40.0000' / IN.		CHECKED -	REVISED -
PLOT DATE = 12/7/2009		DATE -	REVISED -

**STATE OF ILLINOIS
DEPARTMENT OF TRANSPORTATION**

**CANTILEVER SIGN STRUCTURE
DAMPING DEVICE**

SCALE: SHEET NO. 1 OF 1 SHEETS STA. TO STA.

***FAU 7052 /FAP 729**

F.A. RTE.	SECTION	COUNTY	TOTAL SHEETS	SHEET NO.
*	(36X,36X-1,34Z-3)RS-1	VERMILION	58	41
			CONTRACT NO. 70315	

ILLINOIS FED. AID PROJECT