

STATE OF ILLINOIS
DEPARTMENT OF TRANSPORTATION
DIVISION OF HIGHWAYS
PROPOSED
HIGHWAY PLANS

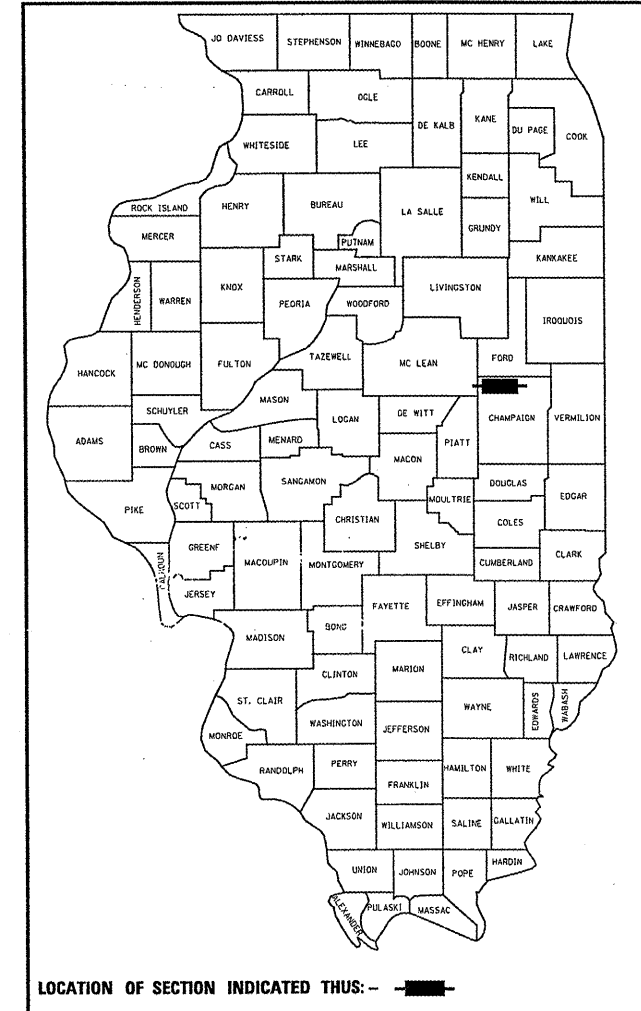
FAP ROUTE 709 (US RTE 136)
SECTION (105BR)BR
PROJECT BRF-0709(026)
BRIDGE REPLACEMENT
CHAMPAIGN COUNTY

C-95-071-04
WILDCAT SLOUGH EAST OF FISHER

F.A.P. RTE.	SECTION	COUNTY	TOTAL SHEETS	SHEET NO.
709	(105BR)BR	CHAMPAIGN	55	1
FED. ROAD DIST. NO. 5	ILLINOIS	CONTRACT NO. 70427		

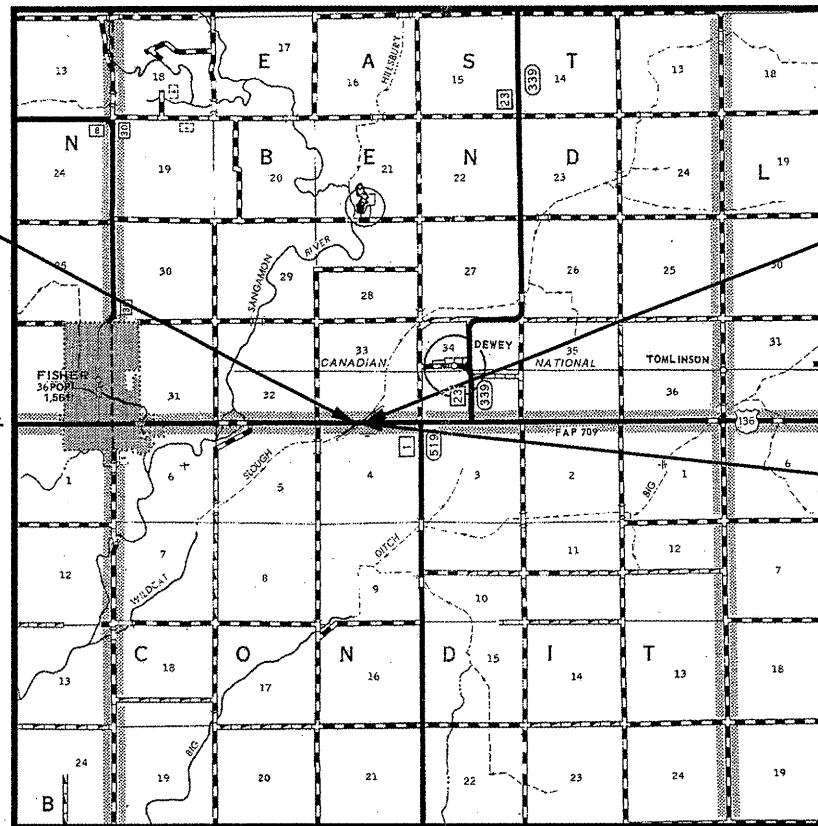
*55+1=56

D-95-068-04



BEGIN SECTION (105BR)BR
STATION 1891+00.00

END SECTION (105BR)BR
STATION 1895+00.00

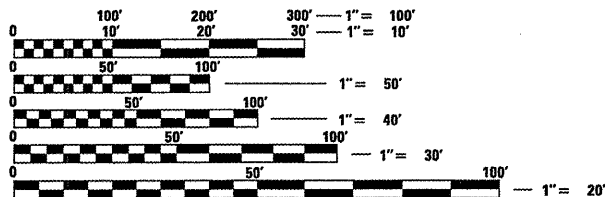


LOCATION MAP SCALE: 1/2" = 5280' (1 MILE)

GROSS AND NET LENGTH OF IMPROVEMENT = 400 FEET = 0.076 MILES

DESIGN DESIGNATION

ROADWAY: MINOR ARTERIAL (NON URBAN)
DESIGN SPEED: 55 MPH
ADT: 2,700 (2006) 3,250 (2026)
PV: 90.0%
SU: 5.5%
MU: 4.5%



FULL SIZE PLANS HAVE BEEN PREPARED USING STANDARD ENGINEERING SCALES. REDUCED SIZED PLANS WILL NOT CONFORM TO STANDARD SCALES. IN MAKING MEASUREMENTS ON REDUCED PLANS, THE ABOVE SCALES MAY BE USED.

J.U.L.I.E.
JOINT UTILITY LOCATION INFORMATION FOR EXCAVATION
1-800-892-0123 EAST BEND TWP
OR 811 CONDIT TWP

PROPOSED S.N. 010-0283
EXISTING S.N. 010-0062
US 136 @ STA 1893+15.65
STEEL I-BEAM ON STUB ABUT.
136'-1" BK. TO BK. ABUT.
45° LT. FWD. SKEW;
CLEAR WIDTH = 32'-0"



STATE OF ILLINOIS
DEPARTMENT OF TRANSPORTATION
DIVISION OF HIGHWAYS

SUBMITTED 12/17 2009

Isabel E. Auer
DEPUTY DIRECTOR OF HIGHWAYS, REGION THREE ENGINEER

Scott E. Still, P.E.
ENGINEER OF DESIGN AND ENVIRONMENT

Christine M. Reed
DIRECTOR OF HIGHWAYS, CHIEF ENGINEER

PRINTED BY THE AUTHORITY
OF THE STATE OF ILLINOIS

Mark A. Reitz 12-16-09
MARK A. REITZ P.E. #062-047531 DATE
LICENSE EXPIRES: NOV 30, 2011
HURST-ROSCHÉ ENGINEERS, INC.

HURST-ROSCHÉ ENGINEERS, INC.
HILLSBORO, ILLINOIS 62049
(217)532-3959 FAX (217)532-3212

PROJECT ENGINEER: JASON W. STULTS
SQUAD LEADER: RUSTIN KEYS 217-465-4181

CONTRACT NO. 70427