

STATE OF ILLINOIS
DEPARTMENT OF TRANSPORTATION

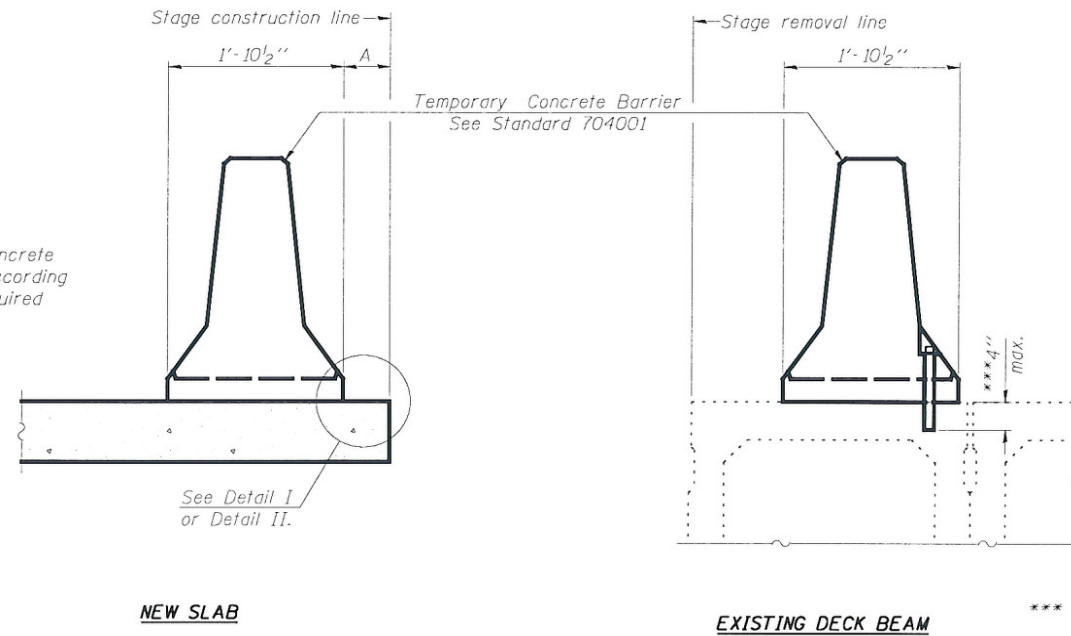
NOTES

Detail I - With Bar Splicer or Couplers:
Connect one (1) 1"x7 1/2"x10" steel PL to the top layer of couplers with 2-5/8" φ bolts screwed to coupler at approximate C of each barrier panel.

Detail II - With Extended Reinforcement Bars:
Connect one (1) 1"x7 1/2"x10" steel PL to the concrete slab or concrete wearing surface with 2-5/8" φ Expansion Anchors or cast in place inserts spaced between the top layer of reinforcement at approximate C of each barrier panel.

Cost of anchorage is included with Temporary Concrete Barrier. The 1" x 7 1/2" x 10" plate shall not be removed until stage II construction forms and all reinforcement bars are in place and the concrete is ready to be placed.

When "A" is 3'-6" or less, the temporary concrete barrier shall be anchored to the new slab according to Detail I or Detail II. No anchorage is required when "A" is greater than 3'-6".

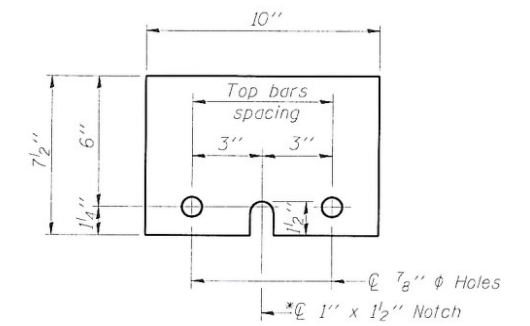


NEW SLAB

EXISTING DECK BEAM

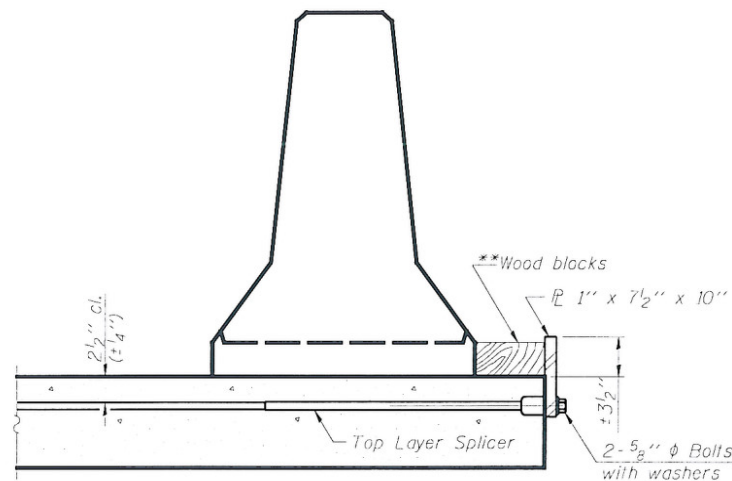
*** If existing deck beam is to remain in place after stage construction, embedment shall only be into wearing surface and not into existing deck beam concrete.

SECTIONS THRU SLAB OR DECK BEAM

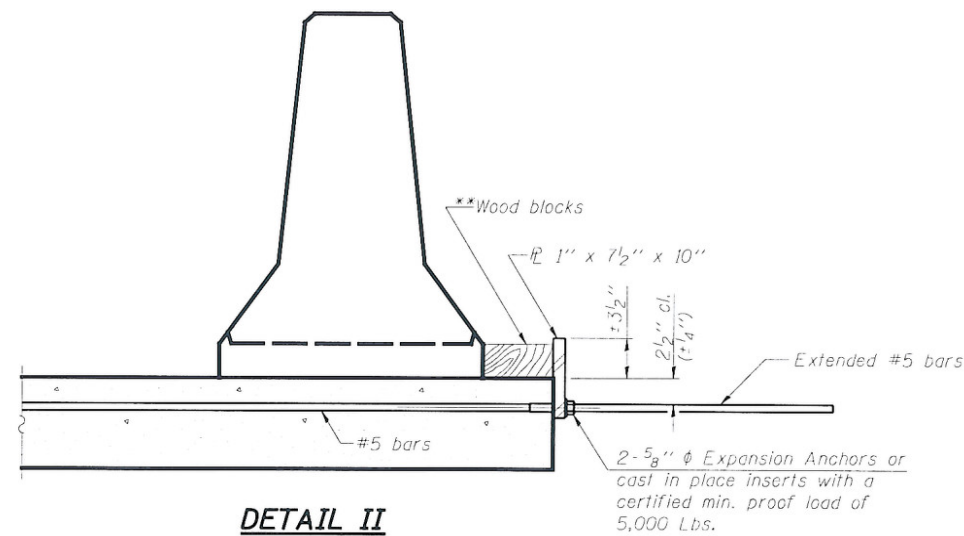


STEEL RETAINER PL 1" x 7 1/2" x 10"

* Required only with Detail II



DETAIL I



DETAIL II

**Wood blocks may be omitted when required to provide minimum stage traffic lane width. When the wood blocks are omitted, the concrete barrier shall be in direct contact with the steel retainer plate.

DESIGNED	JLG
CHECKED	CJC
DRAWN	UJ
CHECKED	JLG

HR
HURST-ROSCHKE
ENGINEERS, INC.
PROFESSIONAL DESIGN NUMBER 184-000298

**MODIFIED TEMPORARY
CONCRETE BARRIER
FOR STAGE CONSTRUCTION
STRUCTURE NO. 010-0283**

SHEET NO. 4 24 SHEETS	F.A.P. RTE.	SECTION	COUNTY	TOTAL SHEETS	SHEET NO.
	709	(105BR)BR	CHAMPAIGN	55	16
SN 010-0283			CONTRACT NO. 70427		
FED. ROAD DIST. NO. 5 ILLINOIS FED. AID PROJECT					