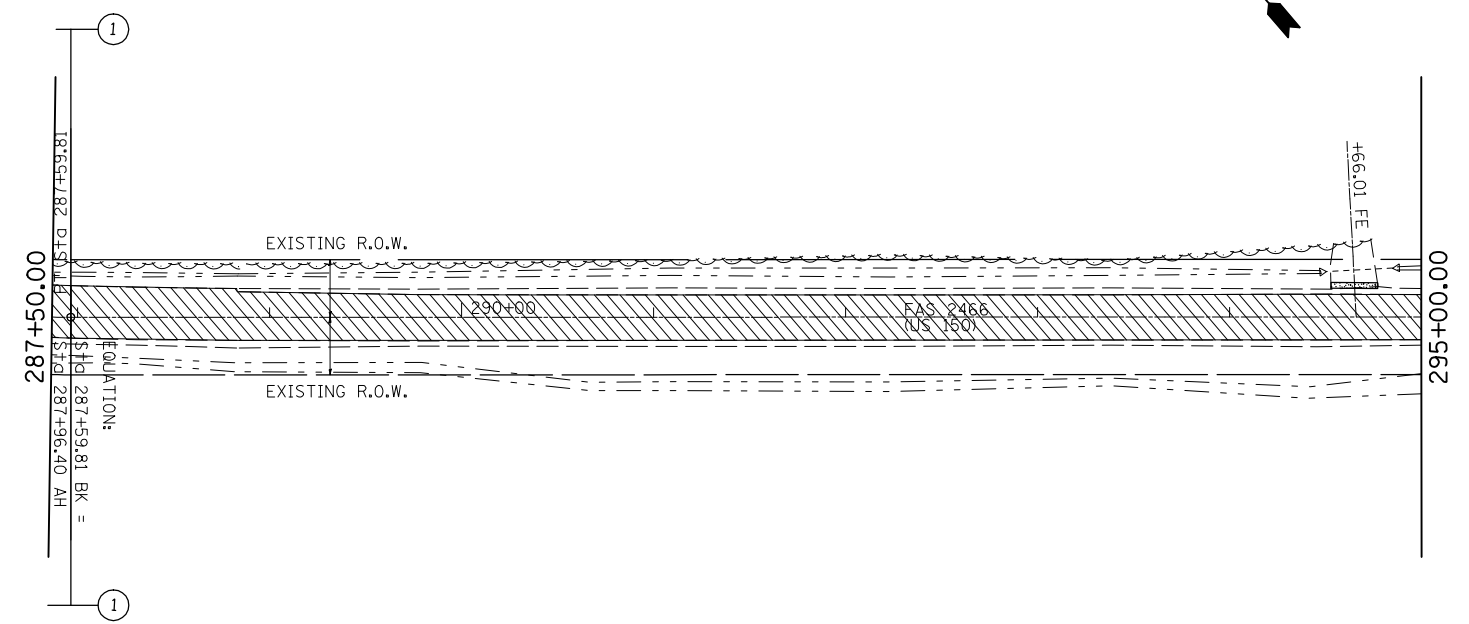
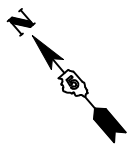
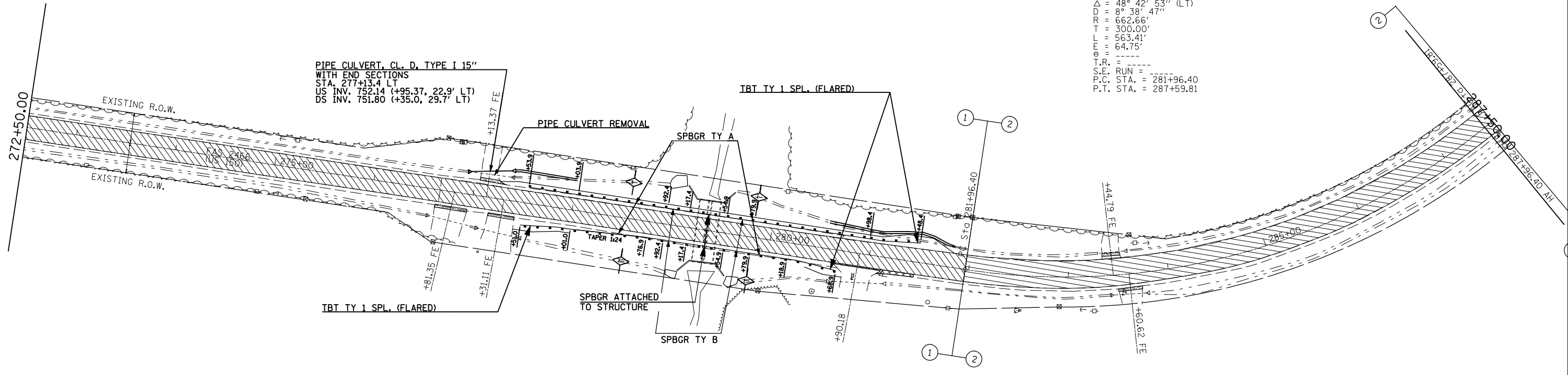




EXIST. CURVE 31
 PI STA. = 284+96.40
 $\Delta = 48^\circ 42' 53''$ (LT)
 $D = 8^\circ 38' 47''$
 $R = 662.66'$
 $T = 300.00'$
 $L = 563.41'$
 $E = 64.75'$
 $\theta = \text{---}$
 $T.R. = \text{---}$
 $S.E. \text{ RUN} = \text{---}$
 $P.C. \text{ STA.} = 281+96.40$
 $P.T. \text{ STA.} = 287+59.81$



- HMA SURFACE REMOVAL, 1 1/2"
- HMA SURFACE REMOVAL, 2 1/4"
- HMA SURFACE REMOVAL, BUTT JOINT
- AGGREGATE SHOULDER STONE

FILE NAME =	USER NAME = bowerml	DESIGNED -	REVISED -	STATE OF ILLINOIS DEPARTMENT OF TRANSPORTATION	US 150 Plan Sheet			F.A.S. RTE.	SECTION	COUNTY	TOTAL SHEETS	SHEET NO.					
et:\pw\work\PWIDOT\BOWERML\d0115438\d0570	523-sht-dblplan-50scale.dgn	DRAWN -	REVISED -		SCALE: 100' = 1"	SHEET NO.	OF	SHEETS	STA.	TO	STA.	2466	(9,10,11)RS-3	McLean	47	22	
	PLOT SCALE = 100.0000' / IN.	CHECKED -	REVISED -														
	PLOT DATE = 12/4/2009	DATE -	REVISED -														
												CONTRACT NO. 70523		ILLINOIS FED. AID PROJECT			