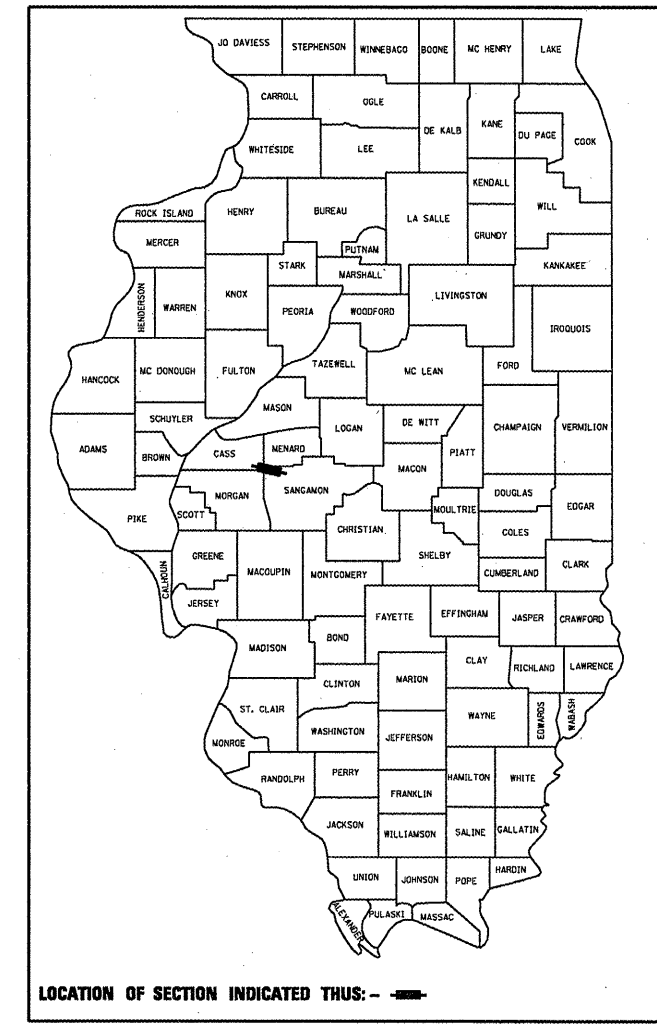


F.A.P. RTE.	SECTION	COUNTY	TOTAL SHEETS	SHEET NO.
67	105(RS-6); 106(RS-4)	ILLINOIS	88	1

*-CASS, SANGAMON **★88-1+1=88**

D-96-028-09



LOCATION OF SECTION INDICATED THUS: - - -

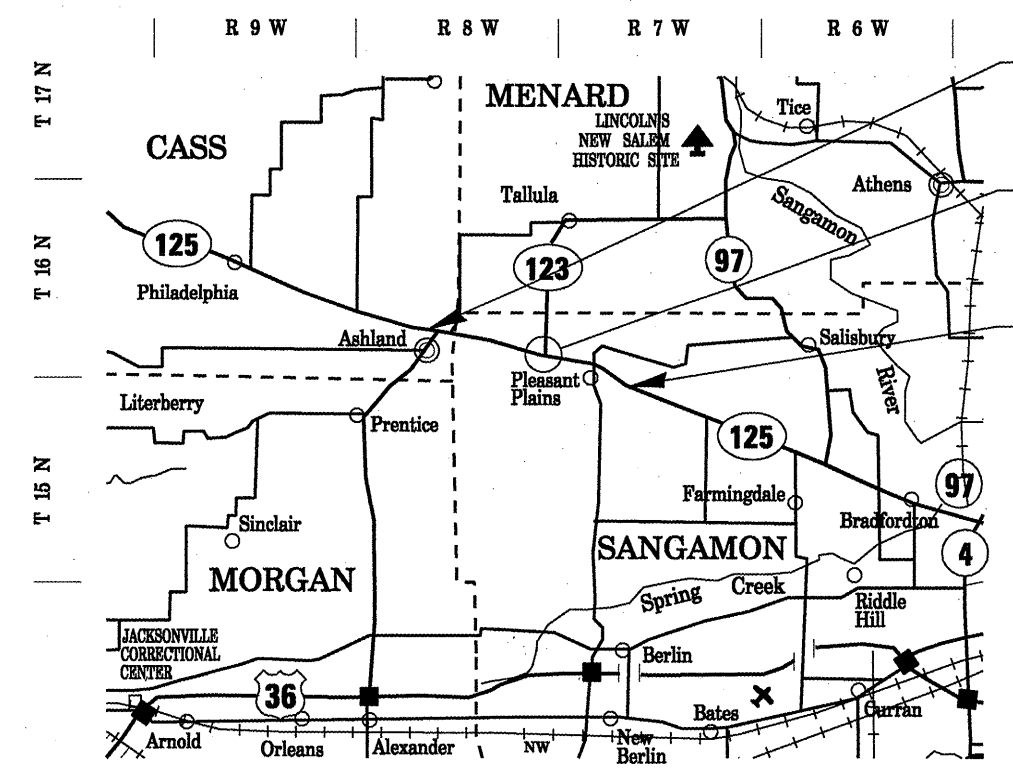
STATE OF ILLINOIS
DEPARTMENT OF TRANSPORTATION
DIVISION OF HIGHWAYS

**PROPOSED
HIGHWAY PLANS**

FAP ROUTE 67 (IL RTE. 125)
SECTION 105(RS-6); 106(RS-4)

PROJECT : *ACF-0067(081)*
RESURFACING FROM ASHLAND TO E.C.L. PLEASANT PLAINS
CASS & SANGAMON COUNTIES
C-96-028-09

INDEX OF SHEETS AND
HIGHWAY STANDARDS ARE
LOCATED ON SHEET 2.



BEGINNING OF PROJECT:
STATION 1079+00.00

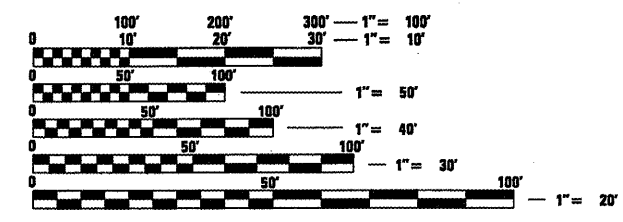
**PROPOSED ILL 125 /IL 123
INTERSECTION
IMPROVEMENTS**

END OF PROJECT:
STATION 276+50.00

LOCATION MAP

NET LENGTH = 27,911.17 FT. = 5.286 MILES

STATION EQUATIONS:
1099+98.54 BK. = 18+36.74 AHD.
184+21.41 BK. = 184+17.48 AHD.
272+58.90 BK. = 272+63.46 AHD.



FULL SIZE PLANS HAVE BEEN PREPARED USING STANDARD ENGINEERING SCALES. REDUCED SIZED PLANS WILL NOT CONFORM TO STANDARD SCALES. IN MAKING MEASUREMENTS ON REDUCED PLANS, THE ABOVE SCALES MAY BE USED.

J.U.L.I.E.
JOINT UTILITY LOCATION INFORMATION FOR EXCAVATION
1-800-892-0123
OR 811



STATE OF ILLINOIS
DEPARTMENT OF TRANSPORTATION
DIVISION OF HIGHWAYS

SUBMITTED *December 16, 2009*

Reg Z Smith
DEPUTY DIRECTOR OF HIGHWAYS, REGION ENGINEER

Scott E. Stett, P.E.
ENGINEER OF DESIGN AND ENVIRONMENT

Christine M. Reed, P.E.
DIRECTOR OF HIGHWAYS, CHIEF ENGINEER

**PRINTED BY THE AUTHORITY
OF THE STATE OF ILLINOIS**

PROJECT ENGINEER: SAL MADONIA (217) 782-4761
PROJECT TEAM ENGINEER: MARCUS BRUCE (217) 524-0946

CONTRACT NO. 72C49