

STATE OF ILLINOIS
DEPARTMENT OF TRANSPORTATION
DIVISION OF HIGHWAYS

**PROPOSED
CONTRACT MAINTENANCE**

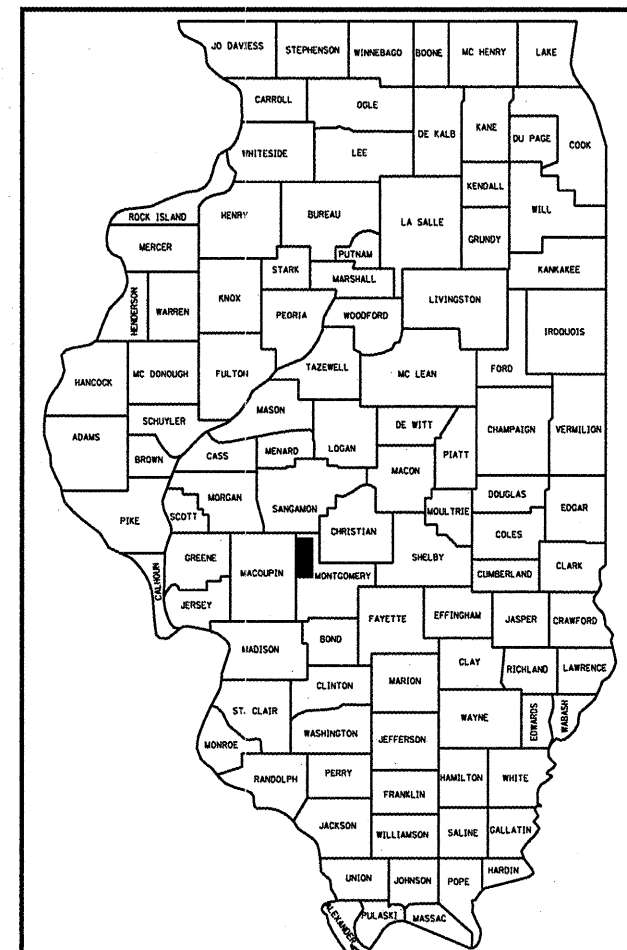
FAS 1769 (FRI-55 WEST)
SECTION (112)SEALCOAT

MONTGOMERY COUNTY

F.A.S. RTE.	SECTION	COUNTY	TOTAL SHEETS	SHEET NO.
1769	(112)SEALCOAT	MONTGOMERY	6	1
FED. ROAD DIST. NO.	ILLINOIS	CONTRACT NO. 72D33		

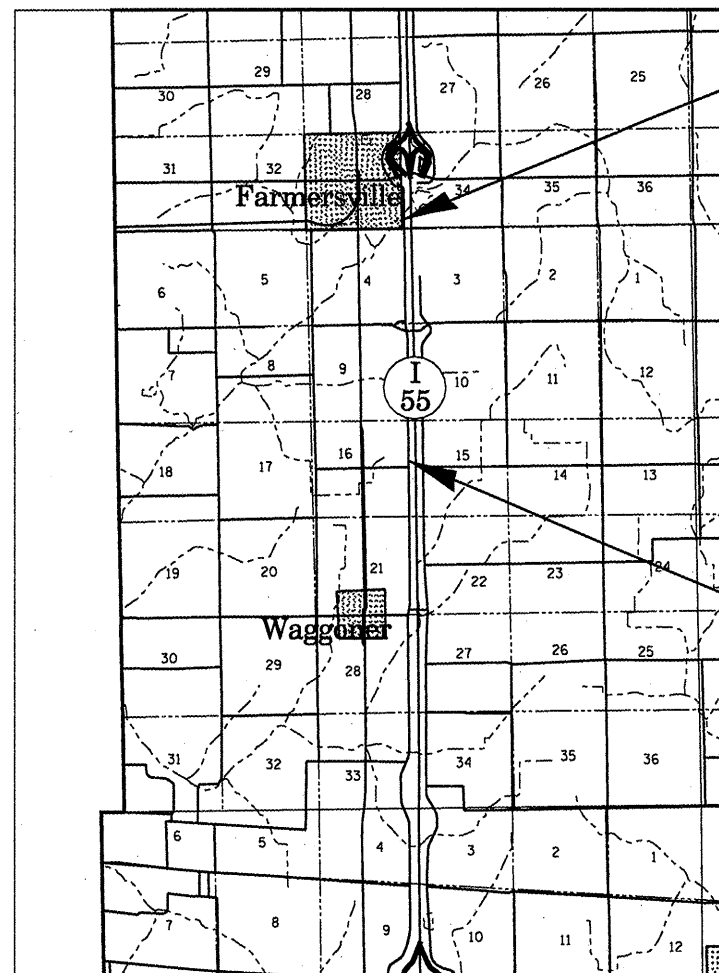
FOR INDEX OF SHEETS, SEE SHEET NO. 2

D-96-157-10



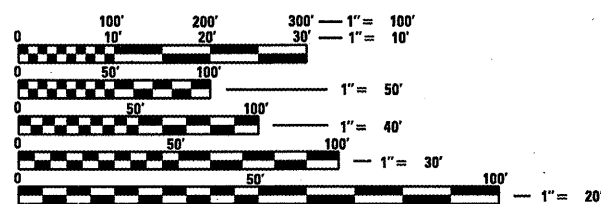
C-96-157-10

R 5 W



BEGIN PROJECT
STA. 1075 + 00

END PROJECT
STA. 1207 + 00



FULL SIZE PLANS HAVE BEEN PREPARED USING STANDARD ENGINEERING SCALES. REDUCED SIZED PLANS WILL NOT CONFORM TO STANDARD SCALES. IN MAKING MEASUREMENTS ON REDUCED PLANS, THE ABOVE SCALES MAY BE USED.

J.U.L.I.E.
JOINT UTILITY LOCATION INFORMATION FOR EXCAVATION
1-800-892-0123
OR 811

PLAN AND CONTRACT TECHNICIAN
TIMOTHY SHARP (217)782-7743

CONTRACT NO. 72D33

GROSS LENGTH = 13,200.00 FT. = 2.500 MILE

STATE OF ILLINOIS
DEPARTMENT OF TRANSPORTATION
DIVISION OF HIGHWAYS

SUBMITTED December 23, 2009
Roger Z. Dombek
DEPUTY DIRECTOR OF HIGHWAYS, REGION ENGINEER

January 29, 2010
Scott E. Stettin
ENGINEER OF DESIGN AND ENVIRONMENT

January 29, 2010
Christine M. Reed
DIRECTOR OF HIGHWAYS, CHIEF ENGINEER

PRINTED BY THE AUTHORITY
OF THE STATE OF ILLINOIS

INDEX

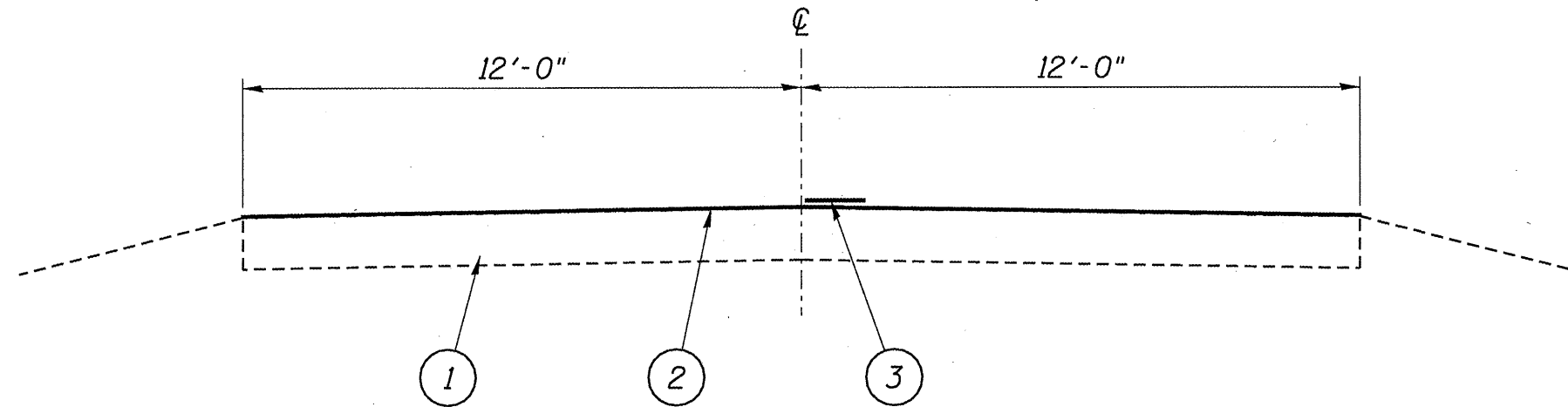
- 1 COVER
- 2 INDEX/STANDARDS/SIGNATURES
- 3 QUANTITIES
- 4 TYPICAL SECTIONS
- 5-6 PLANS

STANDARDS

- 701001-02
- 701006-03
- 701201-03
- 701301-03
- 701311-03
- 701901-01
- 780001-02
- 781001-03

STATE OF ILLINOIS DEPARTMENT OF TRANSPORTATION DIVISION OF HIGHWAYS DISTRICT 6
EXAMINED <u>December 16</u> 20 <u>09</u> <u>[Signature]</u> ENGINEER OF OPERATIONS
EXAMINED <u>December 16</u> 20 <u>09</u> <u>[Signature]</u> ENGINEER OF PROGRAM IMPLEMENTATION
EXAMINED <u>December 16</u> 20 <u>09</u> <u>[Signature]</u> ENGINEER OF PROGRAM DEVELOPMENT

INDEX/STANDARDS/SIGNATURES
FAS 1769 (FRI-55 WEST)
SECTION (112) SEAL COAT
MONTGOMERY COUNTY

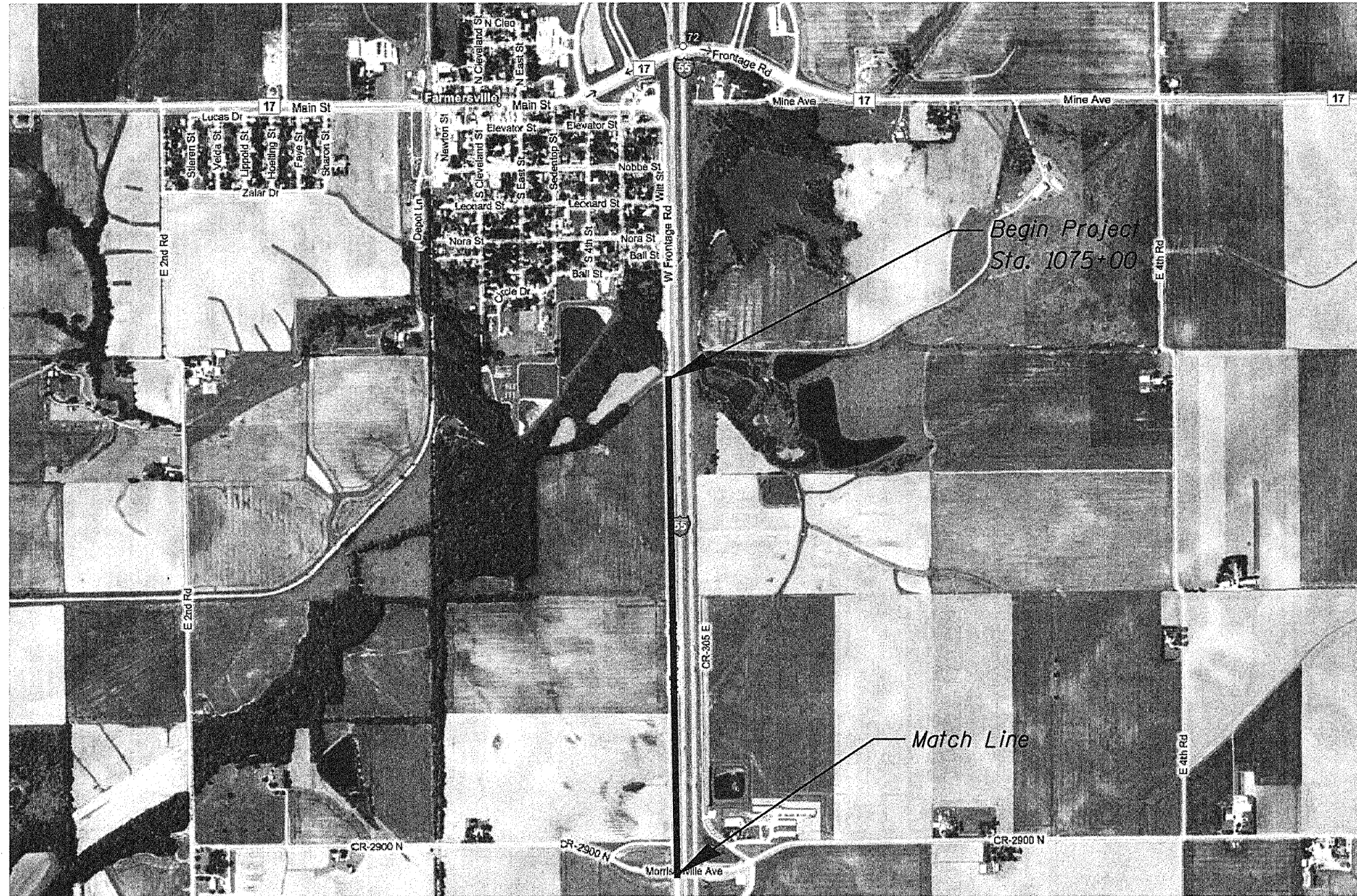


SEE PLAN SHEETS FOR LOCATIONS

LEGEND

- 1- EXIST. P.C.C. PAVEMENT 10"
- 2- PROP. BIT. SURF. TREATMENT (CL. A-1)
- 3- PAINT PAVEMENT MARKING - LINE 5"

TYPICALS
FAS 1769 (FRI-55 WEST)
SECTION (112) SEAL COAT
MONTGOMERY COUNTY



PLAN
FAS 1769 (FRI-55 WEST)
SECTION (112) SEAL COAT
MONTGOMERY COUNTY



PLAN
FAS 1769 (FRI-55 WEST)
SECTION (112) SEAL COAT
MONTGOMERY COUNTY