

F.A.U. RTE.	SECTION	COUNTY	TOTAL SHEETS	SHEET NO.
8324	(21, BY) B-1	CRAWFORD	19	1
		ILLINOIS	CONTRACT NO. 74104	

STATE OF ILLINOIS
DEPARTMENT OF TRANSPORTATION
DIVISION OF HIGHWAYS

**PROPOSED
HIGHWAY PLANS**

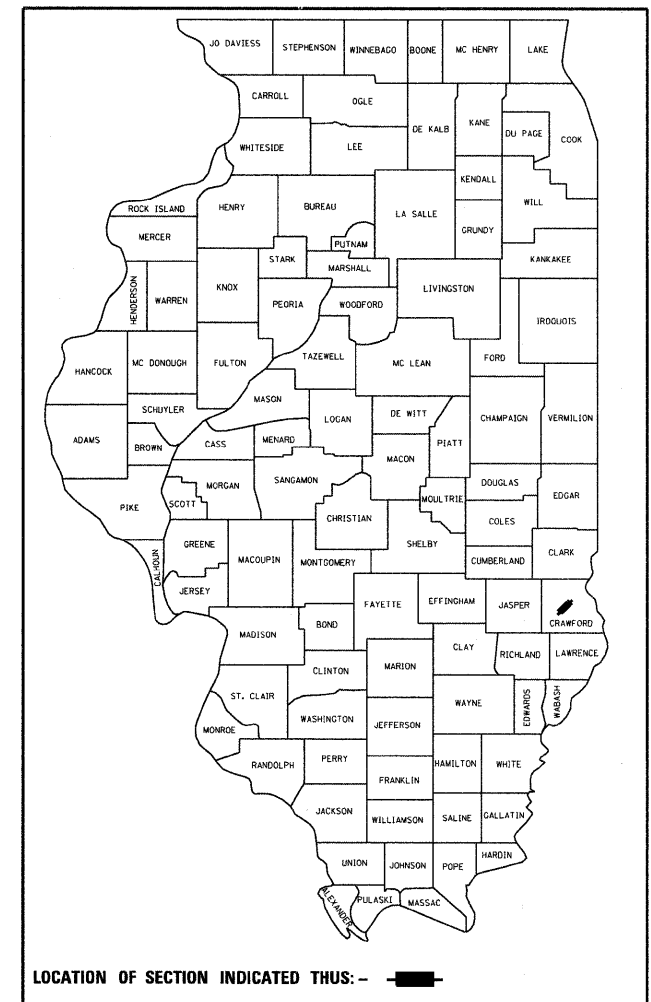
FAU ROUTE 8324 (TRIMBLE ROAD)
SECTION (21, BY) B-1

**CULVERT REPLACEMENT
CRAWFORD COUNTY**

C-97-068-05

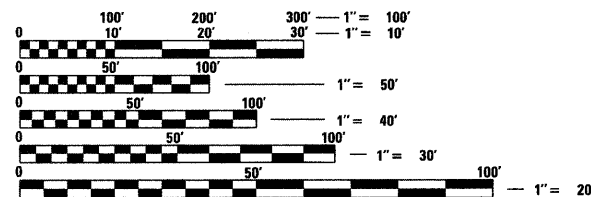
FOR INDEX OF SHEETS, SEE SHEET NO. 2

D-97-033-05



FAU 8324
SECTION (21, BY) B-1
CRAWFORD COUNTY
EXIST. STR. * 017-0020
PROP. STR. * 017-2014
STATION 602+21.00

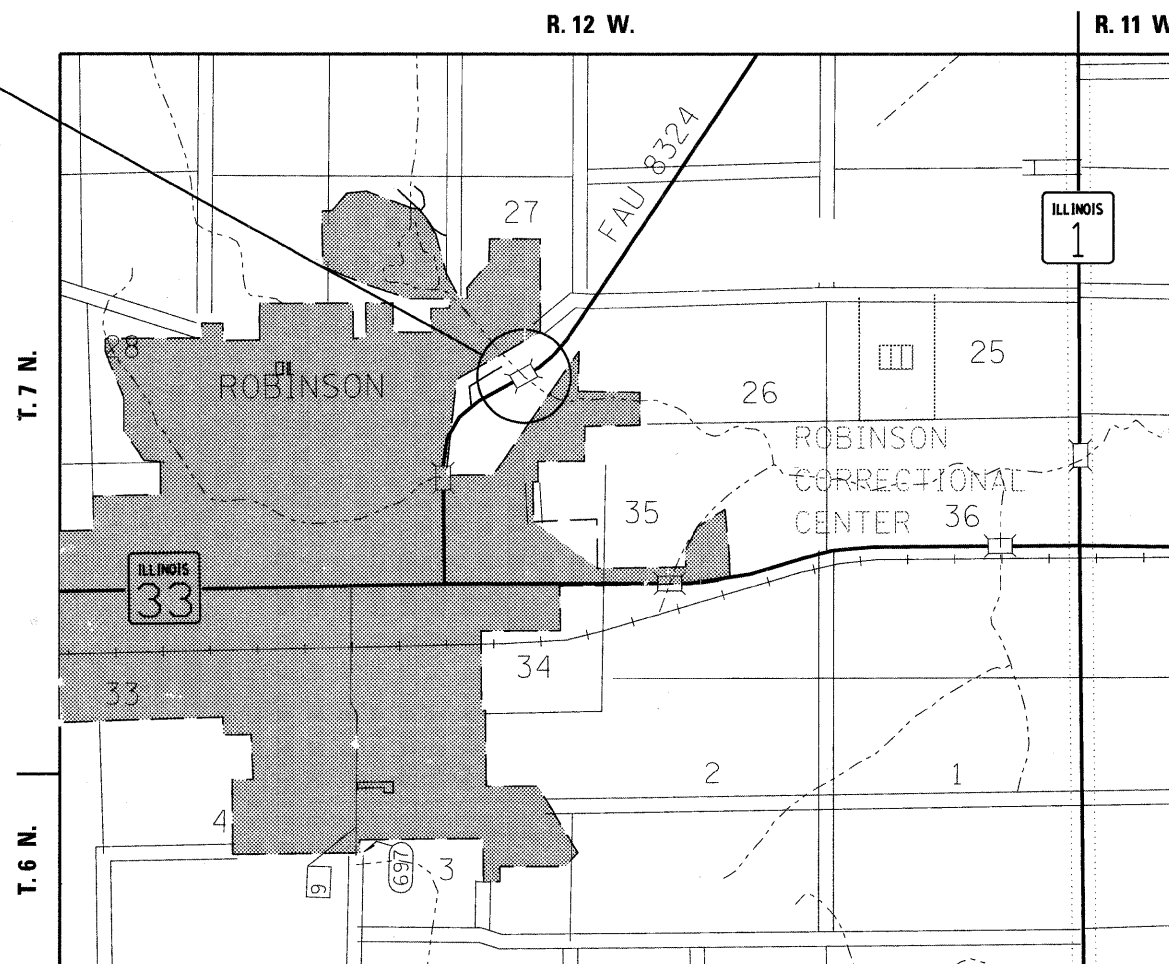
3267 ADT = 2008



FULL SIZE PLANS HAVE BEEN PREPARED USING STANDARD ENGINEERING SCALES. REDUCED SIZED PLANS WILL NOT CONFORM TO STANDARD SCALES. IN MAKING MEASUREMENTS ON REDUCED PLANS, THE ABOVE SCALES MAY BE USED.

J.U.L.I.E.
JOINT UTILITY LOCATION INFORMATION FOR EXCAVATION
1-800-892-0123
OR 811

PROJECT ENGINEER: TOM RONAN
PROJECT MANAGER: KEVIN BRADY
TOWNSHIP: ROBINSON
CONTRACT NO. 74104



GROSS LENGTH = 690 FT. = 0.13 MILE
NET LENGTH = 690 FT. = 0.13 MILE

STATE OF ILLINOIS
DEPARTMENT OF TRANSPORTATION
DIVISION OF HIGHWAYS

SUBMITTED December 14, 2009

Roger L. Swidzinski
DEPUTY DIRECTOR OF HIGHWAYS, REGION ENGINEER

January 29, 2010
Scott E. Still, P.E./D
Acting ENGINEER OF DESIGN AND ENVIRONMENT

January 29, 2010
Christine M. Reed, D
DIRECTOR OF HIGHWAYS, CHIEF ENGINEER

**PRINTED BY THE AUTHORITY
OF THE STATE OF ILLINOIS**