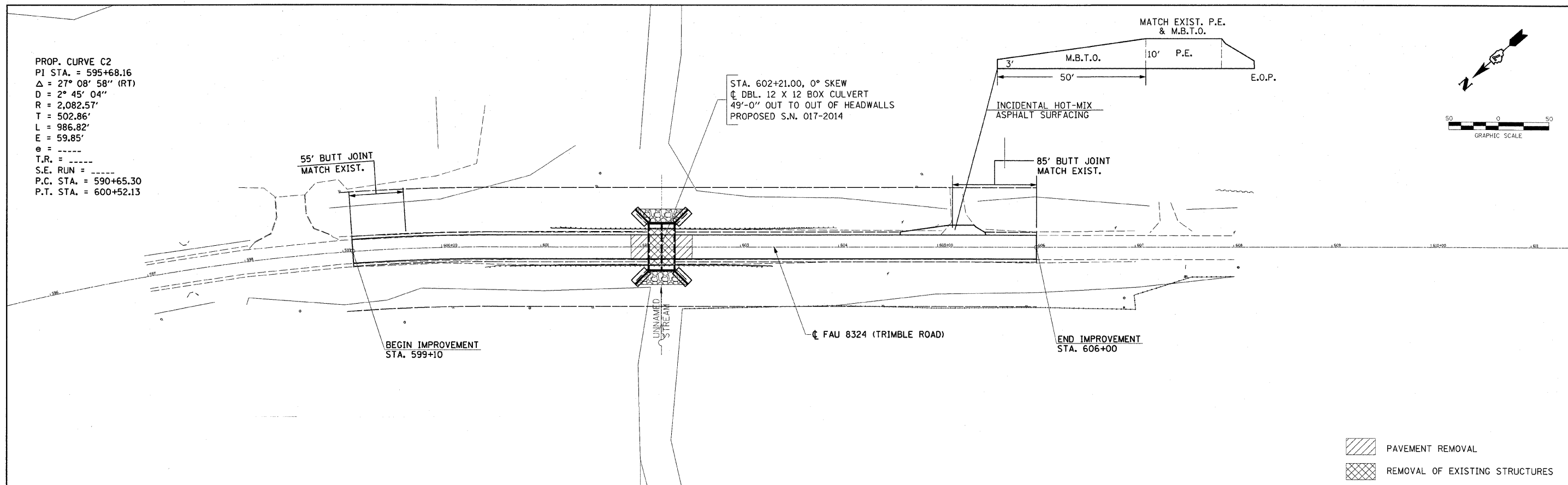
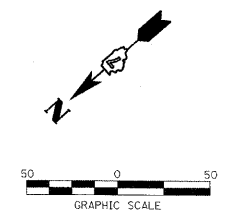
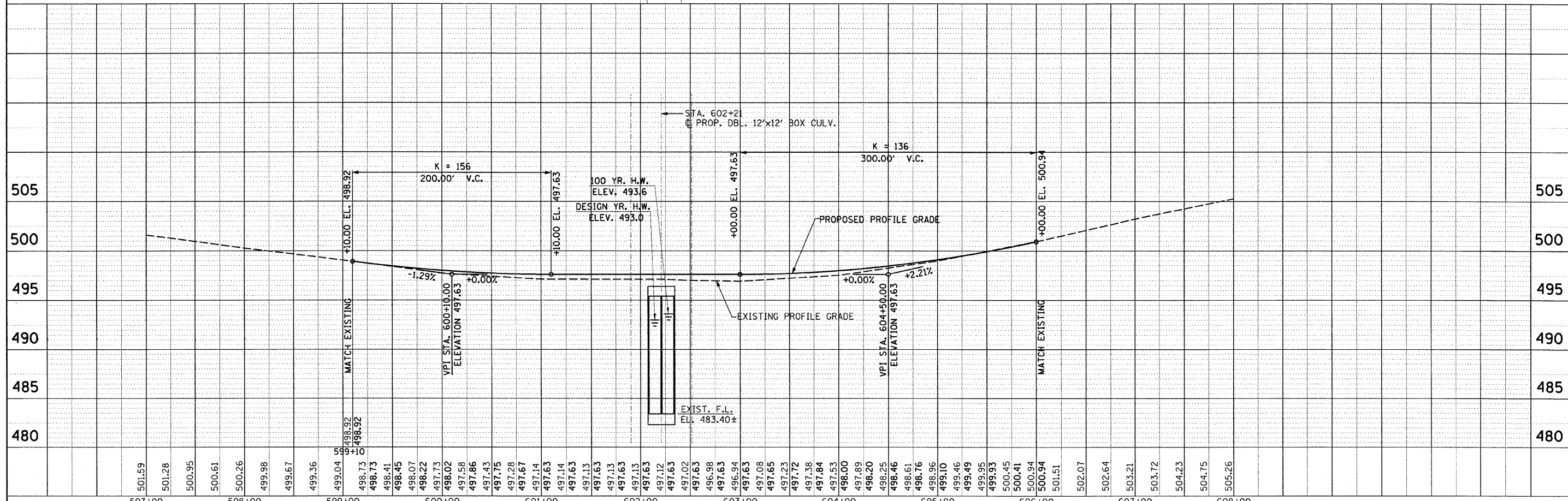


PLAN	SURVEYED	DATE
	PLOTTED	
	CHECKED	
	BY	
	NO. OF WAY CHECKED	
	STRUCTURE NOTATIONS CHKD	
	CADD FILE NAME	

PROP. CURVE C2  
 PI STA. = 595+68.16  
 $\Delta = 27^\circ 08' 58''$  (RT)  
 $D = 2^\circ 45' 04''$   
 $R = 2,082.57'$   
 $T = 502.86'$   
 $L = 986.82'$   
 $E = 59.85'$   
 $e =$   
 $T.R. =$   
 $S.E. RUN =$   
 P.C. STA. = 590+65.30  
 P.T. STA. = 600+52.13



PROFILE	SURVEYED	DATE
	PLOTTED	
	CHECKED	
	BY	
	NO. OF WAY CHECKED	
	STRUCTURE NOTATIONS CHKD	



FILE NAME =	USER NAME = swartzr	DESIGNED - TDN	REVISED -	<b>STATE OF ILLINOIS DEPARTMENT OF TRANSPORTATION</b>	<b>PLAN AND PROFILE FAU ROUTE 8324 (TRIMBLE ROAD) STA. 599+10 TO STA. 606+00</b>		F.A.U. RTE.	SECTION	COUNTY	TOTAL SHEETS	SHEET NO.	
et:\pwork\p1001\SWARTZR\dms38655\SH01.dgn		DRAWN - SRS	REVISED -		8324	(21,8Y)B-1	CRAWFORD	19	8			
PLOT SCALE = 500.00' / IN.		CHECKED -	REVISED -		SCALE: 1"=50'		SHEET NO. 1 OF 1 SHEETS		STA. 596+00 TO STA. 611+00		CONTRACT NO. 74104	
PLOT DATE = 12/14/2009		DATE - 11-11-08	REVISED -		ILLINOIS FED. AID PROJECT							