

Bench Marks: Chiseled square at S.W. wingwall of existing structure. Elevation 497.52  
RR Spike in Telephone Pole at Sta. 589+81, 58.1' Rf. Elevation 509.69

Existing Structure: S.N. 017-0020 built in 1924 as F.A.S. 1696, Section (21, BY) B-1 at Station 602+21.00. Existing deck and abutments were widened in 1955 to include 9" high by 20" wide curbs with Texas Rail. Structure consists of single-span reinforced concrete slab supported by closed RC abutments. The widened portions of the abutments are founded on untreated timber piles. It is unknown if piles exist under the original portions of the abutments. The structure has an overall length of 28'-0" back-to-back of abutments and a width of 40'-4" out-to-out of deck.

Road to be Closed During Construction.

No salvage.

STATE OF ILLINOIS  
DEPARTMENT OF TRANSPORTATION

STATION 602+21.00  
BUILT 2009 BY  
STATE OF ILLINOIS  
F.A.U. 8324 - SEC. (21, BY) B-1  
LOADING HS20-44  
STRUCTURE NO. 017-2014

**NAME PLATE**

See Plan View & Std. 515001

**TOTAL BILL OF MATERIAL**

ITEM	UNIT	TOTAL
Porous Granular Embankment	Cu. Yd.	962
Rockfill-Replacement	Ton	890
Stone Riprap, Class A4	Sq. Yd.	115
Filter Fabric	Sq. Yd.	115
Removal of Existing Structures	Each	1
Structure Excavation	Cu. Yd.	573
Reinforcement Bars	Pound	38770
Reinforcement Bars, Epoxy Coated	Pound	1720
Name Plates	Each	1
Concrete Box Culverts	Cu. Yd.	246.1
Removal and Disposal of Unsuitable Material	Cu. Yd.	434
Geotechnical Fabric for Ground Stabilization	Sq. Yd.	564

**INDEX OF SHEETS**

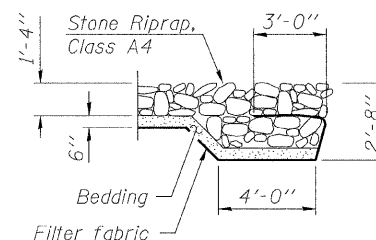
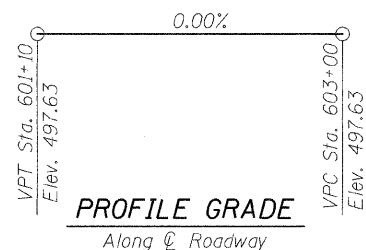
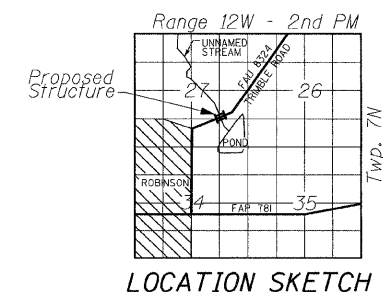
SHEET NO.	DESCRIPTION
1	General Plan
2	General Notes & Structure Details
3	Structure Details
4	Soil Boring No. 1
5	Soil Boring No. 2

**WATERWAY INFORMATION**

Drainage Area = 2.59 Sq. Mi. Existing Low Grade Elev. 496.94 @ Sta. 603+00  
Proposed Low Grade Elev. 497.63 @ Sta. 603+00

Flood	Freq. Yr.	Q C.F.S.	Opening Sq. Ft.		Nat. H.W.E.	Head-Ft.		Headwater El.	
			Exist.	Prop.		Exist.	Prop.	Exist.	Prop.
Design	10	672	185	196	491.5	0.0	0.0	491.5	491.5
Base	50	1039	224	232	493.0	0.4	0.2	493.4	493.2
Overtopping	100	1194	240	246	493.6	0.4	0.3	494.0	493.9
Max. Calc.	500	1563	276	280	495.0	0.6	0.5	495.6	495.5

**GENERAL PLAN**  
**FAU-8324 (TRIMBLE ROAD) OVER**  
**UNNAMED STREAM**  
**SECTION (21, BY) B-1**  
**CRAWFORD COUNTY**  
**STATION 602+21**  
**STRUCTURE NO. 017-2014**



**SECTION A-A**

**LOADING HS20-44**

Allow 50#/sq. ft. for future wearing surface.

**DESIGN SPECIFICATIONS**

2002 AASHTO

**DESIGN STRESSES**

FIELD UNITS

New Construction

$f'_c = 3,500$  psi

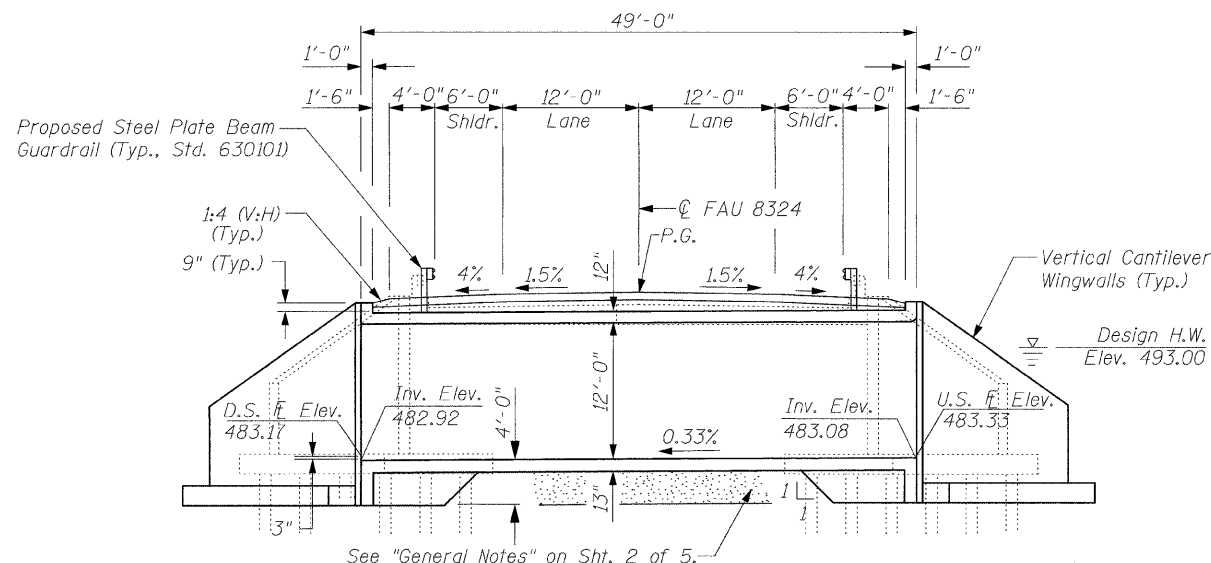
$f_y = 60,000$  psi (reinforcement)

**APPROVED**  
FOR STRUCTURAL ADEQUACY ONLY

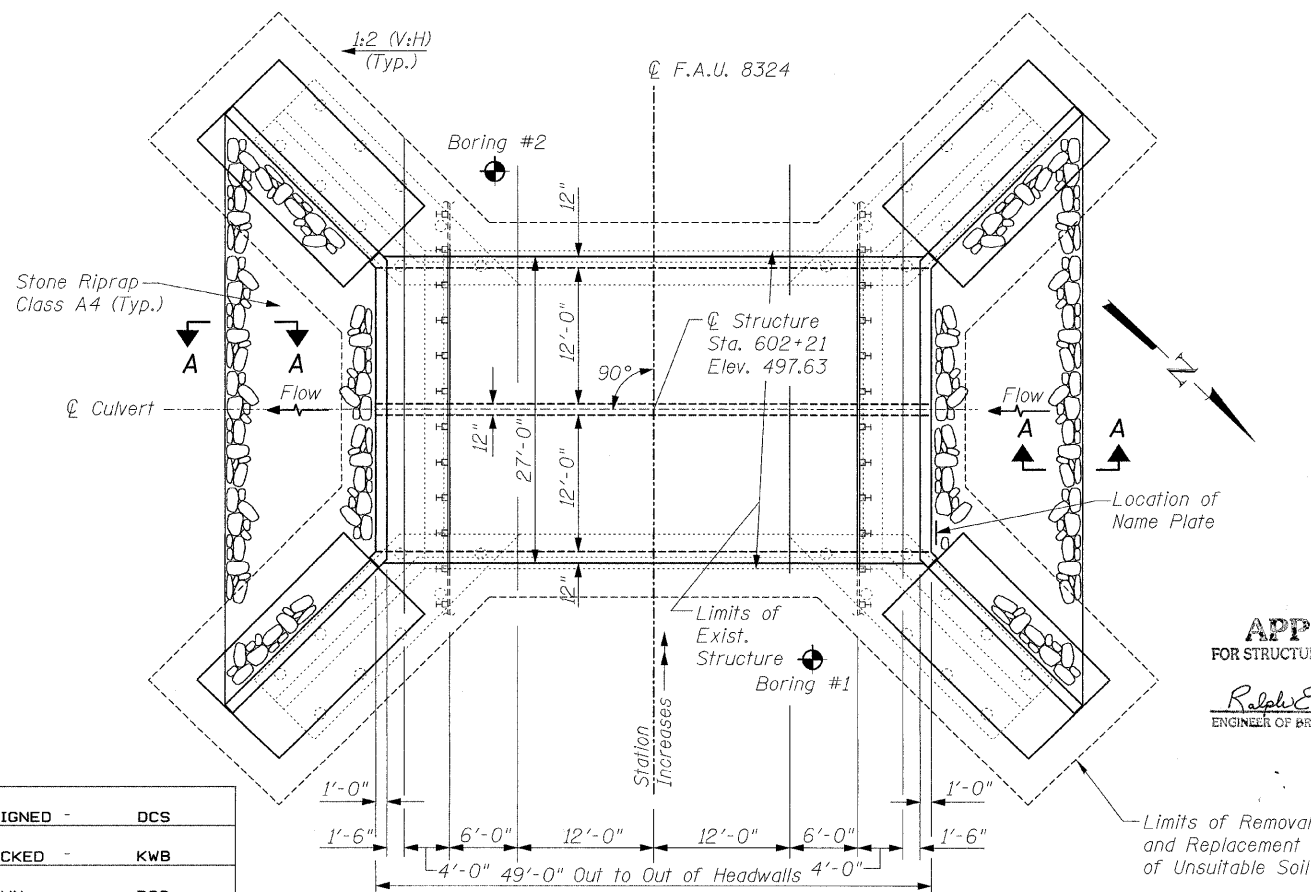
*Ralph E. Anderson* (TS) 1970  
ENGINEER OF BRIDGES AND STRUCTURES



*Keith W. Benting* 1/27/2010  
EXPIRATION DATE: 11-30-2010



**LONGITUDINAL SECTION**



**PLAN**

DESIGNED -	DCS
CHECKED -	KWB
DRAWN -	DCS
CHECKED -	KWB

SHEET NO. 1	F.A.U. RTE.	SECTION	COUNTY	TOTAL SHEETS	SHEET NO.
5 SHEETS	8324	(21, BY) B-1	CRAWFORD	-	10
CONTRACT NO. 74104					
FED. ROAD DIST. NO. - ILLINOIS FED. AID PROJECT					