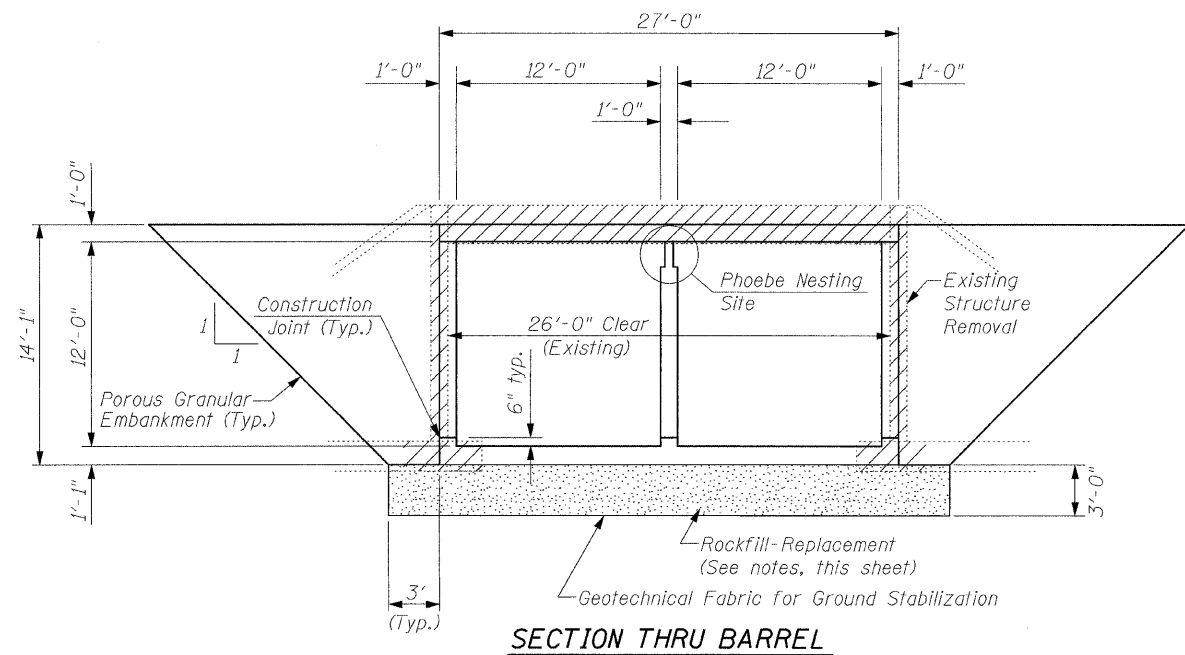
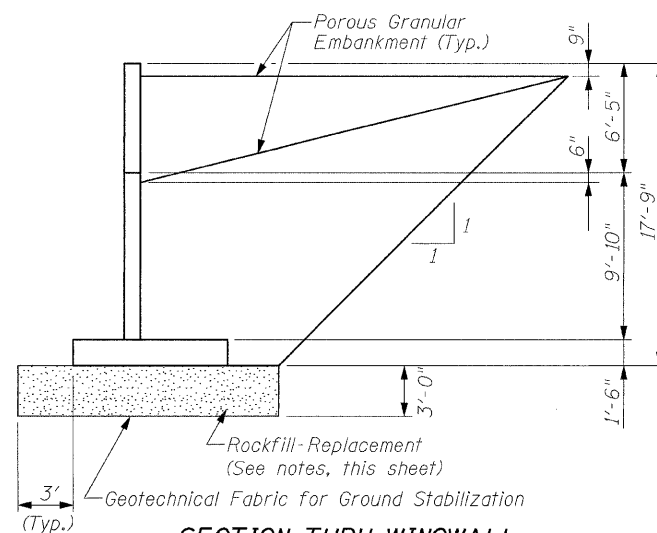


STATE OF ILLINOIS  
DEPARTMENT OF TRANSPORTATION



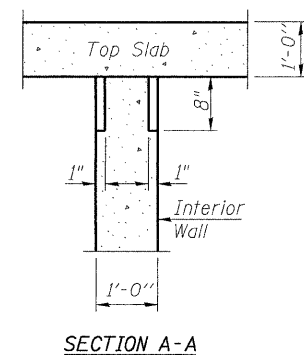
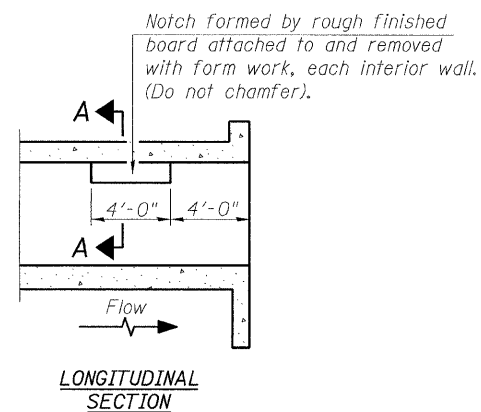
**SECTION THRU BARREL**



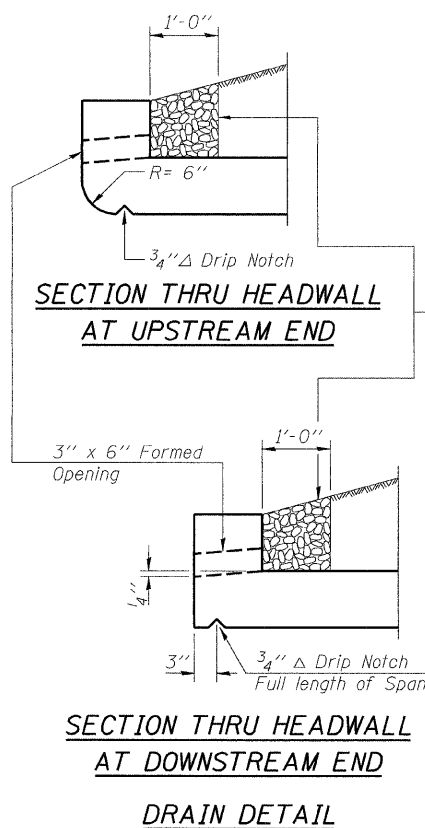
**SECTION THRU WINGWALL**

**GENERAL NOTES**

- A precast concrete culvert alternate will not be allowed.
- Reinforcement bars shall conform to the requirements of ASTM A 706 Gr 60. See Special Provisions.
- Layout of slope protection system may be varied in the field to suit ground conditions as directed by the Engineer.
- Excavation behind existing abutment walls shall be performed to balance front and back soil pressure before removing the existing superstructure.
- Remove approximately three feet of unsuitable soil beneath the footprint of the box culvert and extend three feet beyond the perimeter of the culvert. Replace with Rockfill-Replacement. The limits and quantities of removal and replacement shown are based on the boring data and may be modified by the District Geotechnical and Field Engineers for variable subsurface conditions encountered in the field.
- Exposed edges shall be beveled  $\frac{3}{4}$ " unless otherwise noted.
- The guardrail shall be mounted to the box culvert per Highway Standard 630101, Case IV Mounted on Slab. The guardrail post shall be welded all around to the base plate using  $\frac{3}{16}$ " fillet welds.
- For backfilling and embankment see Standard Specifications.



**PHOEBE NESTING  
SITE DETAILS**  
(Downstream End Only)



Coarse aggregate full length of both headwalls. To be placed by Grading Contractor. Cost included with Concrete Box Culverts.

**GENERAL NOTES AND STRUCTURE DETAILS**  
**FAU-8324 (TRIMBLE ROAD) OVER**  
**UNNAMED STREAM**  
**SECTION (21, BY) B-1**  
**CRAWFORD COUNTY**  
**STATION 602+21**  
**STRUCTURE NO. 017-2014**

DESIGNED -	DCS
CHECKED -	KWB
DRAWN -	REZ
CHECKED -	KWB



SHEET NO. 2 5 SHEETS	F.A.U. RTE. 8324	SECTION (21, BY) B-1	COUNTY CRAWFORD	TOTAL SHEETS -	SHEET NO. 11
	CONTRACT NO. 74104			FED. ROAD DIST. NO. - ILLINOIS FED. AID PROJECT	