

F.A.U. RTE.	SECTION	COUNTY	TOTAL SHEETS	SHEET NO.
8324	(21, BY) B-1	CRAWFORD	19	1
		ILLINOIS	CONTRACT NO. 74104	

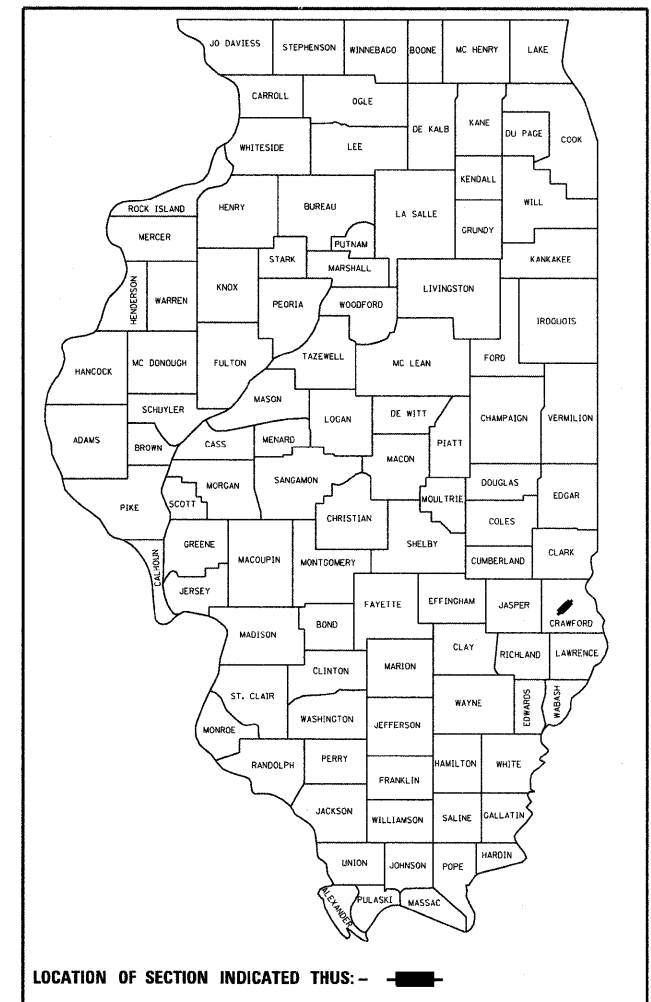
STATE OF ILLINOIS
DEPARTMENT OF TRANSPORTATION
DIVISION OF HIGHWAYS

**PROPOSED
HIGHWAY PLANS**
FAU ROUTE 8324 (TRIMBLE ROAD)
SECTION (21, BY) B-1

**CULVERT REPLACEMENT
CRAWFORD COUNTY**
C-97-068-05

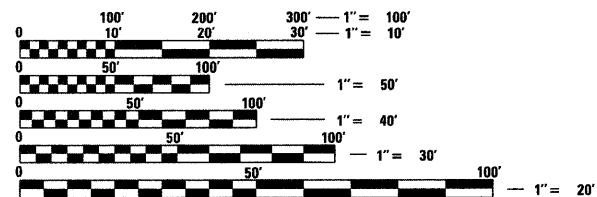
FOR INDEX OF SHEETS, SEE SHEET NO. 2

D-97-033-05



FAU 8324
SECTION (21, BY) B-1
CRAWFORD COUNTY
EXIST. STR. * 017-0020
PROP. STR. * 017-2014
STATION 602+21.00

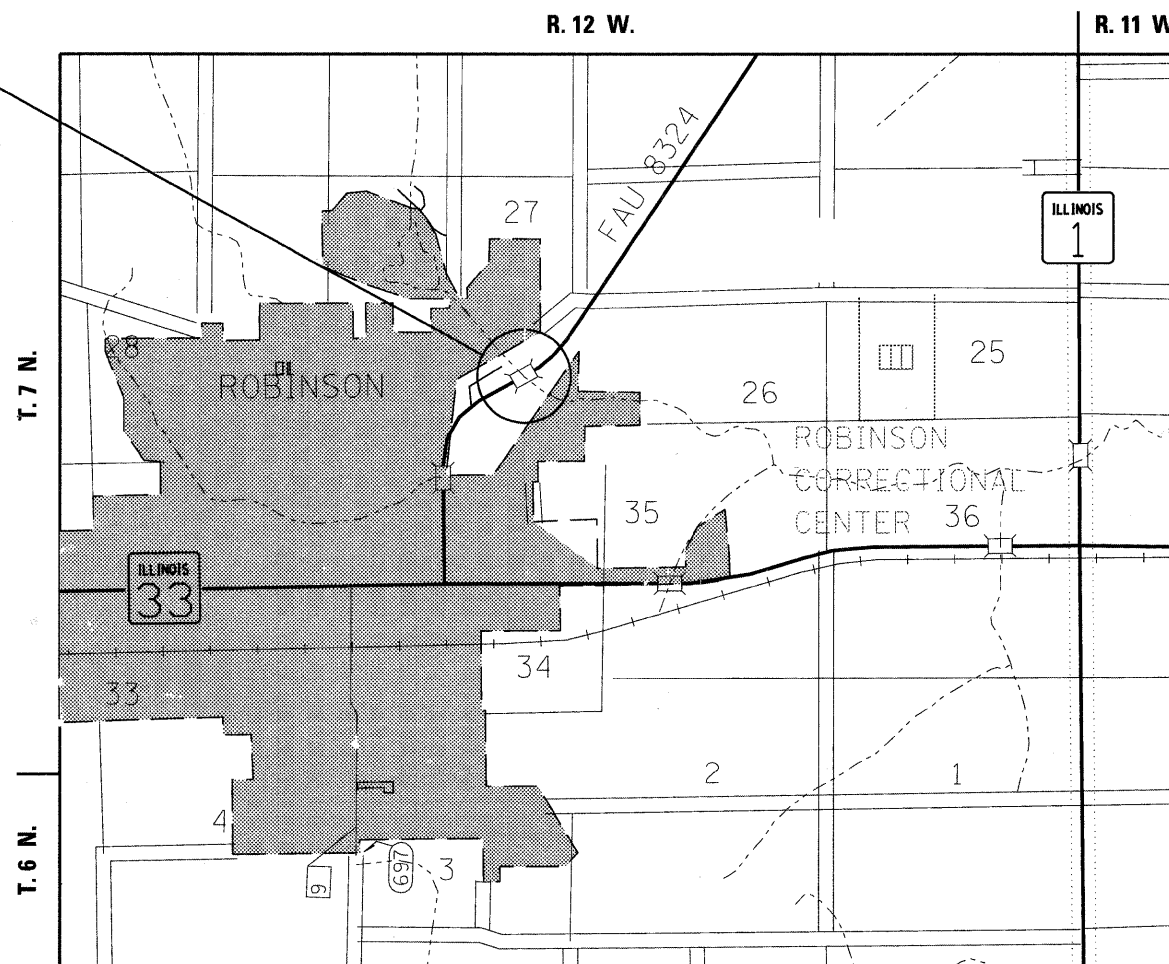
3267 ADT = 2008



FULL SIZE PLANS HAVE BEEN PREPARED USING STANDARD ENGINEERING SCALES. REDUCED SIZED PLANS WILL NOT CONFORM TO STANDARD SCALES. IN MAKING MEASUREMENTS ON REDUCED PLANS, THE ABOVE SCALES MAY BE USED.

J.U.L.I.E.
JOINT UTILITY LOCATION INFORMATION FOR EXCAVATION
1-800-892-0123
OR 811

PROJECT ENGINEER: TOM RONAN
PROJECT MANAGER: KEVIN BRADY
TOWNSHIP: ROBINSON
CONTRACT NO. 74104



GROSS LENGTH = 690 FT. = 0.13 MILE
NET LENGTH = 690 FT. = 0.13 MILE

STATE OF ILLINOIS
DEPARTMENT OF TRANSPORTATION
DIVISION OF HIGHWAYS

SUBMITTED December 14, 2009

Roger L. Swidzinski
DEPUTY DIRECTOR OF HIGHWAYS, REGION ENGINEER

January 29, 2010
Scott E. Still, P.E./D
Acting ENGINEER OF DESIGN AND ENVIRONMENT

January 29, 2010
Christine M. Reed, D
DIRECTOR OF HIGHWAYS, CHIEF ENGINEER

**PRINTED BY THE AUTHORITY
OF THE STATE OF ILLINOIS**

INDEX OF SHEETS

SHEET NO.	ITEM
1	COVER SHEET
2	INDEX OF SHEETS & GENERAL NOTES
3	SUMMARY OF QUANTITIES
4-5	TYPICAL SECTIONS
6	SCHEDULES OF QUANTITIES
7	DETAILS & ALIGNMENT TIES
8	PLAN & PROFILE SHEET
9	EROSION CONTROL DETAIL
10-14	CULVERT DETAILS
15-19	CROSS SECTIONS

THE FOLLOWING STANDARDS ARE A PART OF THESE PLANS AND ARE INCLUDED AFTER SHEET NO. 19:

STD. NO.	DESCRIPTION
000001-05	STANDARD SYMBOLS, ABBREVIATIONS AND PATTERNS
001001-02	AREAS OF REINFORCEMENT BARS
001006	DECIMAL OF AN INCH AND OF A FOOT
280001-05	TEMPORARY EROSION CONTROL SYSTEMS
515001-03	NAME PLATE FOR BRIDGES
630001-08	STEEL PLATE BEAM GUARDRAIL
630101-08	GUARDRAIL MOUNTED ON EXISTING CULVERTS
630301-05	SHOULDER WIDENING FOR TYPE 1 (SPECIAL) GUARDRAIL TERMINALS
635006-03	REFLECTOR AND TERMINAL MARKER PLACEMENT
635011-02	REFLECTOR MARKER AND MOUNTING DETAILS
667101-01	PERMANENT SURVEY MARKERS
701001-02	OFF-ROAD OPERATIONS, 2L, 2W, MORE THAN 15' AWAY
701006-03	OFF-RD OPERATIONS, 2L, 2W, 15' TO 24" FROM PAVEMENT EDGE
701011-02	OFF-RD MOVING OPERATIONS, 2L, 2W, DAY ONLY
701301-03	LANE CLOSURE, 2L, 2W, SHORT TIME OPERATIONS
701311-03	LANE CLOSURE 2L, 2W, MOVING OPERATIONS - DAY ONLY
701901-01	TRAFFIC CONTROL DEVICES
780001-02	TYPICAL PAVEMENT MARKINGS
781001-03	TYPICAL APPLICATION RAISED REFLECTIVE PAVEMENT MARKERS
BLR 21-8	TYPICAL APPLICATION OF TRAFFIC CONTROL DEVICES FOR CONSTRUCTION ON RURAL LOCAL HIGHWAYS

GENERAL NOTES

THIS SECTION SHALL BE CONSTRUCTED IN ACCORDANCE WITH THE PLANS; THE "STANDARD SPECIFICATIONS FOR ROAD AND BRIDGE CONSTRUCTION" ADOPTED JANUARY 1, 2007; AND THE SPECIAL PROVISIONS INCLUDED IN THE PROPOSAL.

THIS PROJECT IS LOCATED ON FAU ROUTE 8324 (TRIMBLE ROAD) IN CRAWFORD COUNTY, APPROXIMATELY 0.8 MILES NORTHEAST OF ROBINSON, AT EXISTING STRUCTURE NUMBER 017-0020. THE WORK INCLUDED IN SECTION (21,BY)B-1 CONSISTS OF REMOVING THE EXISTING SINGLE SPAN CONCRETE SLAB BRIDGE AND REPLACING IT WITH A CAST-IN-PLACE DOUBLE 12 FOOT X 12 FOOT BOX CULVERT, EARTHWORK, FULL-DEPTH HMA PAVEMENT, HOT-MIX ASPHALT RESURFACING, GUARDRAIL, AND ANY OTHER WORK NECESSARY TO COMPLETE THE SECTION.

THE MATERIAL USED FOR AGGREGATE SHOULDERS, TYPE B SHALL BE CRUSHED STONE OR CRUSHED CONCRETE.

THE MATERIAL USED FOR POROUS GRANULAR EMBANKMENT SHALL BE CA-6.

THE TOTAL QUANTITY OF PAINT PAVEMENT MARKING - LINE 4" CONSISTS OF 1,380 FEET OF YELLOW AND 1,380 FEET OF WHITE.

RAISED REFLECTIVE PAVEMENT MARKERS SHALL BE INSTALLED IN ACCORDANCE WITH SECTION 781 OF THE STANDARD SPECIFICATIONS. THE TOTAL QUANTITY OF RAISED REFLECTIVE PAVEMENT MARKERS CONSISTS OF 8 TWO-WAY AMBER MARKERS.

THE RESIDENT ENGINEER SHALL BE THE SOLE JUDGE CONCERNING THE CURING TIME FOR THE VARIOUS HOT-MIX ASPHALT LIFTS.

THE CONTRACTOR SHALL PROVIDE INTERNET ACCESSIBILITY TO THE HOT-MIX ASPHALT PLANT QUALITY CONTROL LAB SO THAT HOT-MIX ASPHALT PLANT REPORTS CAN BE E-MAILED TO THE DISTRICT HEADQUARTERS. THIS WORK SHALL BE INCLUDED IN THE COST OF ALL HOT-MIX ASPHALT ITEMS.

THE CONTRACTOR SHALL USE EITHER RC-70 OR AN EMULSIFIED POLYMER PRIME SS-1HP FOR THE PAY ITEM BITUMINOUS MATERIALS (PRIME COAT).

A UNIFORMLY STRAIGHT SAW CUT SHALL BE MADE AT LOCATIONS WHERE PROPOSED NEW CONSTRUCTION WILL ABUT EXISTING HOT-MIX ASPHALT SURFACES. THE SAW CUT SHALL BE MADE FULL DEPTH THROUGH THE EXISTING SURFACE. THIS WORK WILL BE CONSIDERED INCLUDED IN THE COST OF THE CONTRACT ITEMS INVOLVED AND NO EXTRA COMPENSATION WILL BE ALLOWED.

THE TREES LISTED IN THE TREE SCHEDULE SHALL BE APPROVED AND HAND PLANTED AT LOCATIONS AS DIRECTED BY THE ROADSIDE MAINTENANCE TECHNICIAN, PHIL NOSBISCH, (217)-342-8249. THE CONTRACTOR SHALL BE REQUIRED TO GIVE TWO WEEKS NOTICE TO SCHEDULE A TIME FOR THE LOCATIONS TO BE STAKED AND ON THE SAME DAY THE TREES SHALL BE DELIVERED TO THE JOBSITE FOR ACCEPTANCE OF THE PLANTING MATERIAL BY THE ROADSIDE MAINTENANCE TECHNICIAN.

THE LOCATIONS AND/OR DEPTHS OF UNDERGROUND UTILITIES SHOWN HAVE BEEN TAKEN FROM INFORMATION FURNISHED BY THE UTILITY OWNERS AND MUST BE CONSIDERED APPROXIMATE. FIELD MARKINGS OF UTILITIES IN CRITICAL AREAS MAY BE OBTAINED BY PROVIDING A MINIMUM OF 96 HOURS ADVANCE NOTICE THROUGH THE J.U.L.I.E. SYSTEM BY CALLING 800-892-0123.

THE FOLLOWING MIXTURE REQUIREMENTS ARE APPLICABLE FOR THIS PROJECT:

MIXTURE USE:	SURFACE COURSE (1 1/2")
APPLICATION:	HOT-MIX ASPHALT SURFACE COURSE, MIX "C", N70
PG GRADE:	PG 64-22
DESIGN AIR VOIDS:	4.0% @ NDESIGN = 70
MIXTURE COMPOSITION:	IL-9.5
FRICTION AGGREGATE:	MIXTURE C

MIXTURE USE:	BINDER COURSE
APPLICATION:	HOT-MIX ASPHALT BINDER COURSE, IL 19.0, N70
PG GRADE:	PG 64-22
DESIGN AIR VOIDS:	4.0% @ NDESIGN = 70
MIXTURE COMPOSITION:	IL-19.0
FRICTION AGGREGATE:	N/A

THE FOLLOWING RATES OF APPLICATION HAVE BEEN USED IN THE CALCULATING PLAN QUANTITIES:

GRANULAR MATERIAL	2.05 TONS/CU YD
BITUMINOUS MATERIALS (PRIME COAT)	0.10 GAL/SQ YD
AGGREGATE (PRIME COAT)	2.00 LBS/SQ YD
HOT-MIX ASPHALT	112 LBS/SQ YD/IN

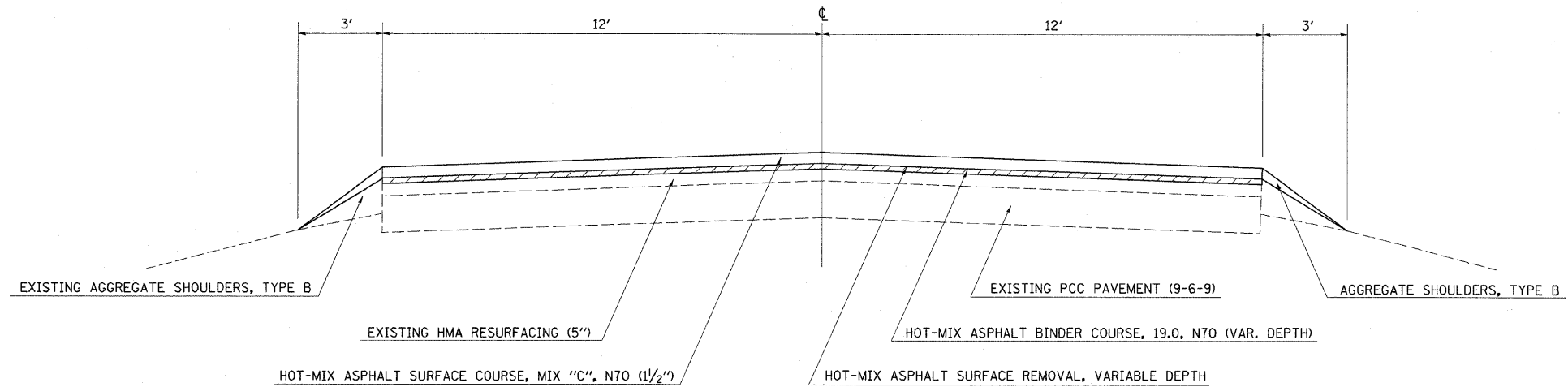
FILE NAME =	USER NAME = *USER*	DESIGNED -	REVISED -	STATE OF ILLINOIS DEPARTMENT OF TRANSPORTATION	INDEX OF SHEETS GENERAL NOTES			F.A.U. RTE. 8324	SECTION (21,BY)B-1	COUNTY CRAWFORD	TOTAL SHEETS 19	SHEET NO. 2
FILEL		DRAWN -	REVISED -		SCALE: NA	SHEET NO. 1	OF 1	SHEETS	STA.	TO STA.	CONTRACT NO. 74104	
	PLOT SCALE = *SCALE*	CHECKED -	REVISED -		ILLINOIS FED. AID PROJECT							
	PLOT DATE = *DATE*	DATE -	REVISED -									

SUMMARY OF QUANTITIES			100% STATE	CONSTRUCTION TYPE CODE	
CODE NO	ITEM	UNIT	TOTAL QUANTITIES	X028-2A	I000
20100110	TREE REMOVAL (6 TO 15 UNITS DIAMETER)	UNIT	272		272
20100210	TREE REMOVAL (OVER 15 UNITS DIAMETER)	UNIT	143		143
20200100	EARTH EXCAVATION	CU YD	100		100
20201200	REMOVAL AND DISPOSAL OF UNSUITABLE MATERIAL	CU YD	434	434	
20400800	FURNISHED EXCAVATION	CU YD	294		294
20700220	POROUS GRANULAR EMBANKMENT	CU YD	962	962	
21001000	GEOTECHNICAL FABRIC FOR GROUND STABILIZATION	SQ YD	564	564	
* 25001000	SEEDING, CLASS 2 (SPECIAL)	ACRE	0.5		0.5
28000250	TEMPORARY EROSION CONTROL SEEDING	POUND	48		48
28000305	TEMPORARY DITCH CHECKS	FOOT	100		100
28000400	PERIMETER EROSION BARRIER	FOOT	765		765
28100107	STONE RIPRAP, CLASS A4	SQ YD	115	115	
28200200	FILTER FABRIC	SQ YD	115	115	
40600100	BITUMINOUS MATERIALS (PRIME COAT)	GALLON	191		191
40600300	AGGREGATE (PRIME COAT)	TON	4		4
40600982	HOT-MIX ASPHALT SURFACE REMOVAL - BUTT JOINT	SQ YD	373		373
40600990	TEMPORARY RAMP	SQ YD	27		27
40603085	HOT-MIX ASPHALT BINDER COURSE, IL-19.0, N70	TON	425		425
40603315	HOT-MIX ASPHALT SURFACE COURSE, MIX "C", N70	TON	153		153
40701961	HOT-MIX ASPHALT PAVEMENT (FULL-DEPTH), 14"	SQ YD	91		91
40800050	INCIDENTAL HOT-MIX ASPHALT SURFACING	TON	7		7
44000100	PAVEMENT REMOVAL	SQ YD	91		91
44000198	HOT-MIX ASPHALT SURFACE REMOVAL, VARIABLE DEPTH	SQ YD	1304		1304
48101200	AGGREGATE SHOULDERS, TYPE B	TON	79		79
50100100	REMOVAL OF EXISTING STRUCTURES	EACH	1	1	
50200100	STRUCTURE EXCAVATION	CU YD	573	573	
50800105	REINFORCEMENT BARS	POUND	38,700	38,700	

SUMMARY OF QUANTITIES (Cont'd)			100% STATE	CONSTRUCTION TYPE CODE	
CODE NO	ITEM	UNIT	TOTAL QUANTITIES	X028-2A	I000
50800205	REINFORCEMENT BARS, EPOXY COATED	POUND	1720	1720	
51500100	NAME PLATES	EACH	1	1	
54003000	CONCRETE BOX CULVERTS	CU YD	246.1	246.1	
* 63000001	STEEL PLATE BEAM GUARD RAIL, TYPE A, 6 FOOT POSTS	FOOT	250		250
* 63000025	STEEL PLATE BEAM GUARD RAIL, ATTACHED TO STRUCTURES	FOOT	54		54
* 63100167	TRAFFIC BARRIER TERMINAL, TYPE 1 (SPECIAL) TANGENT	EACH	4		4
63200310	GUARDRAIL REMOVAL	FOOT	550		550
66700205	PERMANENT SURVEY MARKERS, TYPE I	EACH	2		2
67000500	ENGINEER'S FIELD OFFICE, TYPE B	CAL MO	5	5	
67100100	MOBILIZATION	L SUM	1	0.5	0.5
70101830	TRAFFIC CONTROL AND PROTECTION, STANDARD BLR 21	L SUM	1	1	
70106800	CHANGEABLE MESSAGE SIGN	CAL MO	4	4	
70300100	SHORT-TERM PAVEMENT MARKING	FOOT	68		68
70300220	TEMPORARY PAVEMENT MARKING - LINE 4"	FOOT	2760		2760
70301000	WORK ZONE PAVEMENT MARKING REMOVAL	SQ FT	23		23
* 78001110	PAINT PAVEMENT MARKING - LINE 4"	FOOT	2760		2760
* 78100100	RAISED REFLECTIVE PAVEMENT MARKER	EACH	9		9
* 78200410	GUARDRAIL MARKERS, TYPE A	EACH	6		6
* 78201000	TERMINAL MARKER - DIRECT APPLIED	EACH	4		4
* A2001016	TREE, ACER RUBRUM (RED MAPLE), 2" CALIPER, BALLED AND BURLAPPED	EACH	9		9
* A2001716	TREE, ACER SACCHARUM (SUGAR MAPLE), 2" CALIPER, BALLED AND BURLAPPED	EACH	9		9
* A2007116	TREE, QUERCUS RUBRA (RED OAK), 2" CALIPER, BALLED AND BURLAPPED	EACH	9		9
* D2002972	EVERGREEN, PINUS STROBUS (EASTERN WHITE PINE), 6' HEIGHT, BALLED AND BURLAPPED	EACH	9		9
* Z0054505	ROCK FILL - REPLACEMENT	TON	890	890	

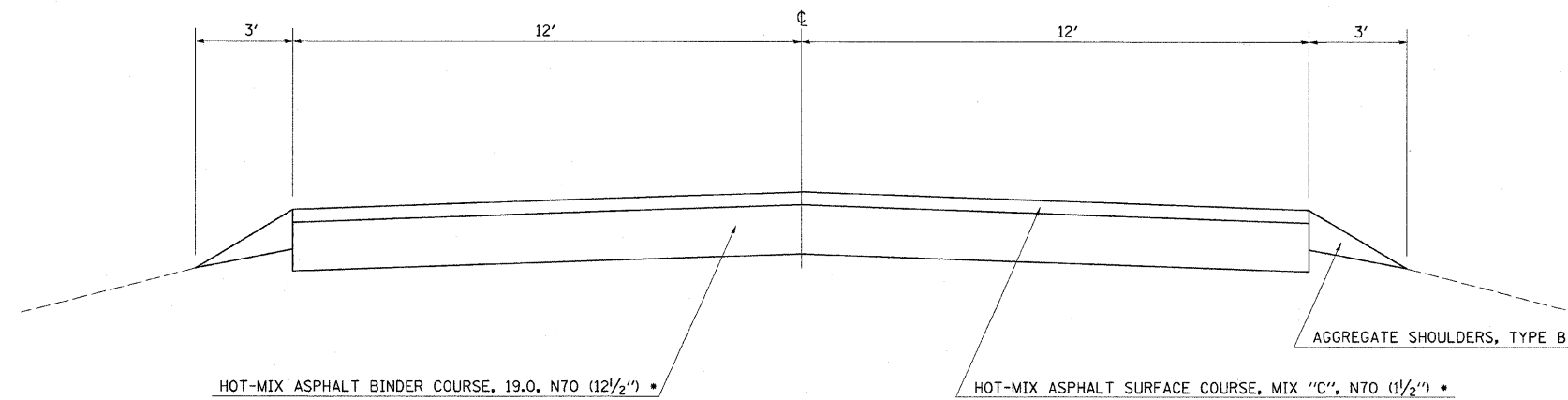
TYPICAL SECTION

STA 599+10 TO STA 601+90.50
STA 602+51.50 TO STA 606+00



TYPICAL SECTION

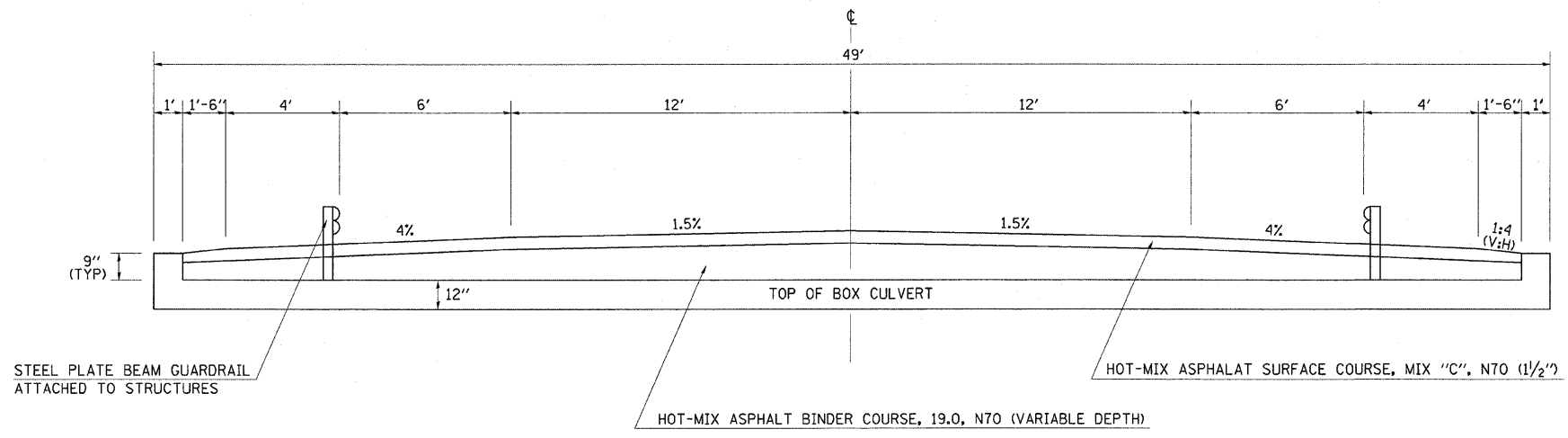
STA 601+90.50 TO STA 602+07.50
STA 602+34.50 TO STA 602+51.50



• HOT-MIX ASPHALT PAVEMENT (FULL-DEPTH), 14"

FILE NAME =	USER NAME = swartzrw	DESIGNED -	REVISED -	STATE OF ILLINOIS DEPARTMENT OF TRANSPORTATION	TYPICAL CROSS SECTIONS			F.A.U. RTE.	SECTION	COUNTY	TOTAL SHEETS	SHEET NO.
cr\pv\work\PWIDOT\SWARTZRW\2121446\d7	4104-shr-typicals.dgn	DRAWN -	REVISED -		8324	(21, BY)B-1	CRAWFORD	19	4			
	PLOT SCALE = 20.0000' / 1" IN.	CHECKED -	REVISED -		CONTRACT NO. 74104			ILLINOIS FED. AID PROJECT				
	PLOT DATE = 12/14/2009	DATE -	REVISED -		SCALE: NA	SHEET NO. 1 OF 2 SHEETS	STA.	TO STA.				

TYPICAL SECTION
 STA 602+07.50 TO STA 602+34.50



FILE NAME =	USER NAME = swartzw	DESIGNED -	REVISED -	STATE OF ILLINOIS DEPARTMENT OF TRANSPORTATION	TYPICAL CROSS SECTIONS			F.A.U. RTE.	SECTION	COUNTY	TOTAL SHEETS	SHEET NO.
cr:\pw_work\FWIDOT\SWARTZRW\d0121446\d7	4184-shr-typical.sdg	DRAWN -	REVISED -		8324	(21, BY) B-1	CRAWFORD	19	5			
	PLOT SCALE = 20.0000' / IN.	CHECKED -	REVISED -		SCALE: NA SHEET NO. 2 OF 2 SHEETS STA. TO STA.			CONTRACT NO. 74104				
	PLOT DATE = 12/14/2009	DATE -	REVISED -		ILLINOIS FED. AID PROJECT							

RESURFACING SCHEDULE		LENGTH	PAVEMENT WIDTH	AREA	HOT-MIX ASPHALT SURFACE REMOVAL - BUTT JOINT	HOT-MIX ASPHALT SURFACE REMOVAL, VARIABLE DEPTH	PAVEMENT REMOVAL	HOT-MIX ASPHALT PAVEMENT (FULL-DEPTH), 14"	BITUMINOUS MATERIALS (PRIME COAT)	AGGREGATE (PRIME COAT)	HOT-MIX ASPHALT BINDER COURSE, IL-19.0, N70	HOT-MIX ASPHALT SURFACE COURSE, MIX "C", N70	AGGREGATE SHOULDERS, TYPE B	TEMPORARY RAMP	
STATION	TO STATION	FOOT	FOOT	SQ YD	SQ YD	SQ YD	SQ YD	SQ YD	GALLON	TON	TON	TON	TON	SQ YD	
599+10.00	TO 599+65.00	55.00	24.0	146.7	146.7	0.0	0.0	0.0	14.7	0.3	0.0	12.4	6.8	13.3	
599+65.00	TO 601+90.50	225.50	24.0	601.3	0.0	601.3	0.0	0.0	60.1	1.2	126.9	50.8	27.8	0.0	
601+90.50	TO 602+07.50	17.00	24.0	45.3	0.0	0.0	45.3	45.3	4.5	0.1	0.0	0.0	2.1	0.0	
602+07.50	TO 602+34.50	27.00	24.0	72.0	0.0	0.0	0.0	0.0	14.1	0.3	126.3	11.8	0.0	0.0	
602+34.50	TO 602+51.50	17.00	24.0	45.3	0.0	0.0	45.3	45.3	4.5	0.1	0.0	0.0	2.1	0.0	
602+51.50	TO 603+00.00	48.50	24.0	129.3	0.0	129.3	0.0	0.0	12.9	0.3	49.8	10.9	6.0	0.0	
603+00.00	TO 604+00.00	100.00	24.0	266.7	0.0	266.7	0.0	0.0	26.7	0.5	84.0	22.5	12.3	0.0	
604+00.00	TO 605+15.00	115.00	24.0	306.7	0.0	306.7	0.0	0.0	30.7	0.6	38.1	25.9	11.1	0.0	
605+15.00	TO 606+00.00	85.00	24.0	226.7	226.7	0.0	0.0	0.0	22.7	0.5	0.0	19.1	10.5	13.3	
TOTALS =					1840.0	373.0	1304.0	91.0	91.0	191.0	4.0	425.0	153.0	79.0	27.0

GUARDRAIL SCHEDULE						
LOCATION	GUARDRAIL REMOVAL	TRAFFIC BARRIER TERMINAL TYPE 1, SPECIAL (TANGENT)	STEEL PLATE BEAM GUARD RAIL, TYPE A, 6 FOOT POSTS	STEEL PLATE BEAM GUARDRAIL, ATTACHED TO STRUCTURES	GUARDRAIL MARKERS, TYPE A	TERMINAL MARKERS - DIRECT APPLIED
	FOOT	EACH	FOOT	FOOT	EACH	EACH
NORTHEAST CORNER	86.0	1	37.5		1	1
SOUTHEAST CORNER	161.0	1	87.5		2	1
EAST SIDE OF CULVERT	28.0			27.0		
WEST SIDE OF CULVERT	28.0			27.0		
NORTHWEST CORNER	161.0	1	87.5		2	1
SOUTHWEST CORNER	86.0	1	37.5		1	1
TOTALS=	550.0	4	250.0	54.0	6	4

PAVEMENT MARKING SCHEDULE						
STATION TO STATION	LENGTH	PAINT PAVEMENT MARKING - LINE 4"	TEMPORARY PAVEMENT MARKING - LINE 4"	SHORT-TERM PAVEMENT MARKING	WORK ZONE PAVEMENT MARKING REMOVAL	RAISED REFLECTIVE PAVEMENT MARKER
	FOOT	FOOT	FOOT	FOOT	SQ FT	EACH
599+10.00 TO 599+65.00	55.0	220.0	220.0	4.0	1.8	1.0
599+65.00 TO 601+90.50	225.5	902.0	902.0	24.0	7.5	3.0
601+90.50 TO 602+07.00	16.5	66.0	66.0	0.0	0.6	0.0
602+07.00 TO 602+35.00	28.0	112.0	112.0	4.0	0.9	1.0
602+35.00 TO 602+51.50	16.5	66.0	66.0	0.0	0.6	0.0
602+51.50 TO 603+00.00	48.5	194.0	194.0	4.0	1.6	1.0
603+00.00 TO 604+00.00	100.0	400.0	400.0	12.0	3.3	1.0
604+00.00 TO 605+15.00	115.0	460.0	460.0	12.0	3.8	1.0
605+15.00 TO 606+00.00	85.0	340.0	340.0	8.0	2.8	1.0
TOTALS =		2760.0	2760.0	68.0	23.0	9.0

EARTHWORK SCHEDULE				
STATION TO STATION	EARTH EXCAVATION	EARTH EXCAVATION ADJUSTED FOR SHRINKAGE (25%)	EARTH FILL	EARTHWORK BALANCE, WASTE (+) OR SHORTAGE (-)
	CU YD	CU YD	CU YD	CU YD
600+00.00 TO 600+50.00	0.3	0.2	5.0	-4.8
600+50.00 TO 601+00.00	0.3	0.2	16.5	-16.3
601+00.00 TO 601+50.00	0.0	0.0	31.5	-31.5
601+50.00 TO 601+91.00	4.6	3.5	42.1	-38.6
601+91.00 TO 602+07.50	3.7	2.8	20.7	-17.9
BRIDGE OMISSION				
602+34.50 TO 602+51.0	12.0	9.0	24.4	-15.4
602+51.00 TO 603+00.0	39.7	29.7	110.7	-81.0
603+00.00 TO 603+50.0	29.5	22.2	96.7	-74.5
603+50.00 TO 604+00.0	8.4	6.3	21.0	-14.7
604+00.00 TO 604+50.0	1.1	0.8	0.3	0.6
TOTALS =	100.0	75.0	369.0	-294.0

SEEDING & FERTILIZER SCHEDULE							
STATION TO STATION	SEEDING, CLASS 2 (SPECIAL)	TEMPORARY EROSION CONTROL SEEDING	NITROGEN FERTILIZER NURTIENT *	PHOSPHORUS FERTILIZER NURTIENT *	POTASSIUM FERTILIZER NURTIENT *	MULCH, METHOD 2 *	AGRICULTURAL GROUND LIMESTONE *
	ACRE	POUND	POUND	POUND	POUND	ACRE	TON
600+00.0 TO 600+50.0	0.02	2.00	1.80	1.80	1.80	0.02	0.04
600+50.0 TO 601+00.0	0.05	5.00	4.50	4.50	4.50	0.05	0.10
601+00.0 TO 601+50.0	0.06	6.00	5.40	5.40	5.40	0.06	0.12
601+50.0 TO 601+91.0	0.05	5.00	4.50	4.50	4.50	0.05	0.10
601+91.0 TO 602+07.5	0.02	2.00	1.80	1.80	1.80	0.02	0.04
602+34.5 TO 602+51.0	0.02	2.00	1.80	1.80	1.80	0.02	0.04
602+51.0 TO 603+00.0	0.10	10.00	9.00	9.00	9.00	0.10	0.20
603+00.0 TO 603+50.0	0.10	10.00	9.00	9.00	9.00	0.10	0.20
603+50.0 TO 604+00.0	0.05	5.00	4.50	4.50	4.50	0.05	0.10
604+00.0 TO 604+50.0	0.01	1.00	0.90	0.90	0.90	0.01	0.02
TOTALS =	0.50	48.00	43.00	43.00	43.00	0.50	1.00

* NOT A PAY ITEM; FOR INFORMATION ONLY

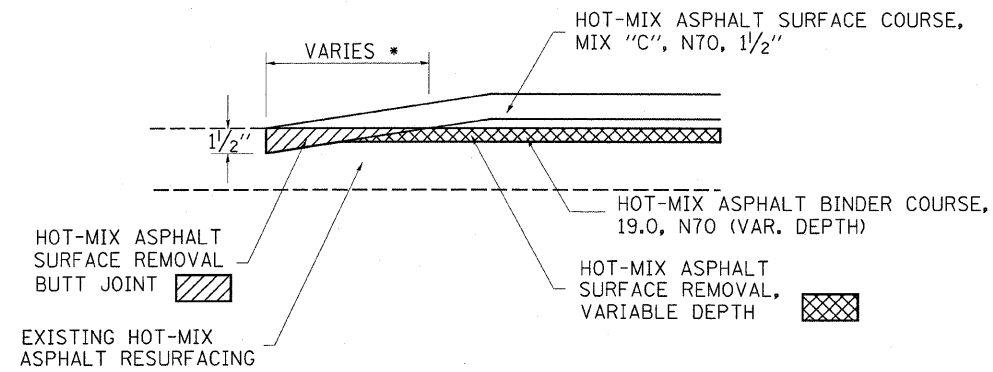
FILE NAME =	USER NAME = swartz*	DESIGNED -	REVISED -
c:\p\work\PIWIDOT\SWARTZRW\d0121446\d7	4184-sht-sch.dgn	DRAWN -	REVISED -
PLOT SCALE = 20.0000' / IN.		CHECKED -	REVISED -
PLOT DATE = 12/14/2009		DATE -	REVISED -

STATE OF ILLINOIS
DEPARTMENT OF TRANSPORTATION

SCHEDULE OF QUANTITIES

SCALE: NA SHEET NO. 1 OF 1 SHEETS STA. TO STA.

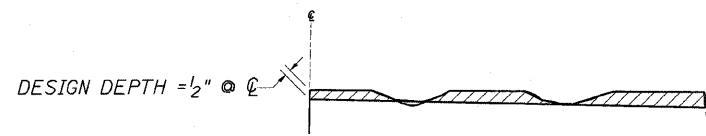
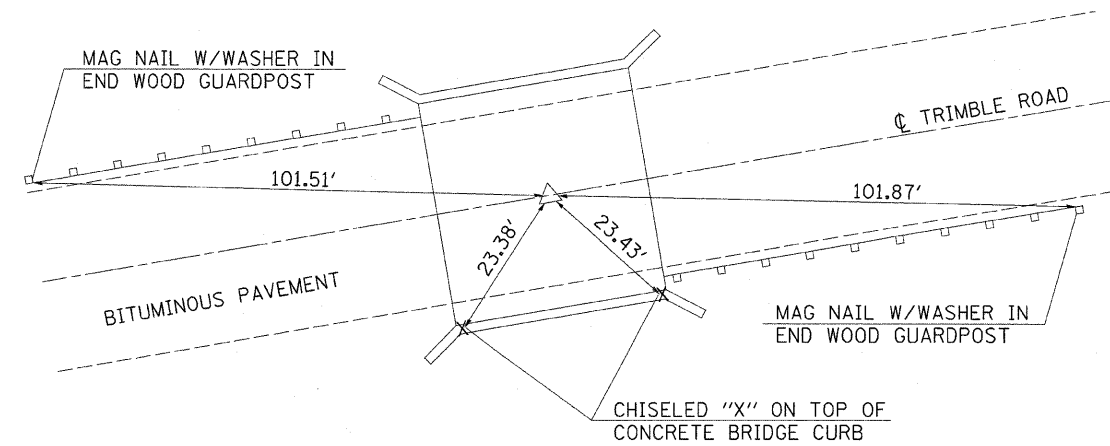
F.A.U. RTE.	SECTION	COUNTY	TOTAL SHEETS	SHEET NO.
8324	(21,8Y)B-1	CRAWFORD	19	6
CONTRACT NO. 74104				
ILLINOIS FED. AID PROJECT				



BUTT JOINT DETAIL

STA. 599+10 TO STA. 599+65 * 55'
 STA. 605+15 TO STA. 606+00 * 85'

**P.O.T. STA. 602+21.00
 (CENTER OF BRIDGE)**

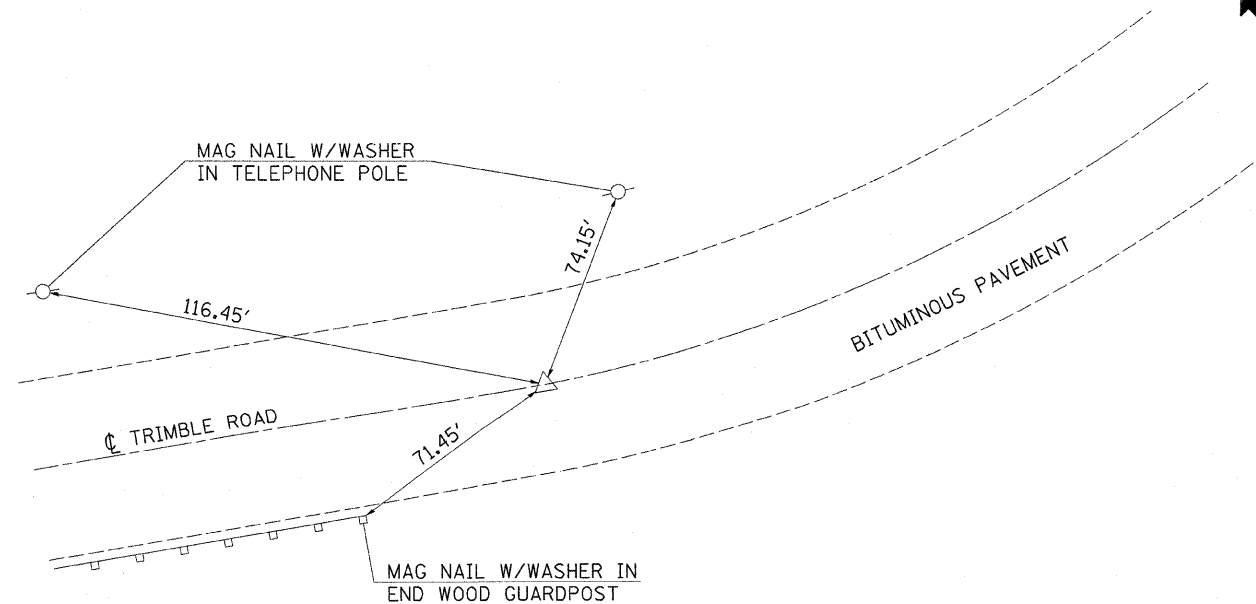


NOTES:

1. MILLING SHALL BE DONE TO ATTAIN A 3/16" /' SLOPE IN CROWN SECTIONS
2. EXISTING S.E. AND S.E. TRANSITIONS SHALL BE MAINTAINED UNLESS OTHERWISE SHOWN ON THE PLANS.
3. MILLING TO THE BOTTOM OF WHEEL RUTS SHALL NOT BE NECESSARY UNLESS REQUIRED TO OBTAIN SLOPE OR THE DESIGN DEPTH AT CENTERLINE.
4. THE AVERAGE DEPTH OF MILLING IS ESTIMATED TO BE 1/2" BUT MAY VARY IN ISOLATED LOCATIONS.

HOT-MIX ASPHALT SURFACE REMOVAL (VARIABLE DEPTH) DETAIL

P.T. STA. 600+52.13



FILE NAME =	USER NAME = swartzw	DESIGNED -	REVISED -
c:\pwwork\pwwidot\swartzw\d0121446\d7	4104-shr-details.dgn	DRAWN -	REVISED -
	PLOT SCALE = 20.0000 ' / IN.	CHECKED -	REVISED -
	PLOT DATE = 12/14/2009	DATE -	REVISED -

**STATE OF ILLINOIS
 DEPARTMENT OF TRANSPORTATION**

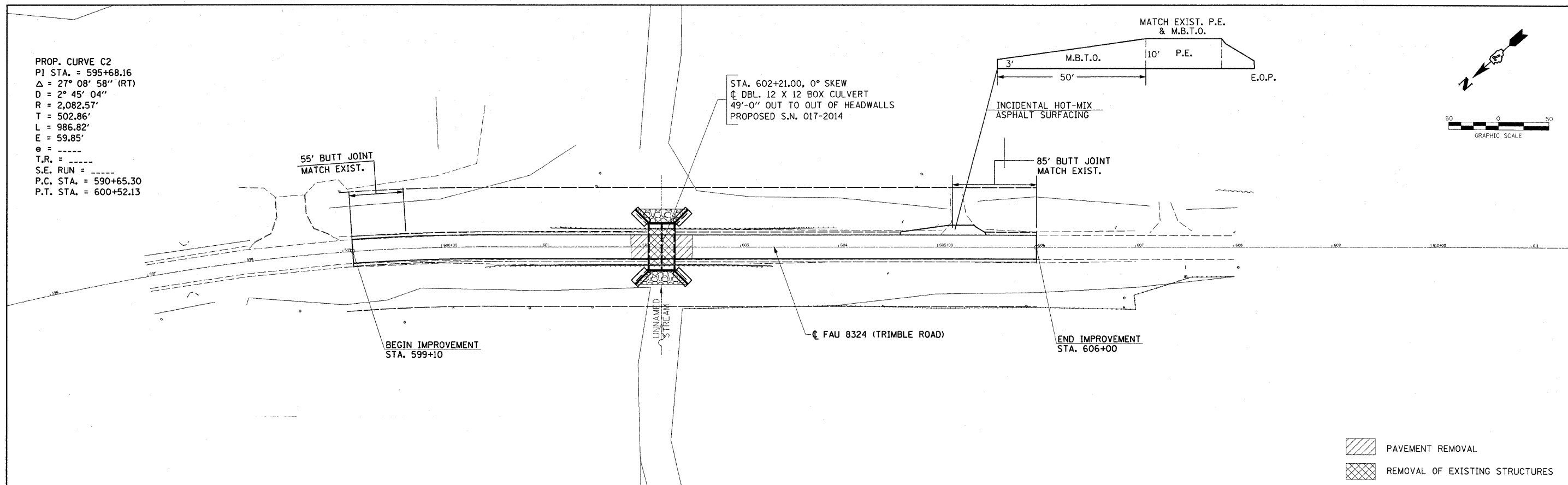
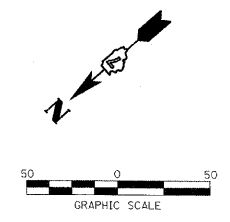
DETAILS AND TIE POINTS / PERMANENT SURVEY MARKERS

SCALE: NA SHEET NO. 1 OF 1 SHEETS STA. TO STA.

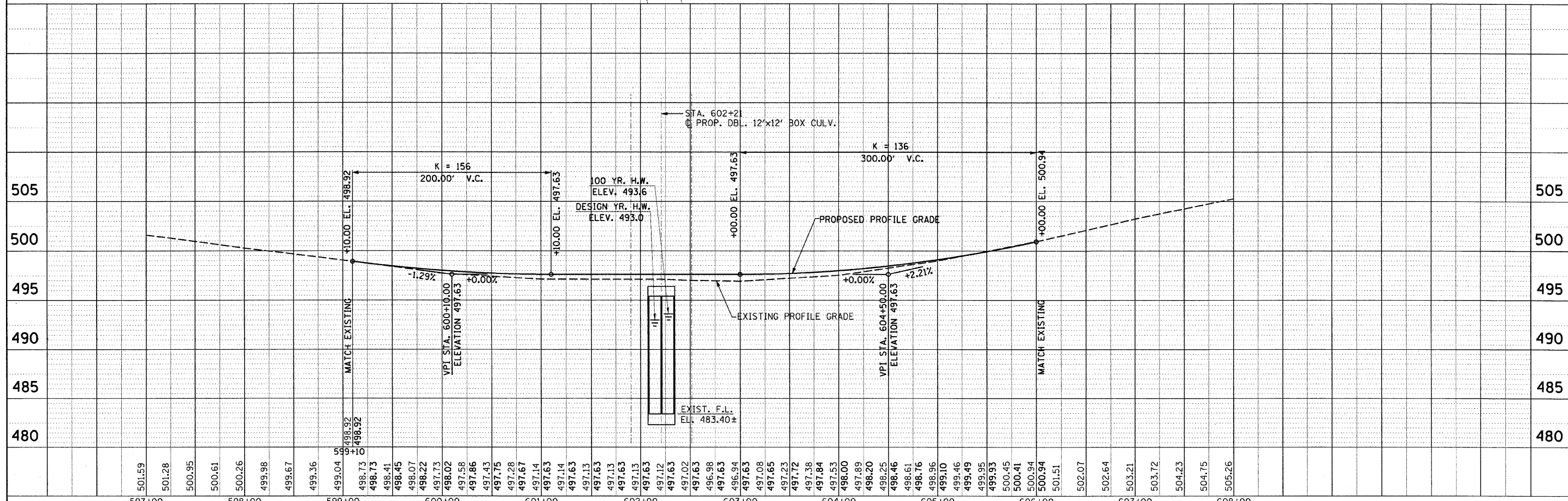
F.A.U. RTE.	SECTION	COUNTY	TOTAL SHEETS	SHEET NO.
8324	(21,8Y)B-1	CRAWFORD	19	7
CONTRACT NO. 74104				
ILLINOIS FED. AID PROJECT				

PLAN	SURVEYED	DATE
	PLOTTED	
	CHECKED	
	BY	
	NO. OF WAY CHECKED	
	CADD FILE NAME	

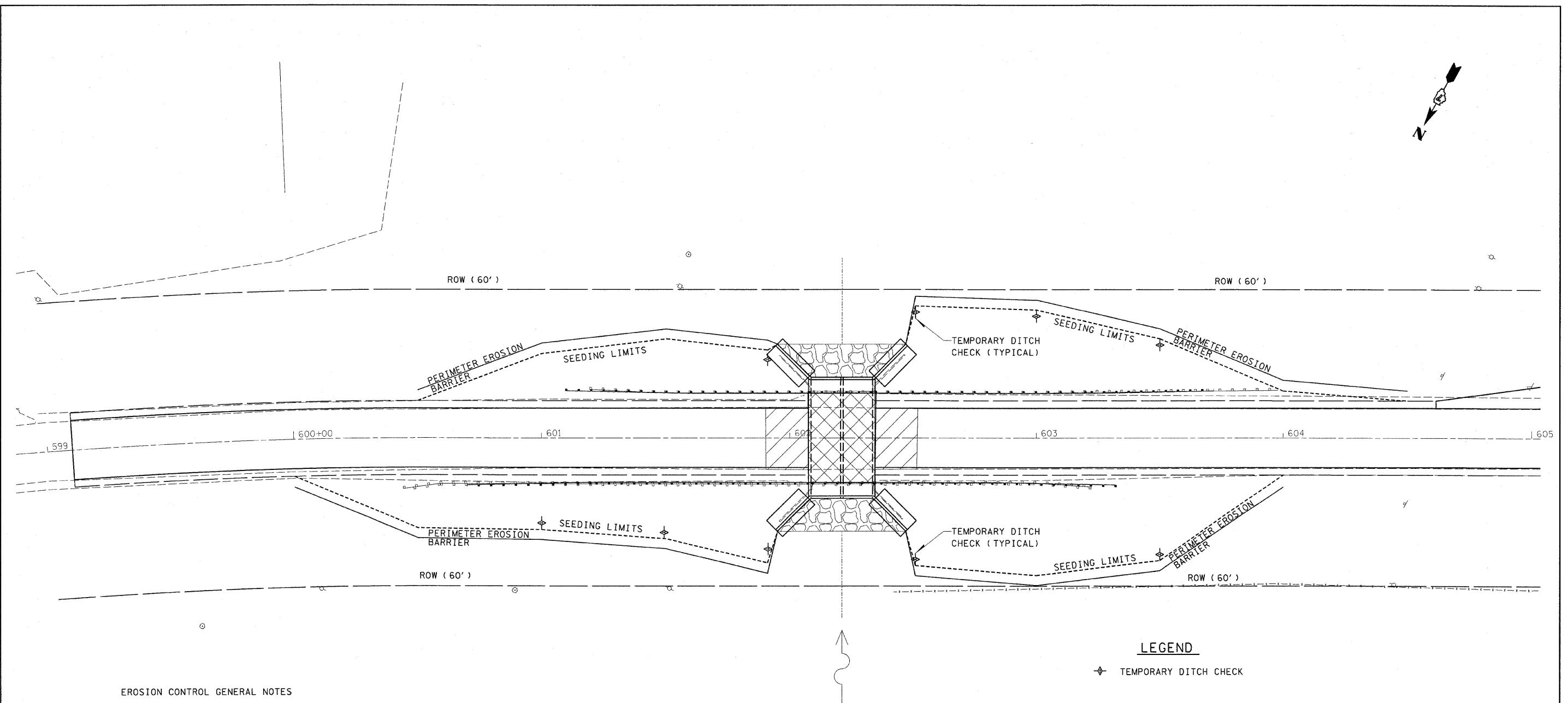
PROP. CURVE C2
 PI STA. = 595+68.16
 $\Delta = 27^\circ 08' 58''$ (RT)
 $D = 2^\circ 45' 04''$
 $R = 2,082.57'$
 $T = 502.86'$
 $L = 986.82'$
 $E = 59.85'$
 $e =$
 $T.R. =$
 $S.E. RUN =$
 P.C. STA. = 590+65.30
 P.T. STA. = 600+52.13



PROFILE	SURVEYED	DATE
	PLOTTED	
	CHECKED	
	BY	
	NO. OF WAY CHECKED	
	STRUCTURE NOTATIONS CHKD	



FILE NAME =	USER NAME = swartzr	DESIGNED - TDN	REVISED -	STATE OF ILLINOIS DEPARTMENT OF TRANSPORTATION	PLAN AND PROFILE FAU ROUTE 8324 (TRIMBLE ROAD) STA. 599+10 TO STA. 606+00		F.A.U. RTE.	SECTION	COUNTY	TOTAL SHEETS	SHEET NO.	
et:\pwork\p1001\SWARTZR\dms38655\SH01.dgn		DRAWN - SRS	REVISED -		8324	(21,8Y)B-1	CRAWFORD	19	8			
PLOT SCALE = 500.00' / IN.		CHECKED -	REVISED -		SCALE: 1"=50'		SHEET NO. 1 OF 1 SHEETS		STA. 596+00 TO STA. 611+00		CONTRACT NO. 74104	
PLOT DATE = 12/14/2009		DATE - 11-11-08	REVISED -		ILLINOIS FED. AID PROJECT							



LEGEND

◆ TEMPORARY DITCH CHECK

EROSION CONTROL GENERAL NOTES

EROSION CONTROL MEASURES AT THE START OF CONSTRUCTION:

1. THE AREAS OF EXCAVATION AND EMBANKMENT PLACEMENT SHALL BE MANAGED FOR THE PURPOSES OF CONTROLLING EROSION WITHIN THE IMPROVEMENT AREA, REDUCING WATER FLOW BY TEMPORARY DIVERSION, MINIMIZING SILTATION AT THE RIGHT-OF-WAY LINE, AND ESTABLISHING VEGETATIVE COVER WHICH WILL BECOME PERMANENT VEGETATION AND ACT AS AN EROSION CONTROL BARRIER. WORK AT THE START OF CONSTRUCTION SHALL CONSIST OF THE FOLLOWING:
 - (a) AREAS OF EXISTING VEGETATION (WOODS AND GRASSLANDS) OUTSIDE THE PROPOSED CONSTRUCTION LIMITS SHALL BE IDENTIFIED FOR PRESERVING AND SHALL BE PROTECTED FROM MOWING, BRUSH CUTTING, TREE REMOVAL, AND OTHER ACTIVITIES THAT WOULD BE DETRIMENTAL TO THEIR MAINTENANCE AND DEVELOPMENT.
 - (b) DEAD, DISEASED, OR UNSUITABLE VEGETATION WITHIN THE SITE SHALL BE REMOVED AS DIRECTED BY THE ENGINEER.
 - (c) BARE AND SPARSELY VEGETATED GROUND IN HIGHLY ERODABLE AREAS AS DETERMINED BY THE ENGINEER SHALL BE TEMPORARY SEEDED AT THE START OF CONSTRUCTION WHEN NO CONSTRUCTION ACTIVITIES ARE EXPECTED WITHIN SEVEN CALENDAR DAYS.

EROSION CONTROL MEASURES DURING CONSTRUCTION:

1. DURING CONSTRUCTION, AREAS OUTSIDE THE CONSTRUCTION LIMITS AS OUTLINED PREVIOUSLY HEREIN SHALL BE PROTECTED FROM DAMAGING EFFECTS OF CONSTRUCTION. THE CONTRACTOR SHALL NOT USE THIS AREA FOR PARKING OF VEHICLES OR CONSTRUCTION EQUIPMENT, STORAGE OF MATERIALS, OR OTHER CONSTRUCTION RELATED ACTIVITIES.
 - (a) WITHIN THE CONSTRUCTION ZONE, CRITICAL AREAS WHICH HAVE A HIGH FLOW OF WATER, AS DETERMINED BY THE ENGINEER, SHALL REMAIN UNDISTURBED UNTIL CONTINUOUS OPERATIONS CAN ENSURE TIMELY COMPLETION OF WORK IN THESE AREAS TO MINIMIZE SOIL EROSION.
 - (b) EARTH STOCKPILES SHALL BE TEMPORARY SEEDED IF THEY ARE TO REMAIN UNUSED FOR MORE THAN FOURTEEN CALENDAR DAYS.

EROSION CONTROL MEASURES AFTER FINAL GRADING:

1. EXCAVATION AND EMBANKMENT AREAS SHALL BE PERMANENTLY SEEDED WHEN FINAL GRADE.
 - (a) TEMPORARY EROSION CONTROL SYSTEMS SHALL REMAIN IN PLACE WITH PROPER MAINTENANCE UNTIL PERMANENT EROSION CONTROL IS IN PLACE AND WORKING PROPERLY WITH ALL PROPOSED TURF AREAS SEEDED AND A PROPER STAND ESTABLISHED.

FILE NAME =	USER NAME = swartzw	DESIGNED -	REVISED -	STATE OF ILLINOIS DEPARTMENT OF TRANSPORTATION	EROSION CONTROL		F.A.U. RTE.	SECTION	COUNTY	TOTAL SHEETS	SHEET NO.
c:\pwork\pwork\SWARTZRW\d0121446\07	1104-ghr-erosion.dgn	DRAWN -	REVISED -		8324	(21, BY)B-1	CRAWFORD	19	9		
	PLOT SCALE = 20.0000' / IN.	CHECKED -	REVISED -		CONTRACT NO. 74104			ILLINOIS FED. AID PROJECT			
	PLOT DATE = 12/14/2009	DATE -	REVISED -		SCALE: 20	SHEET NO. 1 OF 1 SHEETS	STA. 599+00 TO STA. 605+00				

Bench Marks: Chiseled square at S.W. wingwall of existing structure. Elevation 497.52
RR Spike in Telephone Pole at Sta. 589+81, 58.1' Rf. Elevation 509.69

Existing Structure: S.N. 017-0020 built in 1924 as F.A.S. 1696, Section (21, BY) B-1 at Station 602+21.00. Existing deck and abutments were widened in 1955 to include 9" high by 20" wide curbs with Texas Rail. Structure consists of single-span reinforced concrete slab supported by closed RC abutments. The widened portions of the abutments are founded on untreated timber piles. It is unknown if piles exist under the original portions of the abutments. The structure has an overall length of 28'-0" back-to-back of abutments and a width of 40'-4" out-to-out of deck.

Road to be Closed During Construction.

No salvage.

STATE OF ILLINOIS
DEPARTMENT OF TRANSPORTATION

STATION 602+21.00
BUILT 2009 BY
STATE OF ILLINOIS
F.A.U. 8324 - SEC. (21, BY) B-1
LOADING HS20-44
STRUCTURE NO. 017-2014

NAME PLATE

See Plan View & Std. 515001

TOTAL BILL OF MATERIAL

ITEM	UNIT	TOTAL
Porous Granular Embankment	Cu. Yd.	962
Rockfill-Replacement	Ton	890
Stone Riprap, Class A4	Sq. Yd.	115
Filter Fabric	Sq. Yd.	115
Removal of Existing Structures	Each	1
Structure Excavation	Cu. Yd.	573
Reinforcement Bars	Pound	38770
Reinforcement Bars, Epoxy Coated	Pound	1720
Name Plates	Each	1
Concrete Box Culverts	Cu. Yd.	246.1
Removal and Disposal of Unsuitable Material	Cu. Yd.	434
Geotechnical Fabric for Ground Stabilization	Sq. Yd.	564

INDEX OF SHEETS

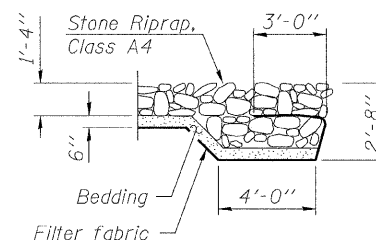
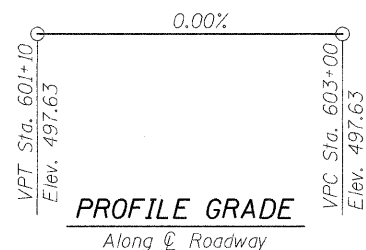
SHEET NO.	DESCRIPTION
1	General Plan
2	General Notes & Structure Details
3	Structure Details
4	Soil Boring No. 1
5	Soil Boring No. 2

WATERWAY INFORMATION

Drainage Area = 2.59 Sq. Mi. Existing Low Grade Elev. 496.94 @ Sta. 603+00
Proposed Low Grade Elev. 497.63 @ Sta. 603+00

Flood	Freq. Yr.	Q C.F.S.	Opening Sq. Ft.		Nat. H.W.E.	Head-Ft.		Headwater El.	
			Exist.	Prop.		Exist.	Prop.	Exist.	Prop.
Design	10	672	185	196	491.5	0.0	0.0	491.5	491.5
Base	50	1039	224	232	493.0	0.4	0.2	493.4	493.2
Overtopping	100	1194	240	246	493.6	0.4	0.3	494.0	493.9
Max. Calc.	500	1563	276	280	495.0	0.6	0.5	495.6	495.5

GENERAL PLAN
FAU-8324 (TRIMBLE ROAD) OVER
UNNAMED STREAM
SECTION (21, BY) B-1
CRAWFORD COUNTY
STATION 602+21
STRUCTURE NO. 017-2014



SECTION A-A

LOADING HS20-44

Allow 50#/sq. ft. for future wearing surface.

DESIGN SPECIFICATIONS

2002 AASHTO

DESIGN STRESSES

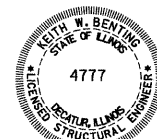
FIELD UNITS

New Construction

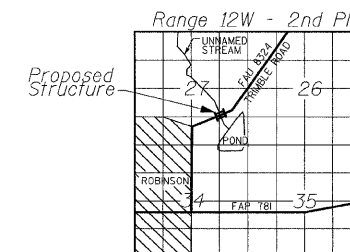
$f'_c = 3,500$ psi
 $f_y = 60,000$ psi (reinforcement)

APPROVED
FOR STRUCTURAL ADEQUACY ONLY

Ralph E. Anderson (TS)
ENGINEER OF BRIDGES AND STRUCTURES



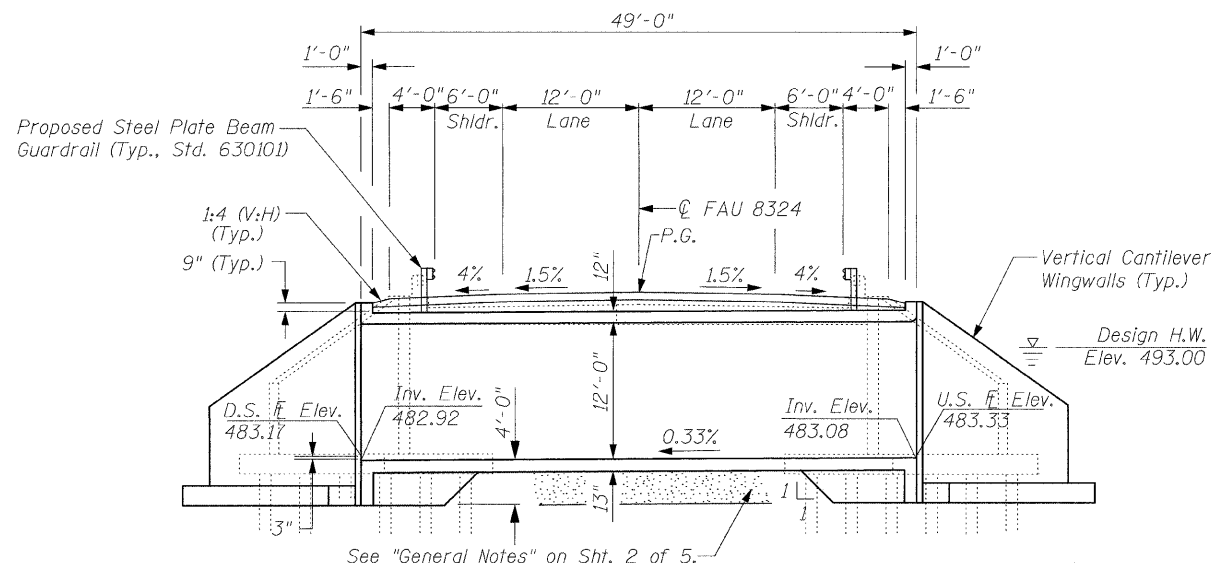
Keith W. Benting 1/27/2010
EXPIRATION DATE: 11-30-2010



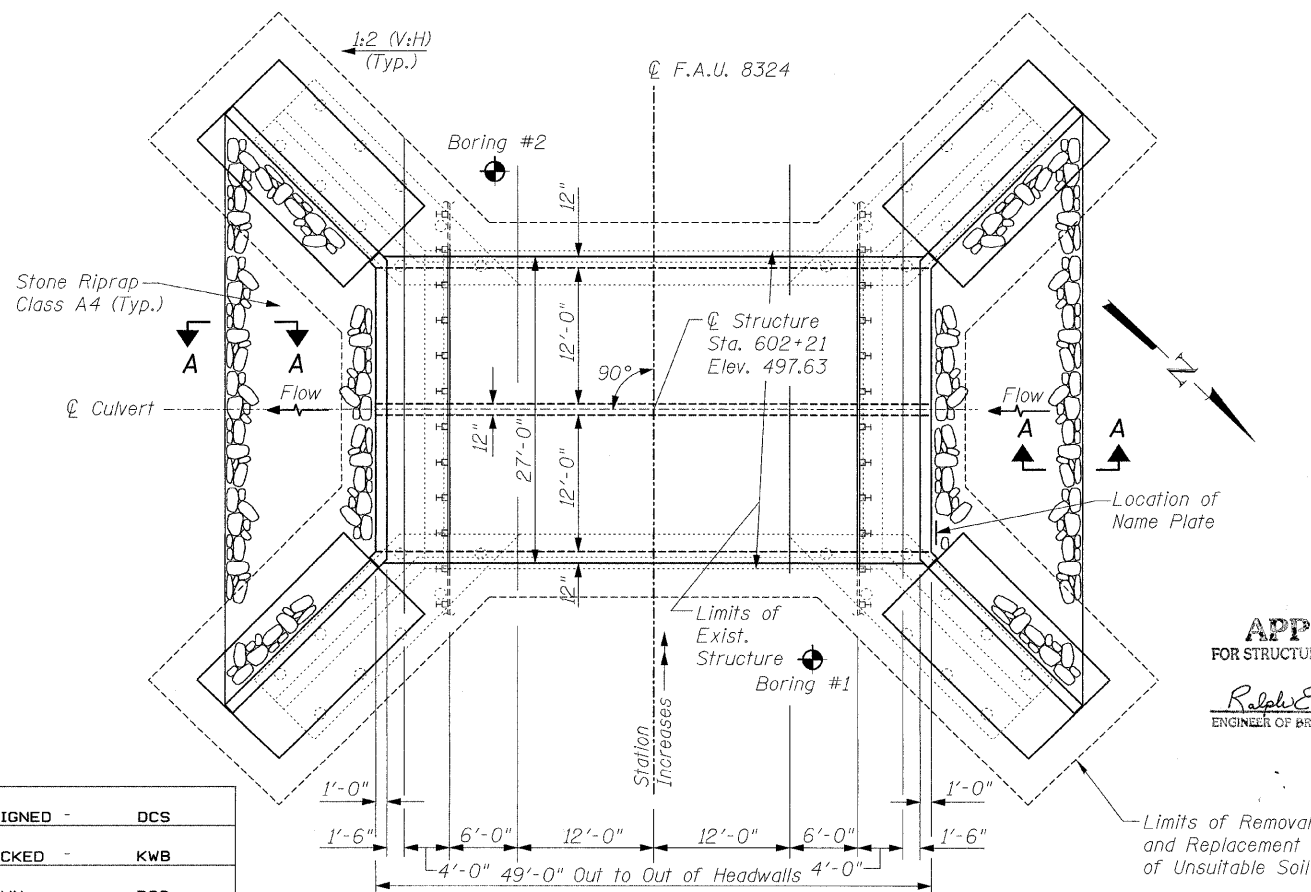
LOCATION SKETCH



SHEET NO. 1	F.A.U. RTE.	SECTION	COUNTY	TOTAL SHEETS	SHEET NO.
5 SHEETS	8324	(21, BY) B-1	CRAWFORD	-	10
CONTRACT NO. 74104					
FED. ROAD DIST. NO. - ILLINOIS FED. AID PROJECT					



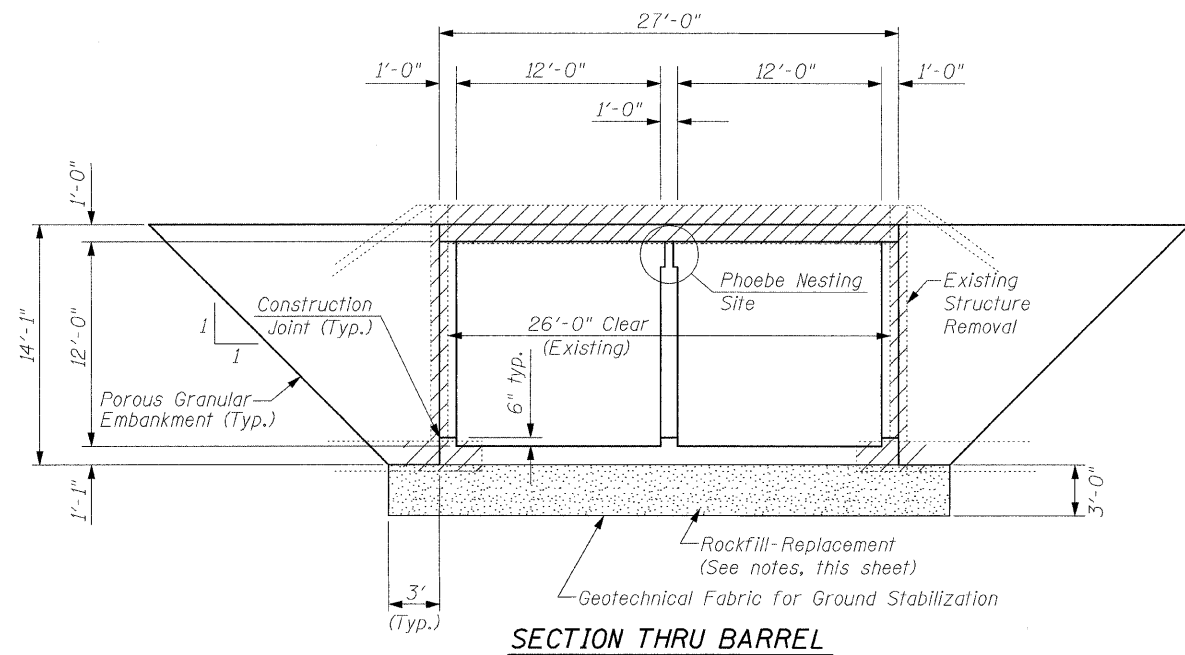
LONGITUDINAL SECTION



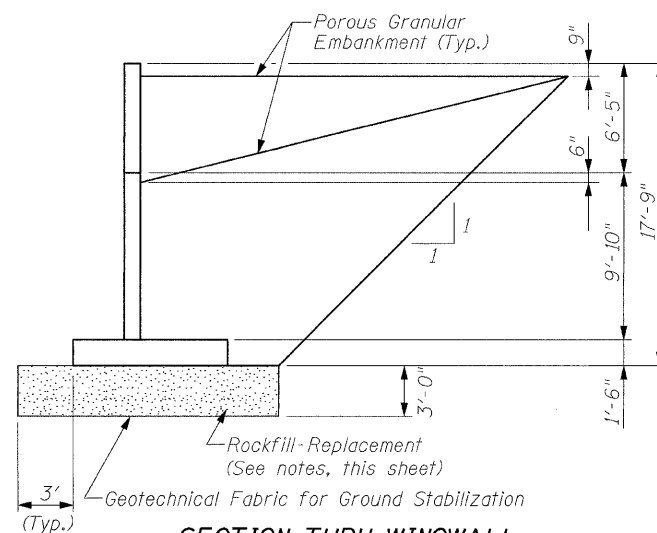
PLAN

DESIGNED -	DCS
CHECKED -	KWB
DRAWN -	DCS
CHECKED -	KWB

STATE OF ILLINOIS
DEPARTMENT OF TRANSPORTATION



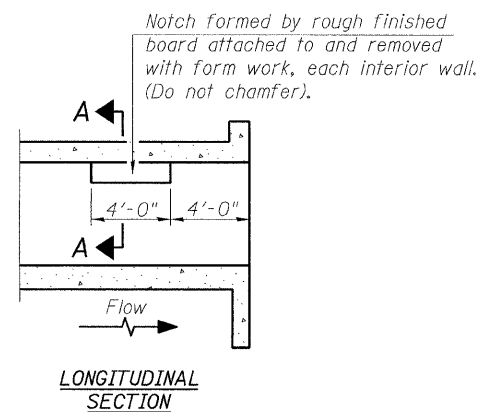
SECTION THRU BARREL



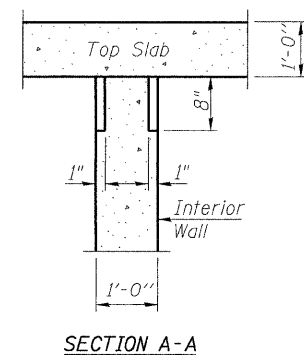
SECTION THRU WINGWALL

GENERAL NOTES

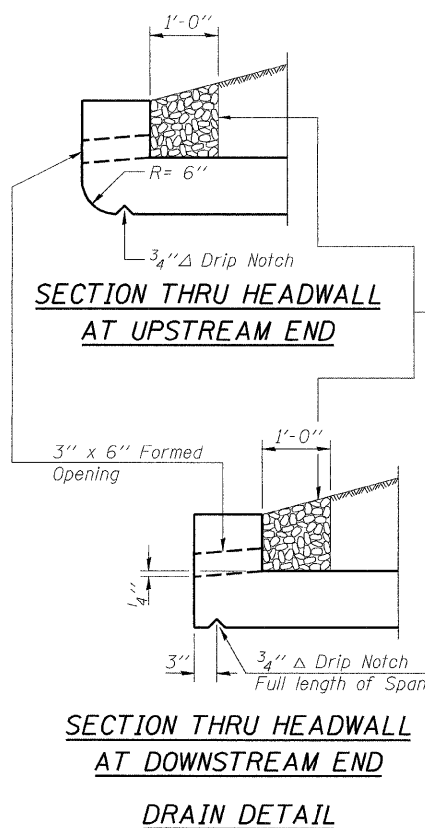
- A precast concrete culvert alternate will not be allowed.
- Reinforcement bars shall conform to the requirements of ASTM A 706 Gr 60. See Special Provisions.
- Layout of slope protection system may be varied in the field to suit ground conditions as directed by the Engineer.
- Excavation behind existing abutment walls shall be performed to balance front and back soil pressure before removing the existing superstructure.
- Remove approximately three feet of unsuitable soil beneath the footprint of the box culvert and extend three feet beyond the perimeter of the culvert. Replace with Rockfill-Replacement. The limits and quantities of removal and replacement shown are based on the boring data and may be modified by the District Geotechnical and Field Engineers for variable subsurface conditions encountered in the field.
- Exposed edges shall be beveled $\frac{3}{4}$ " unless otherwise noted.
- The guardrail shall be mounted to the box culvert per Highway Standard 630101, Case IV Mounted on Slab. The guardrail post shall be welded all around to the base plate using $\frac{3}{16}$ " fillet welds.
- For backfilling and embankment see Standard Specifications.



LONGITUDINAL SECTION



**SECTION A-A
PHOEBE NESTING
SITE DETAILS**
(Downstream End Only)



DRAIN DETAIL

GENERAL NOTES AND STRUCTURE DETAILS
FAU-8324 (TRIMBLE ROAD) OVER
UNNAMED STREAM
SECTION (21, BY) B-1
CRAWFORD COUNTY
STATION 602+21
STRUCTURE NO. 017-2014

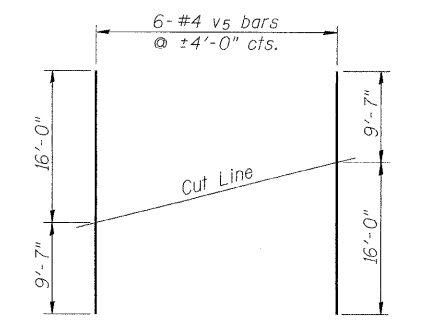
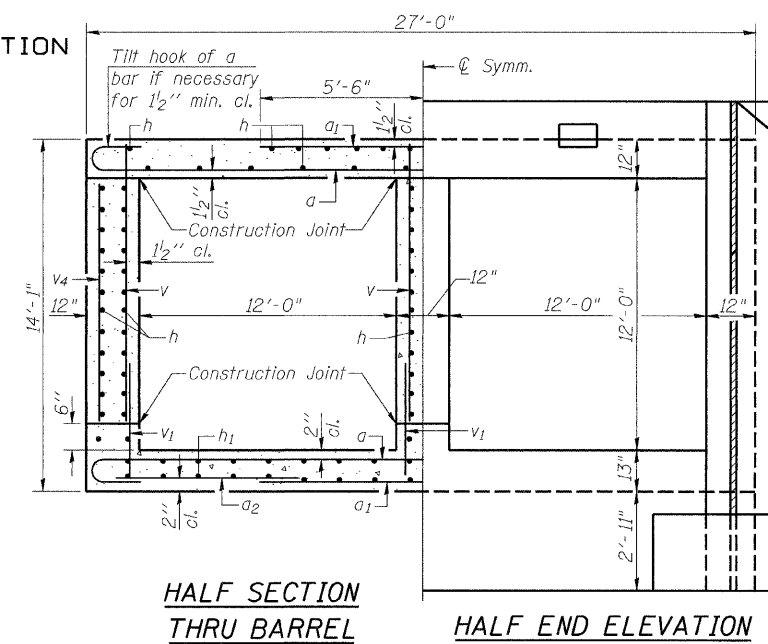
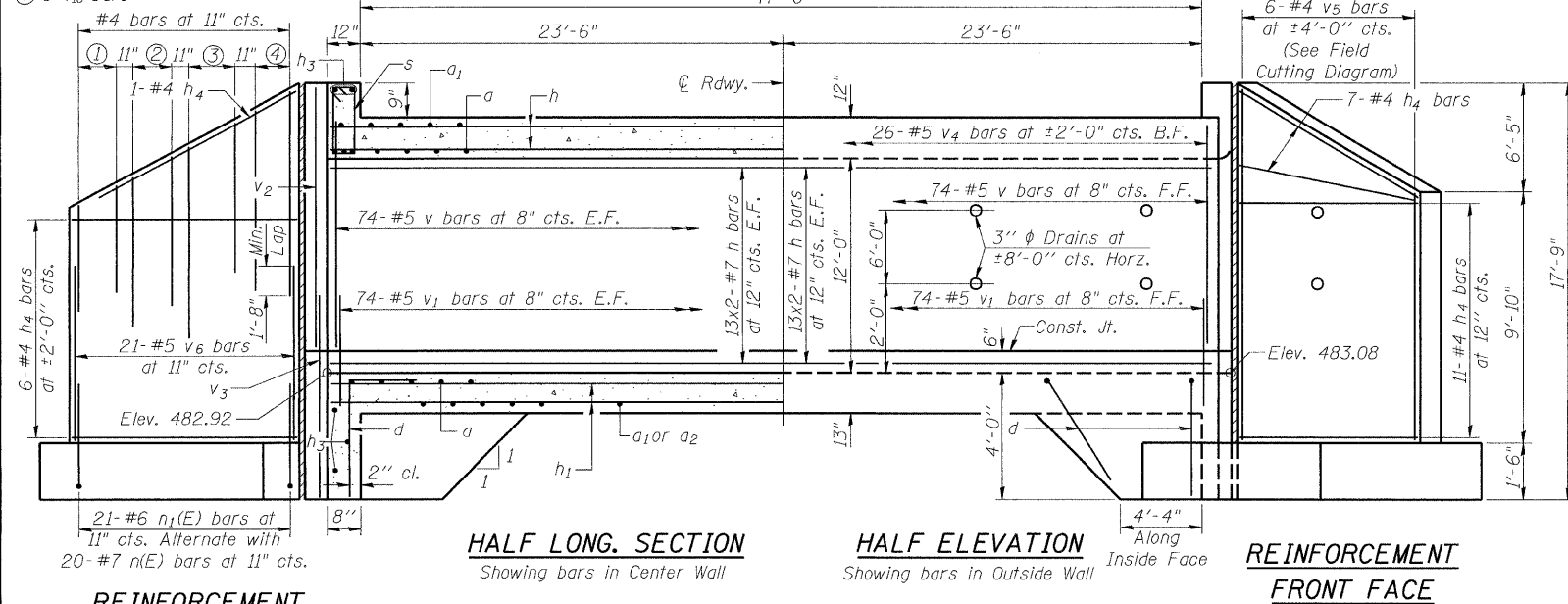
DESIGNED -	DCS
CHECKED -	KWB
DRAWN -	REZ
CHECKED -	KWB



SHEET NO. 2 5 SHEETS	F.A.U. RTE. 8324	SECTION (21, BY) B-1	COUNTY CRAWFORD	TOTAL SHEETS -	SHEET NO. 11
	CONTRACT NO. 74104			ILLINOIS FED. AID PROJECT	

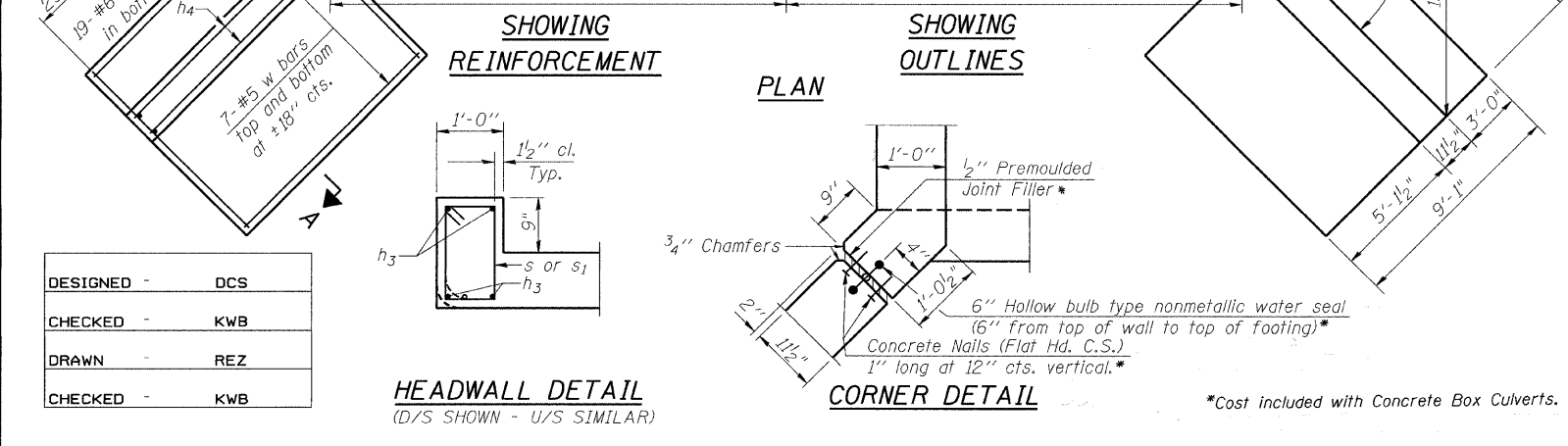
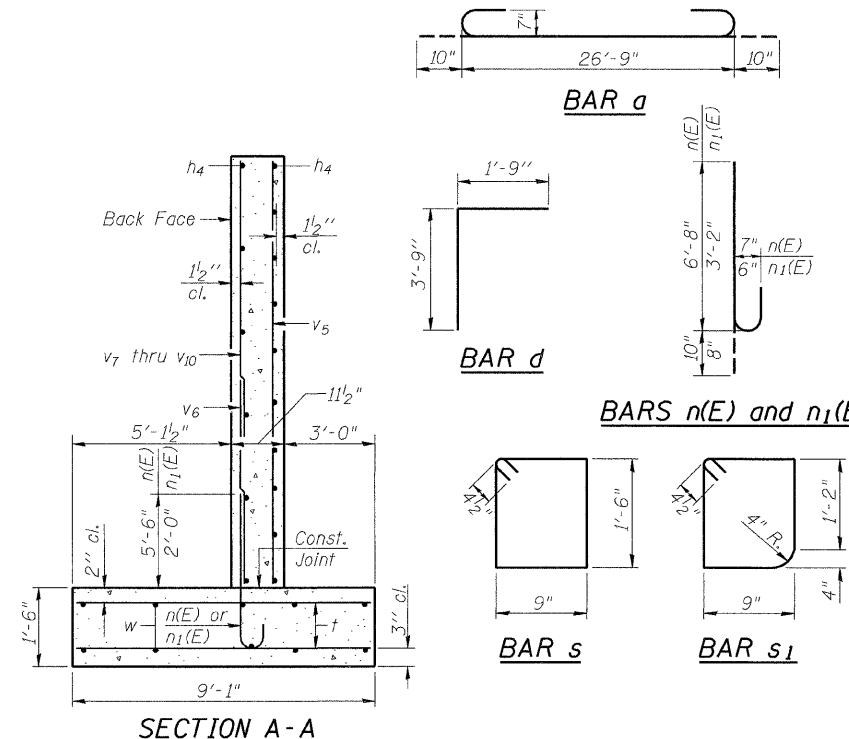
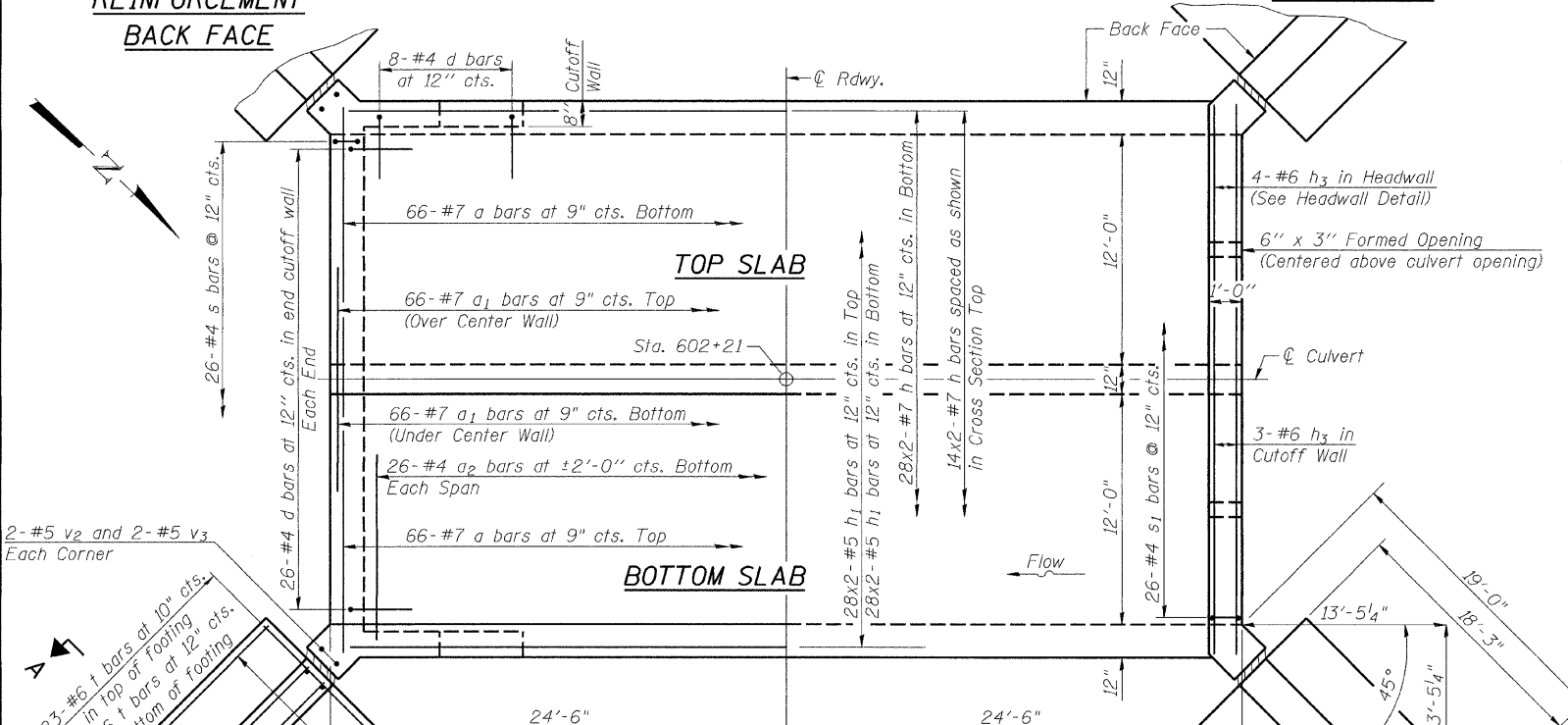
STATE OF ILLINOIS
DEPARTMENT OF TRANSPORTATION

- ① 3-v₇ bars
- ② 6-v₈ bars
- ③ 6-v₉ bars
- ④ 6-v₁₀ bars



BILL OF MATERIAL

Bar	No.	Size	Length	Shape
a	132	#7	28'-5"	[Shape]
a ₁	132	#7	11'-0"	[Shape]
a ₂	52	#4	10'-8"	[Shape]
d	84	#4	5'-6"	[Shape]
h	240	#7	25'-9"	[Shape]
h ₁	112	#5	25'-3"	[Shape]
h ₃	14	#6	26'-9"	[Shape]
h ₄	100	#4	18'-0"	[Shape]
n(E)	80	#7	7'-6"	[Shape]
n ₁ (E)	84	#6	3'-10"	[Shape]
s	26	#4	5'-3"	[Shape]
s ₁	26	#4	5'-1"	[Shape]
t	168	#6	8'-10"	[Shape]
v	296	#5	12'-3"	[Shape]
v ₁	296	#5	2'-7"	[Shape]
v ₂	8	#5	13'-1"	[Shape]
v ₃	8	#5	6'-8"	[Shape]
v ₄	52	#5	11'-4"	[Shape]
v ₅	12	#4	25'-7"	[Shape]
v ₆	84	#5	7'-0"	[Shape]
v ₇	12	#4	5'-0"	[Shape]
v ₈	24	#4	6'-11"	[Shape]
v ₉	24	#4	8'-10"	[Shape]
v ₁₀	24	#4	10'-9"	[Shape]
w	56	#5	18'-0"	[Shape]



DESIGNED	-	DCS
CHECKED	-	KWB
DRAWN	-	REZ
CHECKED	-	KWB

MINIMUM BAR LAP
(Barrels)
#5 bar = 1'-8"
#6 bar = 2'-0"
#7 bar = 2'-9"
(Wingwalls)
#4 bar = 1'-8"
#5 bar = 2'-2"

Notes:
Reinforcement bars designated (E) shall be epoxy coated.
Bars indicated thus 12x4-#5 etc. indicates 12 lines of bars with 4 lengths per line.

STRUCTURE DETAILS
FAU-8324 (TRIMBLE ROAD) OVER UNNAMED STREAM
SECTION (21, BY) B-1
CRAWFORD COUNTY
STATION 602+21
STRUCTURE NO. 017-2014

SHEET NO. 3 5 SHEETS	F.A.U. RTE. 8324	SECTION (21, BY) B-1	COUNTY CRAWFORD	TOTAL SHEETS -	SHEET NO. 12
	CONTRACT NO. 74104			ILLINOIS FED. AID PROJECT	



*Cost included with Concrete Box Culverts.

STATE OF ILLINOIS
DEPARTMENT OF TRANSPORTATION



SOIL BORING LOG

Page 1 of 2

Date 10/5/05

ROUTE FAU 8324 DESCRIPTION Trimble Road over Un-named Stream LOGGED BY E. Sandschafer
SECTION (21.BY)B-1 LOCATION SE 1/4, SEC. 27, TWP. 7 N, RNG. 12 W, 3 PM
COUNTY Crawford DRILLING METHOD Hollow stem auger & split spoon HAMMER TYPE Auto 140#

STRUCT. NO. Station	BORING NO. Station Offset Ground Surface Elev.	D E P T H (ft)	B L O W S (/6")	U C S Qu (tsf)	M O I S T (%)	Surface Water Elev.		Stream Bed Elev.		D E P T H (ft)	B L O W S (/6")	U C S Qu (tsf)	M O I S T (%)
						483.71 ft	483.29 ft	483.71 ft	483.29 ft				
017-0020 602+21	2 602+30 14.00ft Lt 496.90 ft												
Aggregate shoulder. Brown, SANDY CLAY.											1	0.9	34
494.90											1	B	
Medium, damp, brown, SILTY CLAY.											0		
											1	0.6	28
											2	B	
											2	B	
											1		
											0		
											1	0.6	26
											1	B	
											1		
											2	0.6	14
											2	B	
											0		
											2	0.2	19
											1	B	
											0		
											0	0.3	21
											1	B	
											0		
											2	0.8	27
											2		
											0		
											0		

The Unconfined Compressive Strength (UCS) Failure Mode is indicated by (B-Bulge, S-Shear, P-Penetrometer)
The SPT (N value) is the sum of the last two blow values in each sampling zone (AASHTO T206)
BBS, from 137 (Rev. 8-99)



SOIL BORING LOG

Page 2 of 2

Date 10/5/05

ROUTE FAU 8324 DESCRIPTION Trimble Road over Un-named Stream LOGGED BY E. Sandschafer
SECTION (21.BY)B-1 LOCATION SE 1/4, SEC. 27, TWP. 7 N, RNG. 12 W, 3 PM
COUNTY Crawford DRILLING METHOD Hollow stem auger & split spoon HAMMER TYPE Auto 140#

STRUCT. NO. Station	BORING NO. Station Offset Ground Surface Elev.	D E P T H (ft)	B L O W S (/6")	U C S Qu (tsf)	M O I S T (%)	Surface Water Elev.		Stream Bed Elev.		D E P T H (ft)	B L O W S (/6")	U C S Qu (tsf)	M O I S T (%)
						483.71 ft	483.29 ft	483.71 ft	483.29 ft				
017-0020 602+21	2 602+30 14.00ft Lt 496.90 ft												
Medium to stiff, damp, red marbled gray, SANDY LOAM w/ fine Gravel. (continued)											5	1.0	22
											6	PP	
											0		
											2		20
											9		
											0		
											2	0.5	24
											3	B	
											1		
											1	0.5	21
											2	B	
											2		
											2		
											0		
											2	0.2	19
											1	B	
											0		
											0	0.3	21
											1	B	
											0		
											2	0.8	27
											2		
											0		
											0		

The Unconfined Compressive Strength (UCS) Failure Mode is indicated by (B-Bulge, S-Shear, P-Penetrometer)
The SPT (N value) is the sum of the last two blow values in each sampling zone (AASHTO T206)
BBS, from 137 (Rev. 8-99)

SOIL BORINGS
FAU-8324 (TRIMBLE ROAD) OVER
UNNAMED STREAM
SECTION (21, BY) B-1
CRAWFORD COUNTY
STATION 602+21
STRUCTURE NO. 017-2014

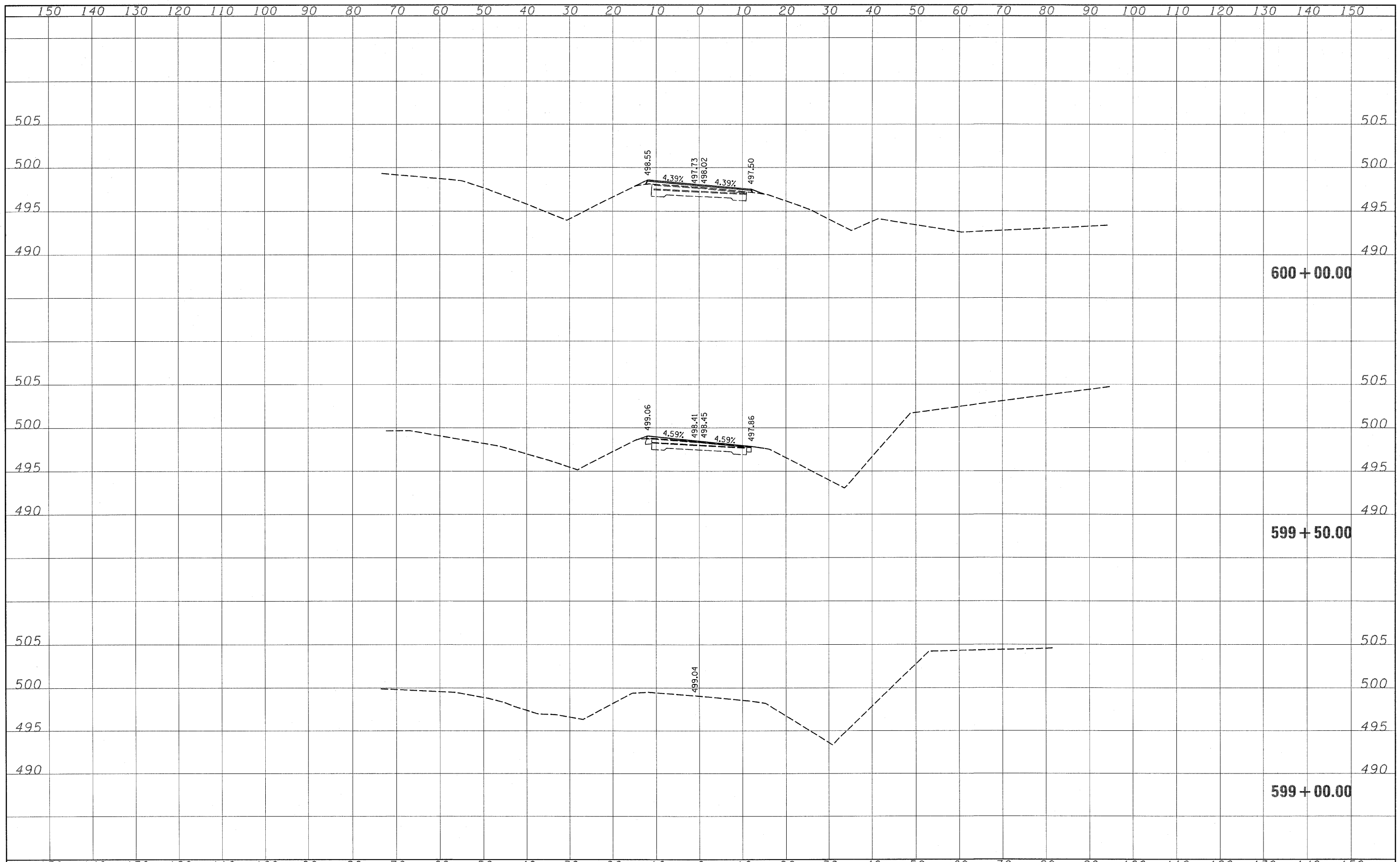
DESIGNED	-	DCS
CHECKED	-	KWB
DRAWN	-	REZ
CHECKED	-	KWB



SHEET NO. 5 5 SHEETS	F.A.U. RTE.	SECTION	COUNTY	TOTAL SHEETS	SHEET NO.
	8324	(21, BY) B-1	CRAWFORD	-	14
CONTRACT NO. 74104					
FED. ROAD DIST. NO. _ ILLINOIS FED. AID PROJECT					

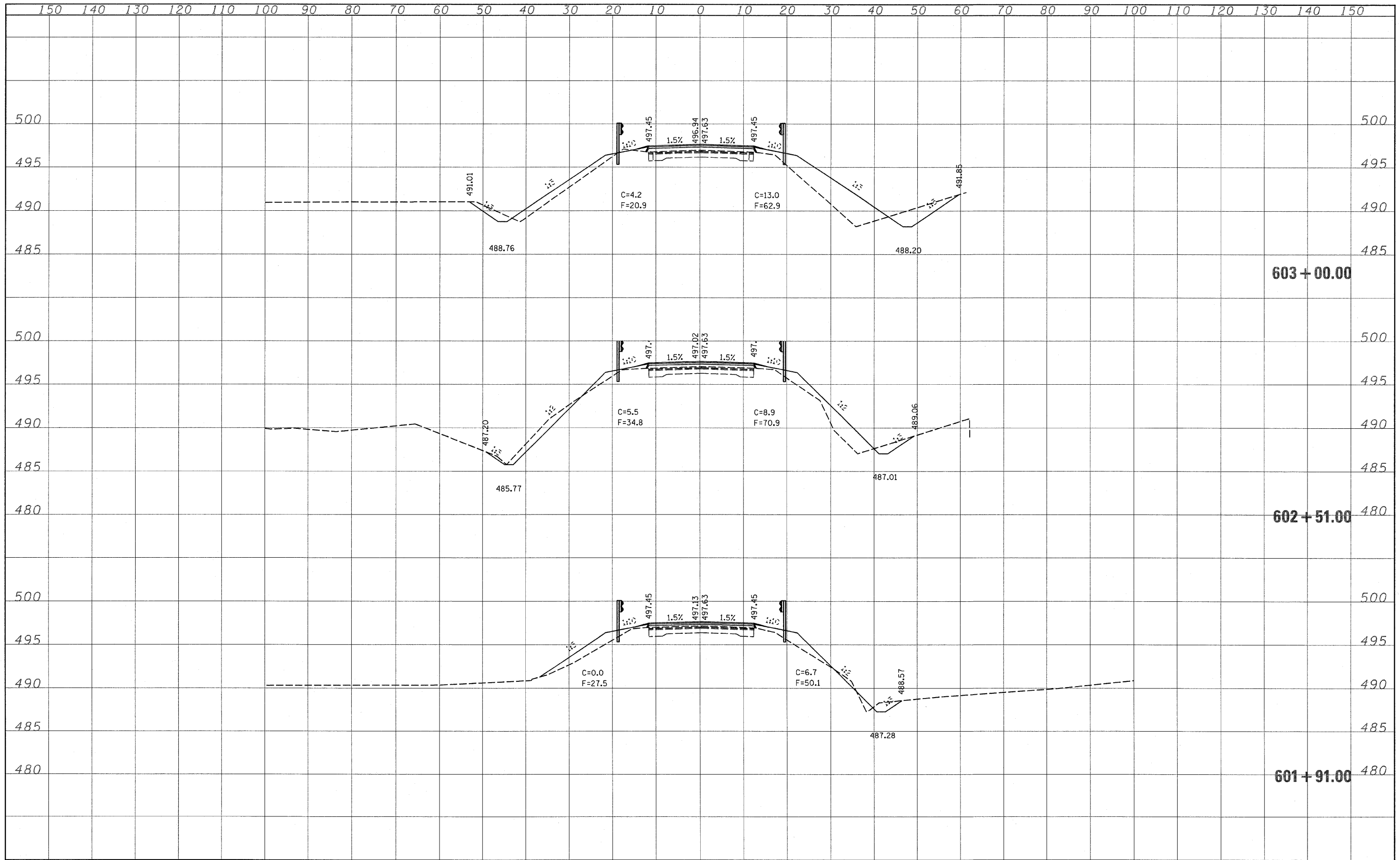
FINN	DATE
SURVEYED	
PLOTTED	
NOTE BOOK	
AREAS CHECKED	
NO.	

ORIGINAL	DATE
SURVEY	
PLOTTED	
NOTE BOOK	
AREAS CHECKED	
NO.	



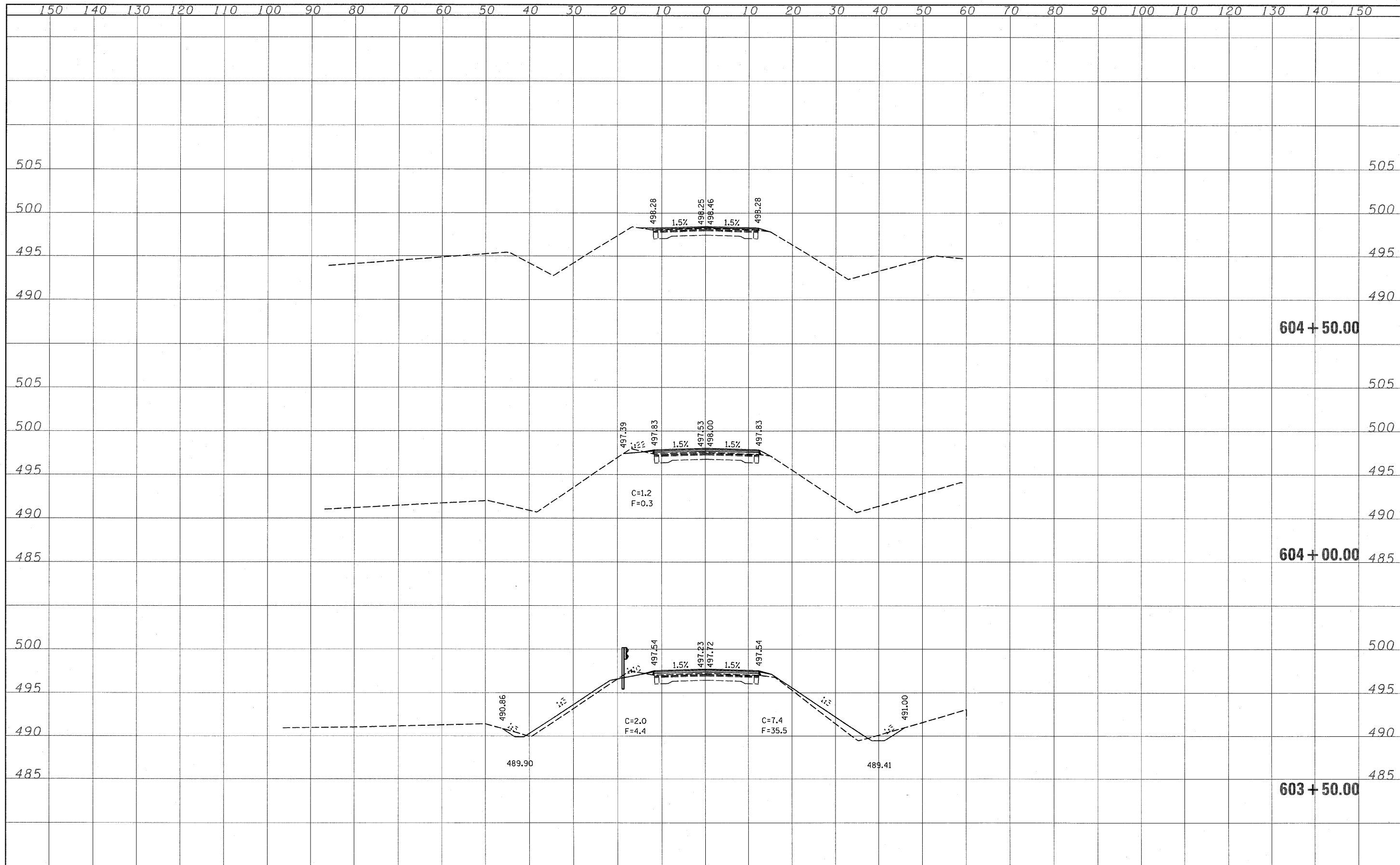
DATE	BY	SURVEYED	PLOTTED	TEMPLATE	AREAS CHECKED
FINAL SURVEY NO.					

DATE	BY	SURVEYED	PLOTTED	TEMPLATE	AREAS CHECKED
ORIGINAL SURVEY NO.					



DATE	
BY	
FINAL SURVEY	
SURVEYED	
PLOTTED	
TEMPLATE	
NOTE BOOK	
NO.	
AREAS CHECKED	

DATE	
BY	
ORIGINAL SURVEY	
SURVEYED	
PLOTTED	
TEMPLATE	
NOTE BOOK	
NO.	
AREAS CHECKED	



FILE NAME =	USER NAME = swartzrw	DESIGNED -	REVISED -	STATE OF ILLINOIS DEPARTMENT OF TRANSPORTATION	TRIMBLE ROAD CROSS SECTIONS			F.A.U. RTE.	SECTION	COUNTY	TOTAL SHEETS	SHEET NO.
ct:\pw\work\PW1001\SWARTZRW\dms38655\0774104-sh	ht:xsht.dgn	DRAWN -	REVISED -		8324	(21, BY)B-1	CUMBERLAND	19	18			
PLOT SCALE = 10.0000' / IN.	CHECKED -	REVISED -	SCALE: AS SHOWN		SHEET NO. 4	OF 5 SHEETS	STA. 603+50.00 TO STA. 604+50.00	CONTRACT NO. 74104				
PLOT DATE = 12/14/2009	DATE -	REVISED -	ILLINOIS FED. AID PROJECT									

FINAL SURVEY	SURVEYED	BY	DATE
NOTE BOOK NO.	PLOTTED		
	TEMPLATE		
	AREAS CHECKED		

ORIGINAL SURVEY	SURVEYED	BY	DATE
NOTE BOOK NO.	PLOTTED		
	TEMPLATE		
	AREAS CHECKED		

