

STATE OF ILLINOIS  
 DEPARTMENT OF TRANSPORTATION  
 DIVISION OF HIGHWAYS  
**PROPOSED  
 HIGHWAY PLANS**

FOR INDEX OF SHEETS, SEE SHEET NO. 2

FAP ROUTE 832 (IL. RTE. 49)  
 SECTION 4RS-1, 114RS-2

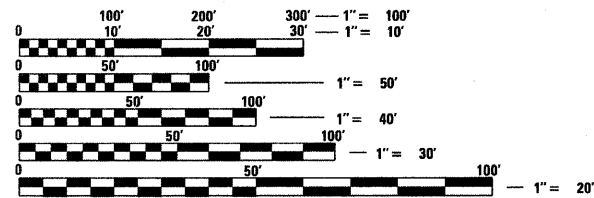
RESURFACING (SMART)  
 COLES COUNTY  
 C-97-133-09

F.A.P. RTE.	SECTION	COUNTY	TOTAL SHEETS	SHEET NO.
832	4 RS-1, 114 RS-2	COLES	22	1
		ILLINOIS	CONTRACT NO. 74418	

D-97-076-09



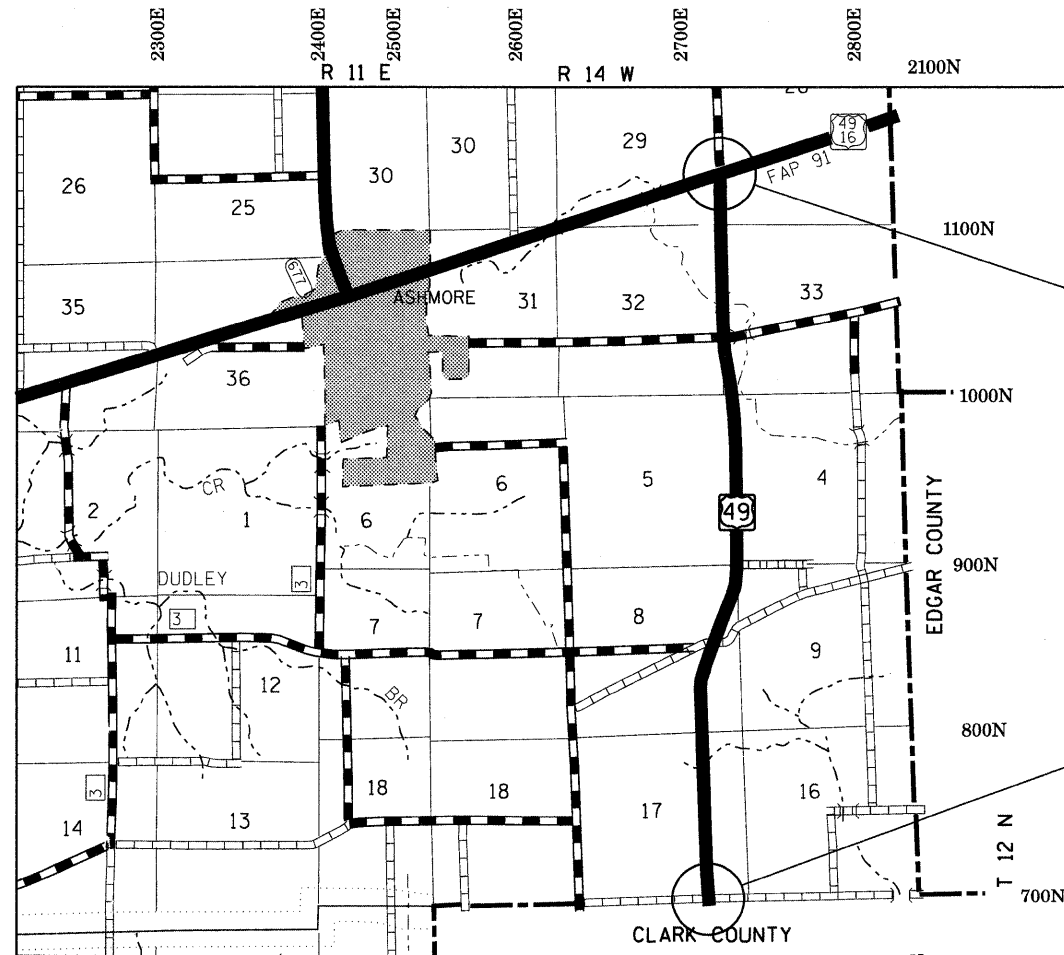
ADT = 950



FULL SIZE PLANS HAVE BEEN PREPARED USING STANDARD ENGINEERING SCALES. REDUCED SIZED PLANS WILL NOT CONFORM TO STANDARD SCALES. IN MAKING MEASUREMENTS ON REDUCED PLANS, THE ABOVE SCALES MAY BE USED.

J.U.L.I.E.  
 JOINT UTILITY LOCATION INFORMATION FOR EXCAVATION  
 1-800-892-0123  
 OR 811

PROJECT ENGINEER: TOM RONAN  
 PROJECT MANAGER: KEVIN BRADY  
 ASHMORE TOWNSHIP  
 CONTRACT NO. 74418



FAP ROUTE 832 (IL. RTE. 49)  
 SECTION: 4RS-1, 114RS-2  
 COLES COUNTY  
 PROJECTS ENDS:  
 STA 887 + 87

FAP ROUTE 832 (IL. RTE. 49)  
 SECTION: 4RS-1, 114RS-2  
 COLES COUNTY  
 PROJECTS BEGINS:  
 STA 655 + 75

GROSS LENGTH = 23,212 FT. = 4.40 MILES  
 NET LENGTH = 23,212 FT. = 4.40 MILES

STATE OF ILLINOIS  
 DEPARTMENT OF TRANSPORTATION  
 DIVISION OF HIGHWAYS

SUBMITTED November 24 2009

*Regis L. Spickell*  
 DEPUTY DIRECTOR OF HIGHWAYS, REGION ENGINEER

January 09 2010  
*Scott B. Stitt P.E./e*  
 ENGINEER OF DESIGN AND ENVIRONMENT

January 29 2010  
*Christine M. Read/e*  
 DIRECTOR OF HIGHWAYS, CHIEF ENGINEER

**PRINTED BY THE AUTHORITY  
 OF THE STATE OF ILLINOIS**

**INDEX OF SHEETS**

SHEET NO.	ITEM
1	COVER SHEET
2	INDEX OF SHEETS & GENERAL NOTES
3	SUMMARY OF QUANTITIES
4-7	TYPICAL SECTIONS
8-9	SCHEDULE OF QUANTITIES
10	SURVEY MARKERS & MONUMENT TIES
11-18	PLAN SHEETS
19	ENTRANCE SCHEDULE AND DETAILS
20	MILLING DETAILS
21	TYPICAL RUMBLE STRIP APPLICATION
22	SURVEY MARKER VAULT

THE FOLLOWING STANDARDS ARE A PART OF THESE PLANS AND ARE INCLUDED AFTER SHEET NO. 22 :

STD. NO.	DESCRIPTION
000001-05	STANDARD SYMBOLS, ABBREVIATIONS AND PATTERNS
406201-01	MAILBOX TURNOUT
442201-03	CLASS C AND D PATCHES
701006-03	OFF-RD OPERATIONS, 2L, 2W, 15' TO 24" FROM PAVEMENT EDGE
701011-02	OFF-RD MOVING OPERATIONS, 2L, 2W, DAY ONLY
701301-03	LANE CLOSURE, 2L, 2W, SHORT TIME OPERATIONS
701306-02	LANE CLOSURE, 2L, 2W, SLOW MOVING OPERATIONS DAY ONLY, FOR SPEEDS = 45 MPH
701311-03	LANE CLOSURE 2L, 2W, MOVING OPERATIONS - DAY ONLY
701336-05	LANE CLOSURE, 2L, 2W, WORK AREA IN SERIES FOR SPEEDS = 45 MPH
701901-01	TRAFFIC CONTROL DEVICES
780001-02	TYPICAL PAVEMENT MARKINGS
781001-03	TYPICAL APPLICATIONS RAISED REFLECTIVE PAVEMENT MARKERS

**GENERAL NOTES**

THIS SECTION SHALL BE CONSTRUCTED IN ACCORDANCE WITH THE PLANS; THE "STANDARD SPECIFICATIONS FOR ROAD AND BRIDGE CONSTRUCTION", ADOPTED JANUARY 1, 2007; THE "SUPPLEMENTAL SPECIFICATIONS AND RECURRING SPECIAL PROVISIONS", ADOPTED JANUARY 1, 2010, AND THE SPECIAL PROVISIONS INCLUDED IN THIS PROPOSAL.

THE WORK INCLUDED IN THIS SECTION CONSISTS OF PAVEMENT PATCHING, MILLING, PLACEMENT OF HOT-MIX ASPHALT SURFACE COURSE, AGGREGATE SHOULDERS, PAVEMENT MARKING, AND ANY OTHER WORK NECESSARY TO COMPLETE THIS SECTION.

PAVEMENT MARKING SHALL BE APPLIED IN ACCORDANCE WITH SECTION 780 OF THE STANDARD SPECIFICATIONS. SHORT TERM PAVEMENT MARKING SHALL BE APPLIED TO THE MILLED SURFACE, BITUMINOUS MATERIALS (PRIME COAT), AND HOT-MIX ASPHALT SURFACE COURSE AS SPECIFIED IN SECTION 703 OF THE STANDARD SPECIFICATIONS. TEMPORARY TAPE SHALL BE USED ON THE SURFACE COURSE AND PAINT SHALL BE USED ON MILLED SURFACES.

THE TOTAL QUANTITY OF PAINT PAVEMENT MARKING - LINE 4" CONSISTS OF 11,326 FEET OF YELLOW AND 45,944 FEET OF WHITE. THE TOTAL QUANTITY OF PAINT PAVEMENT MARKING - LINE 8" CONSISTS OF 32 FEET OF YELLOW. THIS PAVEMENT MARKING QUANTITY IS FOR PAINTING DIAGONALS IN THE PAINTED MEDIAN NEAR THE INTERSECTION OF ILLINOIS ROUTES 49 AND 16. THE TOTAL QUANTITY OF PAINT PAVEMENT MARKING - LINE 24" CONSISTS OF 27 FEET OF WHITE. THIS PAVEMENT MARKING QUANTITY IS FOR PAINTING STOP BARS NEAR THE INTERSECTION OF ILLINOIS ROUTES 49 AND 16.

RAISED REFLECTIVE PAVEMENT MARKERS SHALL BE INSTALLED IN ACCORDANCE WITH SECTION 781 OF THE STANDARD SPECIFICATIONS. THE TOTAL QUANTITY OF RAISED REFLECTIVE PAVEMENT MARKERS CONSISTS OF 291 TWO-WAY AMBER MARKERS.

THE MATERIAL USED FOR AGGREGATE SHOULDERS, TYPE B SHALL BE CRUSHED STONE, CRUSHED CONCRETE, OR RAP. THE MATERIAL USED FOR AGGREGATE SURFACE COURSE, TYPE B SHALL BE CRUSHED STONE OR CRUSHED CONCRETE.

THE EXISTING PAVEMENT SHALL BE PATCHED IN ACCORDANCE WITH SECTION 442 OF THE STANDARD SPECIFICATIONS AND THE SPECIAL PROVISIONS. THE QUANTITY OF PATCHING SHOWN ON THE PLANS IS AN ESTIMATE ONLY. THE FINAL LOCATIONS AND QUANTITY SHALL BE DETERMINED BY THE ENGINEER IN THE FIELD.

THE FOLLOWING MIXTURE REQUIREMENTS ARE APPLICABLE FOR THIS PROJECT:

MIXTURE USE:	PAVEMENT PATCHING
APPLICATION:	HOT-MIX ASPHALT BINDER COURSE, IL-19.0, N70
PG GRADE:	PG 64-22
DESIGN AIR VOIDS:	4.0% @ DESIGN = 70
MIXTURE COMPOSITION:	IL-19.0
FRICTION AGGREGATE:	N/A

MIXTURE USE:	SURFACE COURSE (1 1/2")
APPLICATION:	HOT MIX ASPHALT SURFACE COURSE, MIX C, N70
PG GRADE:	PG 64-22
DESIGN AIR VOIDS:	4.0% @ DESIGN = 70
MIXTURE COMPOSITION:	IL-9.5
FRICTION AGGREGATE:	MIXTURE C

MIXTURE USE:	INCIDENTAL HMA
APPLICATION:	HOT MIX ASPHALT SURFACE COURSE, MIX C, N50
PG GRADE:	PG 64-22
DESIGN AIR VOIDS:	4.0% @ DESIGN = 50
MIXTURE COMPOSITION:	IL-9.5
FRICTION AGGREGATE:	MIXTURE C

THE CONTRACTOR SHALL PROVIDE INTERNET ACCESSIBILITY TO THE HOT-MIX ASPHALT PLANT QUALITY CONTROL LAB SO THAT HOT-MIX ASPHALT PLANT REPORTS CAN BE E-MAILED TO THE DISTRICT HEADQUARTERS. THIS WORK SHALL BE INCLUDED IN THE COST OF ALL HOT-MIX ASPHALT ITEMS.

THE CONTRACTOR SHALL USE EITHER RC-70 OR AN EMULSIFIED POLYMER PRIME SS-1HP FOR THE PAY ITEM BITUMINOUS MATERIALS (PRIME COAT).

THE RESIDENT ENGINEER SHALL BE THE SOLE JUDGE CONCERNING THE CURING TIME FOR THE HOT-MIX ASPHALT SURFACE COURSE.

THE PAY ITEM TEMPORARY RAMP HAS BEEN INCLUDED FOR THE CONSTRUCTION OF TEMPORARY RAMPS IN ACCORDANCE WITH ARTICLE 406.08 OF THE STANDARD SPECIFICATIONS. THE CONTRACT UNIT PRICE PER SQUARE YARD FOR TEMPORARY RAMP SHALL INCLUDE BOTH THE INSTALLATION AND THE REMOVAL OF THE RAMPS.

THE FOLLOWING RATES OF APPLICATION HAVE BEEN USED IN CALCULATING PLAN QUANTITIES:

HOT MIX ASPHALT	112 LBS/SO YD/IN
BITUMINOUS MATERIALS PRIME COAT	0.10 GALLONS/SO YD
AGGREGATE PRIME COAT	2.00 LBS/SO YD
GRANULAR MATERIAL	2.05 TONS/CU YD

FILE NAME =	USER NAME = *USER*	DESIGNED -	REVISED -	<b>STATE OF ILLINOIS DEPARTMENT OF TRANSPORTATION</b>	<b>INDEX OF SHEETS AND GENERAL NOTES</b>			F.A.P. RTE.	SECTION	COUNTY	TOTAL SHEETS	SHEET NO.
#FILE#		DRAWN -	REVISED -		832	4RS-1, 114RS-2	COLES	22	2			
	PLOT SCALE = *SCALE*	CHECKED -	REVISED -		CONTRACT NO. 74418							
	PLOT DATE = *DATE*	DATE -	REVISED -		ILLINOIS FED. AID PROJECT							
					SCALE: NA	SHEET NO. 1	OF 1	SHEETS	STA.	TO STA.		

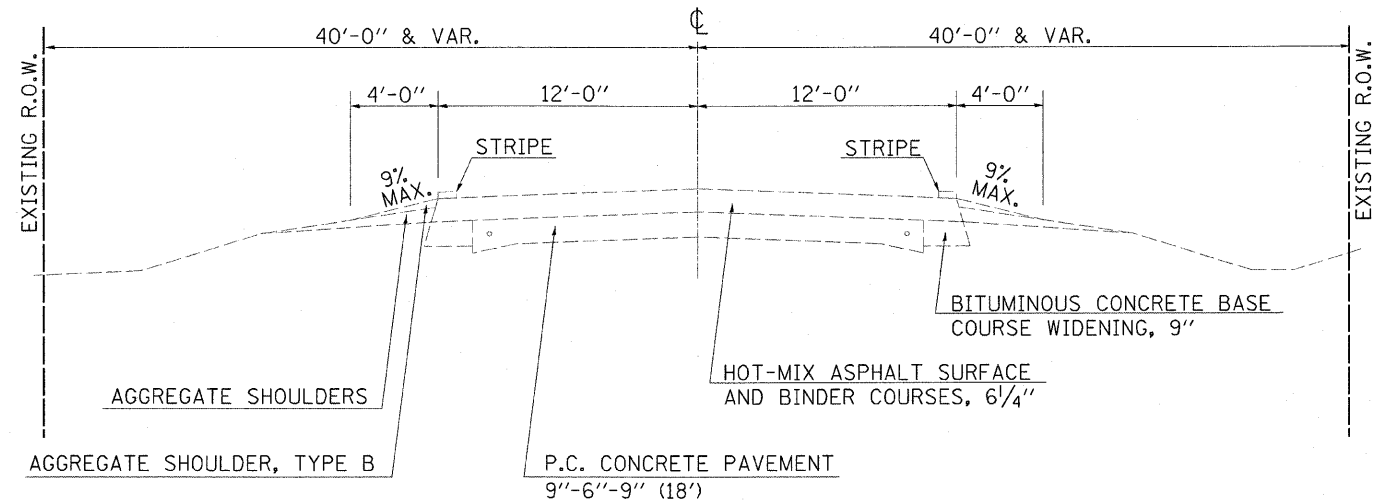
SUMMARY OF QUANTITIES			TOTAL	CONSTRUCTION
CODE NO	ITEM	UNIT	QUANTITIES	TYPE CODE
				100% STATE
				1000
40200800	AGGREGATE SURFACE COURSE, TYPE B	TON	14	14
40600100	BITUMINOUS MATERIALS (PRIME COAT)	GALLON	6354	6354
40600300	AGGREGATE (PRIME COAT)	TON	127	127
40600895	CONSTRUCTING TEST STRIP	EACH	1	1
40600982	HOT-MIX ASPHALT SURFACE REMOVAL - BUTT JOINT	SQ YD	280	280
40600990	TEMPORARY RAMP	SQ YD	123	123
40603315	HOT-MIX ASPHALT SURFACE COURSE, MIX "C", N70	TON	5337	5337
40800050	INCIDENTAL HOT-MIX ASPHALT SURFACING	TON	128	128
44000155	HOT-MIX ASPHALT SURFACE REMOVAL, 1 1/2"	SQ YD	949	949
44000198	HOT-MIX ASPHALT SURFACE REMOVAL, VARIABLE DEPTH	SQ YD	62311	62311
44200176	PAVEMENT PATCHING, TYPE I, 15 INCH	SQ YD	20	20
44200180	PAVEMENT PATCHING, TYPE II, 15 INCH	SQ YD	980	980
44200184	PAVEMENT PATCHING, TYPE III, 15 INCH	SQ YD	250	250
44200186	PAVEMENT PATCHING, TYPE IV, 15 INCH	SQ YD	65	65
48101200	AGGREGATE SHOULDERS, TYPE B	TON	2115	2115
66700110	PERMANENT SURVEY MARKERS TO BE ADJUSTED	EACH	1	1
67000500	ENGINEER'S FIELD OFFICE, TYPE B	CAL MO	2	2
67100100	MOBILIZATION	L SUM	1	1
70100460	TRAFFIC CONTROL AND PROTECTION, STANDARD 701306	L SUM	1	1
70100600	TRAFFIC CONTROL AND PROTECTION, STANDARD 701336	L SUM	1	1
70300100	SHORT-TERM PAVEMENT MARKING	FOOT	6960	6960
70300220	TEMPORARY PAVEMENT MARKING - LINE 4"	FOOT	57270	57270
70301000	WORK ZONE PAVEMENT MARKING REMOVAL	SQ FT	773	773
* 78001110	PAINT PAVEMENT MARKING - LINE 4"	FOOT	57270	57270
* 78001140	PAINT PAVEMENT MARKING - LINE 8"	FOOT	32	32
* 78001180	PAINT PAVEMENT MARKING - LINE 24"	FOOT	27	27
* 78100100	RAISED REFLECTIVE PAVEMENT MARKER	EACH	291	291
X0301232	SURVEY MARKER VAULT	EACH	2	2
Z0025500	FURNISHING AND INSTALLING PROPERTY MARKERS	EACH	1	1
Z0055600	RUMBLE STRIP	SQ YD	108	108

*\*Specialty Items*

FILE NAME =	USER NAME = swartzrw	DESIGNED -	REVISED -	<b>STATE OF ILLINOIS DEPARTMENT OF TRANSPORTATION</b>	<b>SUMMARY OF QUANTITIES</b>				F.A.P. RTE.	SECTION	COUNTY	TOTAL SHEETS	SHEET NO.
ci:\pwwork\pwwork\swartzrw\d0147717\d774	118-sht-soq.dgn	DRAWN -	REVISED -		SCALE: NA	SHEET NO. 1 OF 1 SHEETS	STA.	TO STA.	832	4RS-1, 114RS-2	COLES	22	3
	PLOT SCALE = 100.0000' / IN.	CHECKED -	REVISED -						<b>CONTRACT NO. 74418</b>				
	PLOT DATE = 11/24/2009	DATE -	REVISED -		ILLINOIS FED. AID PROJECT								

## EXISTING TYPICAL CROSS SECTION

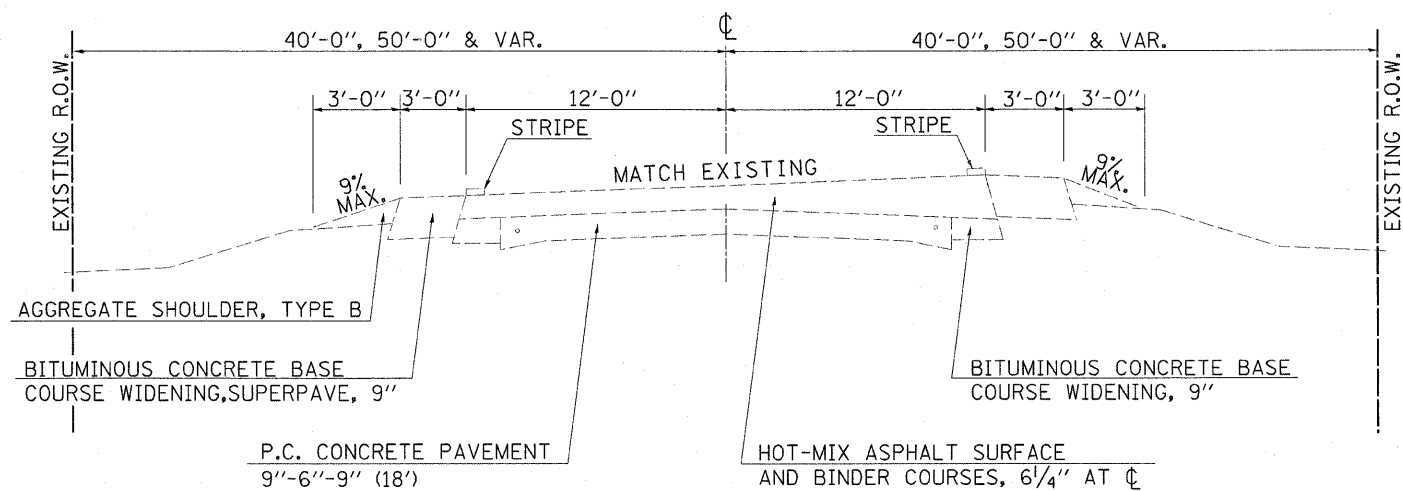
STATION	TO	STATION
655+75		823+47
834+49		845+28
848+35		885+69



BITUMINOUS SHOULDER		
STATION	TO	STATION
RT. 722+38		RT. 733+10
LT. 749+90		LT. 760+65
LT. 811+09		LT. 823+47
		WIDTH
		3'

## EXISTING TYPICAL CROSS SECTION

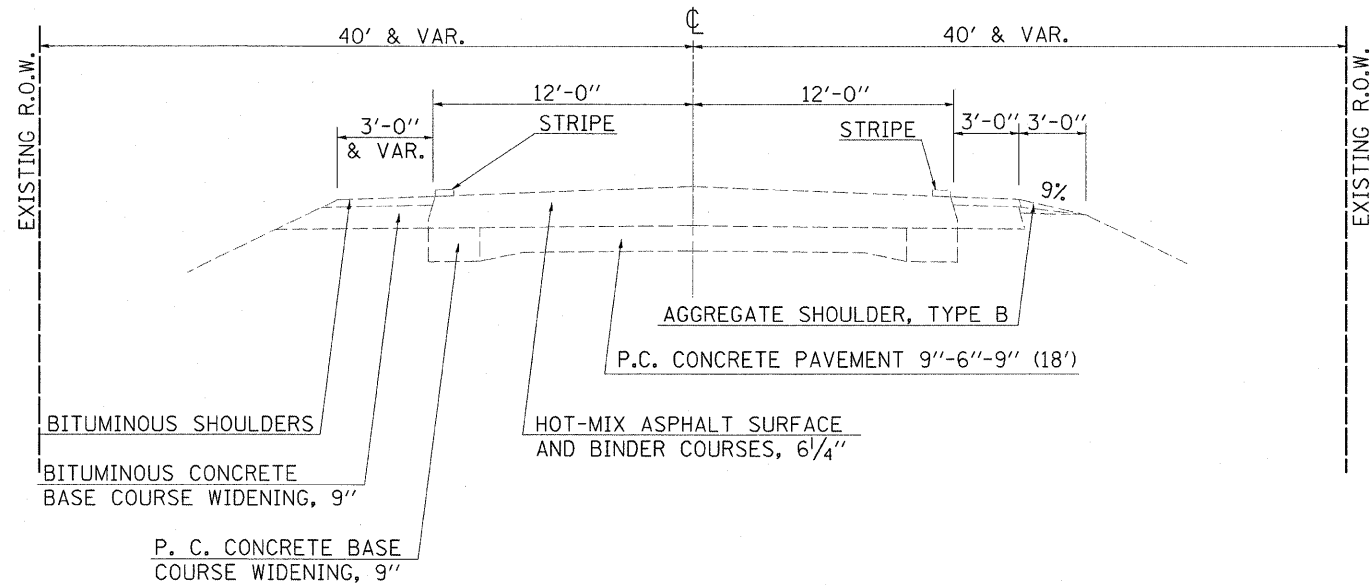
STATION	TO	STATION
823+47		834+49



BITUMINOUS SHOULDER		
STATION	TO	STATION
RT. 823+47		RT. 834+49
		WIDTH
		3'

## EXISTING TYPICAL CROSS SECTION

STATION	TO	STATION
845+28		846+81
847+85		848+35
PAVING OMISSION		
846+81		847+85

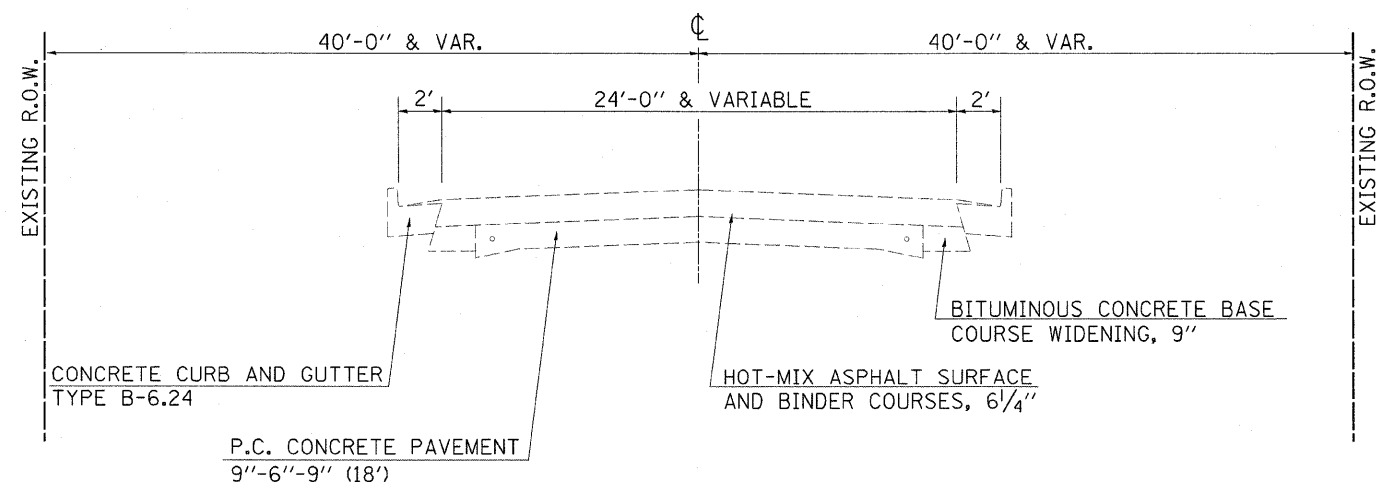


BITUMINOUS SHOULDER		
STATION	STATION	WIDTH
RT/LT 845+28 TO RT/LT 846+81		3'
RT/LT 847+85 TO RT/LT 848+35		3'

## EXISTING TYPICAL CROSS SECTION

STATION	TO	STATION
885+69		887+87

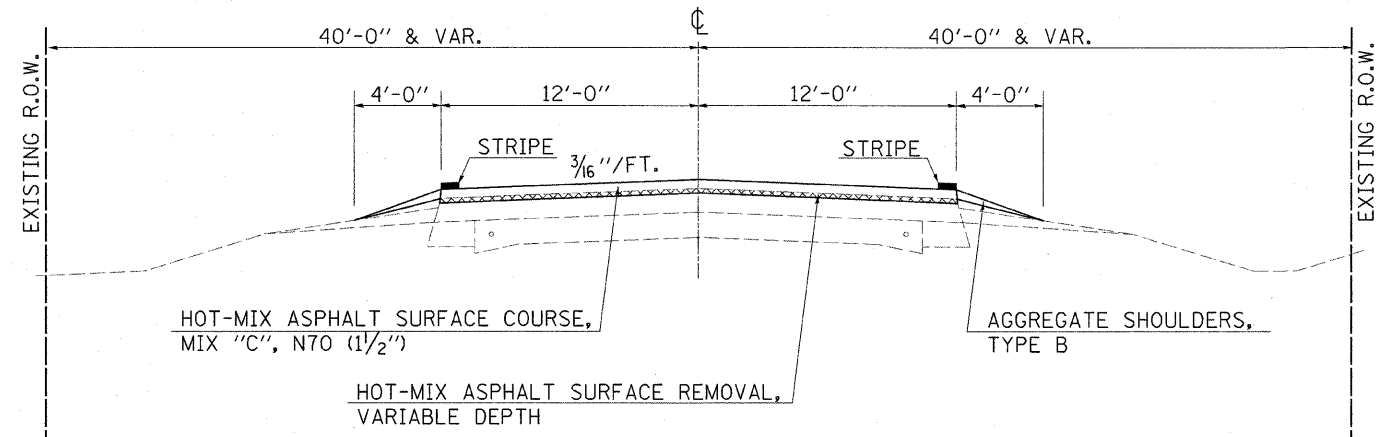
INTERSECTION OF IL. RTE. 49 AND IL. RTE. 16



FILE NAME =	USER NAME = swartzw	DESIGNED -	REVISED -	<b>STATE OF ILLINOIS DEPARTMENT OF TRANSPORTATION</b>	<b>TYPICAL CROSS SECTIONS</b>	F.A.P. RTE.	SECTION	COUNTY	TOTAL SHEETS	SHEET NO.	
c:\pwork\pwork\swartzw\d0147717\0774	H18-sht-typicals.dgn	DRAWN -	REVISED -			832	4RS-1, 114RS-2	COLES	22	5	
PLOT SCALE = 50.0000 "/td> <td>CHECKED -</td> <td>REVISED -</td> <td>SCALE: NA</td> <td>SHEET NO. 2 OF 4 SHEETS</td> <td>STA.</td> <td>TO STA.</td> <td colspan="3" style="text-align: center;">CONTRACT NO. 74418</td>	CHECKED -	REVISED -	SCALE: NA			SHEET NO. 2 OF 4 SHEETS	STA.	TO STA.	CONTRACT NO. 74418		
PLOT DATE = 11/24/2009	DATE -	REVISED -	ILLINOIS FED. AID PROJECT								

## PROPOSED TYPICAL CROSS SECTION

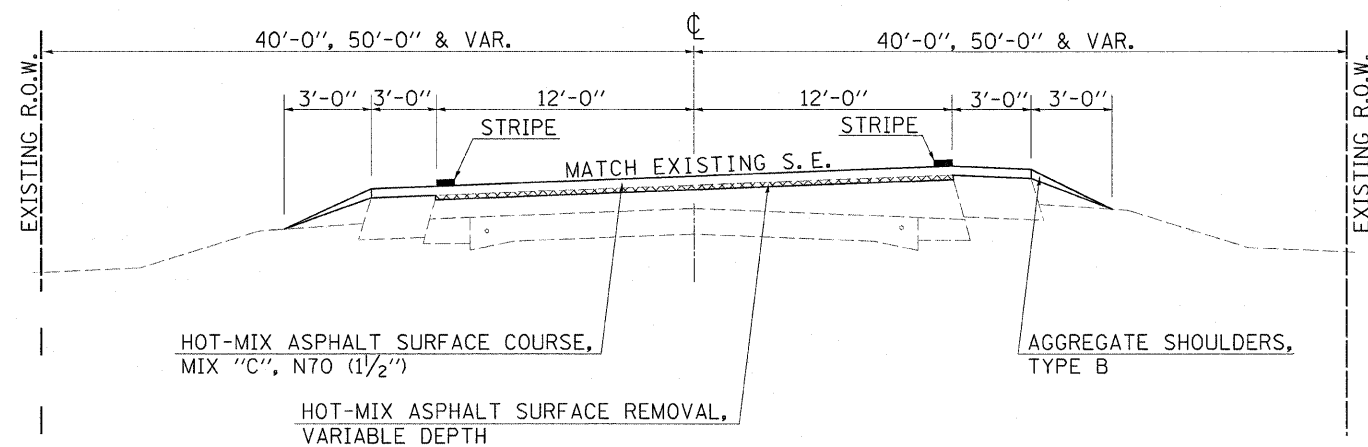
STATION	TO	STATION
655+75		823+47
834+49		845+28
848+35		885+69



BITUMINOUS SHOULDER		
STATION	TO	STATION
RT. 722+38		RT. 733+10
LT. 749+90		LT. 760+65
LT. 811+09		LT. 823+47
		WIDTH
		3'

## PROPOSED TYPICAL CROSS SECTION

STATION	TO	STATION
823+47		834+49



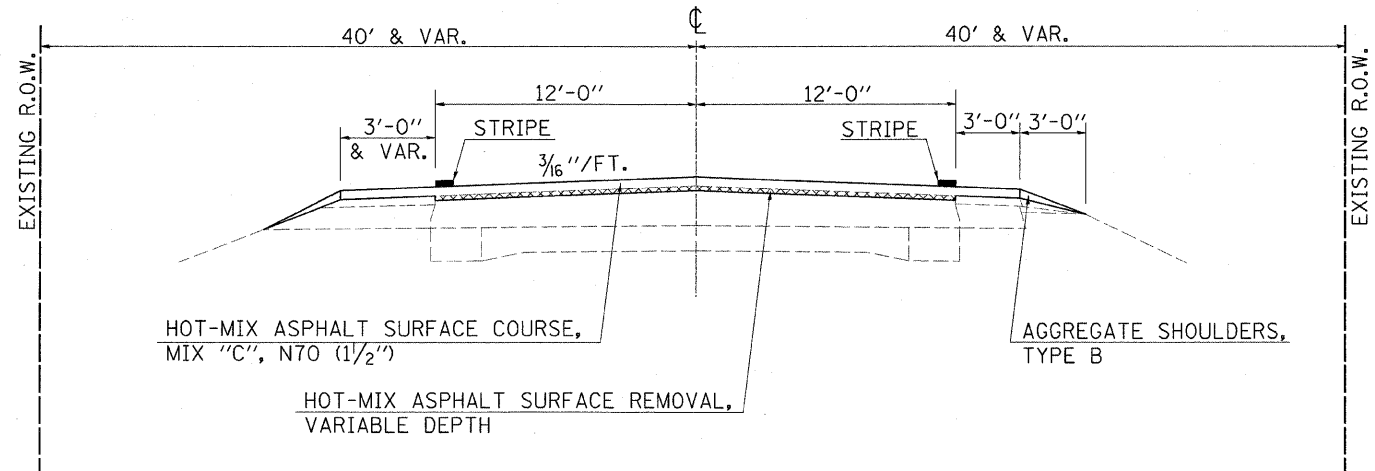
BITUMINOUS SHOULDER		
STATION	TO	STATION
RT. 823+47		RT. 834+49
		WIDTH
		3'

FILE NAME =	USER NAME = swartzrw	DESIGNED -	REVISED -	<b>STATE OF ILLINOIS DEPARTMENT OF TRANSPORTATION</b>	<b>TYPICAL CROSS SECTIONS</b>	F.A.P. RTE.	SECTION	COUNTY	TOTAL SHEETS	SHEET NO.	
ci:\pw\work\p1dot\swartzrw\d8147717\077418-sht-typicals.dgn		DRAWN -	REVISED -			832	4RS-1, 114RS-2	COLES	22	6	
PLOT SCALE = 50.0000' / IN.		CHECKED -	REVISED -			CONTRACT NO. 74418					
PLOT DATE = 11/24/2009		DATE -	REVISED -			ILLINOIS FED. AID PROJECT					
						SCALE: NA	SHEET NO. 3 OF 4 SHEETS		STA.	TO STA.	

## PROPOSED TYPICAL CROSS SECTION

<u>STATION</u>	<u>TO</u>	<u>STATION</u>
845+28		846+81
847+85		848+35

<u>PAVING OMISSION</u>		
846+81		847+85

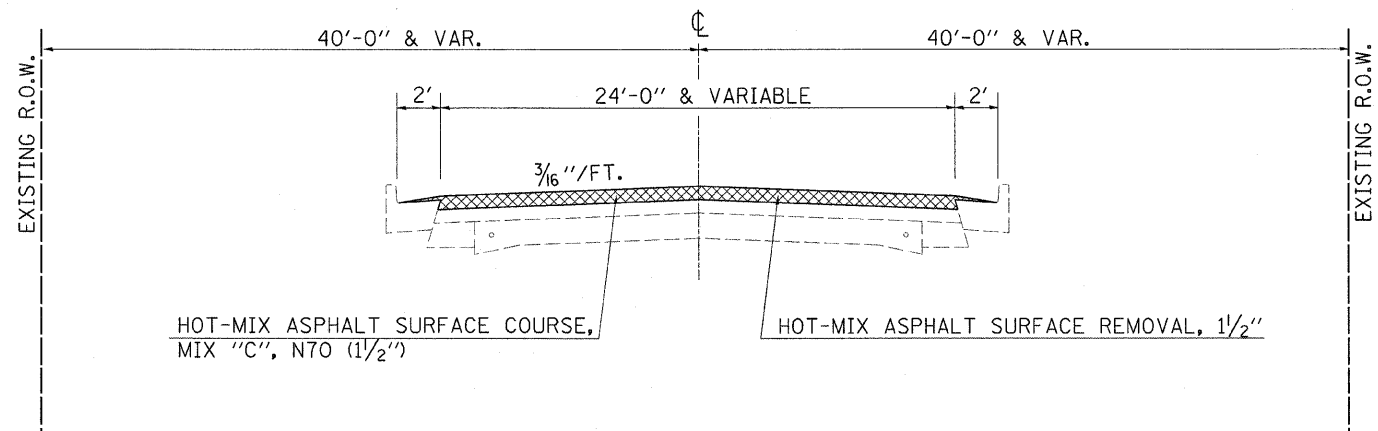


<u>BITUMINOUS SHOULDER</u>		
<u>STATION</u>	<u>STATION</u>	<u>WIDTH</u>
RT/LT 845+28 TO RT/LT 846+81		3'
RT/LT 847+85 TO RT/LT 848+35		3'

## PROPOSED TYPICAL CROSS SECTION

<u>STATION</u>	<u>TO</u>	<u>STATION</u>
885+69		887+87

INTERSECTION OF IL. RTE. 49 AND IL. RTE. 16



FILE NAME =	USER NAME = swartzw	DESIGNED -	REVISED -	<b>STATE OF ILLINOIS DEPARTMENT OF TRANSPORTATION</b>	<b>TYPICAL CROSS SECTIONS</b>	F.A.P. RTE.	SECTION	COUNTY	TOTAL SHEETS	SHEET NO.	
ci:\pwork\p1dot\swartzw\d0147717\077418-sht-typicals.dgn		DRAWN -	REVISED -			832	4RS-1, 114RS-2	COLES	22	7	
PLOT SCALE = 50.0000" / IN.		CHECKED -	REVISED -			CONTRACT NO. 74418					
PLOT DATE = 11/24/2009		DATE -	REVISED -			ILLINOIS FED. AID PROJECT					
					SCALE: NA	SHEET NO. 4 OF 4 SHEETS		STA.	TO STA.		

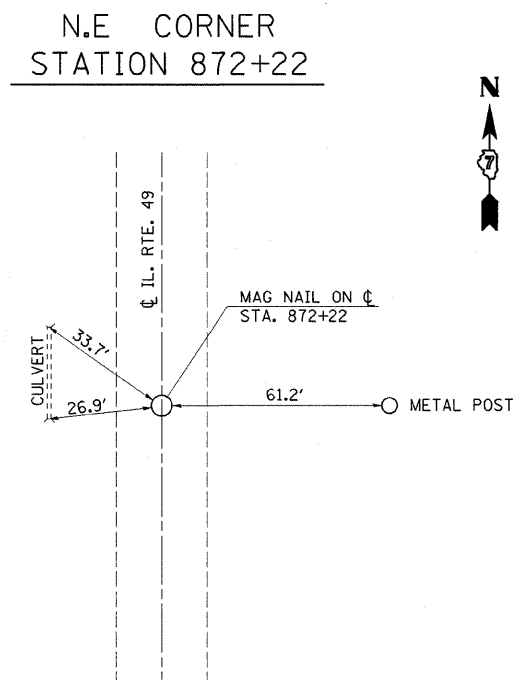
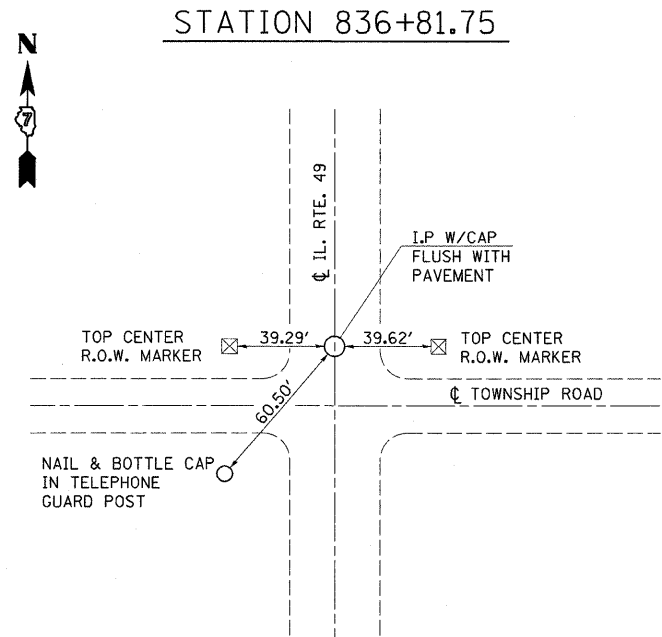
RESURFACING SCHEDULE												
STATION TO STATION		LENGTH	AVERAGE WIDTH OF RESURFACING ( PAVEMENT PLUS HMA SHOULDERS)	AREA	HOT-MIX ASPHALT SURFACE REMOVAL - BUTT JOINT	HOT-MIX ASPHALT SURFACE REMOVAL, VARIABLE DEPTH	HOT-MIX ASPHALT SURFACE REMOVAL, 1 1/2"	BITUMINOUS MATERIALS ( PRIME COAT)	AGGREGATE ( PRIME COAT)	HOT-MIX ASPHALT SURFACE COURSE, MIX "C", N70	AGGREGATE SHOULDERS, TYPE B	TEMPORARY RAMP
		FOOT	FOOT	SQ YD	SQ YD	SQ YD	SQ YD	GALLON	TON	TON	TON	SQ YD
655+75.00	TO 656+05.00	30.00	24.0	80	80	0	0	8	0.2	7	2	13.3
656+05.00	TO 722+38.00	6633.00	24.0	17688	0	17688	0	1769	35.4	1486	614	0.0
722+38.00	TO 733+10.00	1072.00	27.0	3216	0	3216	0	322	6.4	270	95	0.0
733+10.00	TO 749+90.00	1680.00	24.0	4480	0	4480	0	448	9.0	376	150	0.0
749+90.00	TO 760+65.00	1075.00	27.0	3225	0	3225	0	323	6.5	271	102	0.0
760+65.00	TO 811+09.00	5044.00	24.0	13451	0	13451	0	1345	26.9	1130	462	0.0
811+09.00	TO 823+47.00	1238.00	27.0	3714	0	3714	0	371	7.4	312	111	0.0
823+47.00	TO 834+49.00	1102.00	27.0	3306	0	3306	0	331	6.6	278	103	0.0
834+49.00	TO 845+28.00	1079.00	24.0	2877	0	2877	0	288	5.8	242	95	0.0
845+28.00	TO 846+51.00	123.00	30.0	410	0	410	0	41	0.8	34	9	0.0
846+51.00	TO 846+81.00	30.00	30.0	100	100	0	0	10	0.2	8	3	13.3
846+81.00	TO 847+85.00	104.00	BRIDGE - PAVING OMISSION									
847+85.00	TO 848+15.00	30.00	30.0	100	100	0	0	10	0.2	8	3	13.3
848+15.00	TO 848+35.00	20.00	30.0	67	0	67	0	7	0.1	6	2	0.0
848+35.00	TO 885+39.00	3704.00	24.0	9877	0	9877	0	988	19.8	830	338	0.0
885+39.00	TO 885+69.00	30.00	28.0	93	0	0	93	9	0.2	8	3	0.0
885+69.00	TO 887+87.00	218.00	VAR.	856	0	0	856	86	1.7	72	21	83.3
<b>TOTALS</b>												
				62684	280	62311	949	6354	127	5337	2115	123



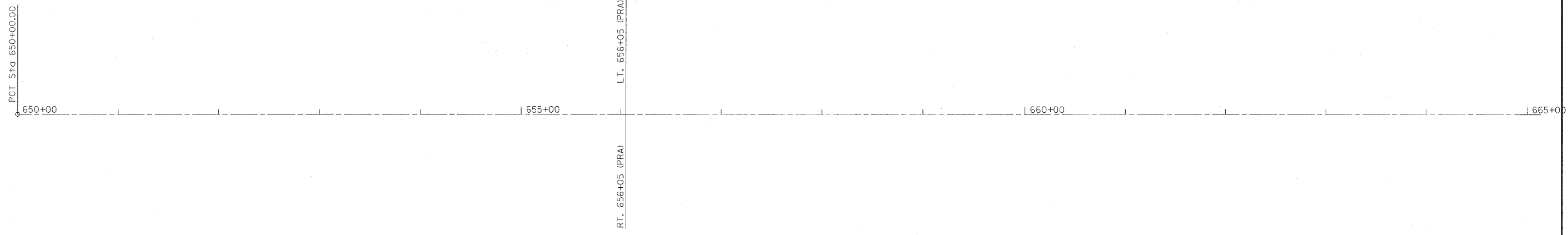
PAVEMENT MARKING SCHEDULE		LENGTH	PAINT PAVEMENT MARKING - LINE 4"	TEMPORARY PAVEMENT MARKING - LINE 4"	SHORT-TERM PAVEMENT MARKING	WORK ZONE PAVEMENT MARKING REMOVAL	RAISED REFLECTIVE PAVEMENT MARKER	PAINT PAVEMENT MARKING - LINE 8"	PAINT PAVEMENT MARKING - LINE 24"
STATION TO STATION		FOOT	FOOT	FOOT	FOOT	SQ FT	EACH	FOOT	FOOT
655+75.00	TO 714+93.00	5918.0	13196	13196	1776	197.3	74	0	0
714+93.00	TO 724+53.00	960.0	3120	3120	288	32.0	12	0	0
724+53.00	TO 727+54.00	301.0	1204	1204	96	10.7	4	0	0
727+54.00	TO 739+18.00	1164.0	3623	3623	348	38.7	15	0	0
739+18.00	TO 744+36.00	518.0	1166	1166	156	17.3	6	0	0
744+36.00	TO 754+60.00	1024.0	3328	3328	312	34.7	13	0	0
754+60.00	TO 755+93.00	133.0	532	532	36	4.0	2	0	0
755+93.00	TO 764+49.00	856.0	2782	2782	252	28.0	11	0	0
764+49.00	TO 881+47.00	11698.0	26147	26147	3504	389.3	146	0	0
881+47.00	TO 884+91.00	344.0	1118	1118	108	12.0	4	0	0
884+91.00	TO 887+30.00	239.0	956	956	72	8.0	3	32	0
887+30.00	TO 887+74.00	44.0	99	99	12	1.3	1	0	27
TOTALS		23199	57270	57270	6960	773.3	291	32	27

PAVEMENT PATCHING SCHEDULE	PAVEMENT PATCHING, TYPE I 15 INCH	PAVEMENT PATCHING, TYPE II 15 INCH	PAVEMENT PATCHING, TYPE III 15 INCH	PAVEMENT PATCHING, TYPE IV 15 INCH
	LOCATION	SQ YD	SQ YD	SQ YD
IL 49 (NB)	10	460	138	36
IL 49 (SB)	10	520	112	29
TOTALS	20	980	250	65

SURVEY MONUMENT SCHEDULE			PERMANENT SURVEY MARKERS TO BE ADJUSTED	SURVEY MARKER VAULT	FURNISH AND INSTALLING PROPERTY MARKERS
STATION	O/S	DESCRIPTION	EACH	EACH	EACH
805+13	4' LT	SURVEY MARKER VAULT	1		
836+81.75	0	IRON PIN BURIED +/- 4 INCHES		1	
872+22	0	MAG NAIL IN PAVEMENT		1	1
TOTALS			1	2	1



FILE NAME =	USER NAME = swartzw	DESIGNED -	REVISED - MMO 12-99	<b>STATE OF ILLINOIS DEPARTMENT OF TRANSPORTATION</b>	<b>SURVEY MARKERS AND MONUMENT TIES</b>	F.A.P. RTE.	SECTION	COUNTY	TOTAL SHEETS	SHEET NO.		
c:\pwork\pwork\swartzw\08147717\077418-shr-details.dgn						832	4RS-1, 114RS-2	COLES	22	10		
PLOT SCALE = 100,0000' / IN.						CONTRACT NO. 74418						
PLOT DATE = 11/24/2009						ILLINOIS FED. AID PROJECT						
					SCALE: NA	SHEET NO. 1 OF 1 SHEETS		STA. TO STA.				



**LEGEND**

- FE - FIELD ENTRANCE
- PE - PRIVATE ENTRANCE
- PRA - PUBLIC ROAD APPROACH
- MBT - MAILBOX TURNOUT



**LEGEND**

- FE - FIELD ENTRANCE
- PE - PRIVATE ENTRANCE
- PRA - PUBLIC ROAD APPROACH
- MBT - MAILBOX TURNOUT

FILE NAME = c:\pw_work\p\dot\swartzw\d0147717\0774	USER NAME = swartzw	DESIGNED -	REVISED -	<b>STATE OF ILLINOIS DEPARTMENT OF TRANSPORTATION</b>	<b>PLAN SHEET</b>		F.A.P. RTE.	SECTION	COUNTY	TOTAL SHEETS	SHEET NO.
	19-sht-plan.dgn	DRAWN -	REVISED -		832	4RS-1, 114RS-2	COLES	22	11		
PLOT SCALE = 50.0000' / 1" IN.	CHECKED -	REVISED -	SCALE: 50		SHEET NO. 1 OF 8 SHEETS		STA. 650+00 TO STA. 680+00		CONTRACT NO. 74418		
PLOT DATE = 11/24/2009	DATE -	REVISED -	ILLINOIS FED. AID PROJECT								



680+00 685+00 690+00 695+00

RT. 680+50 (PE)

POT Sta 690+18.44

LEGEND

- FE - FIELD ENTRANCE
- PE - PRIVATE ENTRANCE
- PRA - PUBLIC ROAD APPROACH
- MBT - MAILBOX TURNOUT



695+00 700+00 705+00 710+00

L.T. 695+75 (FE)

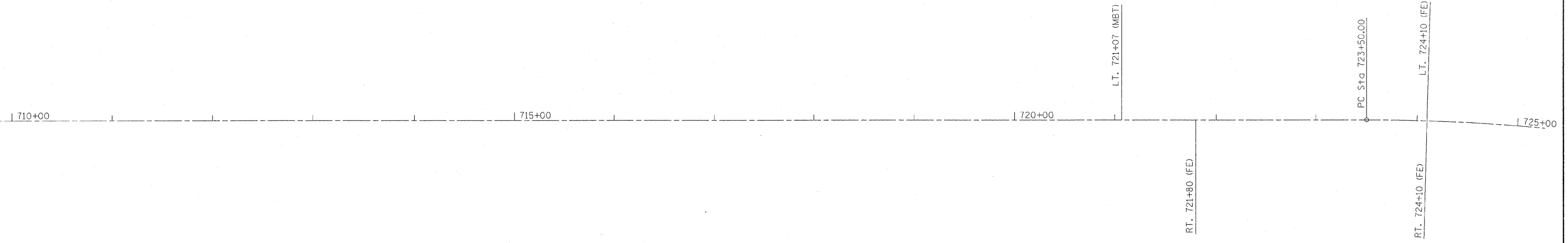
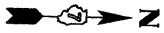
L.T. 704+61 (FE)

RT. 704+61 (FE)

LEGEND

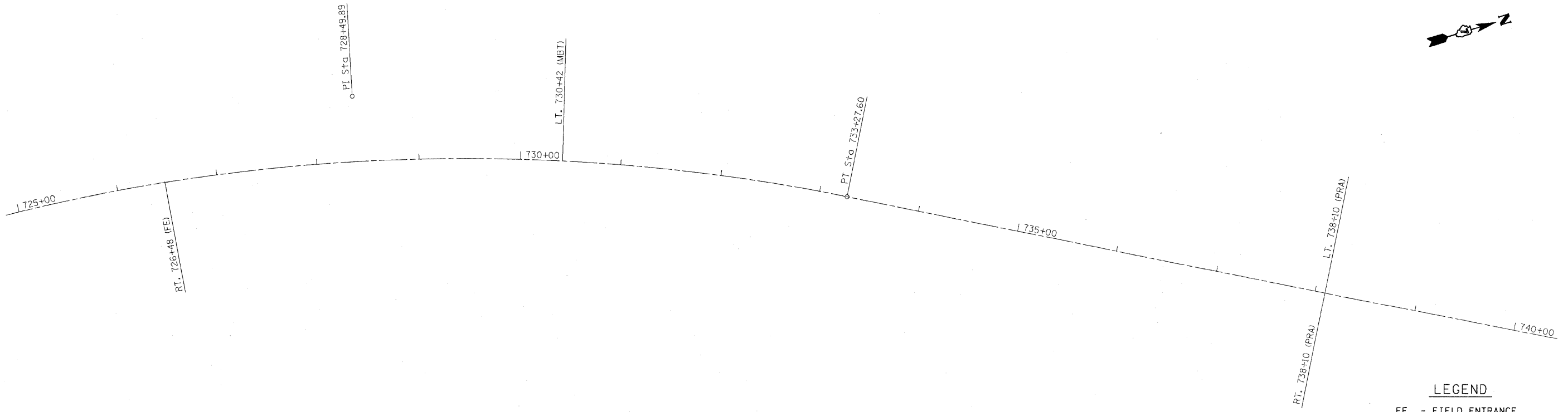
- FE - FIELD ENTRANCE
- PE - PRIVATE ENTRANCE
- PRA - PUBLIC ROAD APPROACH
- MBT - MAILBOX TURNOUT

FILE NAME = c:\pwork\pwork\swartzr\08147717\077418.sht;plan.dgn	USER NAME = swartzr	DESIGNED -	REVISED -	<b>STATE OF ILLINOIS DEPARTMENT OF TRANSPORTATION</b>	<b>PLAN SHEET</b>			F.A.P. RTE.	SECTION	COUNTY	TOTAL SHEETS	SHEET NO.
	PLOT SCALE = 50.0000 ' / IN.	CHECKED -	REVISED -		832	4RS-1, 114RS-2	COLES	22	12			
PLOT DATE = 11/24/2009	DATE -	REVISED -			SCALE: 50	SHEET NO. 2 OF 8 SHEETS	STA. 680+00 TO STA. 710+00	CONTRACT NO. 74418				
							ILLINOIS FED. AID PROJECT					



**LEGEND**

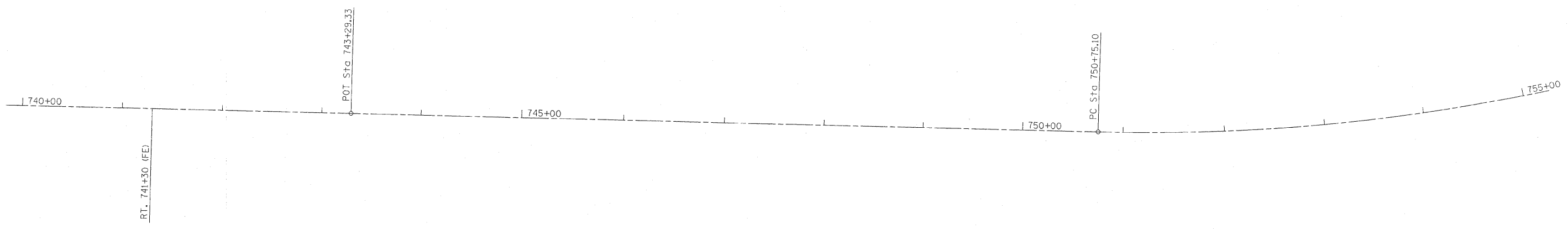
- FE - FIELD ENTRANCE
- PE - PRIVATE ENTRANCE
- PRA - PUBLIC ROAD APPROACH
- MBT - MAILBOX TURNOUT



**LEGEND**

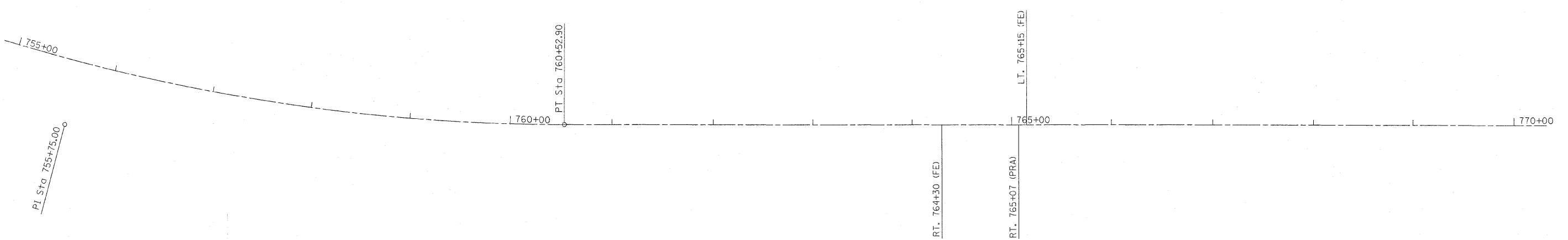
- FE - FIELD ENTRANCE
- PE - PRIVATE ENTRANCE
- PRA - PUBLIC ROAD APPROACH
- MBT - MAILBOX TURNOUT

FILE NAME =	USER NAME = swartzw	DESIGNED -	REVISED -	<b>STATE OF ILLINOIS DEPARTMENT OF TRANSPORTATION</b>	<b>PLAN SHEET</b>			F.A.P. RTE.	SECTION	COUNTY	TOTAL SHEETS	SHEET NO.
ca:\pw_work\pwwdot\swartzw\0147717\0774418-shrtp\an.dgn		DRAWN -	REVISED -		SCALE: 50	SHEET NO. 3 OF 8 SHEETS	STA. 710+00 TO STA. 740+00	832	4RS-1, 114RS-2	COLES	22	13
PLOT SCALE = 50.0000' / IN.		CHECKED -	REVISED -					CONTRACT NO. 74418				
PLOT DATE = 11/24/2009		DATE -	REVISED -					ILLINOIS FED. AID PROJECT				



**LEGEND**

- FE - FIELD ENTRANCE
- PE - PRIVATE ENTRANCE
- PRA - PUBLIC ROAD APPROACH
- MBT - MAILBOX TURNOUT



**LEGEND**

- FE - FIELD ENTRANCE
- PE - PRIVATE ENTRANCE
- PRA - PUBLIC ROAD APPROACH
- MBT - MAILBOX TURNOUT

FILE NAME =	USER NAME = swartzw	DESIGNED -	REVISED -	<b>STATE OF ILLINOIS DEPARTMENT OF TRANSPORTATION</b>	<b>PLAN SHEET</b>			F.A.P. RTE.	SECTION	COUNTY	TOTAL SHEETS	SHEET NO.
c:\pwork\pwork\swartzw\0147717\0774	418-shr-plan.dgn	DRAWN -	REVISED -		832	4RS-1, 114RS-2	COLES	22	14			
	PLOT SCALE = 50.0000' / 1" IN.	CHECKED -	REVISED -		CONTRACT NO. 74418							
	PLOT DATE = 11/24/2009	DATE -	REVISED -		SCALE: 50	SHEET NO. 4 OF 8 SHEETS	STA. 740+00 TO STA. 770+00	ILLINOIS FED. AID PROJECT				



1770+00 | 1775+00 | 1780+00 | 1785+00

**LEGEND**

- FE - FIELD ENTRANCE
- PE - PRIVATE ENTRANCE
- PRA - PUBLIC ROAD APPROACH
- MBT - MAILBOX TURNOUT



1785+00 | 1790+00 | 1795+00 | 1800+00

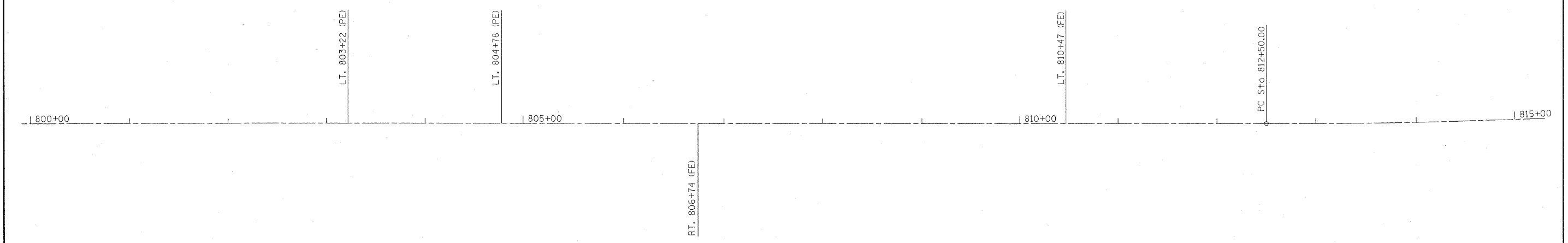
POT Sta 789+45.79

RT. 791+47 (FE)  
LT. 791+47 (FE)

**LEGEND**

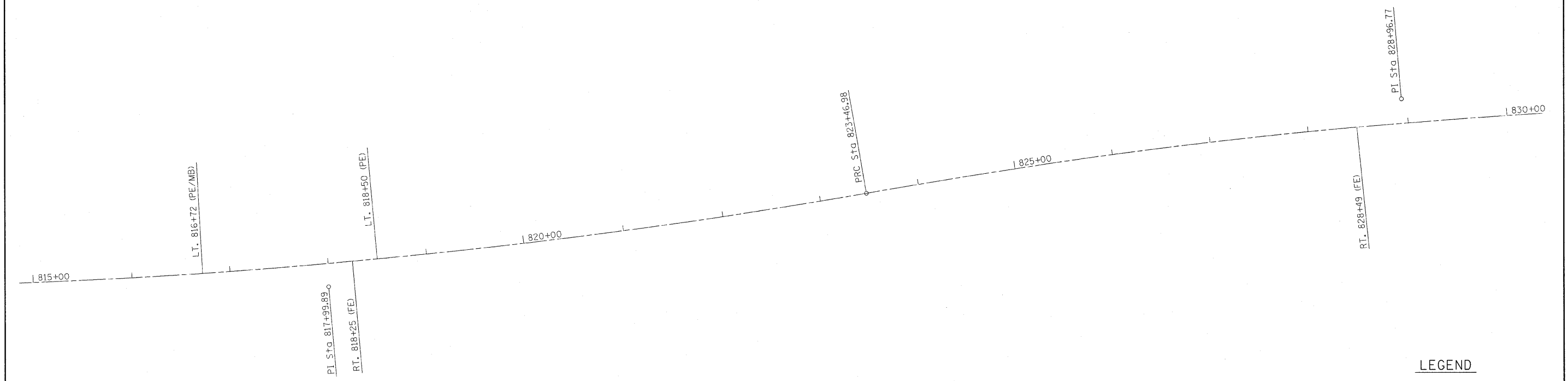
- FE - FIELD ENTRANCE
- PE - PRIVATE ENTRANCE
- PRA - PUBLIC ROAD APPROACH
- MBT - MAILBOX TURNOUT

FILE NAME =	USER NAME = swartzw	DESIGNED -	REVISED -	<b>STATE OF ILLINOIS DEPARTMENT OF TRANSPORTATION</b>	<b>PLAN SHEET</b>			F.A.P. RTE.	SECTION	COUNTY	TOTAL SHEETS	SHEET NO.
c:\p\work\p\dot\swartzw\08147717\0774	18-sht-plan.dgn	DRAWN -	REVISED -		SCALE: 50	SHEET NO. 5 OF 8 SHEETS	STA. 770+00 TO STA. 800+00	832	4RS-1, 114RS-2	COLES	22	15
	PLOT SCALE = 50,0000' / IN.	CHECKED -	REVISED -					<b>CONTRACT NO. 74418</b>				
	PLOT DATE = 11/24/2009	DATE -	REVISED -					ILLINOIS FED. AID PROJECT				



**LEGEND**

- FE - FIELD ENTRANCE
- PE - PRIVATE ENTRANCE
- PRA - PUBLIC ROAD APPROACH
- MBT - MAILBOX TURNOUT

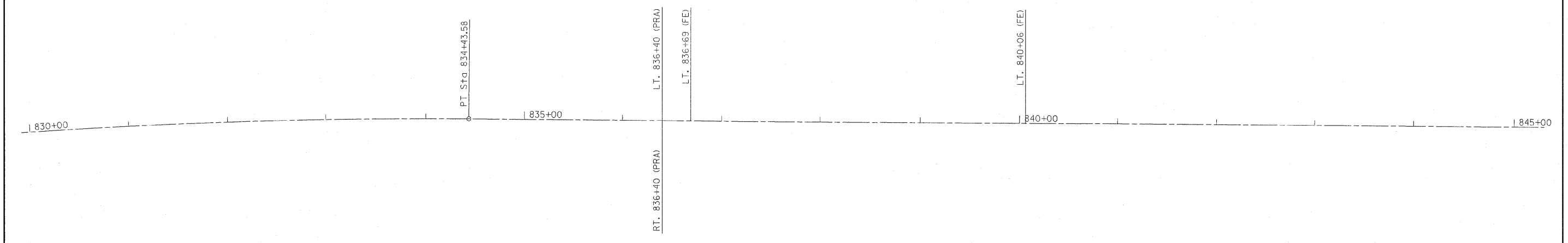
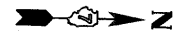


**LEGEND**

- FE - FIELD ENTRANCE
- PE - PRIVATE ENTRANCE
- PRA - PUBLIC ROAD APPROACH
- MBT - MAILBOX TURNOUT

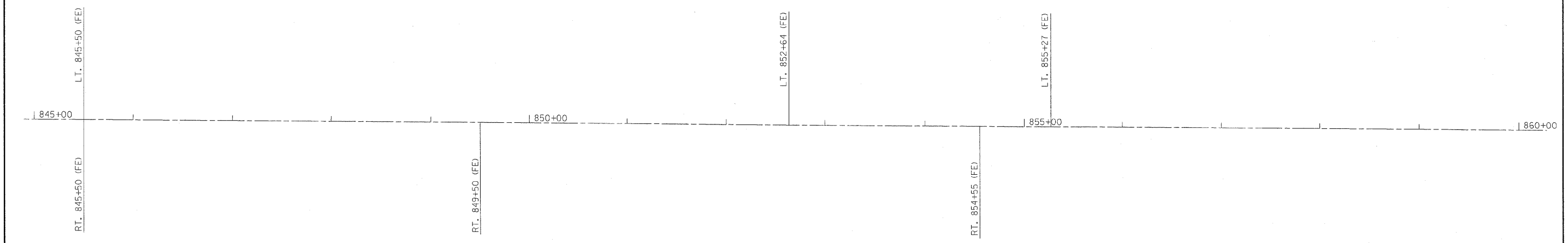
FILE NAME =	USER NAME = swartzw	DESIGNED -	REVISED -	<b>STATE OF ILLINOIS DEPARTMENT OF TRANSPORTATION</b>	<b>PLAN SHEET</b>			F.A.P. RTE.	SECTION	COUNTY	TOTAL SHEETS	SHEET NO.
c:\p\work\p\dot\swartzw\0814717\077418-shit-plan.dgn		DRAWN -	REVISED -		SCALE: 50	SHEET NO. 6 OF 8 SHEETS	STA. 800+00 TO STA. 830+00	832	4RS-1, 114RS-2	COLES	22	16
PLOT SCALE = 50.0000' / IN.		CHECKED -	REVISED -					CONTRACT NO. 74418				
PLOT DATE = 11/24/2009		DATE -	REVISED -					ILLINOIS FED. AID PROJECT				





**LEGEND**

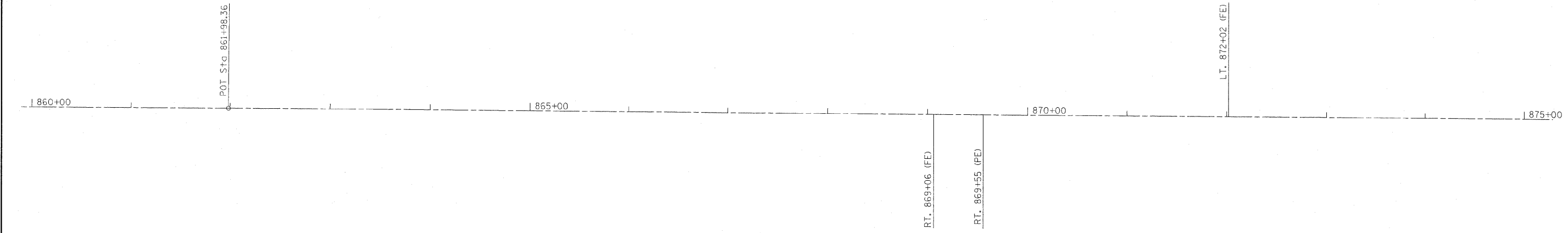
- FE - FIELD ENTRANCE
- PE - PRIVATE ENTRANCE
- PRA - PUBLIC ROAD APPROACH
- MBT - MAILBOX TURNOUT



**LEGEND**

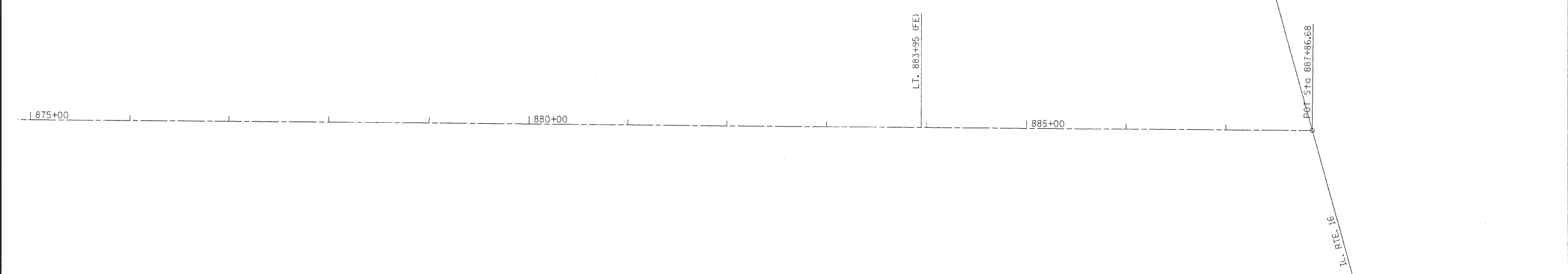
- FE - FIELD ENTRANCE
- PE - PRIVATE ENTRANCE
- PRA - PUBLIC ROAD APPROACH
- MBT - MAILBOX TURNOUT

FILE NAME =	USER NAME = swartzw	DESIGNED -	REVISED -	<b>STATE OF ILLINOIS DEPARTMENT OF TRANSPORTATION</b>	<b>PLAN SHEET</b>			F.A.P. RTE.	SECTION	COUNTY	TOTAL SHEETS	SHEET NO.
ca\piv_work\pivdot\swartzw\d8147717\0774	18-shit-plan.dgn	DRAWN -	REVISED -		832	4RS-1, 114RS-2	COLES	22	17			
	PLOT SCALE = 50.0000' / IN.	CHECKED -	REVISED -		SCALE: 50			SHEET NO. 7 OF 8 SHEETS STA. 830+00 TO STA. 860+00			CONTRACT NO. 74418	
	PLOT DATE = 11/24/2009	DATE -	REVISED -		ILLINOIS FED. AID PROJECT							



**LEGEND**

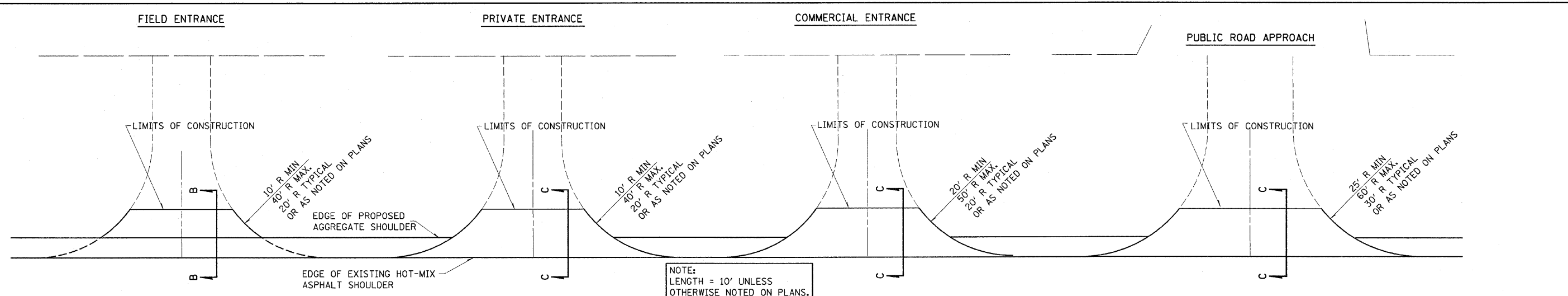
- FE - FIELD ENTRANCE
- PE - PRIVATE ENTRANCE
- PRA - PUBLIC ROAD APPROACH
- MBT - MAILBOX TURNOUT



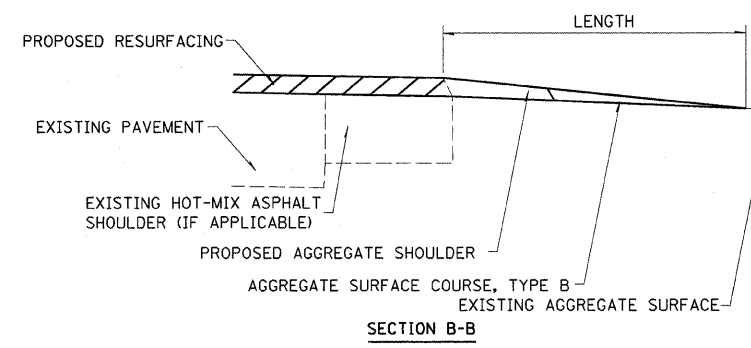
**LEGEND**

- FE - FIELD ENTRANCE
- PE - PRIVATE ENTRANCE
- PRA - PUBLIC ROAD APPROACH
- MBT - MAILBOX TURNOUT

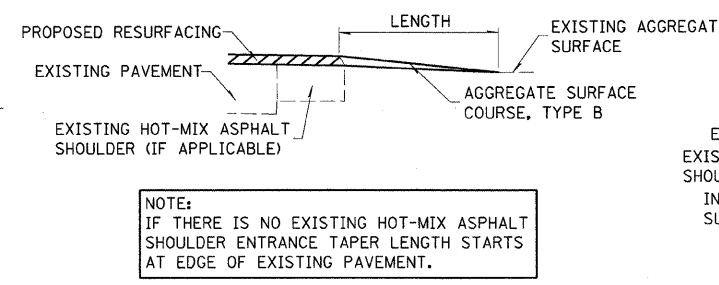
FILE NAME = c:\pwork\pwork\swartzw\d0147717\077418-sht\plan.dgn	USER NAME = swartzw	DESIGNED -	REVISED -	<b>STATE OF ILLINOIS DEPARTMENT OF TRANSPORTATION</b>	<b>PLAN SHEET</b>			F.A.P. RTE.	SECTION	COUNTY	TOTAL SHEETS	SHEET NO.
	PLOT SCALE = 50.0000' / IN.	CHECKED -	REVISED -		832	4RS-1, 114RS-2	COLES	22	18			
PLOT DATE = 11/24/2009	DATE -	REVISED -			SCALE: 50	SHEET NO. 8 OF 8 SHEETS	STA. 860+00 TO STA. 887+86.68	CONTRACT NO. 74418				
ILLINOIS FED. AID PROJECT												



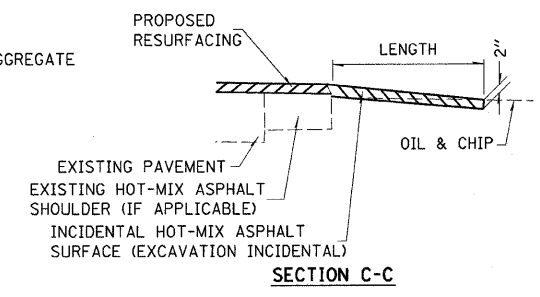
NOTE:  
LENGTH = 10' UNLESS  
OTHERWISE NOTED ON PLANS.



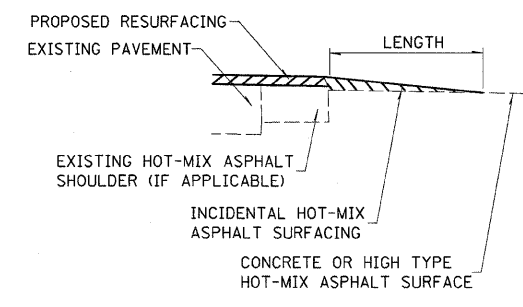
SECTION B-B



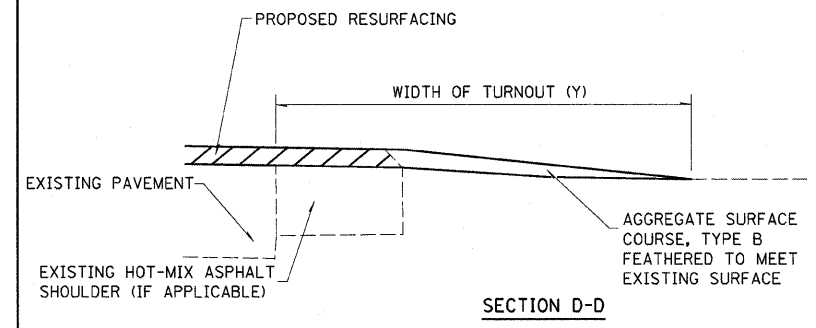
NOTE:  
IF THERE IS NO EXISTING HOT-MIX ASPHALT  
SHOULDER ENTRANCE TAPER LENGTH STARTS  
AT EDGE OF EXISTING PAVEMENT.



SECTION C-C



SECTION C-C



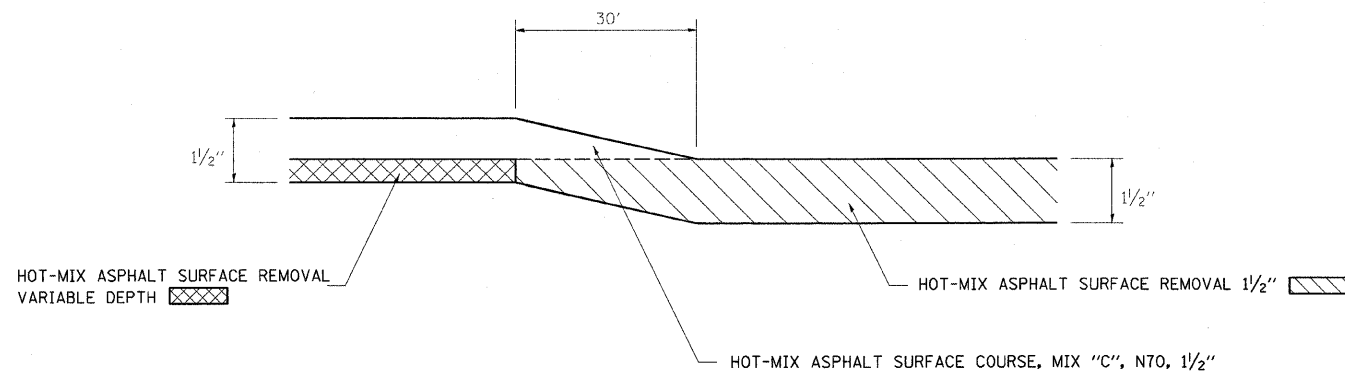
SECTION D-D

**TYPICAL SECTION AT MAILBOX TURNOUT**  
NOTE: SEE STANDARD 406201 FOR MAILBOX TURNOUT DETAILS

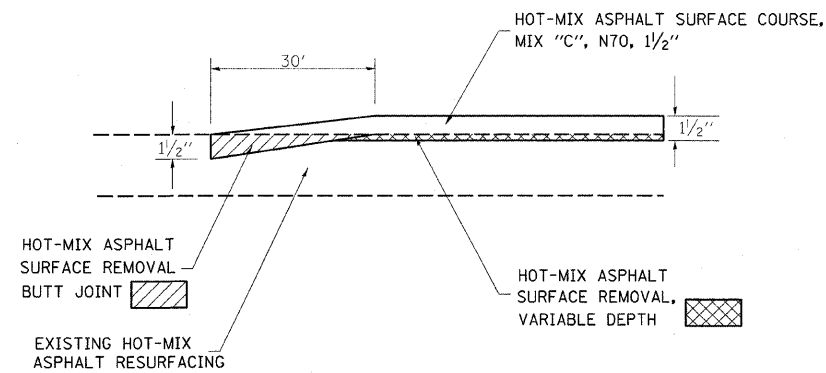
SIDE	STATION	TYPE	INCIDENTAL HOT-MIX ASPHALT SURFACING*		AGGREGATE SURFACE COURSE, TYPE B
			TON	TON	
LT	656+05	PRA	4.5		
RT	656+05	PRA	4.3		
LT	667+43	FE	2.2		
LT	669+70	PE	3.0		
RT	669+70	MBT	2.4		
RT	680+50	PE	3.7		
LT	695+75	FE	2.0		
RT	704+61	FE	1.9		
LT	704+61	FE	2.1		2.5
LT	721+07	MBT	3.8		3.3
RT	721+80	FE	2.7		
LT	724+10	FE	2.5		
RT	724+10	FE	2.8		
RT	726+48	FE	2.9		
LT	730+42	MBT	2.4		3.5
LT	738+10	PRA	6.1		
RT	738+10	PRA	6.0		
RT	741+30	FE	3.0		
RT	764+30	FE		4.6	
RT	765+07	PRA	3.0		
LT	765+15	FE	2.5		
RT	791+47	FE	2.4		
LT	791+47	FE	2.7		
LT	803+22	PE	4.0		
LT	804+78	PE	4.2		
RT	806+74	FE	2.8		
LT	810+47	FE	2.5		
		TOTALS		128	14

FE - FIELD ENTRANCE PRA - PUBLIC ROAD APPROACH  
PE - PRIVATE ENTRANCE MBT - MAILBOX TURNOUT  
CE - COMMERCIAL ENTRANCE

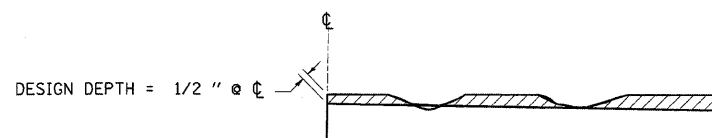
\*BITUMINOUS MATERIALS AND AGGREGATE (PRIME COAT) FOR ENTRANCES AND PUBLIC ROAD APPROACHES SHALL BE CONSIDERED INCIDENTAL TO INCIDENTAL HOT-MIX ASPHALT SURFACING.



**MILLING TRANSITION DETAIL**  
STA 885+39 TO STA 885+69



**BUTT JOINT DETAIL**  
STA 655+75 TO STA 656+05  
STA 846+51 TO STA 846+81  
STA 847+85 TO STA 848+15



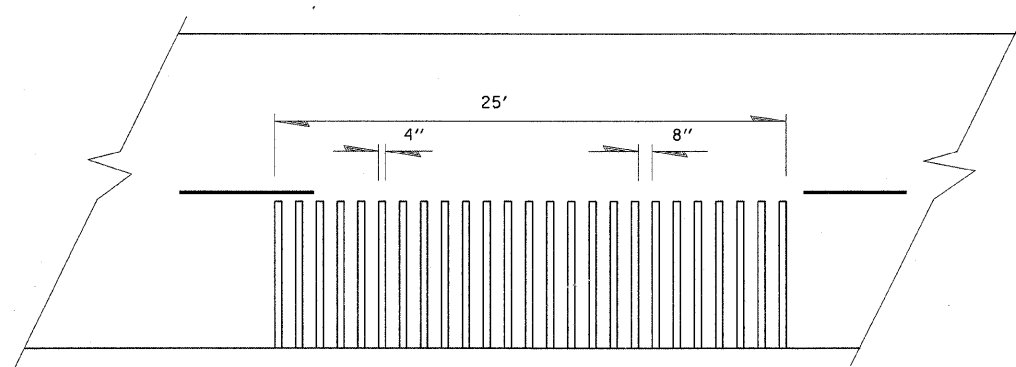
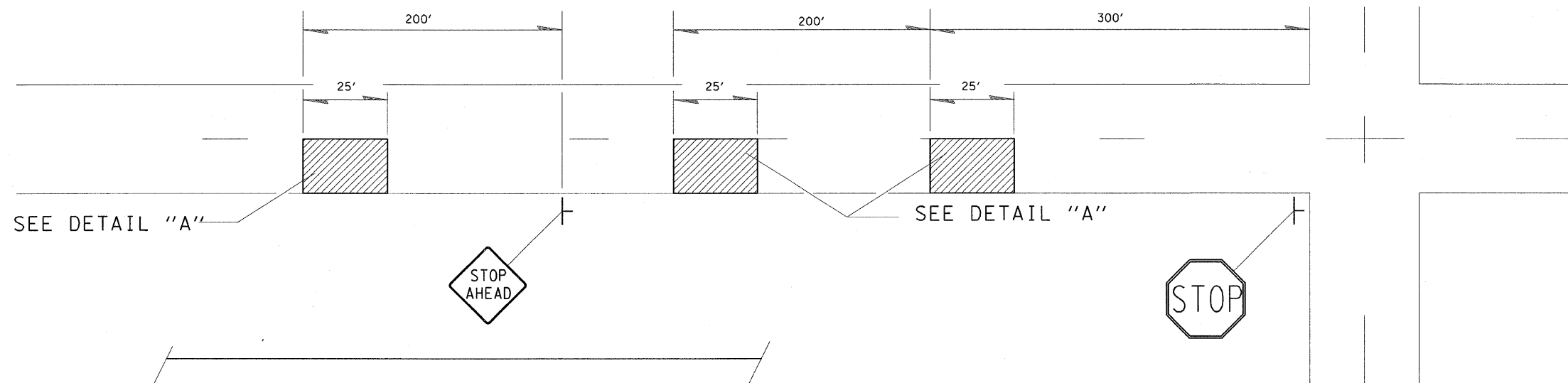
**NOTES:**

1. MILLING SHALL BE DONE TO ATTAIN A 3/16" SLOPE IN CROWN SECTIONS
2. EXISTING S.E. AND S.E. TRANSITIONS SHALL BE MAINTAINED UNLESS OTHERWISE SHOWN ON THE PLANS.
3. MILLING TO THE BOTTOM OF WHEEL RUTS SHALL NOT BE NECESSARY UNLESS REQUIRED TO OBTAIN SLOPE OR THE DESIGN DEPTH AT CENTERLINE.
4. THE AVERAGE DEPTH OF MILLING IS ESTIMATED TO BE 1/2" BUT MAY VARY IN ISOLATED LOCATIONS.

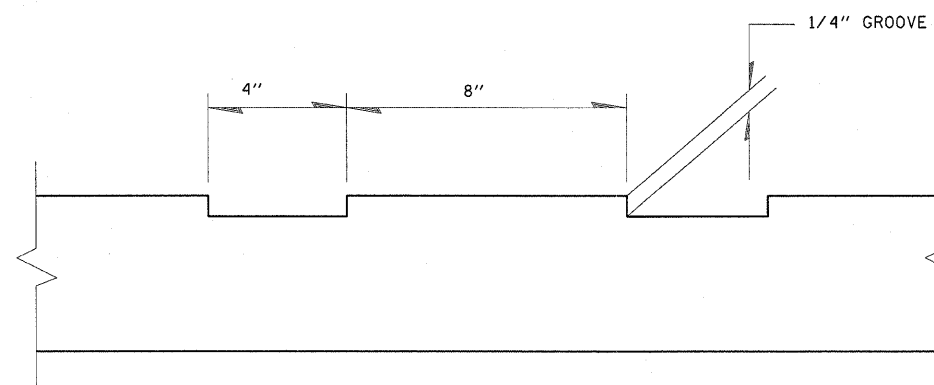
**HOT-MIX ASPHALT SURFACE REMOVAL (VARIABLE DEPTH) DETAIL**

FILE NAME =	USER NAME = swartzw	DESIGNED -	REVISED - MMD 12-99	<b>STATE OF ILLINOIS DEPARTMENT OF TRANSPORTATION</b>	<b>MILLING DETAILS</b>		F.A.P. RTE.	SECTION	COUNTY	TOTAL SHEETS	SHEET NO.
c:\pwwork\pwwork\swartzw\d0147717\077418-sht-details.dgn	DRAWN -	REVISED -	832				4RS-1, 114RS-2	COLES	22	20	
PLOT SCALE = 100.0000' / IN.	CHECKED -	REVISED -	CONTRACT NO. 74418								
PLOT DATE = 11/24/2009	DATE -	REVISED -	SCALE: NA		SHEET NO. 1 OF 1 SHEETS	STA.	TO STA.	ILLINOIS FED. AID PROJECT			

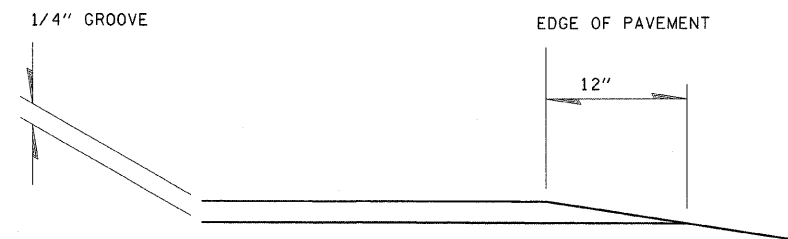
# TYPICAL RUMBLE STRIP APPLICATION IN ADVANCE OF AN INTERSECTION



DETAIL "A"

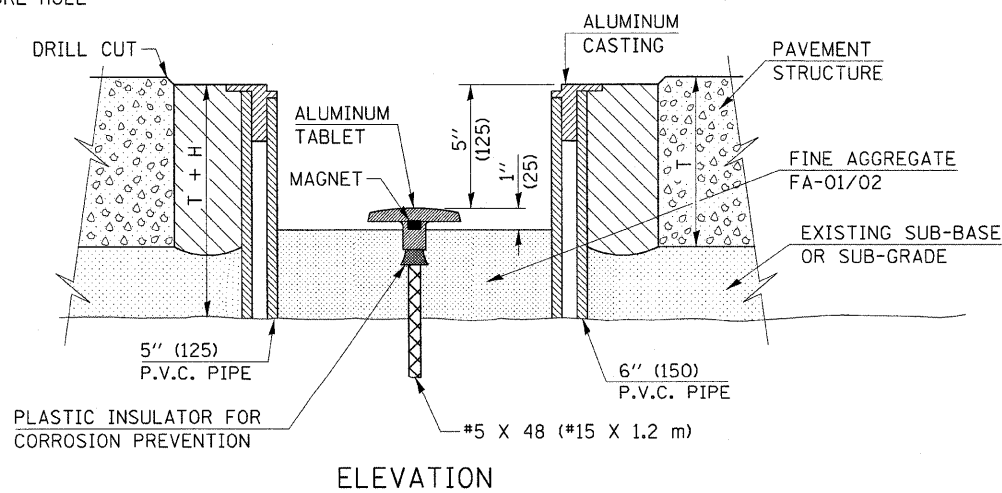
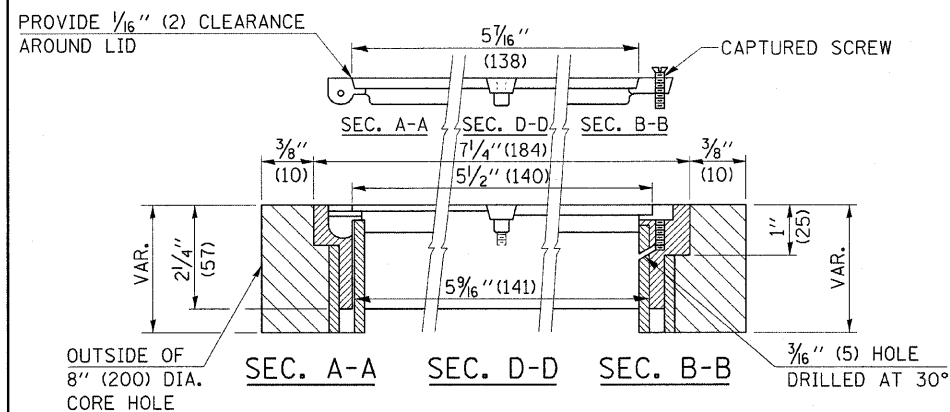
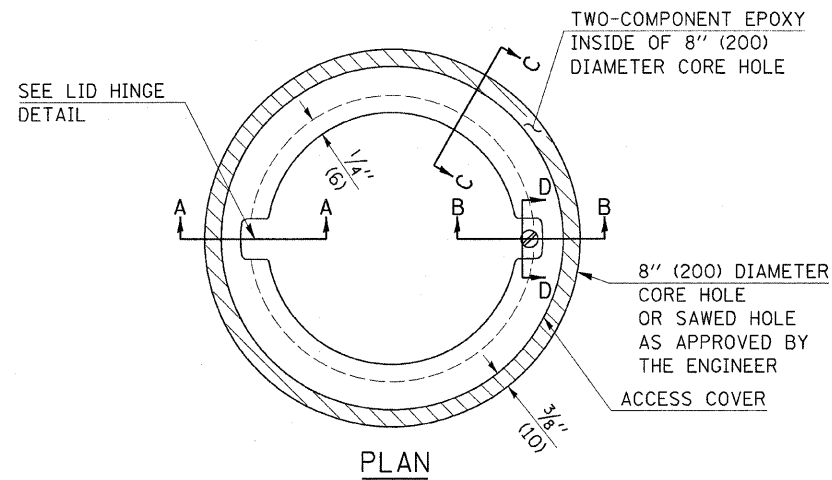


NOTE: THE 25 FEET RUMBLE AREA HAS 4" WIDE GROOVES SAWED INTO THE PAVEMENT, SEPARATED BY 8" OF EXISTING PAVEMENT. THE SAW CUTS SHALL EXTEND 12" INTO THE SHOULDER TO ALLOW FOR DRAINAGE.



FILE NAME =	USER NAME = swartzw	DESIGNED -	REVISED - MMO 12-99	<b>STATE OF ILLINOIS DEPARTMENT OF TRANSPORTATION</b>	<b>TYPICAL RUMBLE STRIP APPLICATION</b>			F.A.P. RTE.	SECTION	COUNTY	TOTAL SHEETS	SHEET NO.	
c:\pw_work\pwidot\swartzw\d147717\0774	118-sht-details.dgn	DRAWN -	REVISED -		SCALE: NA	SHEET NO. 1 OF 1 SHEETS	STA.	TO STA.	832	4RS-1, 114RS-2	COLES	22	21
	PLOT SCALE = 100.0000' / IN.	CHECKED -	REVISED -					CONTRACT NO. 74418		ILLINOIS FED. AID PROJECT			
	PLOT DATE = 11/24/2009	DATE -	REVISED -										

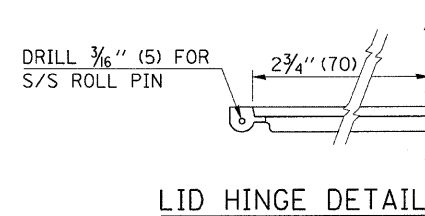
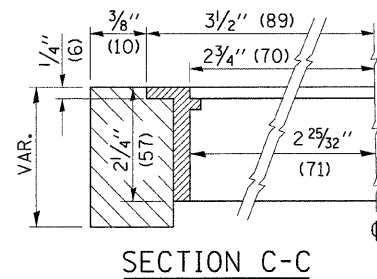
TO BE INSTALLED IN RIGID OR COMPOSITE PAVEMENT FOR PRESERVING LAND SURVEY MONUMENTS (SECTION OR SUBSECTION CORNERS)



**LEGEND**

- ALUMINUM CASTING
- 5" (125) OR 6" (150) P.V.C. PIPE
- TWO-COMPONENT EPOXY

T = THICKNESS OF PAVEMENT STRUCTURE  
H = THE THICKNESS OF THE SUB-BASE GRANULAR + 1" (25)



SPECIFICATIONS FOR ACCESS COVER FOR USE WITH SURVEY MARKER VAULT(S) AND SURVEY MARKER COVER ASSEMBLY(S): THE ACCESS COVER WILL BE CAST FROM A SPECIAL ALUMINUM ALLOY THAT IS COMPARABLE TO BRONZE IN HARDNESS. THE ACCESS COVER SHALL BE SPECIALLY ENGINEERED AND DESIGNED TO PROVIDE A SNUG FIT, INCORPORATING EQUIDISTANT LOCKING RIDGES, INSIDE A STANDARD 6" (150 mm) DIAMETER, OR OUTSIDE A STANDARD 5" (125 mm) DIAMETER, SCHEDULE 40 PVC PIPE. THE ACCESS COVER SHALL HAVE SPECIAL UNIFORM 1" (25 mm) THICK TOP SURFACE TO PERMIT INFORMATION TO BE EASILY MACHINE-STAMPED INTO IT. THE ACCESS COVER SHALL INCLUDE A STAINLESS CAPTURED SCREW AND AN OPPOSING RECESSED HINGE ASSEMBLY AS ITS LOCKING MECHANISM. THE ACCESS COVER SHALL INCORPORATE A SPECIAL ACCESS HOLE FOR CLEANING AND DRAINAGE, DRILLED AT 30° INSIDE THE RING OF THE ACCESS COVER, TO THE DRILLED AND TAPPED HOLE PROVIDED FOR THE STAINLESS CAPTURED SCREW. COMPOSITION: ALUMINUM 92-93%; MAGNESIUM 6.5-7.5%. STRENGTH: YIELD - 19,000-21,000 PSI (131-145 MPa); TENSILE - 38,000-44,000 PSI (262-303 MPa); ELONGATION - 10-15% IN 2" (50 mm). SPECIFICATIONS: ALLOY 535.0; 00-A-601Es. NO EXCEPTIONS.

RE-BAR-SURVEY MARKER, TYPE I, (SPECIAL) TO BE FURNISHED BY THE CONTRACTOR AND SET BY AN ILLINOIS PROFESSIONAL LAND SURVEYOR (SEE SPECIAL DETAIL SHEET FOR ALUMINUM TABLET AND RE-BAR SPECIFICATIONS).

**BILL OF MATERIAL**

ALUMINUM CASTING OF THE DIMENSIONS AND SPECIFICATIONS SHOWN OR OTHER SUBJECT TO ENGINEER'S APPROVAL OF SHOP DRAWINGS, 5" OR 6" (125 mm OR 150 mm) DIAMETER P.V.C. PIPE, SCHEDULE 40, ALUMINUM TABLET, STAMPED IN ACCORDANCE WITH STANDARD 667101. 5/8" X 48" (\*15 X 1.2 m) RE-BAR, EPOXY AND FA-01/02 AGGREGATE.

**GENERAL NOTES**

1. ALUMINUM CASTING SHALL BE EITHER PLACED OVER A 5" (125 mm) P.V.C. PIPE OR INSIDE OF A 6" (150 mm) P.V.C. PIPE.
2. BACKFILL WITH FINE AGGREGATE - FA-01/02.
3. WORK SHALL NOT START ON THIS ITEM UNTIL THE FINAL LIFT OF SURFACE HAS BEEN COMPLETED.
4. THIS WORK WILL BE PAID FOR AT THE CONTRACT UNIT PRICE EACH FOR SURVEY MARKER VAULT WHICH PRICE SHALL INCLUDE ALL LABOR AND MATERIAL AS SPECIFIED INCLUDING CORING, EPOXY AND FA-01/02 AGGREGATE AND NO ADDITIONAL COMPENSATION WILL BE ALLOWED.
5. THE CASTING SHALL BE ANCHORED IN THE 8" (200 mm) DIAMETER CORE HOLE WITH TWO-COMPONENT EPOXY CONFORMING TO APPLICABLE PORTIONS OF ARTICLE 1025.01 OF THE STANDARD SPECIFICATIONS.
6. ALL SURVEY MARKER (VAULTS) SHALL BE PLACED 1/4" (6 mm) ± BELOW THE FINAL SURFACE.
7. THE 8" (200 mm) DIAMETER CORE HOLE SHALL BE SUBJECT TO THE APPROVAL OF THE ENGINEER.

Note: All dimensions are in INCHES (millimeters) unless otherwise shown.

**DISTRICT 7 DETAIL NO. X0301232**

FILE NAME =	USER NAME = swartzw	DESIGNED -	REVISED -	<b>STATE OF ILLINOIS DEPARTMENT OF TRANSPORTATION</b>	<b>SURVEY MARKER VAULT</b>		F.A.P. RTE.	SECTION	COUNTY	TOTAL SHEETS	SHEET NO.
c:\pwork\pwork\swartzw\0147717\077418-shit-detail.dgn		DRAWN -	REVISED -				832	4RS-1, 114RS-2	COLES	22	22
PLOT SCALE = 100.0000' / IN.		CHECKED -	REVISED -				CONTRACT NO. 74418				
PLOT DATE = 11/24/2009		DATE -	REVISED -				ILLINOIS FED. AID PROJECT				
				SCALE: NA	SHEET NO. 1 OF 1 SHEETS	STA. TO STA.					