

STATE OF ILLINOIS
DEPARTMENT OF TRANSPORTATION
DIVISION OF HIGHWAYS

PROPOSED HIGHWAY PLANS

F.A.P. ROUTE 328 (U.S. RTE. 45)
SECTION (12R)RS-1

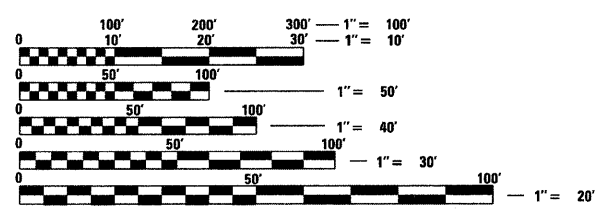
RESURFACING
EFFINGHAM COUNTY
C-97-028-10

F.A.P. RTE.	SECTION	COUNTY	TOTAL SHEETS	SHEET NO.
328	(12R)RS-1	EFFINGHAM	54	1
		ILLINOIS	CONTRACT NO. 74430	

FOR INDEX OF SHEETS, SEE SHEET NO. 2

STATION EQUATION:
82 + 65.95 (BK) = 93 + 00.00 (AH)

ADT 2009 = 12,000

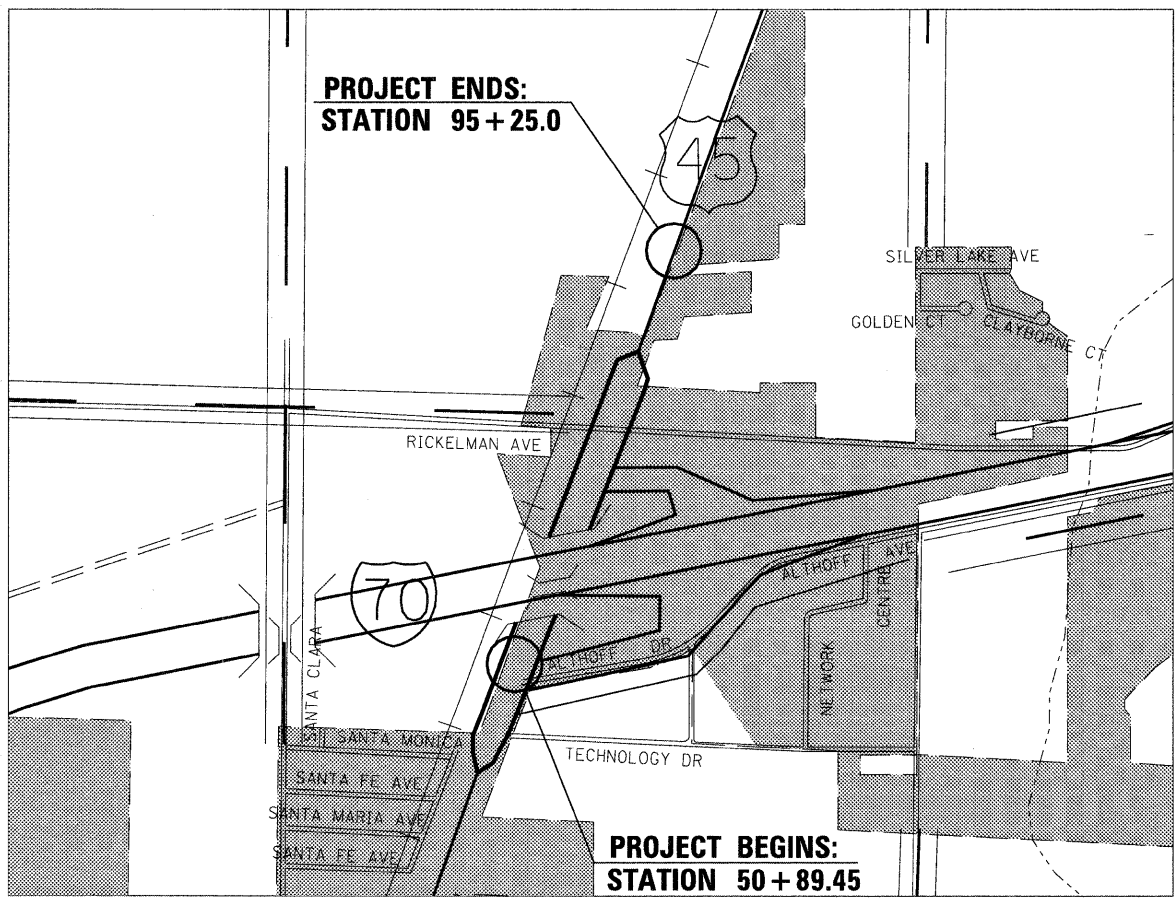


FULL SIZE PLANS HAVE BEEN PREPARED USING STANDARD ENGINEERING SCALES. REDUCED SIZED PLANS WILL NOT CONFORM TO STANDARD SCALES. IN MAKING MEASUREMENTS ON REDUCED PLANS, THE ABOVE SCALES MAY BE USED.

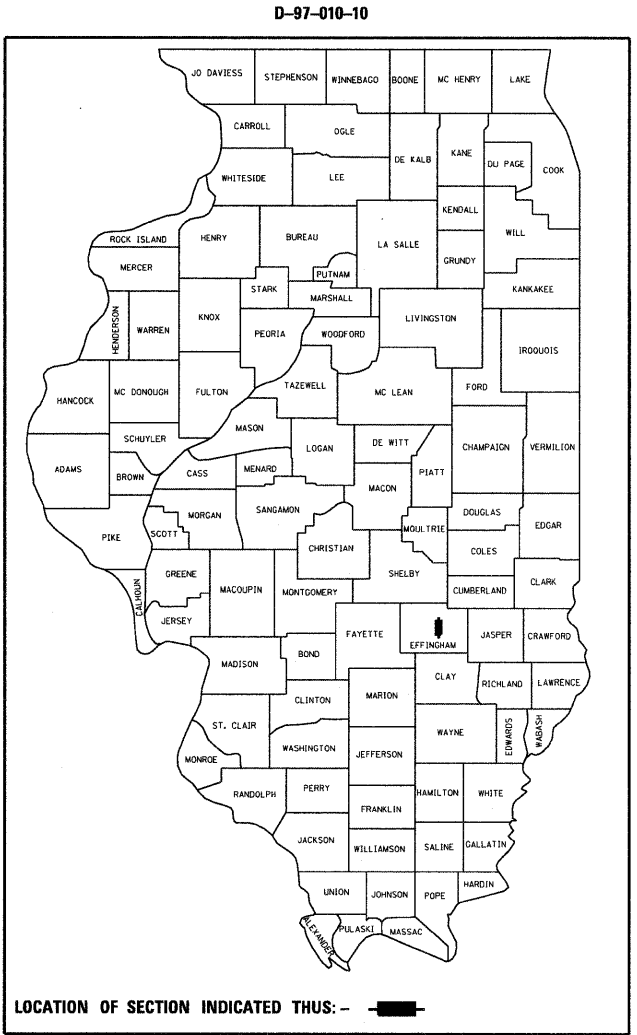
J.U.L.I.E.
JOINT UTILITY LOCATION INFORMATION FOR EXCAVATION
1-800-892-0123
OR 811

PROJECT ENGINEER: TOM RONAN
PROJECT MANAGER: JEFF DAVISON

CONTRACT NO. 74430



GROSS LENGTH = 3,401.5 FT. = 0.6 MILE
NET LENGTH = 3,401.5 FT. = 0.6 MILE



STATE OF ILLINOIS
DEPARTMENT OF TRANSPORTATION
DIVISION OF HIGHWAYS

SUBMITTED December 11 20 09

Roger L. Dinkell
DEPUTY DIRECTOR OF HIGHWAYS, REGION ENGINEER

January 09 20 10
Scott E. Smith PE, Inc.
ENGINEER OF DESIGN AND ENVIRONMENT

January 09 20 10
Christine M. Peckler
DIRECTOR OF HIGHWAYS, CHIEF ENGINEER

**PRINTED BY THE AUTHORITY
OF THE STATE OF ILLINOIS**