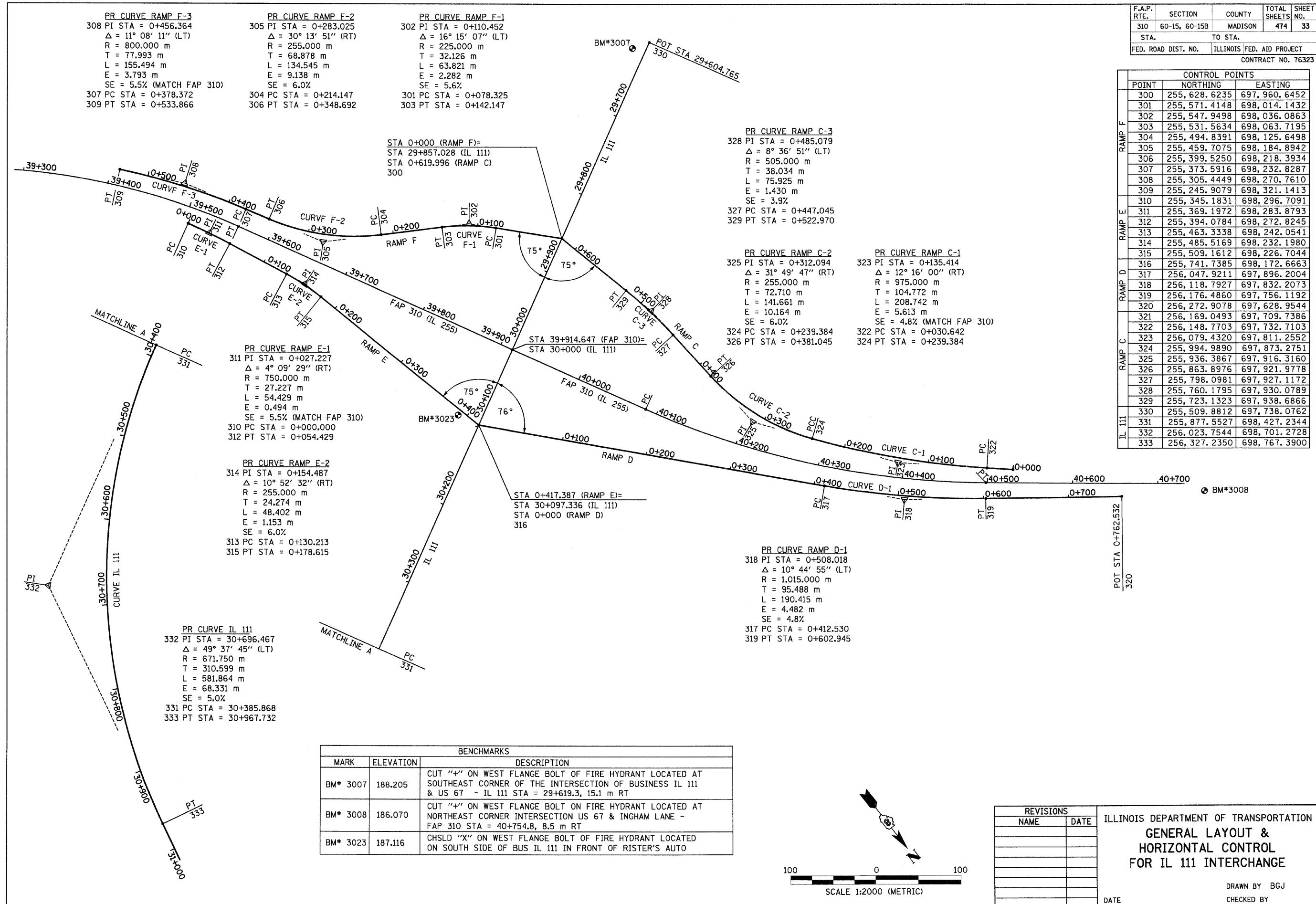


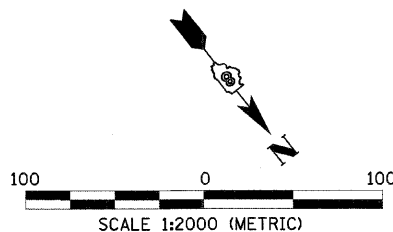
6/28/2007

p:\2007\files\00024\dmain\line\detail\ismisc\align\gmt_lbm2.dgn



CONTROL POINTS			
POINT	NORTHING	EASTING	
300	255,628.6235	697,960.6452	
301	255,571.4148	698,014.1432	
302	255,547.9498	698,036.0863	
303	255,531.5634	698,063.7195	
304	255,494.8391	698,125.6498	
305	255,459.7075	698,184.8942	
306	255,399.5250	698,218.3934	
307	255,373.5916	698,232.8287	
308	255,305.4449	698,270.7610	
309	255,245.9079	698,321.1413	
310	255,345.1831	698,296.7091	
311	255,369.1972	698,283.8793	
312	255,394.0784	698,272.8245	
313	255,463.3338	698,242.0541	
314	255,485.5169	698,232.1980	
315	255,509.1612	698,226.7044	
316	255,741.7385	698,172.6663	
317	256,047.9211	697,896.2004	
318	256,118.7927	697,832.2073	
319	256,176.4860	697,756.1192	
320	256,272.9078	697,628.9544	
321	256,169.0493	697,709.7386	
322	256,148.7703	697,732.7103	
323	256,079.4320	697,811.2552	
324	255,994.9890	697,873.2751	
325	255,936.3867	697,916.3160	
326	255,863.8976	697,921.9778	
327	255,798.0981	697,927.1172	
328	255,760.1795	697,930.0789	
329	255,723.1323	697,938.6866	
330	255,509.8812	697,738.0762	
331	255,877.5527	698,427.2344	
332	256,023.7544	698,701.2728	
333	256,327.2350	698,767.3900	

BENCHMARKS		
MARK	ELEVATION	DESCRIPTION
BM# 3007	188.205	CUT "+" ON WEST FLANGE BOLT OF FIRE HYDRANT LOCATED AT SOUTHEAST CORNER OF THE INTERSECTION OF BUSINESS IL 111 & US 67 - IL 111 STA = 29+619.3, 15.1 m RT
BM# 3008	186.070	CUT "+" ON WEST FLANGE BOLT ON FIRE HYDRANT LOCATED AT NORTHEAST CORNER INTERSECTION US 67 & INGHAM LANE - FAP 310 STA = 40+754.8, 8.5 m RT
BM# 3023	187.116	CHSLD "X" ON WEST FLANGE BOLT OF FIRE HYDRANT LOCATED ON SOUTH SIDE OF BUS IL 111 IN FRONT OF RISTER'S AUTO



REVISIONS	
NAME	DATE

ILLINOIS DEPARTMENT OF TRANSPORTATION
**GENERAL LAYOUT &
 HORIZONTAL CONTROL
 FOR IL 111 INTERCHANGE**

DATE _____ DRAWN BY B.G.J.
 CHECKED BY _____