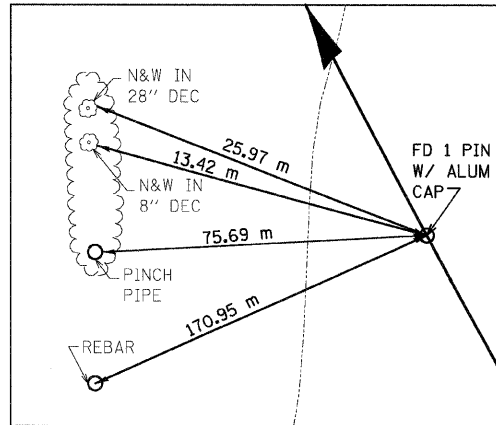
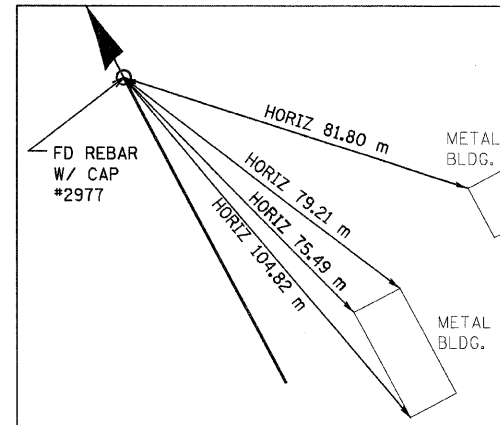


F.A.P. RTE.	SECTION	COUNTY	TOTAL SHEETS	SHEET NO.
310	60-15, 60-15B	MADISON	474	36
STA.	TO STA.			
FED. ROAD DIST. NO.	ILLINOIS FED. AID PROJECT			
CONTRACT NO. 76323				



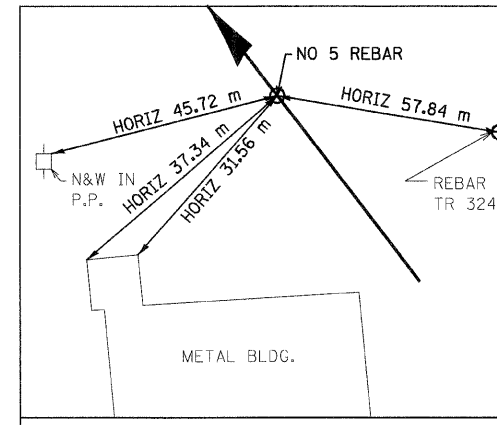
IL 255 MAINLINE PT
STA 39+561.606

N 255,384.0772 E 698,252.2896



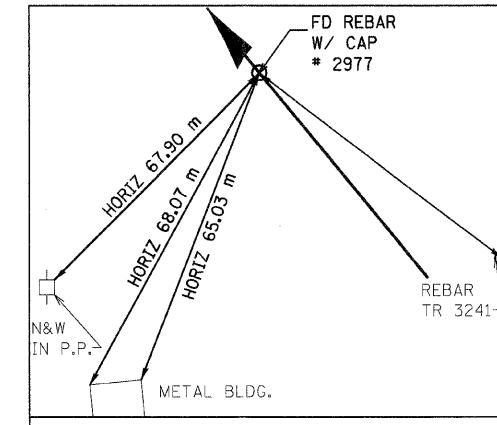
IL 255 MAINLINE PC
STA 40+086.205

N 255,847.4601 E 698,006.3632



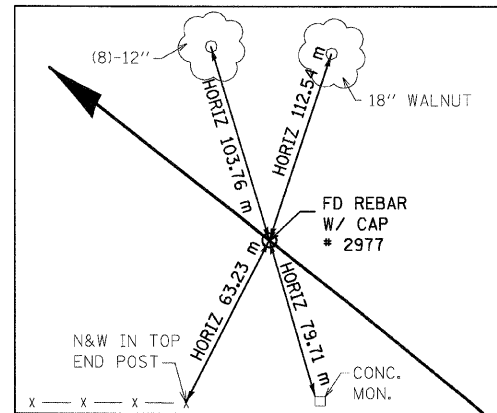
IL 255 MAINLINE POL
STA 40+260.000

N 255,993.0984 E 697,911.9303



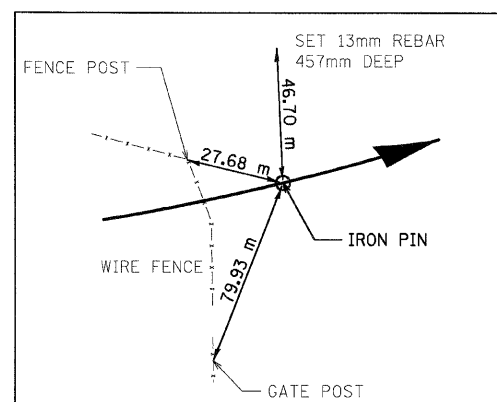
IL 255 MAINLINE PI
STA 40+295.227

N 256,032.0913 E 697,908.3758



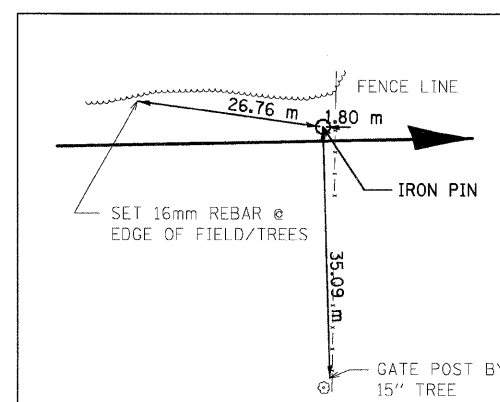
IL 255 MAINLINE PT
STA 40+498.257

N 256,161.6866 E 697,744.3781



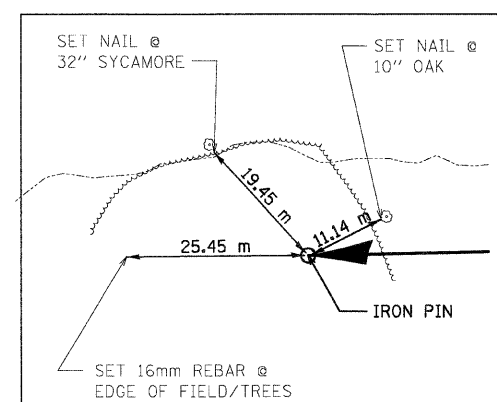
RAMP '3' PI STA 1+308.272

N 253,238.9613 E 701,949.4152



RAMP '3' POT STA 1+500.000

N 253,253.0994 E 701,756.2340



RAMP '3' POT STA 1+710.585

N 253,230.8904 E 701,545.6908

NOTES:

- 1) DIMENSIONS LABELED "HORIZ" ARE HORIZONTAL PULLS.
- 2) DIMENSIONS NOT LABELED "HORIZ" ARE DIRECT PULLS.



(TYP ALL TIES THIS DWG)

REVISIONS	
NAME	DATE

ILLINOIS DEPARTMENT OF TRANSPORTATION
HORIZONTAL CONTROL TIES
FAP 310 (IL 255)
SECTION 60-15
MADISON COUNTY
DRAWN BY CES
CHECKED BY
DATE