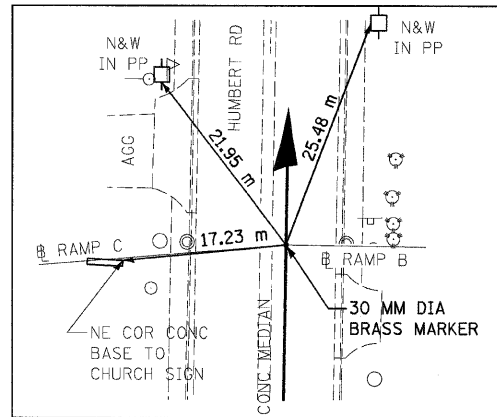
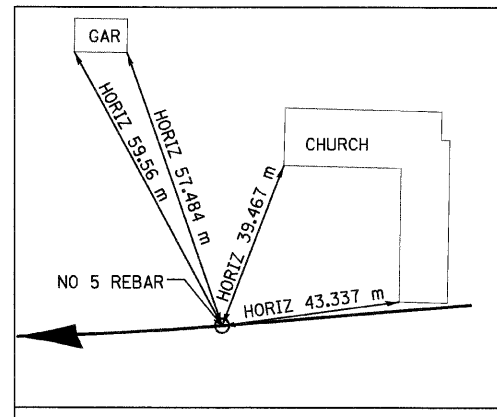


F.A.P. RTE.	SECTION	COUNTY	TOTAL SHEETS	SHEET NO.
310	60-15, 60-15B	MADISON	474	39
STA.		TO STA.		
FED. ROAD DIST. NO.		ILLINOIS FED. AID PROJECT		
CONTRACT NO. 76323				



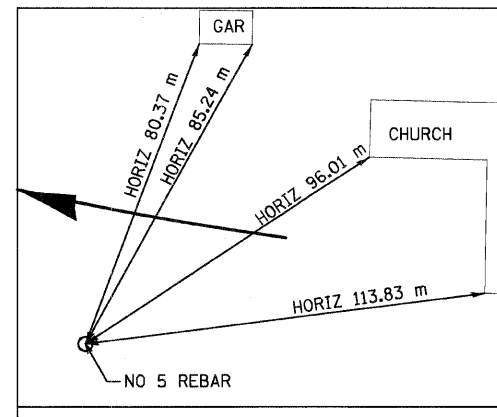
HUMBERT RAMP 'C'  
POT STA 0+000.000

N 255,082.7092 E 698,830.4566



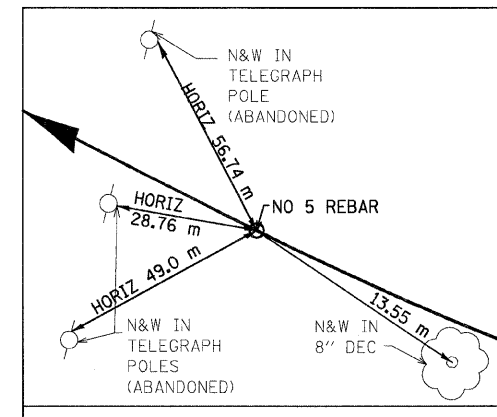
HUMBERT RAMP 'C'  
PC STA 0+134.033

N 255,071.6562 E 698,696.8803



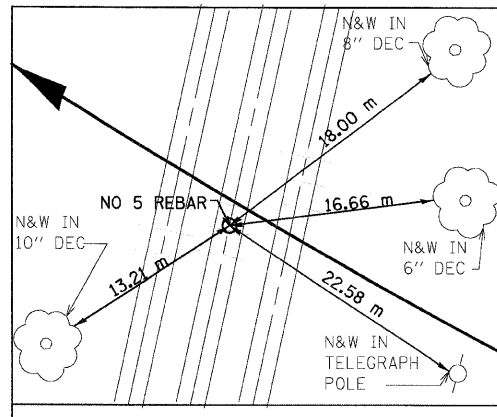
HUMBERT RAMP 'C'  
PI STA 0+204.522

N 255,065.8432 E 698,626.6310



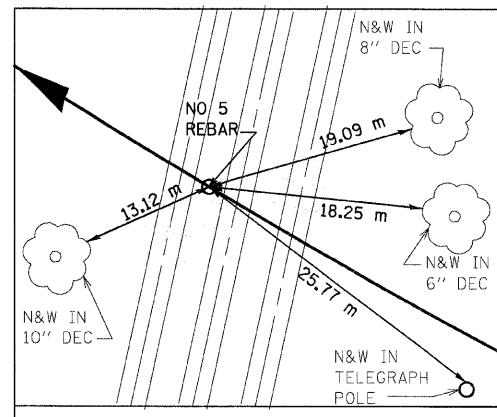
HUMBERT RAMP 'C'  
PCC STA 0+271.577

N 255,096.9365 E 698,563.3699



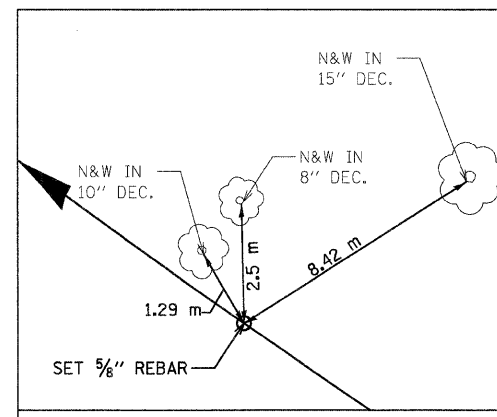
HUMBERT RAMP 'C'  
PI STA 0+312.778

N 255,115.1106 E 698,526.3936



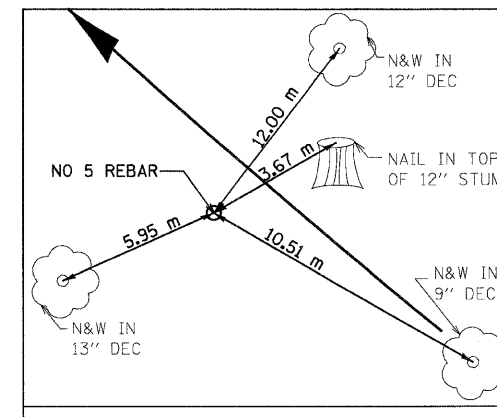
HUMBERT RAMP 'C'  
POT STA 0+315.500

N 255,117.9366 E 698,524.8069



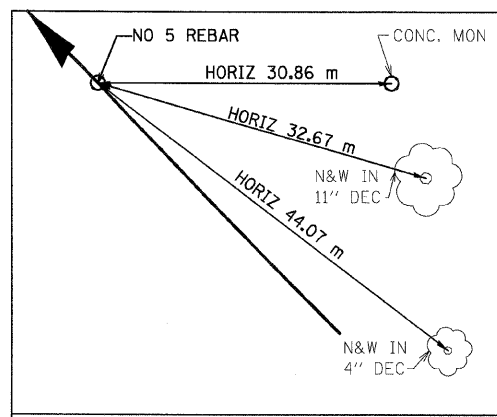
HUMBERT RAMP 'C'  
PCC STA 0+353.811

N 255,138.8303 E 698,492.7051



HUMBERT RAMP 'C'  
PI STA 0+431.510

N 255,183.5622 E 698,429.1737



HUMBERT RAMP 'C'  
PT STA 0+508.671

N 255,240.2246 E 698,376.0084

NOTES:

- 1) DIMENSIONS LABELED "HORIZ" ARE HORIZONTAL PULLS.
- 2) DIMENSIONS NOT LABELED "HORIZ" ARE DIRECT PULLS.



(TYP ALL TIES THIS DWG)

REVISIONS	
NAME	DATE

ILLINOIS DEPARTMENT OF TRANSPORTATION  
**HORIZONTAL CONTROL TIES**  
 FAP 310 (IL 255)  
 SECTION 60-15  
 MADISON COUNTY  
 DRAWN BY CES  
 CHECKED BY  
 DATE