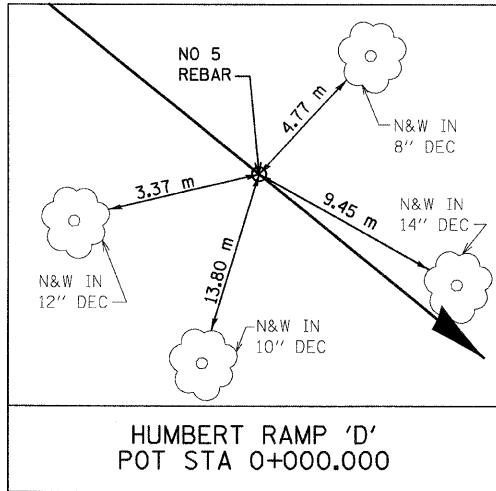
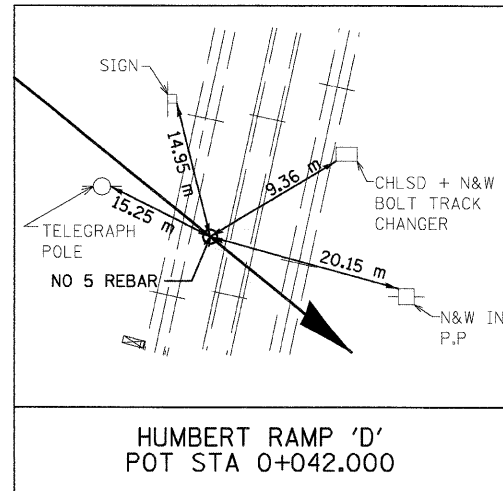


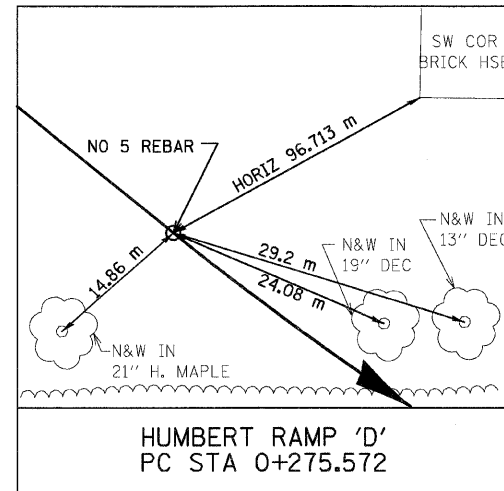
F.A.P. RTE.	SECTION	COUNTY	TOTAL SHEETS	SHEET NO.
310	60-15, 60-15B	MADISON	474	40
STA.		TO STA.		
FED. ROAD DIST. NO.		ILLINOIS FED. AID PROJECT		
CONTRACT NO. 76323				



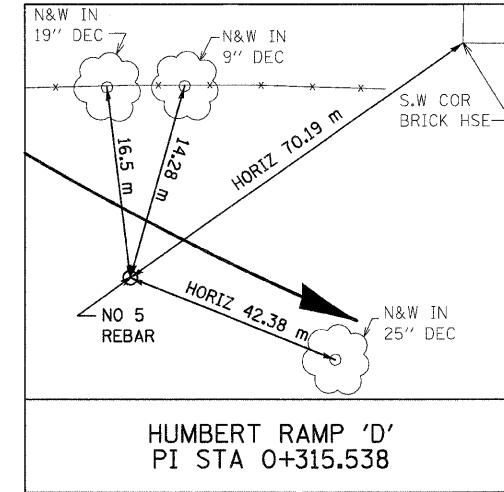
N 255,096.1499 E 698,481.6737



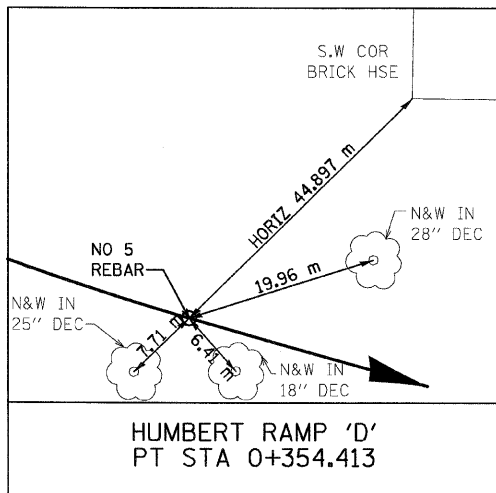
N 255,069.6531 E 698,514.2608



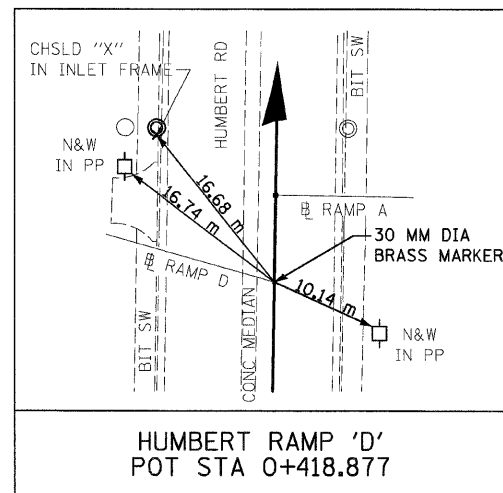
N 254,922.2983 E 698,695.4855



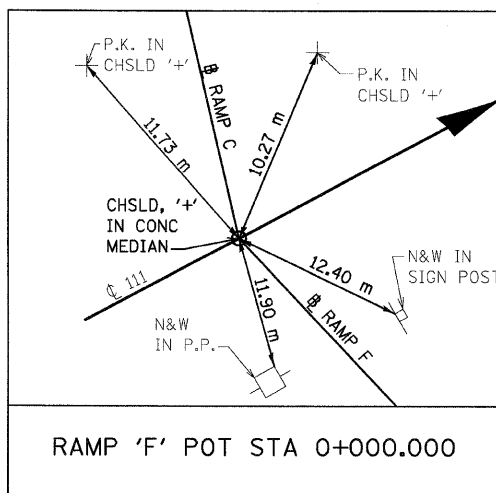
N 254,897.0846 E 698,726.4946



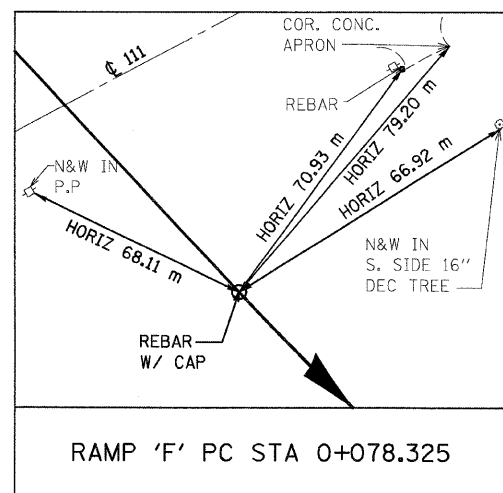
N 254,886.1023 E 698,764.9224



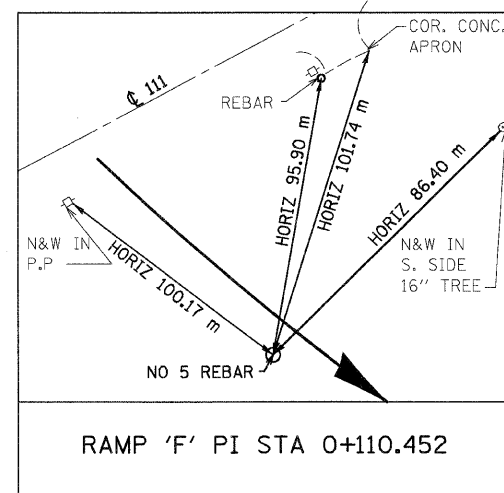
N 254,868.3883 E 698,826.9048



N 255,628.6235 E 697,960.6452



N 255,571.4148 E 698,014.1432



N 255,547.9498 E 698,036.0863

NOTES:

- 1) DIMENSIONS LABELED "HORIZ" ARE HORIZONTAL PULLS.
- 2) DIMENSIONS NOT LABELED "HORIZ" ARE DIRECT PULLS.



(TYP ALL TIES THIS DWG)

REVISIONS	
NAME	DATE

ILLINOIS DEPARTMENT OF TRANSPORTATION  
**HORIZONTAL CONTROL TIES**  
 FAP 310 (IL 255)  
 SECTION 60-15  
 MADISON COUNTY  
 DRAWN BY CES  
 CHECKED BY  
 DATE