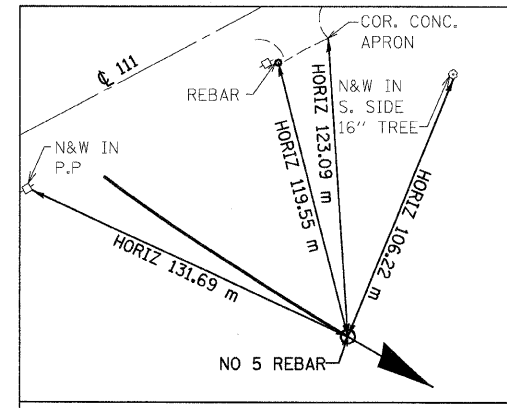
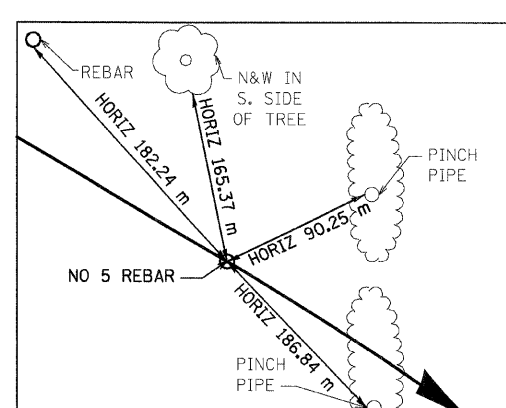


F.A.P. RTE.	SECTION	COUNTY	TOTAL SHEETS	SHEET NO.
310	60-15, 60-15B	MADISON	474	41
STA.		TO STA.		
FED. ROAD DIST. NO.		ILLINOIS FED. AID PROJECT		
CONTRACT NO. 76323				



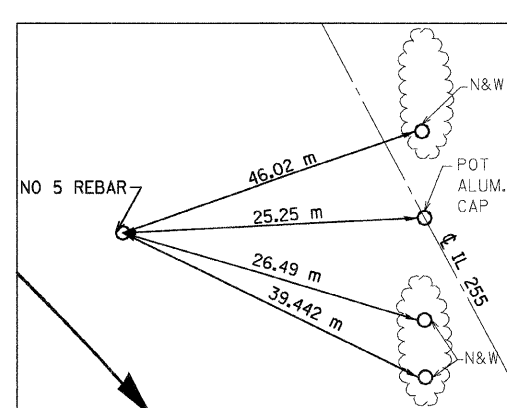
RAMP 'F' PT STA 0+142.147

N 255,531.5634 E 698,063.7195



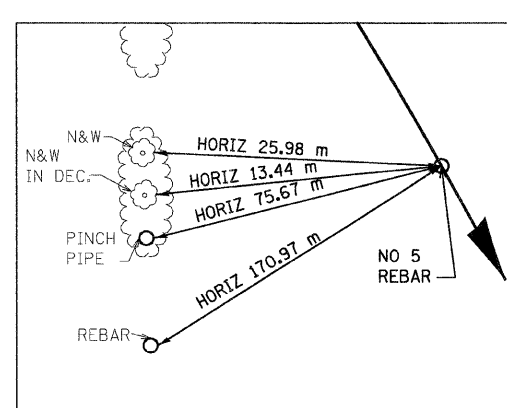
RAMP 'F' PC STA 0+214.147

N 255,494.8391 E 698,125.6498



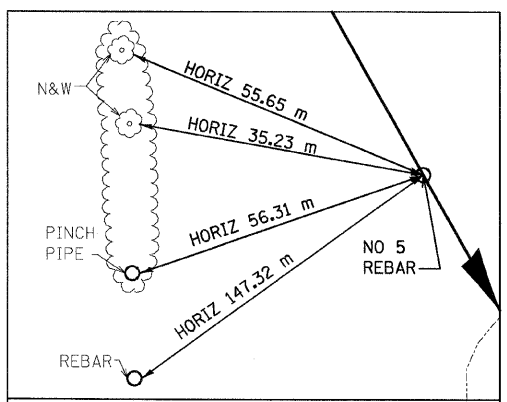
RAMP 'F' PI STA 0+283.025

N 255,459.7075 E 698,184.8942



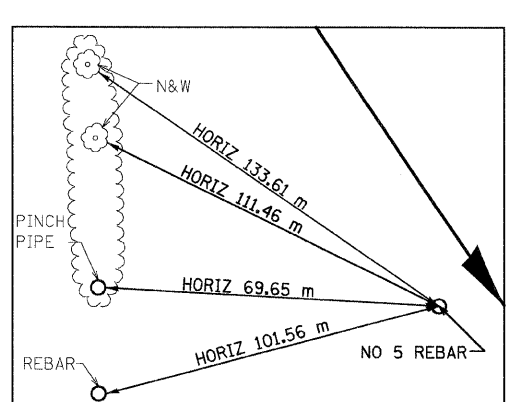
RAMP 'F' PT STA 0+348.692

N 255,399.5250 E 698,218.3934



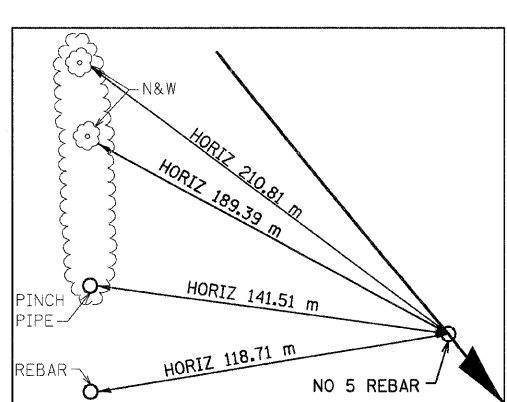
RAMP 'F' PC STA 0+378.372

N 255,373.5916 E 698,232.8287



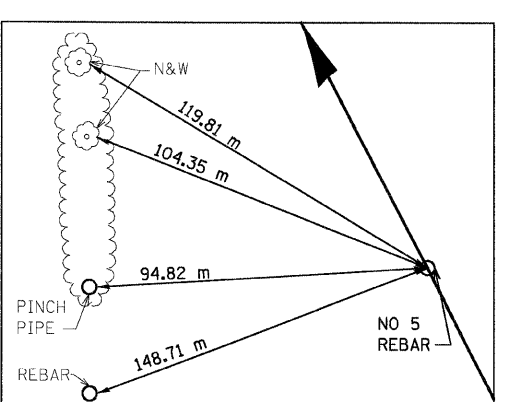
RAMP 'F' PI STA 0+456.364

N 255,305.4449 E 698,270.7610



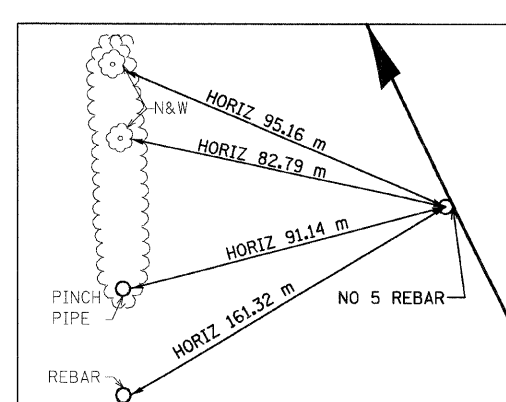
RAMP 'F' PT STA 0+533.866

N 255,245.9079 E 698,321.1413



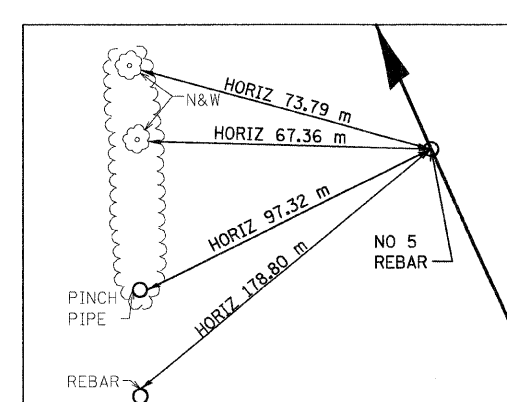
RAMP 'E' PC STA 0+000.000

N 255,345.1831 E 698,296.7091



RAMP 'E' PI STA 0+027.227

N 255,369.1972 E 698,283.8793



RAMP 'E' PT STA 0+054.429

N 255,394.0784 E 698,272.8245

NOTES:

- 1) DIMENSIONS LABELED "HORIZ" ARE HORIZONTAL PULLS.
- 2) DIMENSIONS NOT LABELED "HORIZ" ARE DIRECT PULLS.



(TYP ALL TIES THIS DWG)

REVISIONS	
NAME	DATE

ILLINOIS DEPARTMENT OF TRANSPORTATION  
**HORIZONTAL CONTROL TIES**  
 FAP 310 (IL 255)  
 SECTION 60-15  
 MADISON COUNTY  
 DRAWN BY CES  
 CHECKED BY  
 DATE