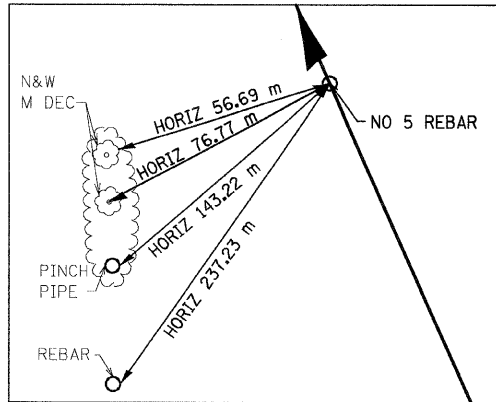
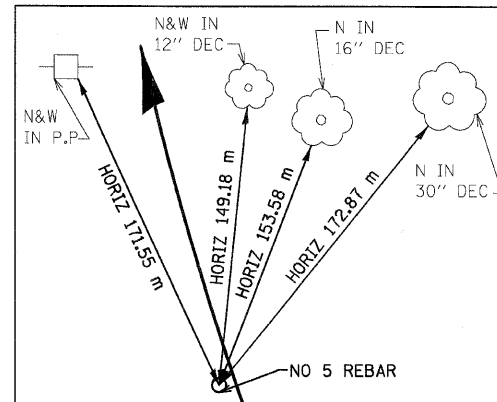


F.A.P. RTE.	SECTION	COUNTY	TOTAL SHEETS	SHEET NO.
310	60-15, 60-15B	MADISON	474	42
STA.		TO STA.		
FED. ROAD DIST. NO.		ILLINOIS FED. AID PROJECT		
CONTRACT NO. 76323				



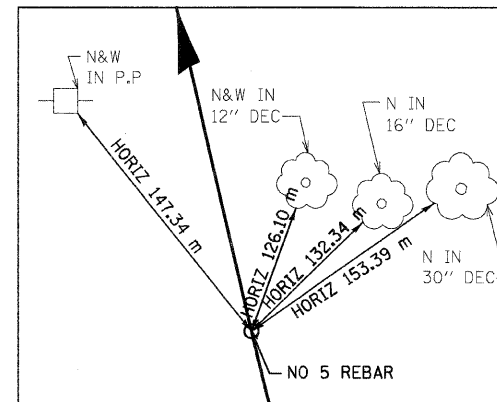
RAMP 'E' PC STA 0+130.213

N 255,463.3338 E 698,242.0541



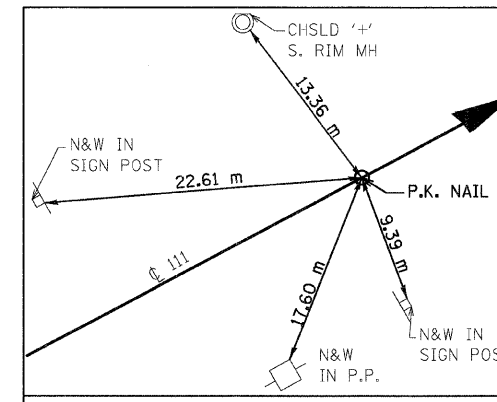
RAMP 'E' PI STA 0+154.487

N 255,485.5169 E 698,232.1980



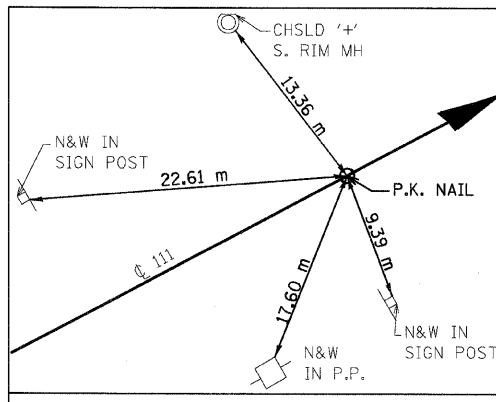
RAMP 'E' PT STA 0+178.615

N 255,509.1612 E 698,226.7044



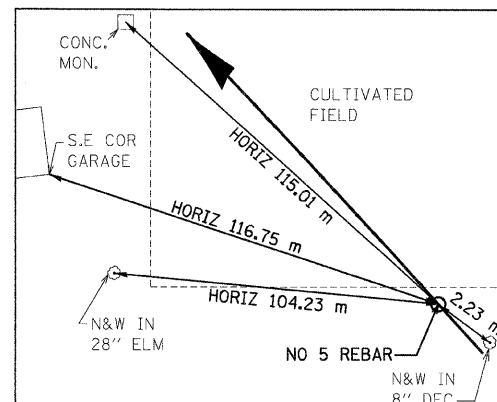
RAMP 'E' POT STA 0+417.387

N 255,741.7385 E 698,172.6663



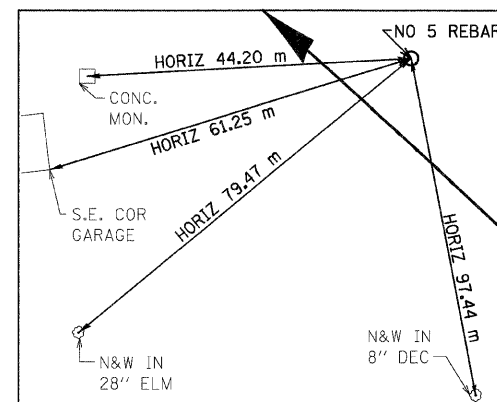
IL 111 RAMP 'D' POT STA 0+000.000

N 255,741.7385 E 698,172.6663



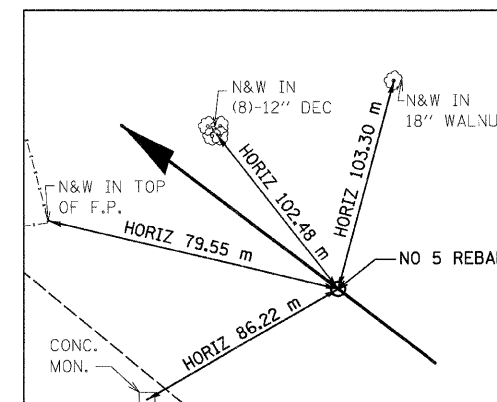
IL 111 RAMP 'D' PC STA 0+412.530

N 256,047.9211 E 697,896.2004



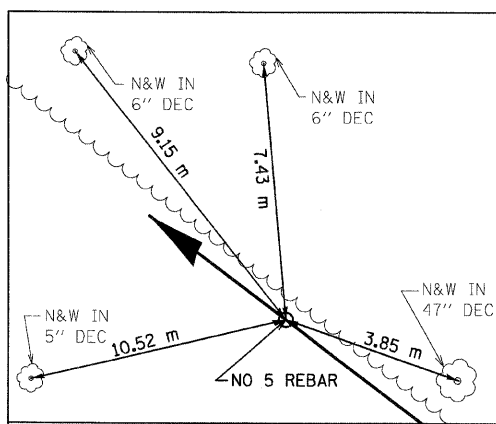
IL 111 RAMP 'D' PI STA 0+508.018

N 256,118.7927 E 697,832.2073



IL 111 RAMP 'D' PT STA 0+602.945

N 256,176.4860 E 697,756.1192



IL 111 RAMP 'D' POT STA 0+762.532

N 256,272.9078 E 697,628.9544

NOTES:

- 1) DIMENSIONS LABELED "HORIZ" ARE HORIZONTAL PULLS.
- 2) DIMENSIONS NOT LABELED "HORIZ" ARE DIRECT PULLS.



(TYP ALL TIES THIS DWG)

REVISIONS	
NAME	DATE

ILLINOIS DEPARTMENT OF TRANSPORTATION  
 HORIZONTAL CONTROL TIES  
 FAP 310 (IL 255)  
 SECTION 60-15  
 MADISON COUNTY  
 DRAWN BY CES  
 CHECKED BY  
 DATE