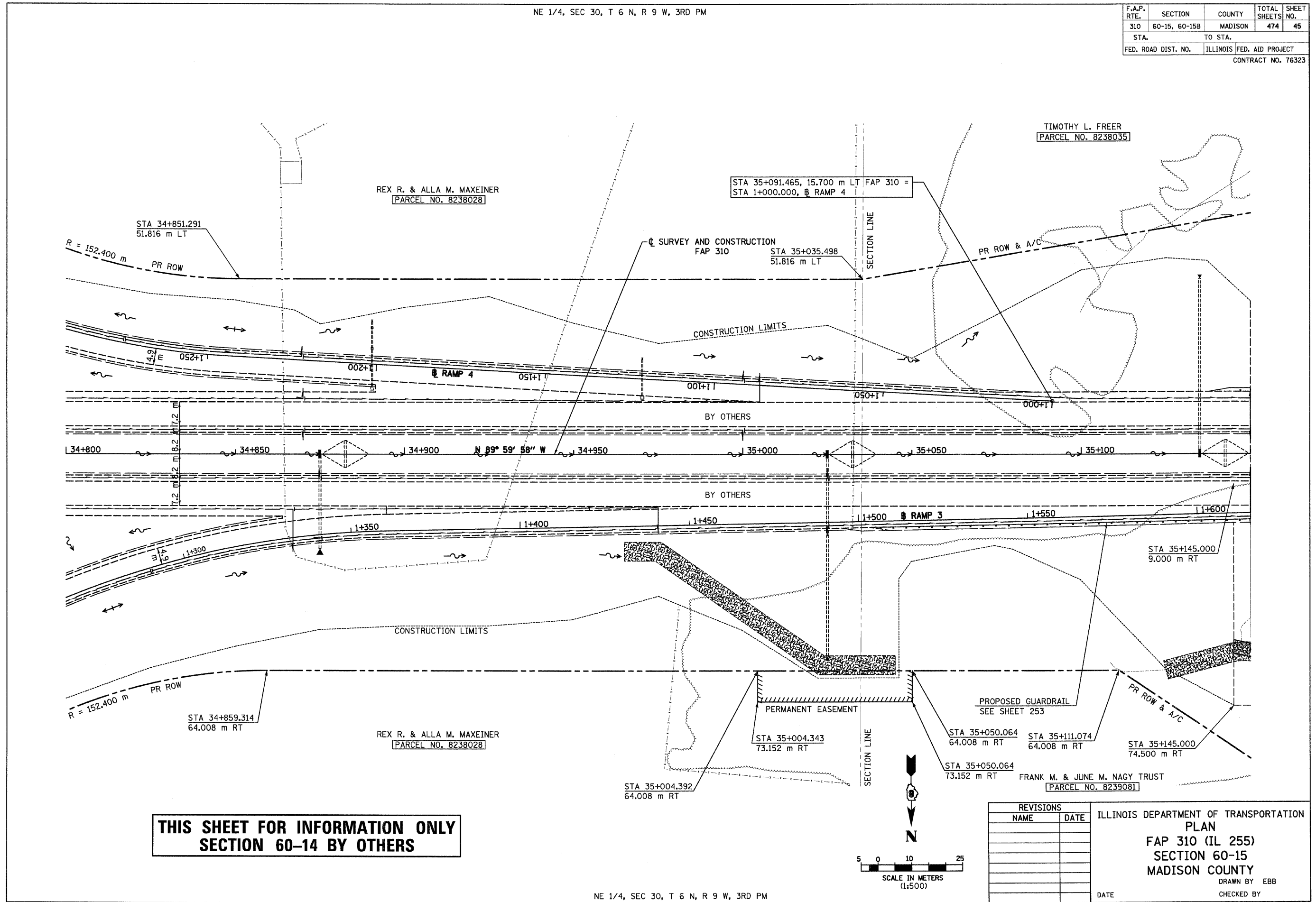


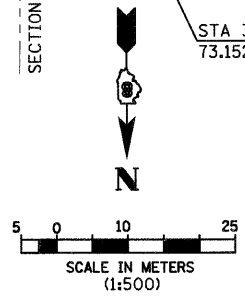
6/28/2007

NE 1/4, SEC 30, T 6 N, R 9 W, 3RD PM

F.A.P. RTE.	SECTION	COUNTY	TOTAL SHEETS	SHEET NO.
310	60-15, 60-15B	MADISON	474	45
STA.		TO STA.		
FED. ROAD DIST. NO.		ILLINOIS FED. AID PROJECT		
CONTRACT NO. 76323				



**THIS SHEET FOR INFORMATION ONLY
SECTION 60-14 BY OTHERS**



REVISIONS	
NAME	DATE

ILLINOIS DEPARTMENT OF TRANSPORTATION
 PLAN
 FAP 310 (IL 255)
 SECTION 60-15
 MADISON COUNTY
 DRAWN BY EBB
 CHECKED BY
 DATE

NE 1/4, SEC 30, T 6 N, R 9 W, 3RD PM

IL 255 (FAP 310), STA 34+800 TO STA 35+150

p:\00\files\00024\adm\in\me\plan\pr-of\files\plan\015\001.dgn