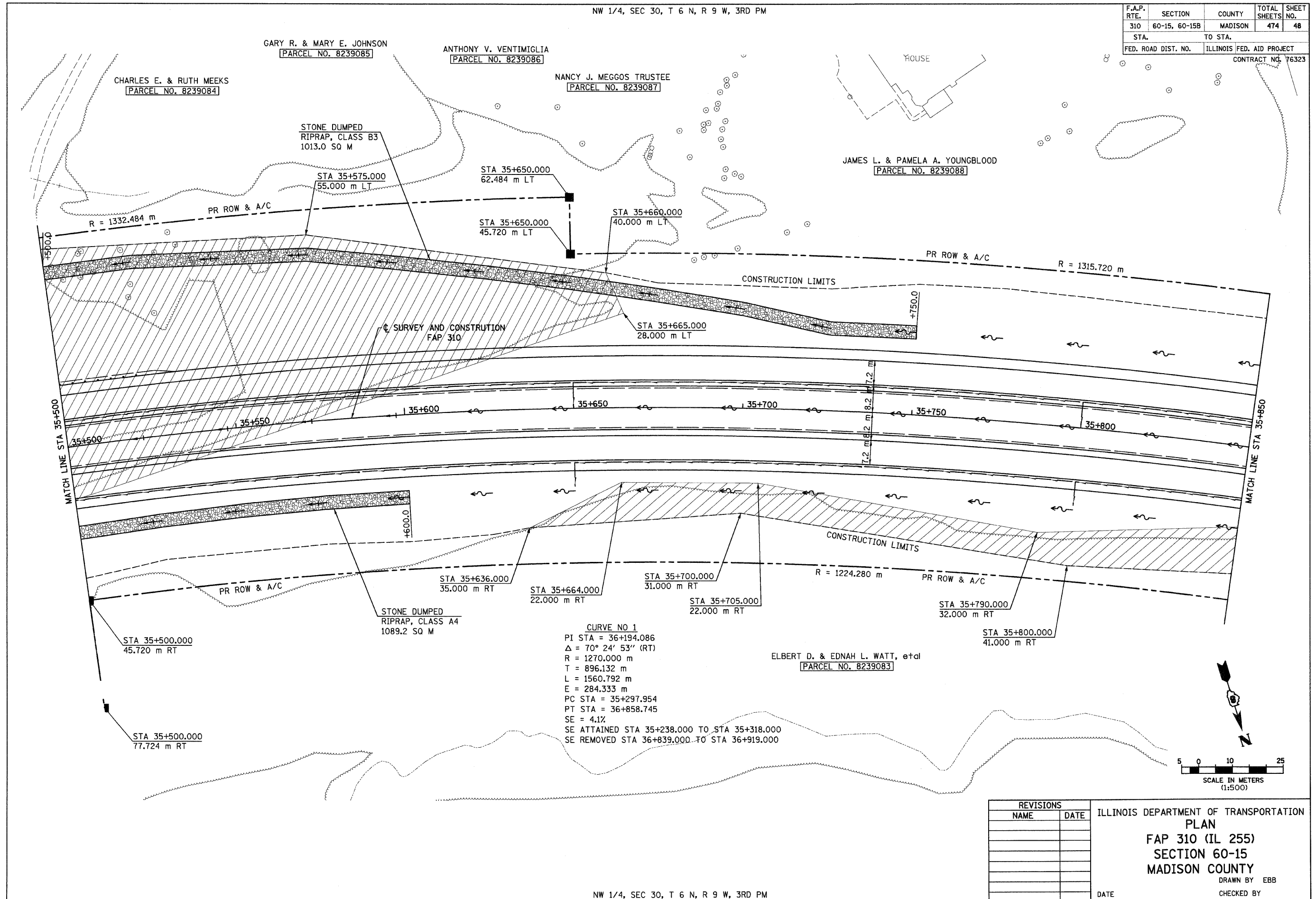


6/28/2007

p:\00files\00024\mainline\planprofiles\plan015a02.dgn

NW 1/4, SEC 30, T 6 N, R 9 W, 3RD PM

F.A.P. RTE.	SECTION	COUNTY	TOTAL SHEETS	SHEET NO.
310	60-15, 60-15B	MADISON	474	48
STA.	TO STA.			
FED. ROAD DIST. NO.	ILLINOIS FED. AID PROJECT			
CONTRACT NO. 76323				



NW 1/4, SEC 30, T 6 N, R 9 W, 3RD PM

REVISIONS		ILLINOIS DEPARTMENT OF TRANSPORTATION PLAN FAP 310 (IL 255) SECTION 60-15 MADISON COUNTY
NAME	DATE	
		DRAWN BY EBB CHECKED BY DATE

IL 255 (FAP 310), STA 35+500 TO STA 35+850