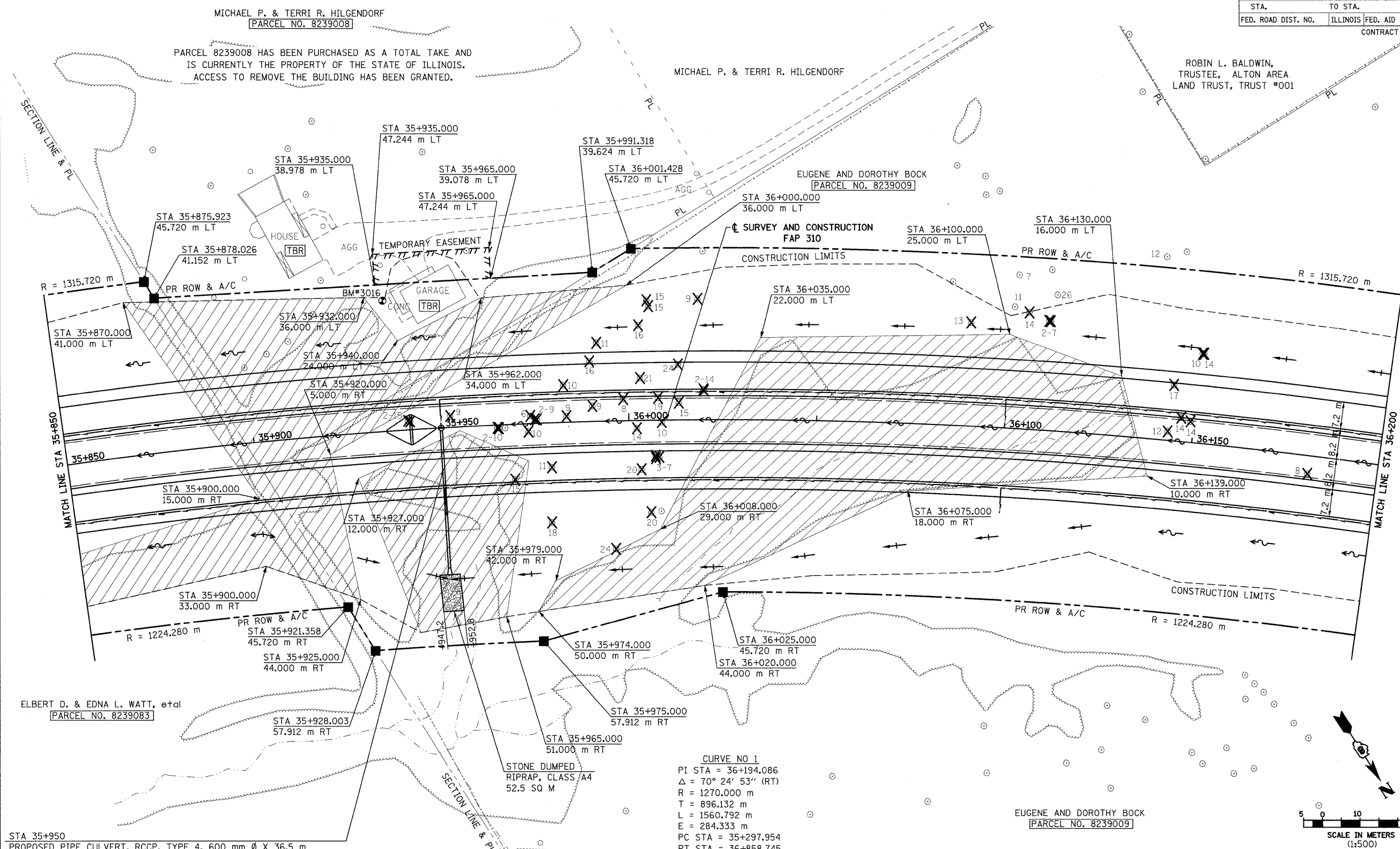


11/30/2009

NE 1/4, SEC 25, T 6 N, R 10 W, 3RD PM

F.A.P. RTE.	SECTION	COUNTY	TOTAL SHEETS	SHEET NO.
310	60-15, 60-15B	MADISON	474	50
STA.	TO STA.			
FED. ROAD DIST. NO.		ILLINOIS	FED. AID PROJECT	
			CONTRACT NO. 76323	



STA 35+950  
 PROPOSED PIPE CULVERT, RCCP, TYPE 4, 600 mm Ø X 36.5 m  
 USFL 162.625, 0.6 m RT  
 DSFL 162.260, 37.1 m RT  
 PROPOSED MANHOLE, TYPE A, 1.200 m Ø, STD 602401  
 WITH MEDIAN INLET STD 604101 (SEE DETAIL ON SHEET 265)  
 GRATE = 167.495  
 PRECAST REINFORCED CONCRETE FLAT SLAB TOP, STD 602601  
 PRECAST REINFORCED CONCRETE FLARED END SECTION STD 542301, 1-EACH

BM 3016-40d NAIL IN LIGHT POLE LOCATED NORTH OF HILGENDORF HOUSE AND EAST OF METAL GARAGE. MAINLINE STA 35+936.7, 34.8 m LT ELEV 171.485

REVISIONS	
NAME	DATE

ILLINOIS DEPARTMENT OF TRANSPORTATION  
 PLAN  
 FAP 310 (IL 255)  
 SECTION 60-15  
 MADISON COUNTY  
 DRAWN BY EBB  
 CHECKED BY  
 DATE

NW 1/4, SEC 30, T 6 N, R 9 W, 3RD PM

NE 1/4, SEC 25, T 6 N, R 10 W, 3RD PM

IL 255 (FAP 310), STA 35+850 TO STA 36+200

\$FILE\$